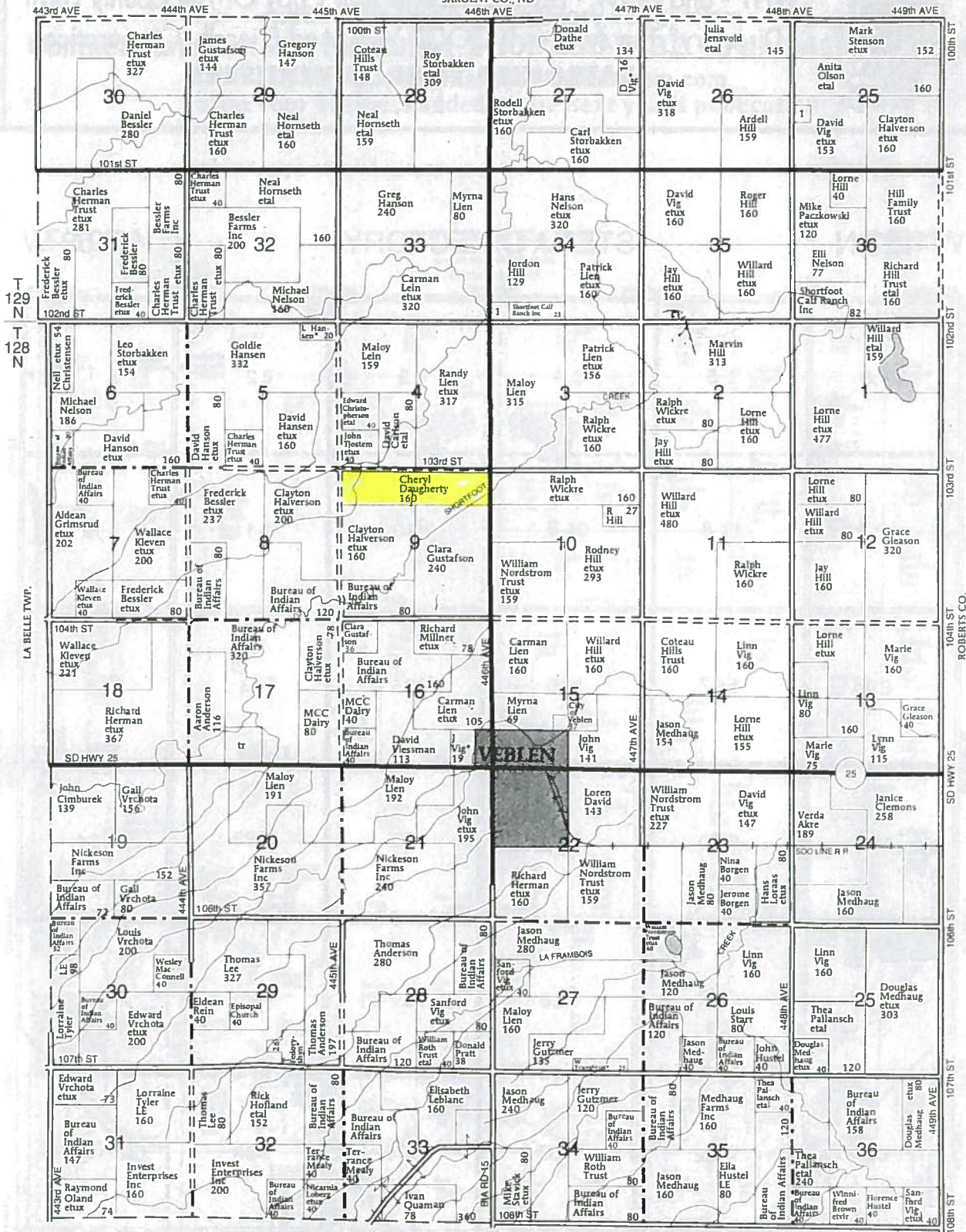


T-128-129-N

VEBLEN PLAT

R-53-W

(Landowners)
SARGENT CO., ND



MCKINLEY TWP.

Marshall County, SD

County Seat

Britton, SD

	R-59-W	R-58-W	R-57-W	R-56-W	R-54-W	R-53-W
T-128-N	Dayton Page 16-17	Newark Page 38-39	White Page 62-63	Victor Page 56-57	La Belle Page 28-29	Veblen Page 54-55
T-127-N	Stena Page 52-53	Miller Page 36-37	Pleasant Valley Page 46-47	Nordland Page 44-45 Wismer Page 64-65	Dumasce Page 18-19	McKinley Page 34-35
T-126-N	Weston Page 60-61	Lowell Page 32-33	Waverly Page 58-59	Hamilton Page 24-25	Lake Page 30-31	Red Iron Lake Page 48-49
T-125-N	Newport Page 42-43	Hickman Page 26-27	Sisseton Page 50-51	Fort Page 22-23	Eden Page 20-21	Buffalo Page 14-15
	R-59-W	R-58-W	R-57-W	R-56-W	R-55-W	R-53-W