

Aerial Map



©AgriData, Inc. 2012

map center: 45° 53' 6.19, 97° 18' 4.7
scale: 10073

Maps provided by:



©AgriData, Inc. 2012
www.AgriDataInc.com

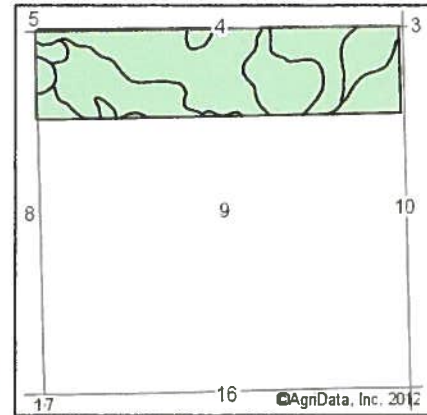
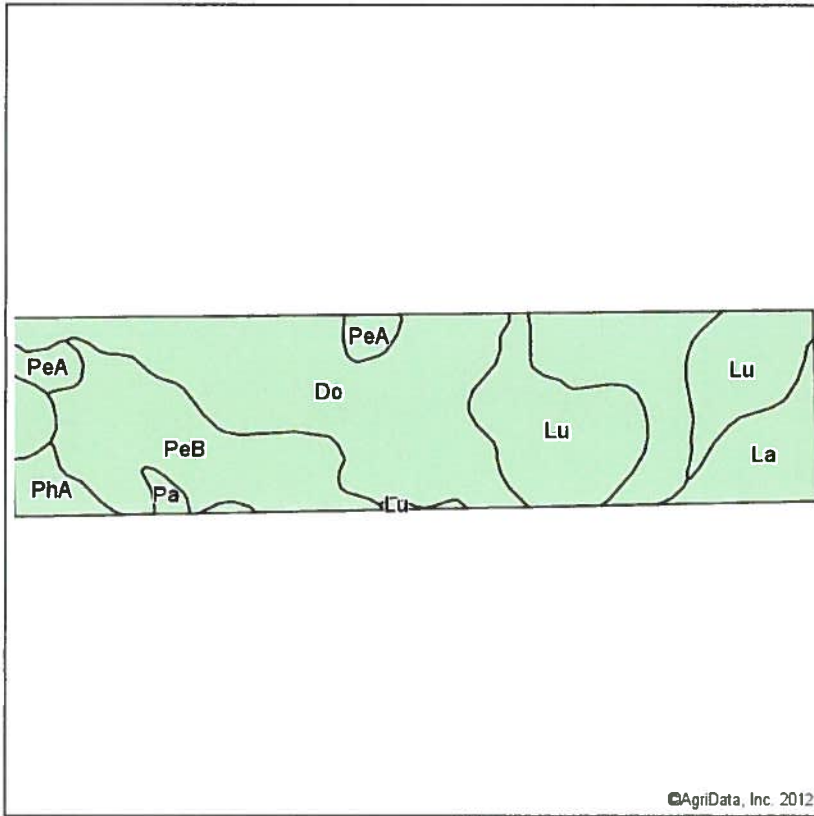
9-128N-53W
Marshall County
South Dakota



9/19/2012

Field borders provided by Farm Service Agency as of 5/21/2008. Aerial photography provided by Aerial Photography Field Office.

Soils Map



State: **South Dakota**
 County: **Marshall**
 Location: **9-128N-53W**
 Township: **Veblen**
 Acres: **155.3**
 Date: **9/19/2012**

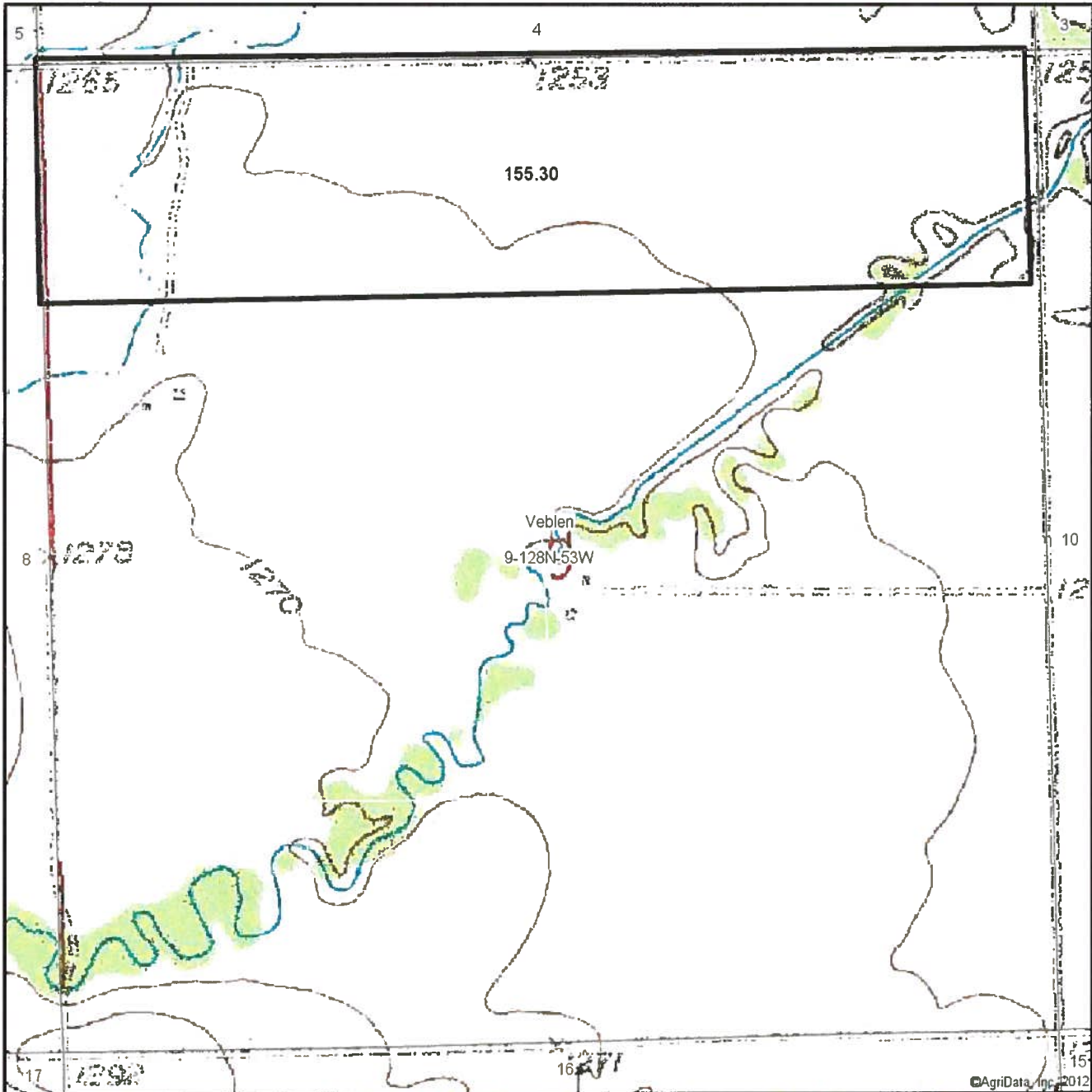
©AgriData, Inc. 2012

Field borders provided by Farm Service Agency as of 5/21/2008.
 Soils data provided by USDA and NRCS.



Code	Soil Description	Acres	Percent of field	Non-Irr Class	Productivity Index	Corn	Soybeans
Do	Castlewood silty clay	71.1	45.8%	IVw	60	50	19
Lu	Ludden silty clay	32.9	21.2%	IVw	57	46	16
PeB	Peever clay loam, 2 to 6 percent slopes	29.2	18.8%	IIIe	70	57	22
La	Lamoure silty clay loam	11.4	7.4%	IIIw	64	63	20
PeA	Peever clay loam, 0 to 2 percent slopes	4.8	3.1%	IIIs	77	65	25
PhA	Peever-Hamerly complex, 0 to 2 percent slopes	4.6	3.0%	IIIs	74	65	23
Pa	Parnell silty clay loam	1.3	0.8%	Vw	30	24	9
Weighted Average					62.3	52.2	19.2

Topography Map



©AgriData, Inc. 2012

map center: 45° 53' 6.19, 97° 18' 4.7
scale: 10073

9-128N-53W
Marshall County
South Dakota



9/19/2012

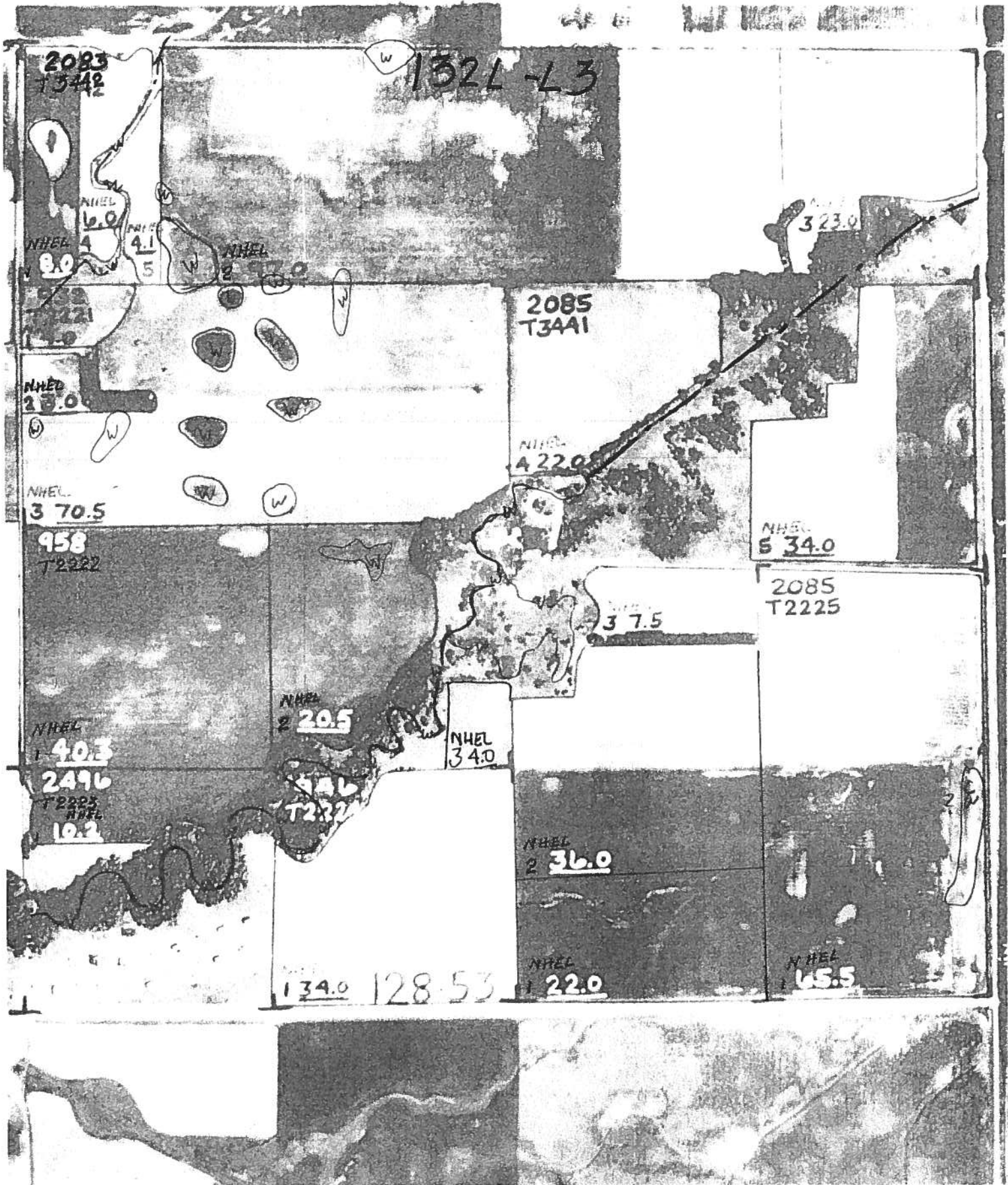
Maps provided by:

CUSTOMIZED ONLINE MAPPING
©AgriData, Inc. 2012
www.AgriDataInc.com

Field borders provided by Farm Service Agency as of 5/21/2008. Aerial photography provided by Aerial Photography Field Office.

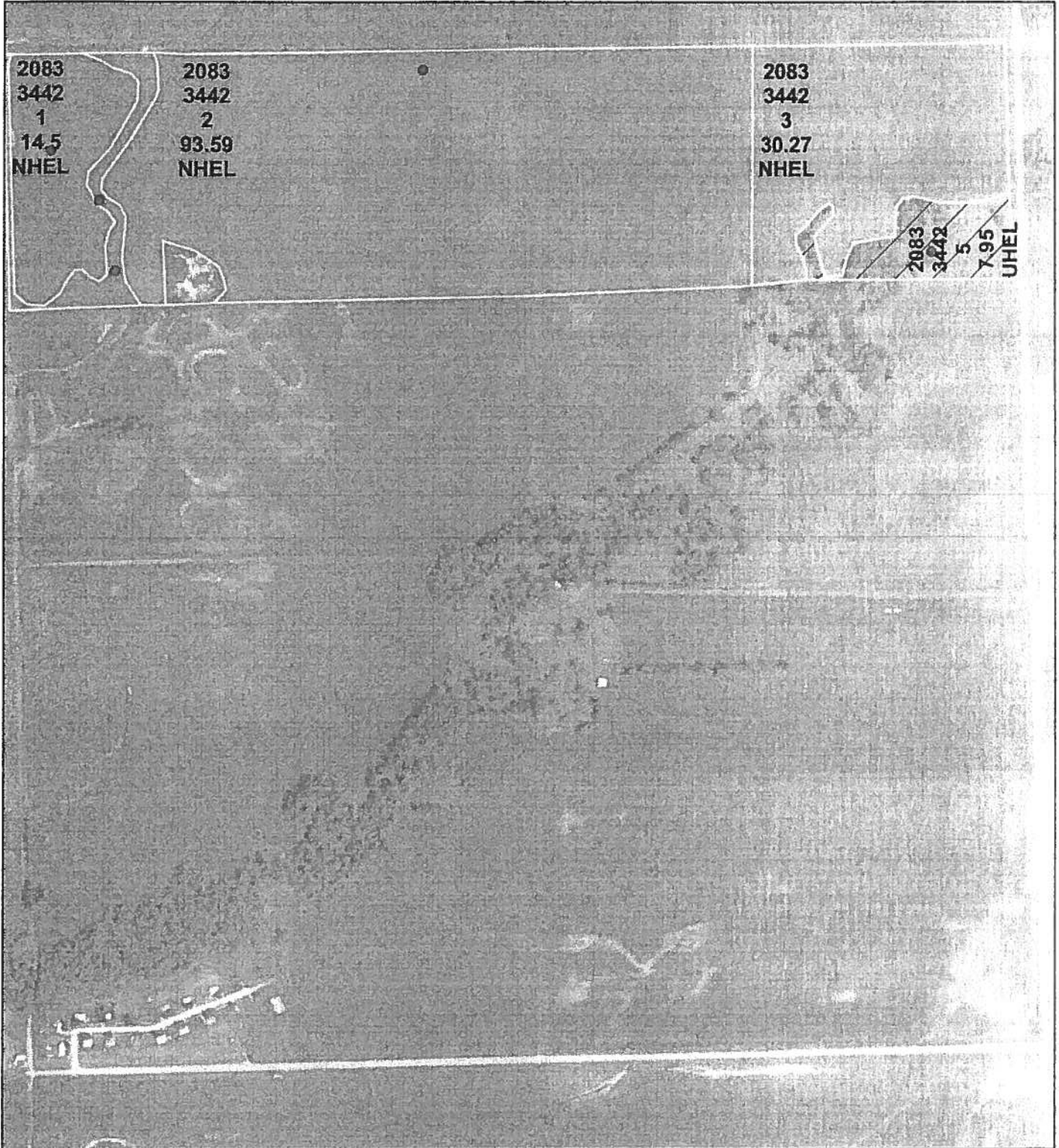
Re-worked
12-5-97

MAP NOT TO SCALE THIS IS NOT AN OFFICIAL WETLAND MAP





United States Department of Agriculture Farm Service Agency



South Dakota Marshall County

Section-Township-Range
PLSS: 9_128N_53W
Farm: 2083

Legend

Wetland Determination Identifiers

- Restricted Use
- Limited Restrictions
- Exempt from Conservation Compliance Provisions

Common Land Units

- Tract Boundaries



2010 Ortho-Photography - Not to Scale

USDA FSA maps are for FSA Program administration only. This map does not represent a legal survey or reflect actual ownership, rather it depicts the information provided directly from the producer and/or the 2010 ortho rectified imagery for South Dakota. The producer accepts the data 'as is' and assumes all risks associated with its use. The USDA Farm Service Agency assumes no responsibility for actual or consequential damage incurred as a result of any user's reliance on this data outside of FSA Programs.

1:8,272

Disclaimer: Wetland identifiers do not represent the size, shape or specific determination of the area. Refer to your original determination (CPA-02h and attached maps) for exact wetland boundaries and determinations, or contact NRCS.

January 05, 2011