

# COTEAU LAND COMPANY, LLC



Call Gordon Nielsen (605) 742-0416

Call Larry Lekness (605) 880-5933

Call Gary Hanson (605) 268-0448

PO Box 86, Sisseton, South Dakota 57262

Go to [www.coteauland.com](http://www.coteauland.com) for more details

## FARM LAND FOR RENT

**Drywood Lake and Goodwill Township, Roberts County, South Dakota**

261.7 +/- tillable acres and 440 +/- pasture acres for rent.

3 year lease available (2013 - 2015). Tenant to be responsible for fencing.

Property is located 4 miles south and 1 mile west of Sisseton.

### TRACT 1 (261.7 acres +/-):

acres of crop land

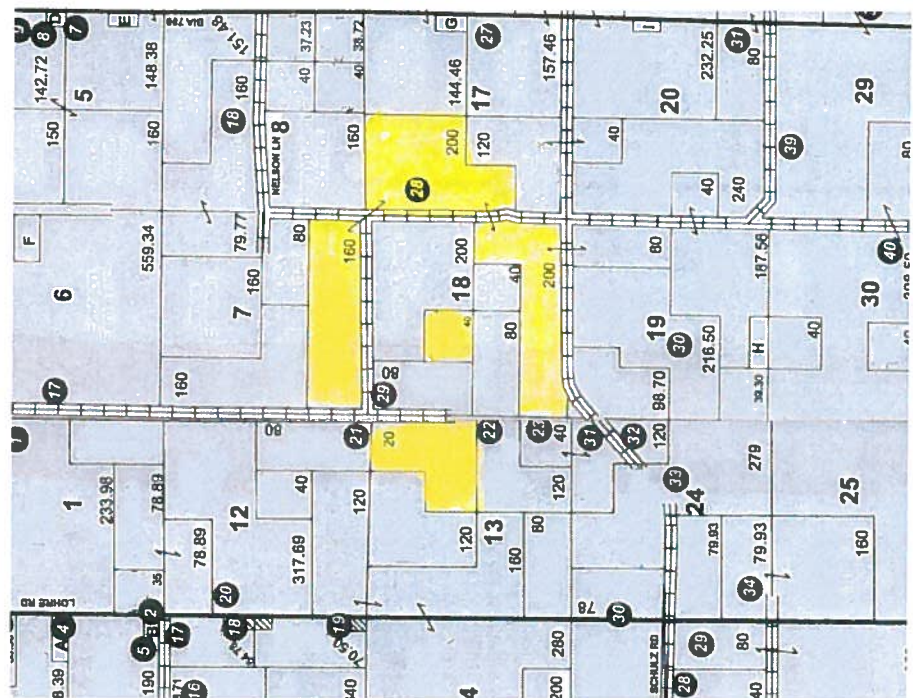
### TRACT 2 (440 acres +/-):

acres of pasture land

### TRACT 3 (701.7 acres +/-):

combined crop & pasture land

T-125-N DRYWOOD LAKE AND GOODWILL TOWNSHIP R-52-W



**BID FORMAT:** Written bids will be accepted by Coteau Land Company, LLC 520 2<sup>nd</sup> Ave. E., PO Box 9, Sisseton South Dakota 57262, until 4:00 p.m. on November 7, 2012. Owner reserves the right to reject any and all bids and to waive any irregularities in the proceedings.

**TERMS:** Three (3) year lease commencing January 1, 2013 and terminating December 31, 2015. Rental payments due one-half April 1<sup>st</sup> of each year and one-half October 1<sup>st</sup> of each year. Tenant responsible for fencing.

**INQUIRIES:** Informational packages and bid forms available upon request from Lessor's Agent. Call Coteau Land Company \* Gordon Nielsen (605) 742-0416, Larry Lekness (605) 880-5933 or Gary Hanson (605) 268-0448. Go to [www.coteauland.com](http://www.coteauland.com) for more details.