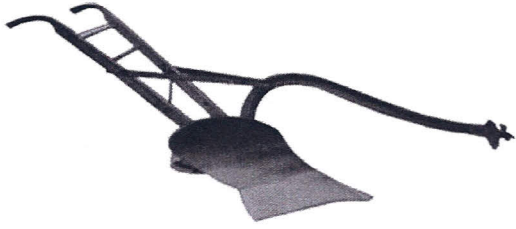


# COTEAU LAND COMPANY, LLC



Call *Coteau Land Company*

Larry Lekness (605) 698-7744 or (605) 880-5933

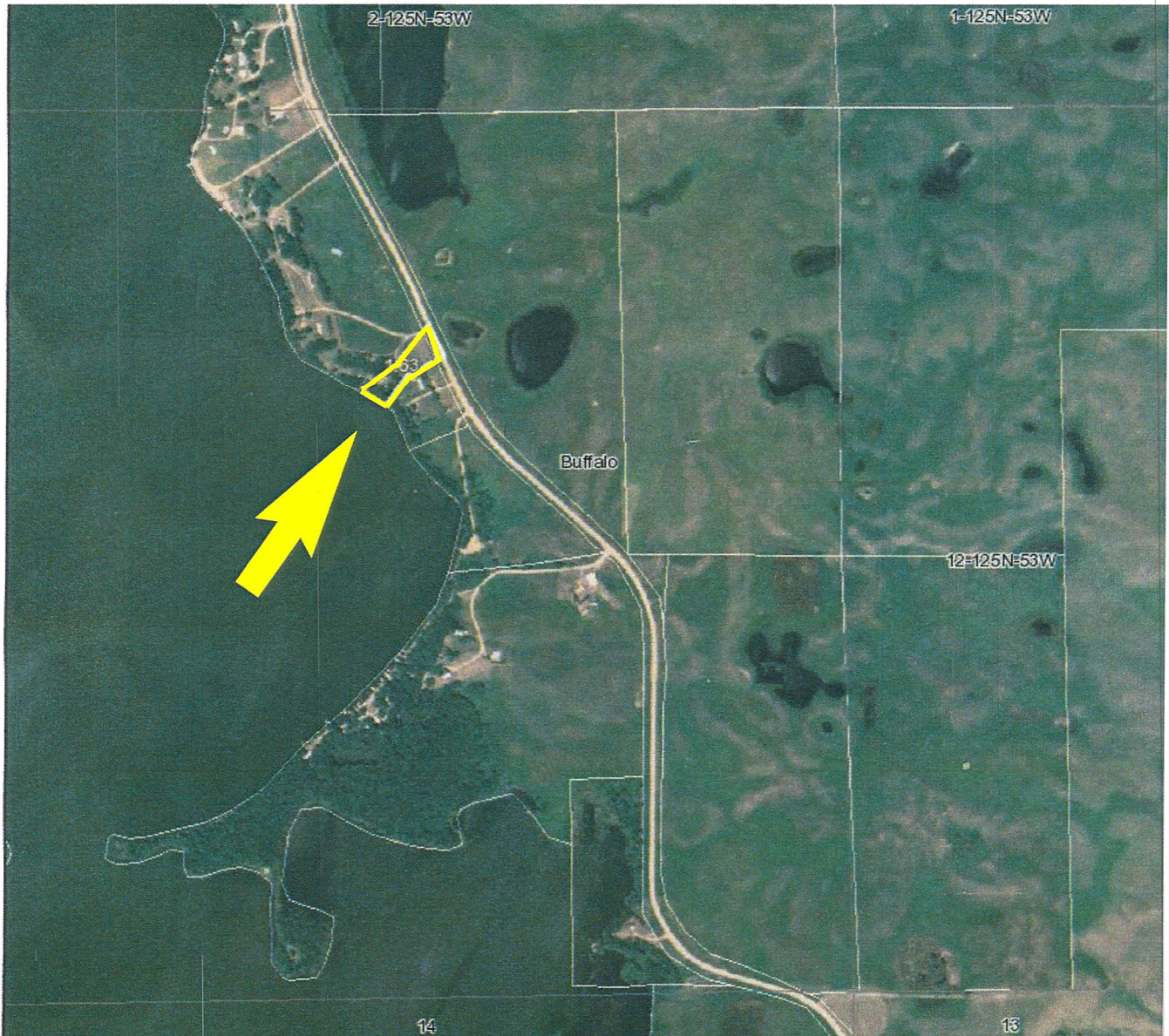
or Gordon Nielsen (605) 742-0416.

Go to [www.coteauland.com](http://www.coteauland.com) for more details.

PO Box 86, Sisseton, South Dakota 57262

## Lake Lot For Sale - Buffalo Lake

Very attractive lot on the east side of South Buffalo Lake, Marshall County, South Dakota. 1.5 acre lot with 104 ft of shore. Easy access. The property has a 14 x 60 mobile home with 2 outbuildings. Rural water and new septic system on site. Ready for fun and great location for a year around home. Listing Price \$125k.



## HELLEVANG'S 2ND ADDITION

IN GOV'T LOT 2 IN SECTION 11, T125N, R53W OF THE 5TH P.M.,  
MARSHALL, COUNTY, SOUTH DAKOTA



LOT G-1

65549 9A  
105 Ac

Book 3-172