

Aerial Map



map center: 45° 39' 22.94, 97° 10' 9.81
 scale: 23739

33-126N-52W
Roberts County
South Dakota

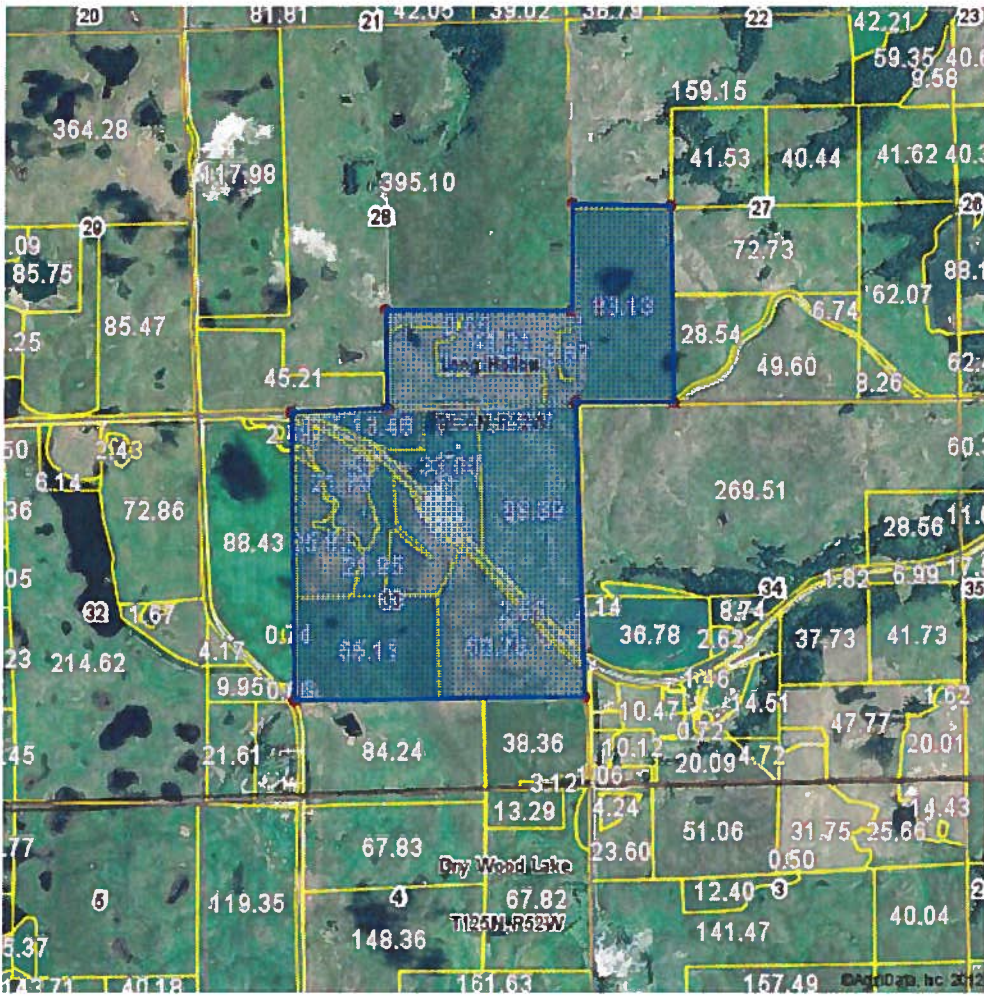


12/14/2012

Maps provided by:

 CUSTOMIZED ONLINE MAPPING
 ©AgriData, Inc. 2012
 www.AgriDataInc.com

Field borders provided by Farm Service Agency as of 5/21/2008. Aerial photography provided by Aerial Photography Field Office.





United States Department of Agriculture
Farm Service Agency

March 19, 2012

PLSS: 33_126N_52W
Farm: 6820

Roberts County
1:8,851 2012 Map



- Wetland Determination Identifiers**
- Restricted Use
 - ▼ Limited Restrictions
 - Exempt from Conservation Compliance Provisions

- Common Land Units
- ▨ Non Cropland

Disclaimer: Wetland identifiers do not represent the size, shape or specific determination of the area. Refer to your original determination (CPA-026 and attached maps) for exact wetland boundaries and determinations, or contact NRCS.

2010 Ortho-Photography - Not to Scale

FARM: 6820

Prepared: 12/12/12 2:31 PM

Crop Year: 2013

Page: 1 of 2

South Dakota
Roberts
Report ID: FSA-156EZ

U.S. Department of Agriculture
Farm Service Agency
Abbreviated 156 Farm Record

Operator Name [REDACTED] Farm Identifier SPLIT 6061 Recon Number

Farms Associated with Operator:
295, 1474, 1932, 7153, 7225

CRP Contract Number(s): None

Farmland	Cropland	DCP Cropland	WBP	WRP/EWP	CRP Cropland	GRP	Farm Status	Number of Tracts
516.3	171.8	171.8	0.0	0.0	0.0	0.0	Active	3
State Conservation	Other Conservation	Effective DCP Cropland	Double Cropped	MPL/FWP	FAV/WR History			
0.0	0.0	171.8	0.0	0.0	N			

Crop	Base Acreage	Direct Yield	CC Yield	CCC-505 CRP Reduction
WHEAT	2.3	24	24	0.0
OATS	33.8	53	53	0.0
BARLEY	11.0	40	40	0.0
Total Base Acres:	47.1			

Tract Number: 3782 Description: C13 W2SW 27 126 52

BIA Range Unit Number:

HEL Status: Classified as not HEL

Wetland Status: Tract contains a wetland or farmed wetland

WL Violations: None

FAV/WR History
N

Farmland	Cropland	DCP Cropland	WBP	WRP/EWP	CRP Cropland	GRP
83.2	0.0	0.0	0.0	0.0	0.0	0.0
State Conservation	Other Conservation	Effective DCP Cropland	Double Cropped	MPL/FWP		
0.0	0.0	0.0	0.0	0.0		

Owners: SANDRA BATIE

DUANE BATIE

Other Producers: [REDACTED]

South Dakota
 Roberts
 Report ID: FSA-156EZ

U.S. Department of Agriculture
 Farm Service Agency
 Abbreviated 156 Farm Record

FARM: 6820
 Prepared: 12/12/12 2:31 PM
 Crop Year: 2013
 Page: 2 of 2

Tract Number: 3783 Description: B13 S2SE 28 126 52 HEL

FAV/WR
 History
 N

BIA Range Unit Number:

HEL Status: HEL: conservation system is being actively applied

Wetland Status: Tract contains a wetland or farmed wetland

WL Violations: None

Farmland	Cropland	DCP Cropland	WBP	WRP/EWP	CRP Cropland	GRP
78.0	41.2	41.2	0.0	0.0	0.0	0.0
State Conservation	Other Conservation	Effective DCP Cropland	Double Cropped	MPL/FWP		
0.0	0.0	41.2	0.0	0.0		

Crop	Base Acreage	Direct Yield	CC Yield	CCC-505 CRP Reduction
WHEAT	0.5	24	24	0.0
OATS	7.4	53	53	0.0
BARLEY	2.4	40	40	0.0
Total Base Acres:	10.3			

Owners: SANDRA BATIE

DUANE BATIE

Other Producers: XXXXXXXXXX

Tract Number: 3784 Description: B13 NE, E2NW, N2SE, NESW 33 126 52 HEL

FAV/WR
 History
 N

BIA Range Unit Number:

HEL Status: HEL: conservation system is being actively applied

Wetland Status: Tract contains a wetland or farmed wetland

WL Violations: None

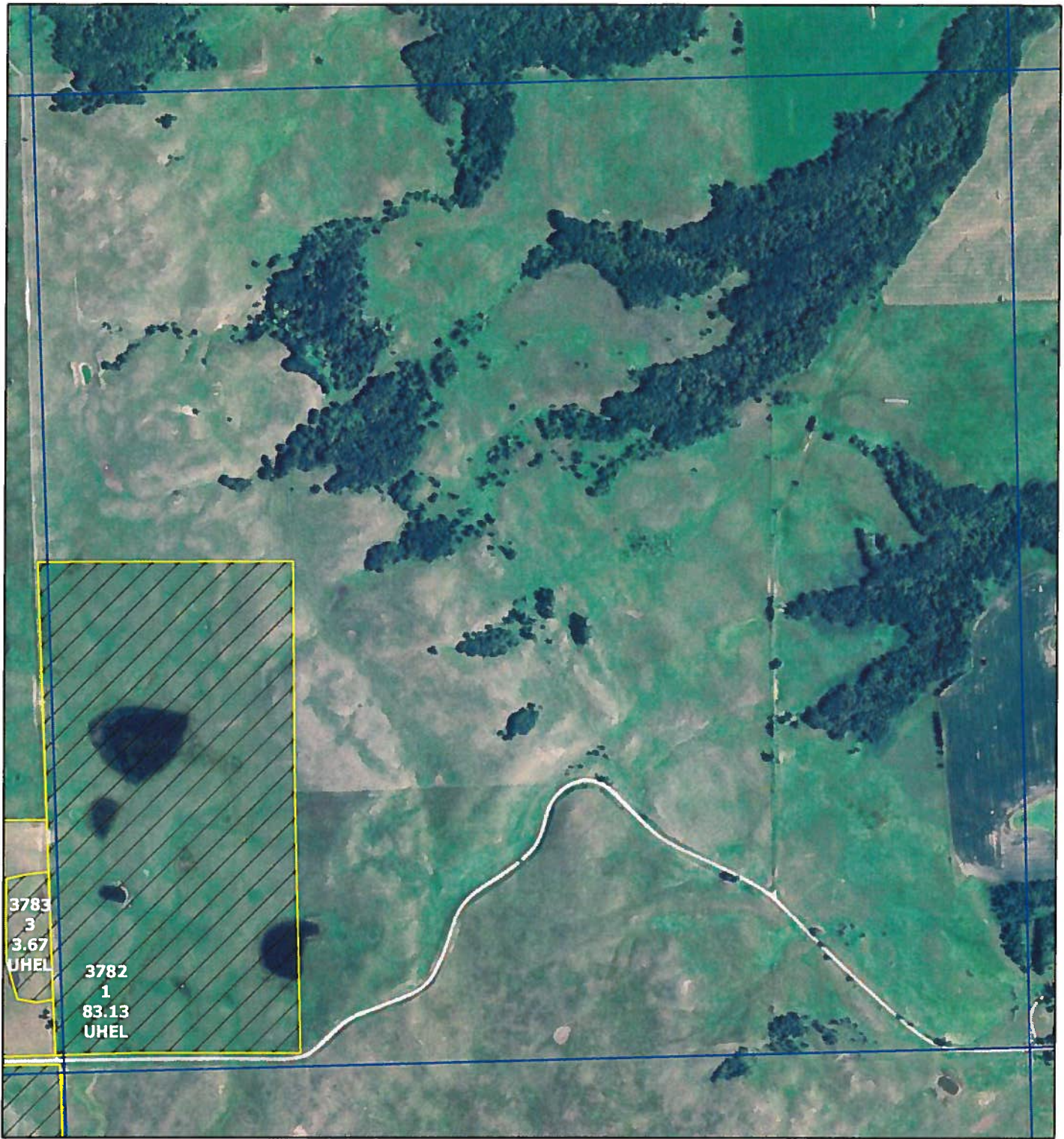
Farmland	Cropland	DCP Cropland	WBP	WRP/EWP	CRP Cropland	GRP
355.1	130.6	130.6	0.0	0.0	0.0	0.0
State Conservation	Other Conservation	Effective DCP Cropland	Double Cropped	MPL/FWP		
0.0	0.0	130.6	0.0	0.0		

Crop	Base Acreage	Direct Yield	CC Yield	CCC-505 CRP Reduction
WHEAT	1.8	24	24	0.0
OATS	26.4	53	53	0.0
BARLEY	8.6	40	40	0.0
Total Base Acres:	36.8			

Owners: SANDRA BATIE

DUANE BATIE

Other Producers: XXXXXXXXXX



United States Department of Agriculture
Farm Service Agency

March 19, 2012

PLSS: 27_126N_52W
Farm: 6820

Roberts County

1:8,833 2012 Map

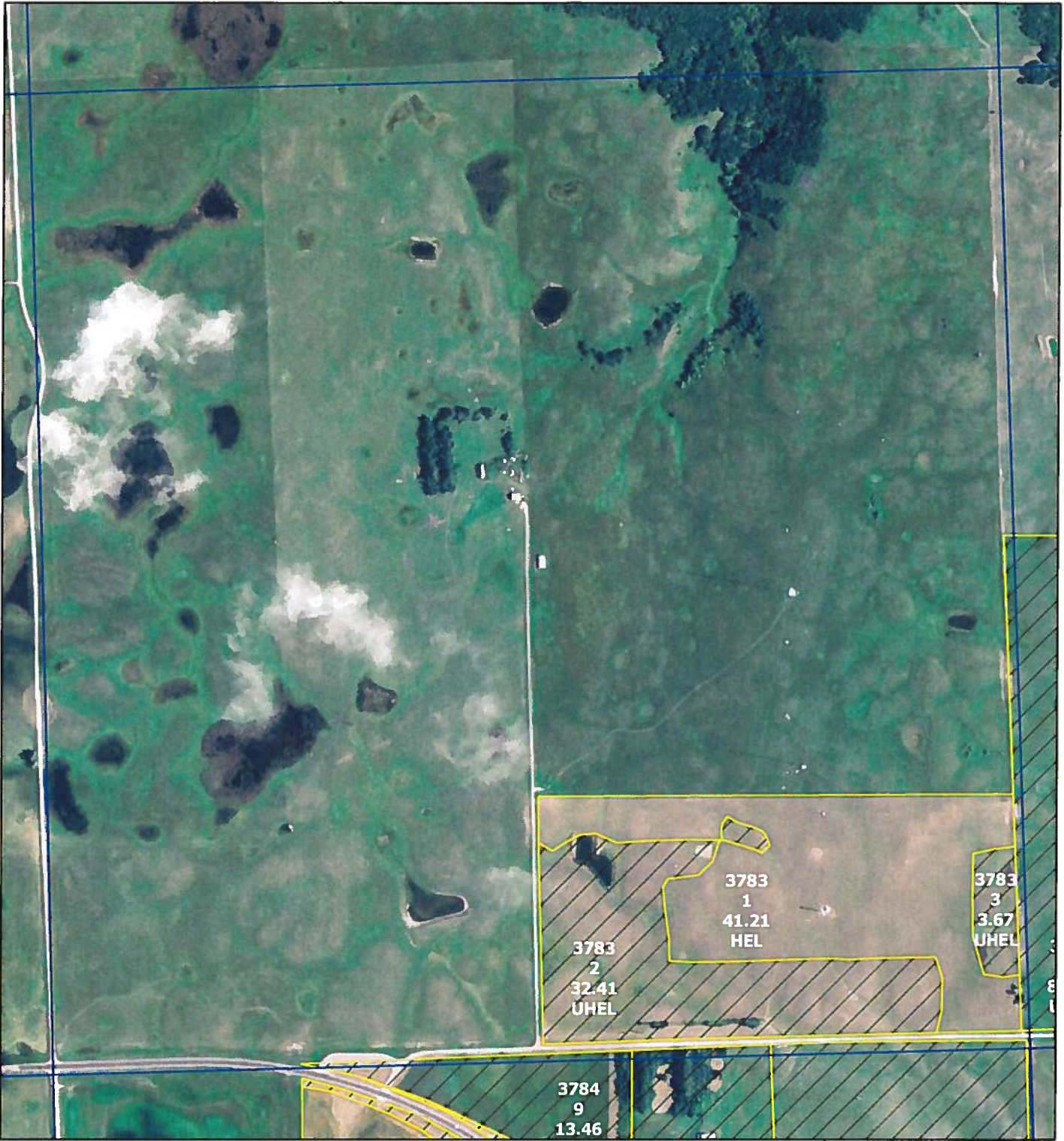


- Wetland Determination Identifiers**
- Restricted Use
 - ▼ Limited Restrictions
 - Exempt from Conservation Compliance Provisions

- Common Land Units
- ▨ Non Cropland

Disclaimer: Wetland identifiers do not represent the size, shape or specific determination of the area. Refer to your original determination (CPA-026 and attached maps) for exact wetland boundaries and determinations, or contact NRCS.

2010 Ortho-Photography - Not to Scale



United States Department of Agriculture
Farm Service Agency

March 19, 2012

PLSS: 28_126N_52W
Farm: 6820

Roberts County
1:8,832 2012 Map



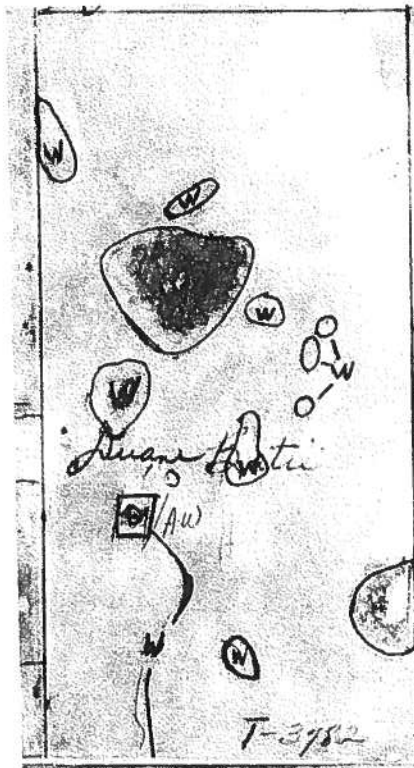
- Wetland Determination Identifiers**
- Restricted Use
 - ▼ Limited Restrictions
 - Exempt from Conservation Compliance Provisions

- Common Land Units
- ▨ Non Cropland

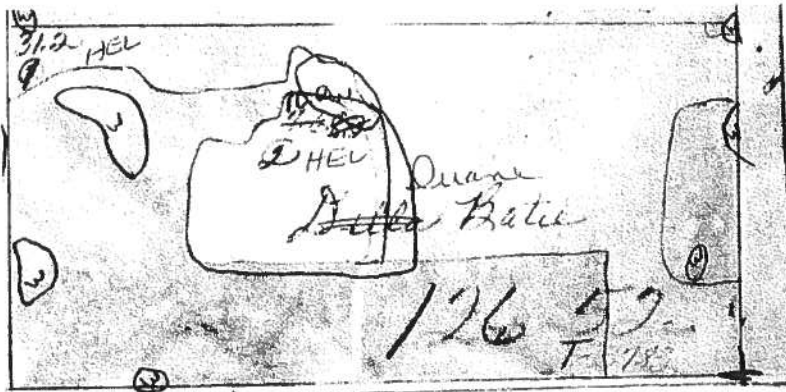
Disclaimer: Wetland identifiers do not represent the size, shape or specific determination of the area. Refer to your original determination (CPA-026 and attached maps) for exact wetland boundaries and determinations, or contact NRCS.

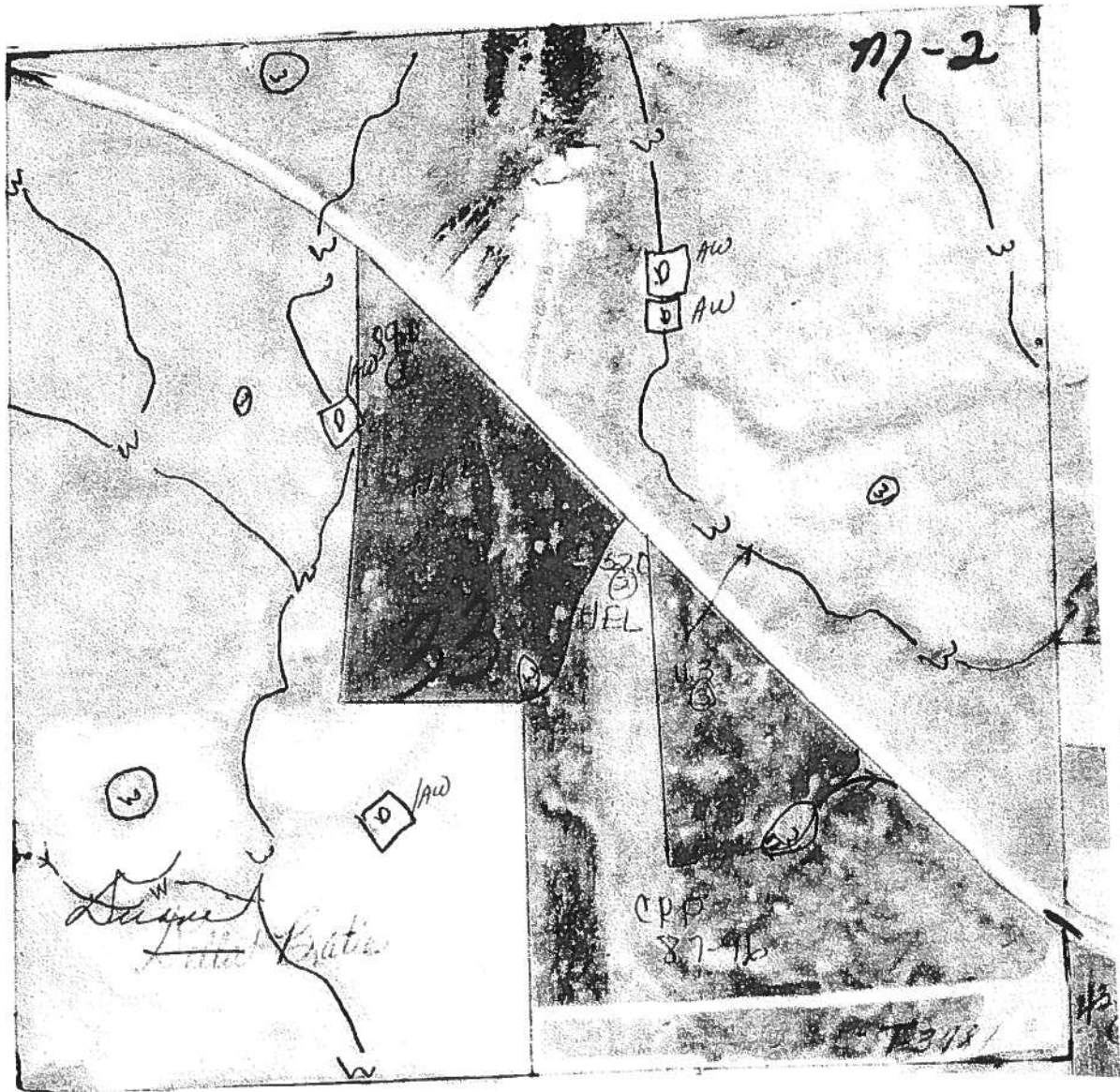
2010 Ortho-Photography - Not to Scale

NOT TO SCALE

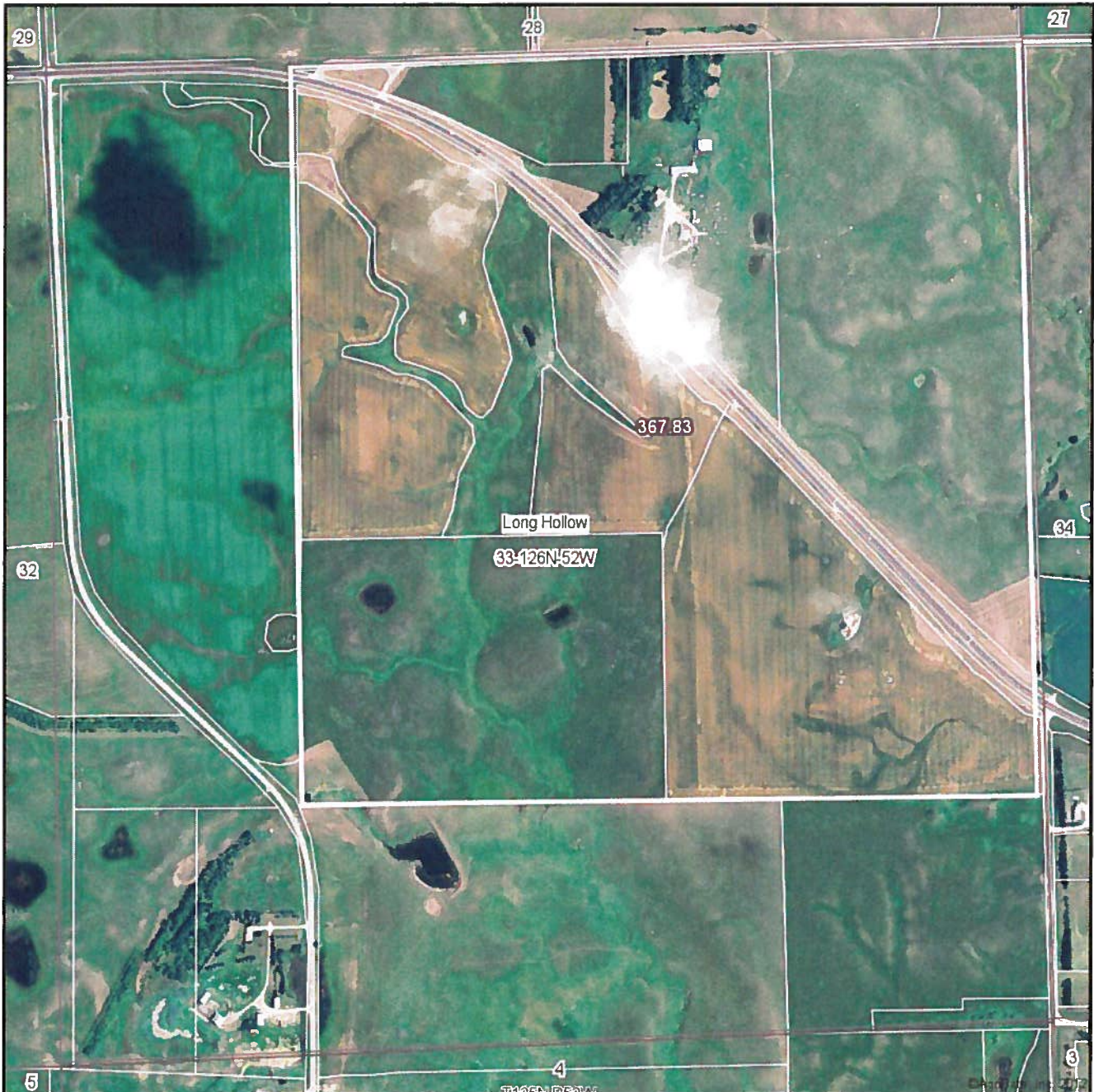


NOT TO SCALE



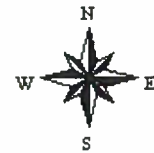


Aerial Map



map center: 45° 39' 9.11, 97° 10' 30.01
scale: 10220

33-126N-52W
Roberts County
South Dakota



12/5/2012

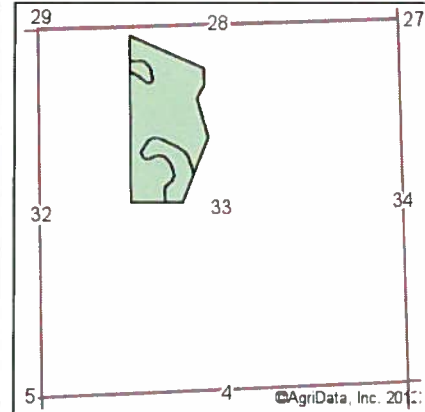
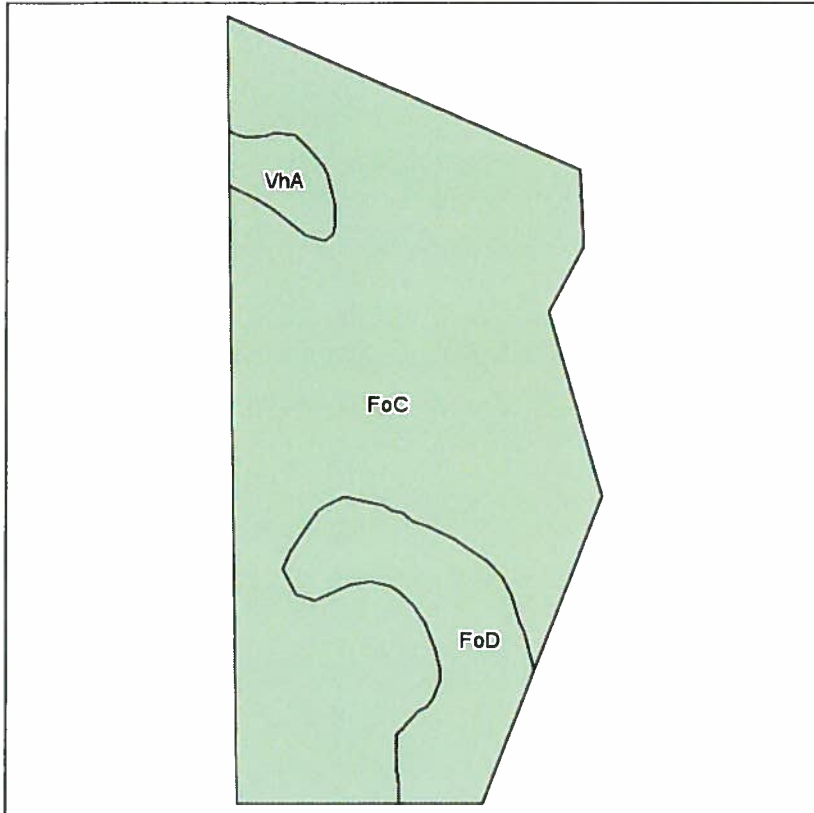
Maps provided by:



©AgriData, Inc. 2012
www.AgriDataInc.com

Field borders provided by Farm Service Agency as of 5/21/2008. Aerial photography provided by Aerial Photography Field Office.

Soils Map



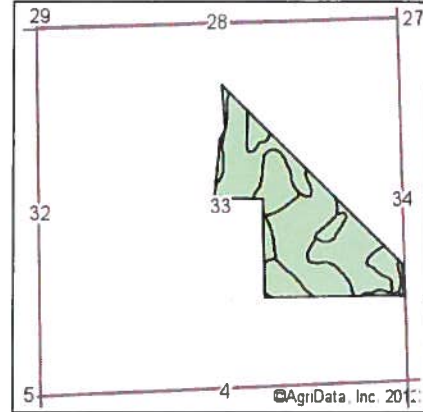
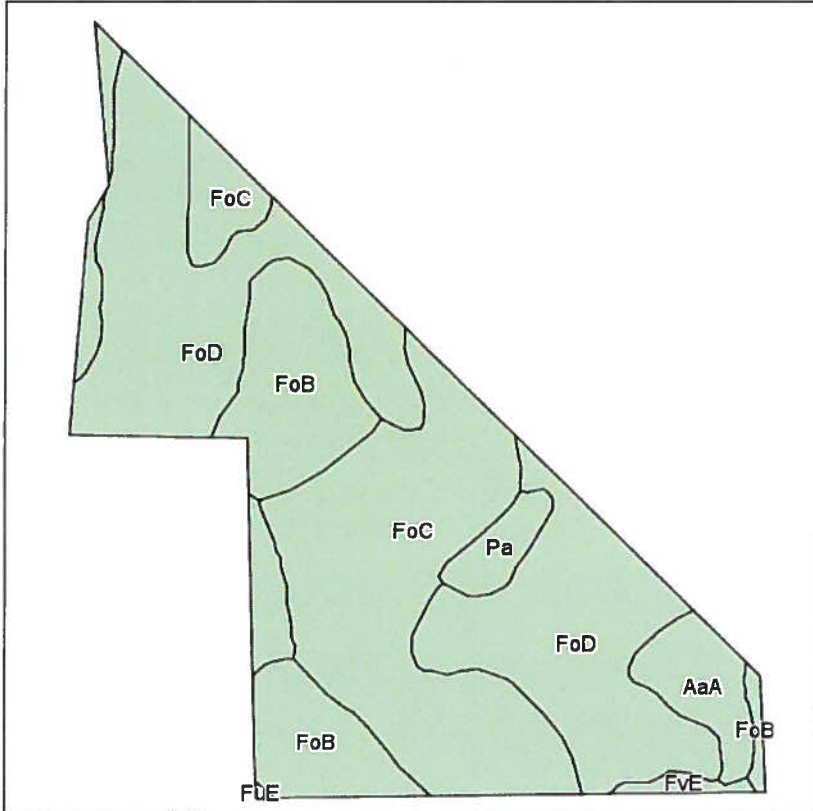
State: **South Dakota**
 County: **Roberts**
 Location: **33-126N-52W**
 Township: **Long Hollow**
 Acres: **51.3**
 Date: **12/5/2012**

Field borders provided by Farm Service Agency as of 5/21/2008.
 Soils data provided by USDA and NRCS.



Code	Soil Description	Acres	Percent of field	Non-Irr Class	Productivity Index	Corn	Soybeans
FoC	Forman-Aastad loams, 6 to 9 percent slopes	41.9	81.9%	IIIe	69	69	26
FoD	Forman-Aastad loams, 9 to 15 percent slopes	7.6	14.9%	IIIe	56	58	22
VhA	Vallers-Hamerly loams, 0 to 2 percent slopes	1.7	3.3%	IIIs	57	58	19
Weighted Average					66.7	67.1	25.2

Soils Map



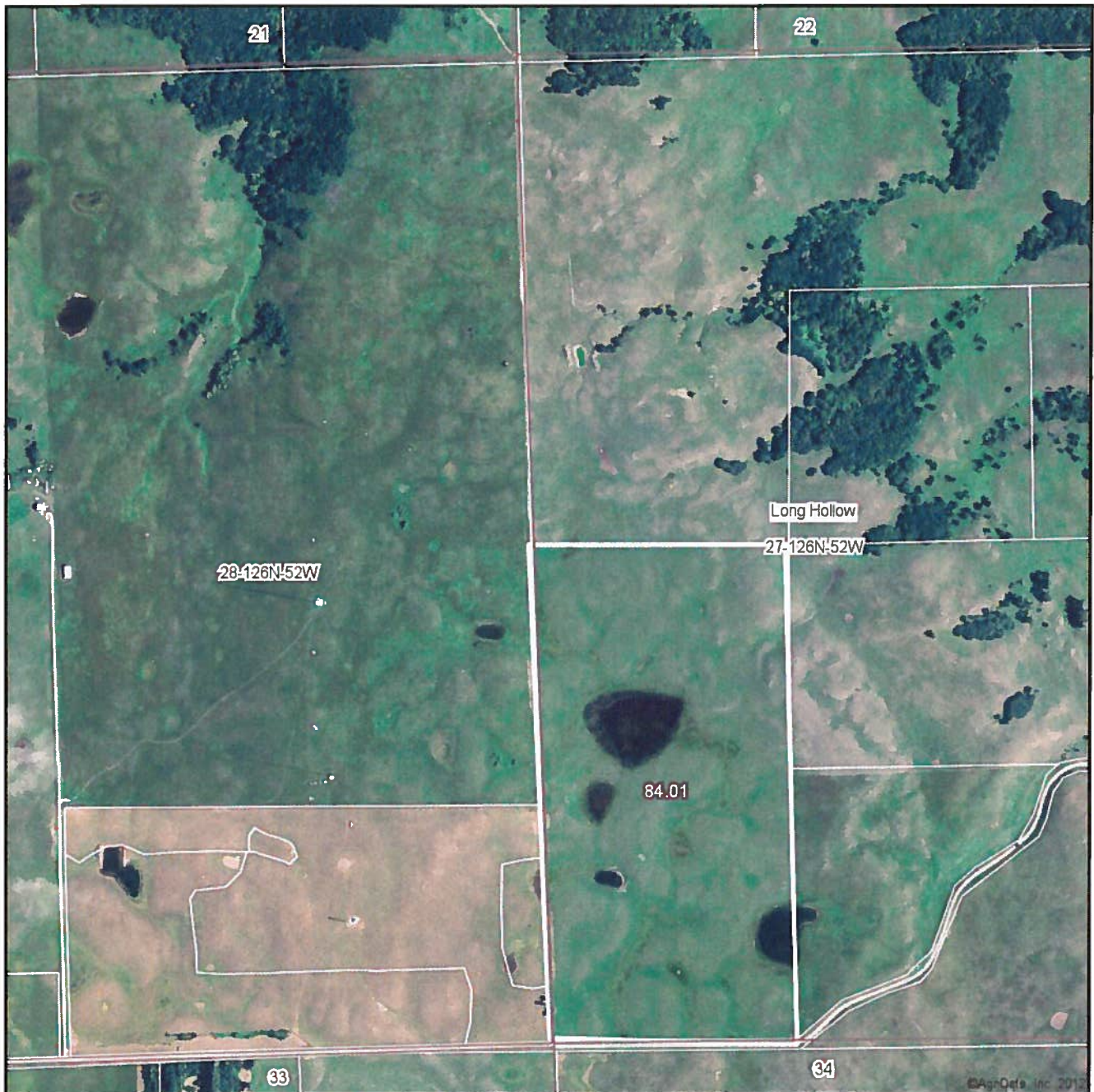
State: **South Dakota**
 County: **Roberts**
 Location: **33-126N-52W**
 Township: **Long Hollow**
 Acres: **89.1**
 Date: **12/5/2012**

Field borders provided by Farm Service Agency as of 5/21/2008.
 Soils data provided by USDA and NRCS.



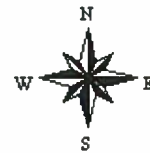
Code	Soil Description	Acres	Percent of field	Non-Irr Class	Productivity Index	Corn	Soybeans
FoD	Forman-Aastad loams, 9 to 15 percent slopes	38.2	42.7%	IIIe	56	58	22
FoC	Forman-Aastad loams, 6 to 9 percent slopes	29.5	33.2%	IIIe	69	69	26
FoB	Forman-Aastad loams, 2 to 6 percent slopes	14.5	16.3%	IIe	82	79	30
AaA	Aastad loam, 0 to 2 percent slopes	4	4.5%	I	92	92	34
Pa	Parnell silty clay loam	2.1	2.4%	Vw	31	29	11
FvE	Forman-Buse stony complex, 9 to 40 percent slopes	0.7	0.8%	VIIIs	25	17	7
FuE	Forman-Buse loams, 15 to 25 percent slopes	0.1	0.1%	VIe	29	22	8
Weighted Average					65.3	65.5	24.8

Aerial Map



map center: 45° 40' 2.07, 97° 9' 52.67
scale: 10203

27-126N-52W
Roberts County
South Dakota



12/5/2012

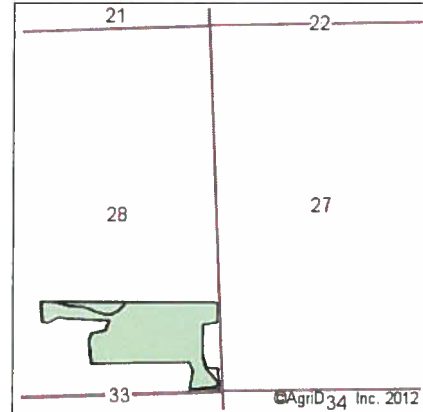
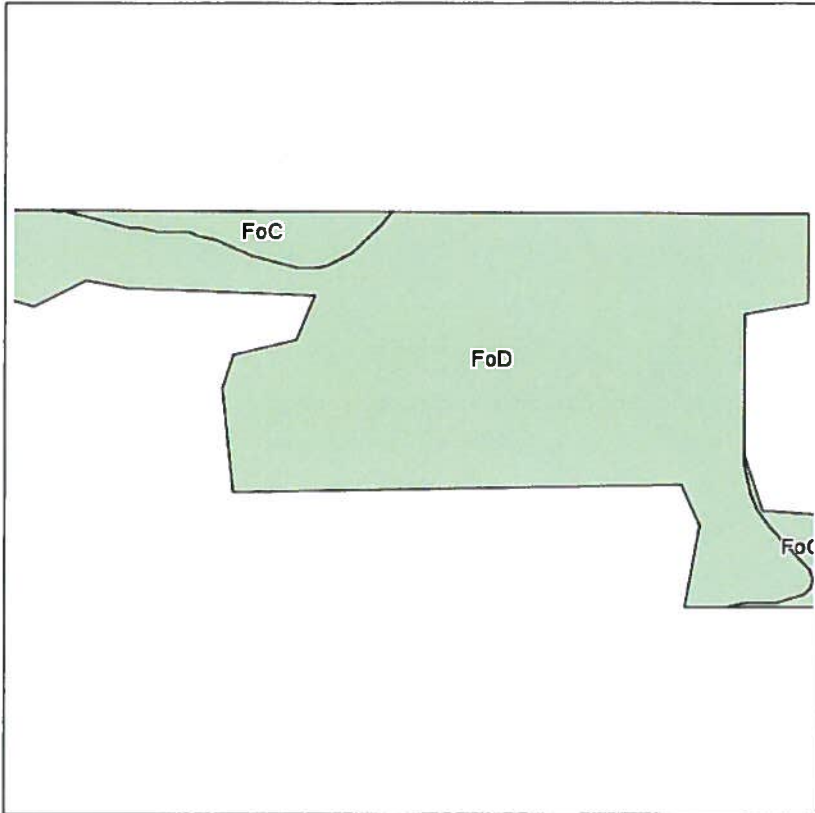
Maps provided by:



©AgriData, Inc. 2012
www.AgriDataInc.com

Field borders provided by Farm Service Agency as of 5/21/2008. Aerial photography provided by Aerial Photography Field Office.

Soils Map



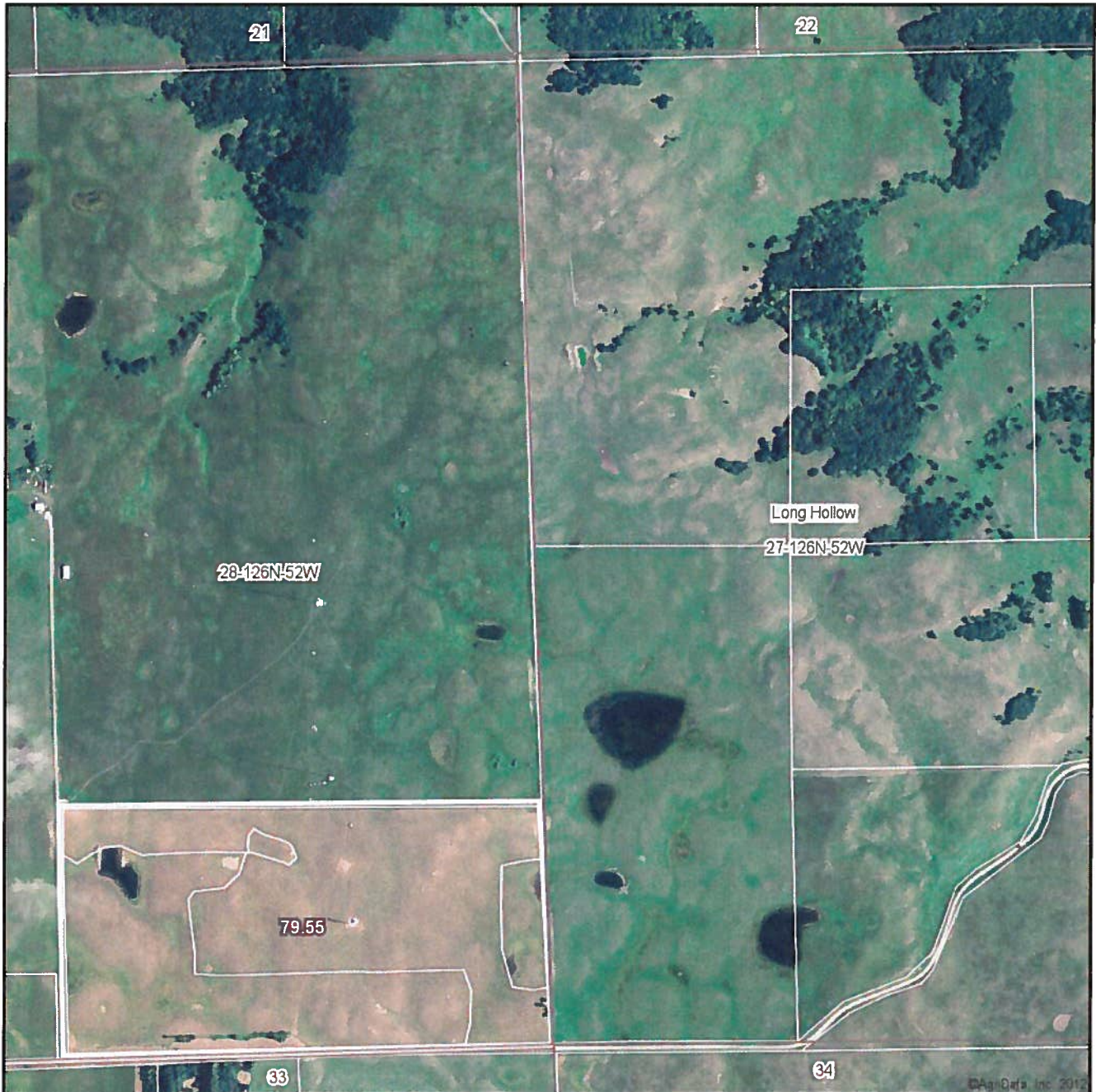
State: **South Dakota**
 County: **Roberts**
 Location: **27-126N-52W**
 Township: **Long Hollow**
 Acres: **41.5**
 Date: **12/5/2012**

Field borders provided by Farm Service Agency as of 5/21/2008.
 Soils data provided by USDA and NRCS.



Code	Soil Description	Acres	Percent of field	Non-Irr Class	Productivity Index	Corn	Soybeans
FoD	Forman-Aastad loams, 9 to 15 percent slopes	38.5	92.7%	IIIe	56	58	22
FoC	Forman-Aastad loams, 6 to 9 percent slopes	3	7.3%	IIIe	69	69	26
Weighted Average					56.9	58.8	22.3

Aerial Map



©AgriData, Inc. 2012

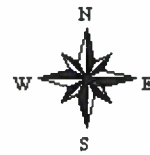
map center: 45° 40' 2.11, 97° 9' 52.67
scale: 10188

Maps provided by:



©AgriData, Inc. 2012
www.AgriDataInc.com

27-126N-52W
Roberts County
South Dakota



12/5/2012

Field borders provided by Farm Service Agency as of 5/21/2008. Aerial photography provided by Aerial Photography Field Office.