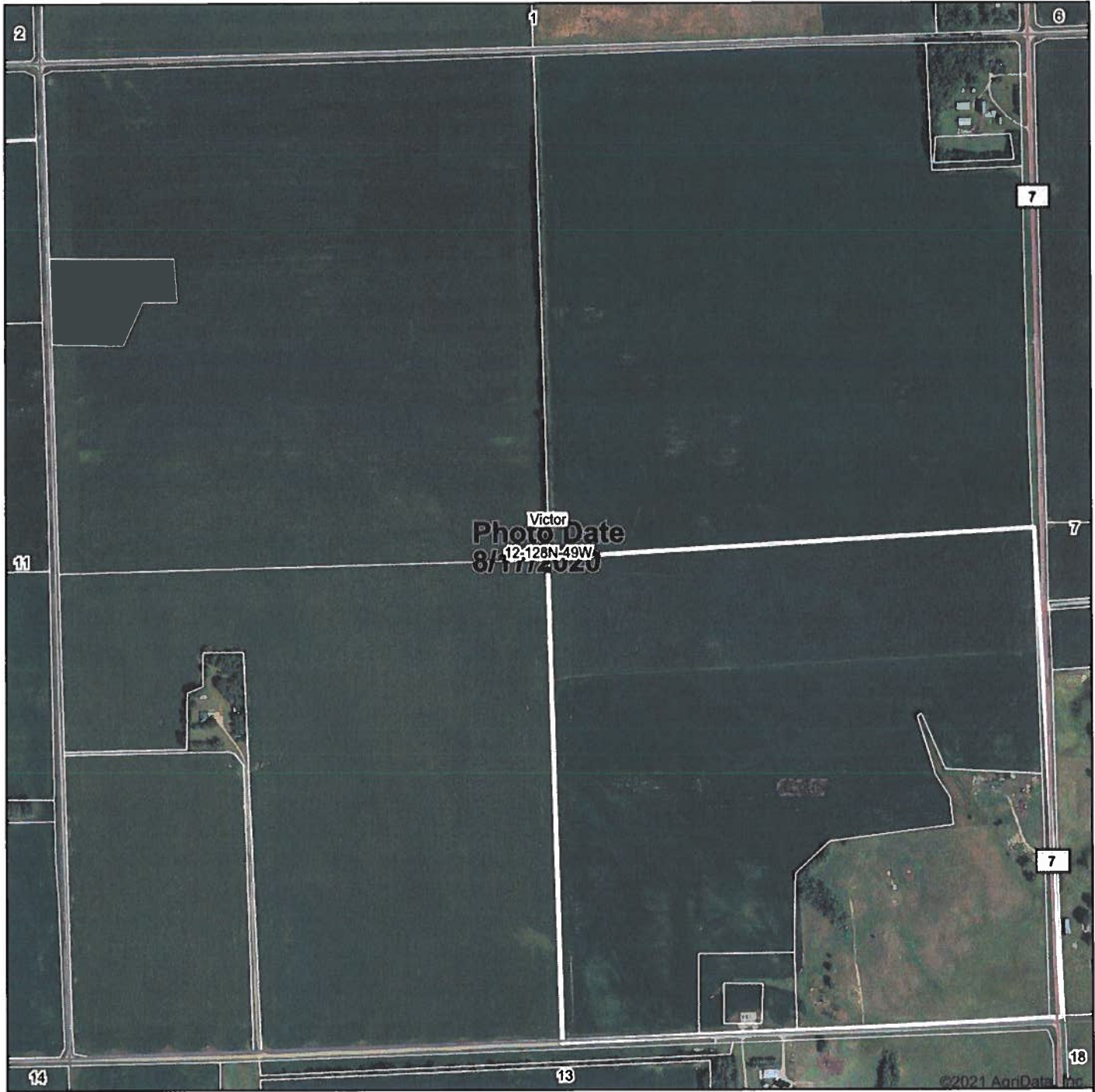
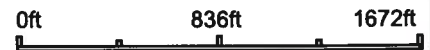


# Aerial Map



Map Center: 45° 53' 7.38, -96° 44' 25.6



**12-128N-49W**  
**Roberts County**  
**South Dakota**



9/1/2021



Field borders provided by Farm Service Agency as of 5/21/2008.

# TRACT 1

Tract 1

LAND AREA:

Cropland:	120	Acres
Pasture/NC:	35.5	Acres
<b>Total:</b>	<b>155.5</b>	<b>Acres</b>

IMPROVEMENTS: There are no improvements on this Tract.

Victor Twp:  
SE1/4 Exc OL A & EXC  
12-128-49

SOILS INFORMATION:

LAND CLASS:	SYM:	DESC:	Soil Rating	% SLOPE:	AC.
IIw	Bo	Borup silt loam	.653	0 - 1	1
IIe	EcB	Eckman loam	.790	2 - 6	74
IIe	PoB	Poinsett silt loam	.848	2 - 6	31
IIIs	Dm	Divide-Marysland loams	.559	0 - 2	3
IIIe	EeC	Eckman-Zell complex	.603	6 - 9	11
VIe	StD	Sisseton-Heimdal loams	.351	9 - 25	11
VIe	ZeD	Zell-Eckman complex	.327	9 - 25	26

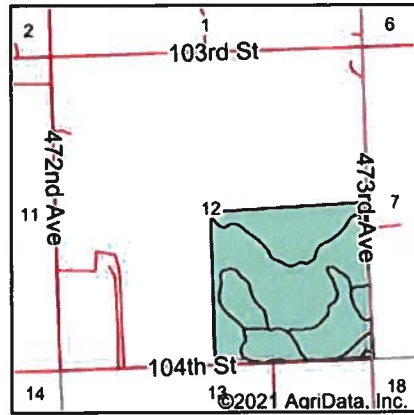
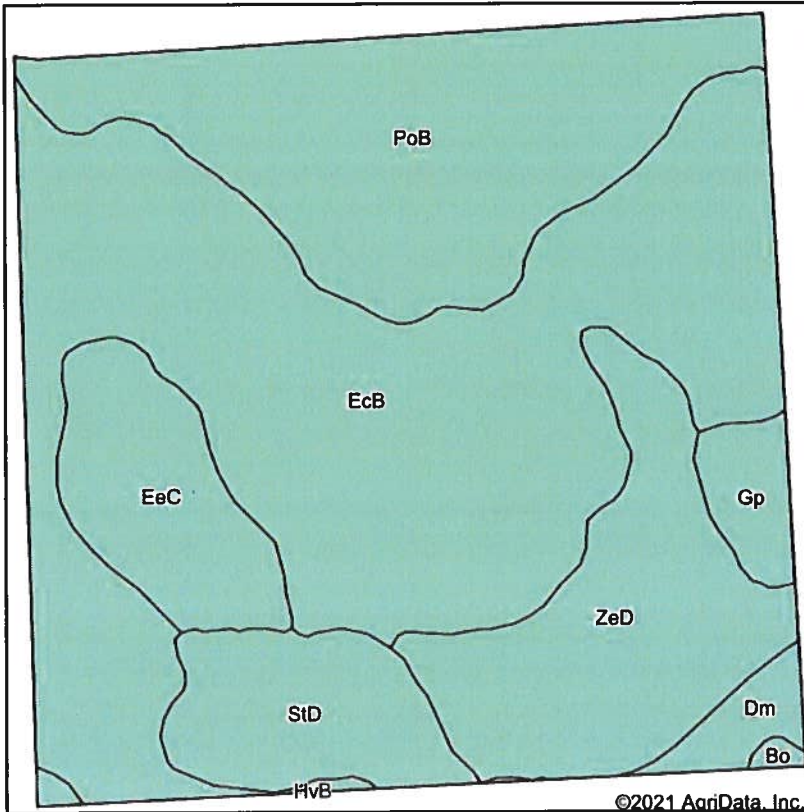
Class 2: 106 Ac (68%), Class 3: 14 Ac (9%), Class 6: 37 Ac (23%)

The main soil types on this tract are Class 2 Eckman loam. These are good producing soils on 2% to 6% slopes. There are smaller amounts of Class 2 Borup silt loam, Poinsett silt loam, Class 3 Divide-Marysland loams, Eckman-Zell complex, Class 6 Sisseton-Heimdal loams and Zell-Eckman complex.

Due to computer rounding some numbers may vary slightly.

**TRACT 1**

### Soils Map



State: **South Dakota**  
 County: **Roberts**  
 Location: **12-128N-49W**  
 Township: **Victor**  
 Acres: **---**  
 Date: **9/1/2021**



Soils data provided by USDA and NRCS.

Area Symbol: SD109, Soil Area Version: 21

Code	Soil Description	Acres	Percent of field	Non-Irr Class *c	Productivity Index	Corn	Soybeans	*n NCCPI Soybeans	
EcB	Eckman silt loam, 1 to 6 percent slopes	74.59	46.4%	Ile	83			70	
PoB	Poinsett-Waubay silty clay loams, 1 to 6 percent slopes	33.89	21.1%	Ile	89			73	
ZeD	Zell-Eckman complex, 9 to 25 percent slopes	22.05	13.7%	Vle	47	38	13	52	
EeC	Eckman-Zell complex, 6 to 9 percent slopes	11.78	7.3%	IIIle	67	65	24	52	
StD	Sisseton-Esmond-Heimdal, complex, 6 to 20 percent slopes, moderately eroded	11.12	6.9%	IVe	43			44	
Gp	Orthents, gravelly	3.55	2.2%	VIIIIs	0	5	2	3	
Dm	Divide-Marysland loams	2.74	1.7%	IIIs	52	58	19	26	
HvB	Heimdal-Svea loams, 2 to 6 percent slopes	0.58	0.4%	Ile	83	82	31	54	
Bo	Borup silt loam	0.37	0.2%	IVw	57	54	17	42	
<b>Weighted Average</b>						<b>73</b>	<b>11.5</b>	<b>4.1</b>	<b>*n 62.7</b>

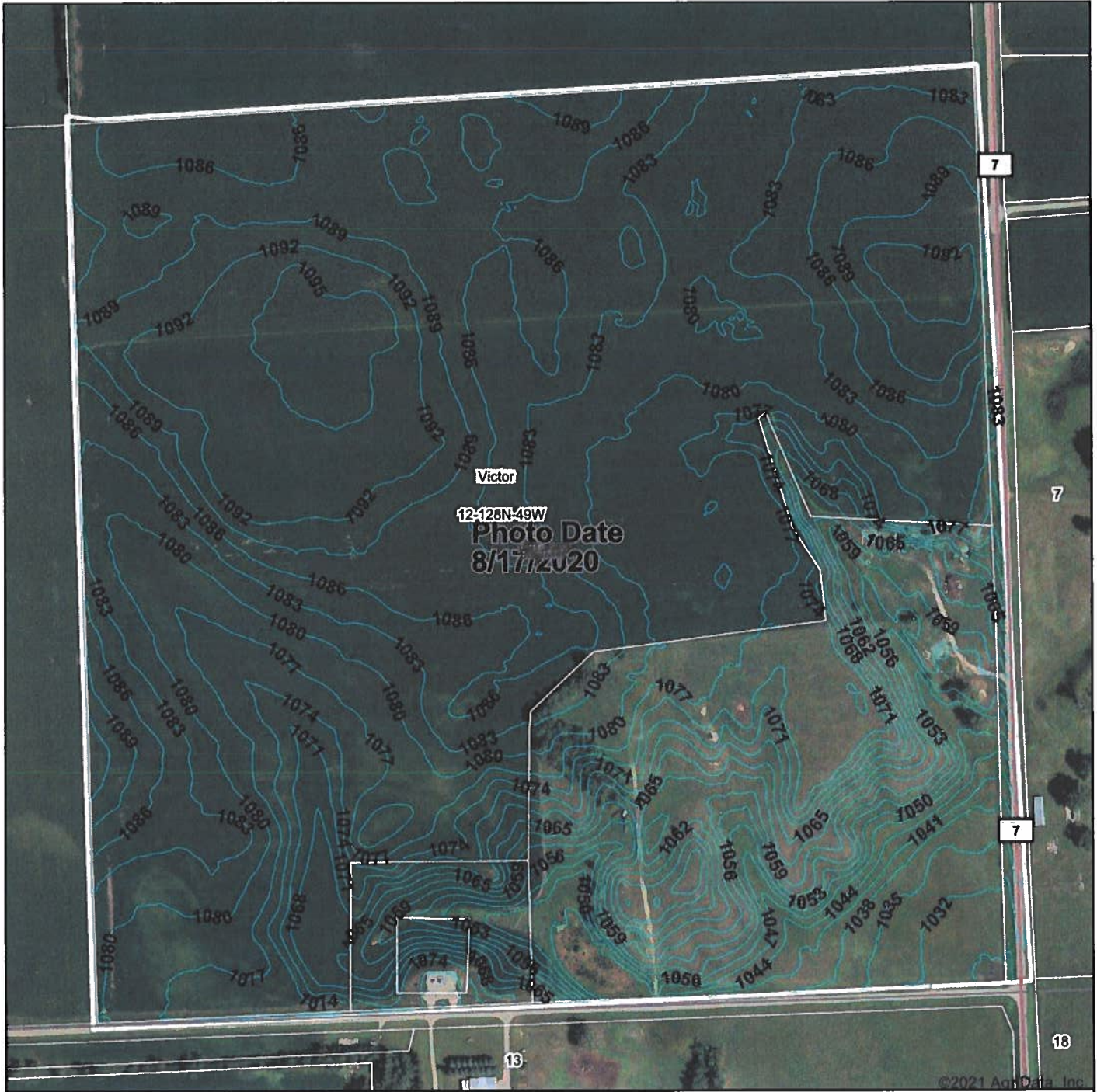
\*n: The aggregation method is "Weighted Average using all components"

\*c: Using Capabilities Class Dominant Condition Aggregation Method

Soils data provided by USDA and NRCS.

# TRACT 1

# Topography Contours



©2021 AgriData, Inc.

Source: USGS 3 meter dem

Interval(ft): 3.0

Min: 1,028.2

Max: 1,097.8

Range: 69.6

Average: 1,077.4

Standard Deviation: 14.14 ft



9/1/2021

**12-128N-49W**  
**Roberts County**  
**South Dakota**

Map Center: 45° 53' 7.38, -96° 44' 25.6

Maps Provided By:

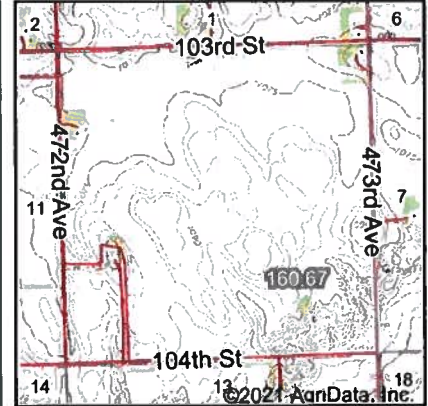


© AgriData, Inc. 2021 www.AgriDataInc.com

Field borders provided by Farm Service Agency as of 5/21/2008.

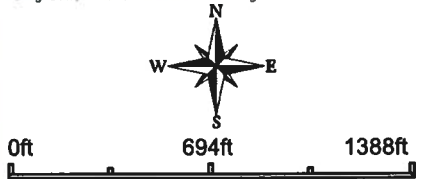
# TRACT 1

# Wetlands Map



State: **South Dakota**  
 Location: **12-128N-49W**  
 County: **Roberts**  
 Township: **Victor**  
 Date: **9/1/2021**

Maps Provided By  
  
 CUSTOMIZED ONLINE MAPPING  
 © AgnData, Inc. 2021 www.AgnDataInc.com



Classification Code	Type	Acres
PEM1A	Freshwater Emergent Wetland	3.09
Total Acres		3.09

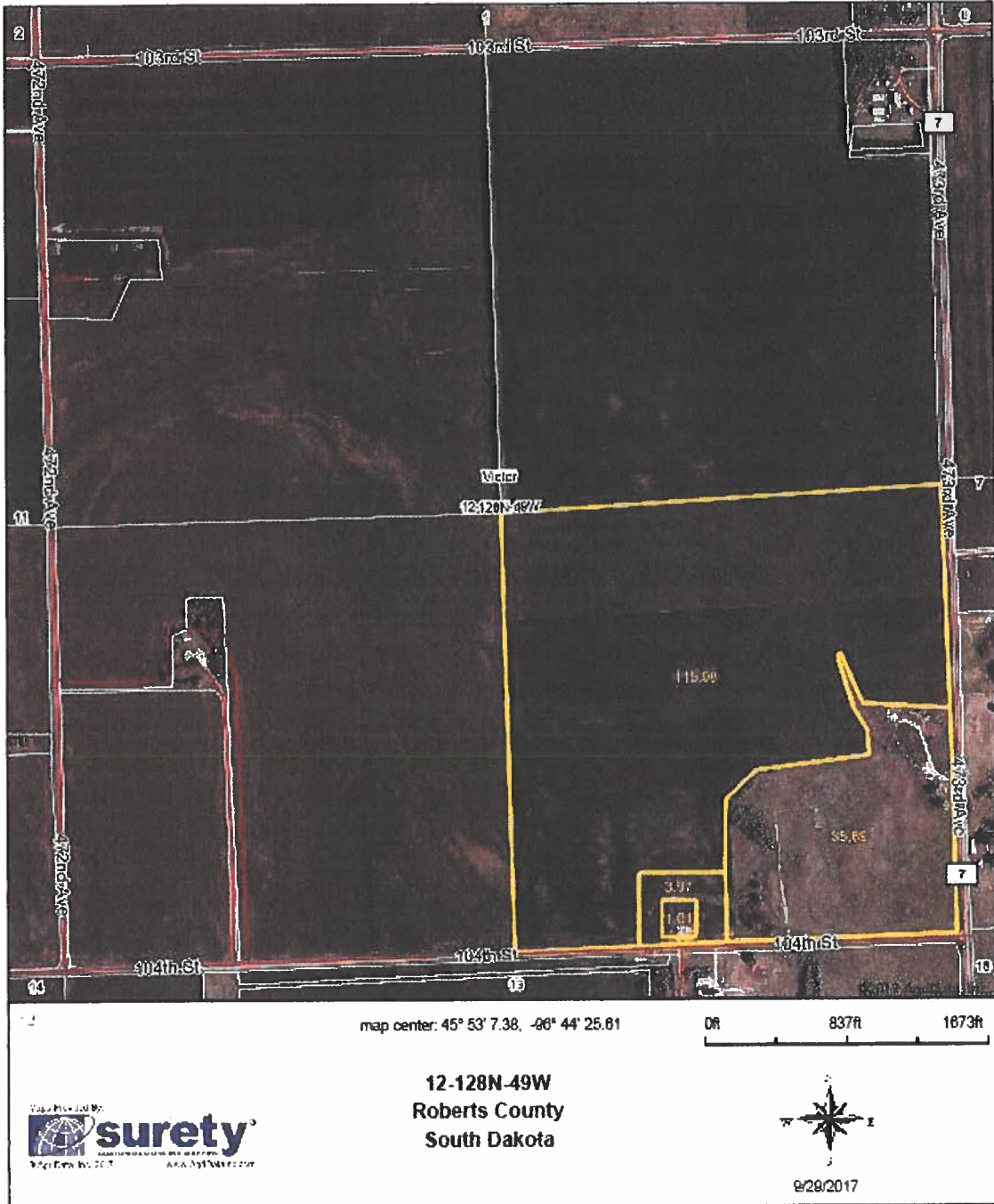
Data Source: National Wetlands Inventory website. U.S. DoI, Fish and Wildlife Service, Washington, D.C. <http://www.fws.gov/wetlands/>

Field borders provided by Farm Service Agency as of 5/21/2008.

# TRACT 1

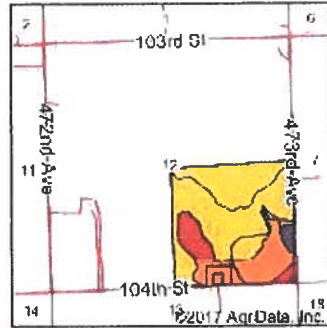
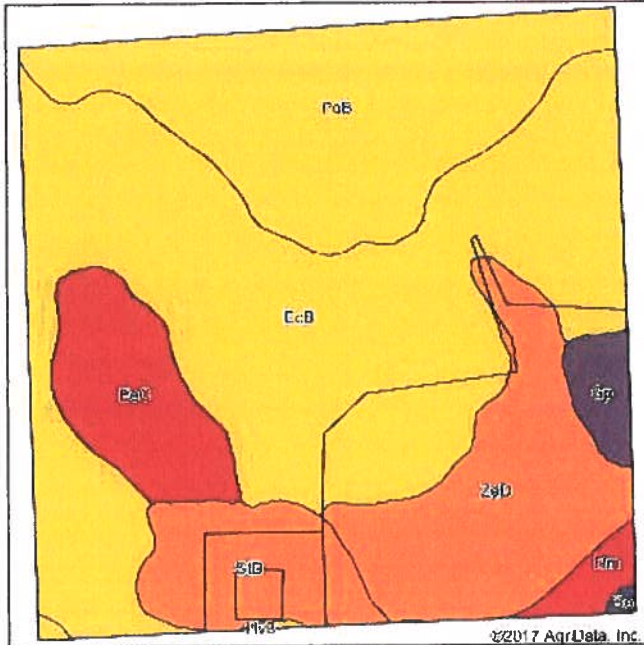
# LAND USE MAP

## Aerial Map



# TRACT 1

**Soils Map**



State: South Dakota  
 County: Roberts  
 Location: 12-128N-49W  
 Township: Victor  
 Acres: 156.65  
 Date: 9/29/2017



Soils data provided by USDA and NRCS

Area Symbol: SD109, Soil Area Version 17

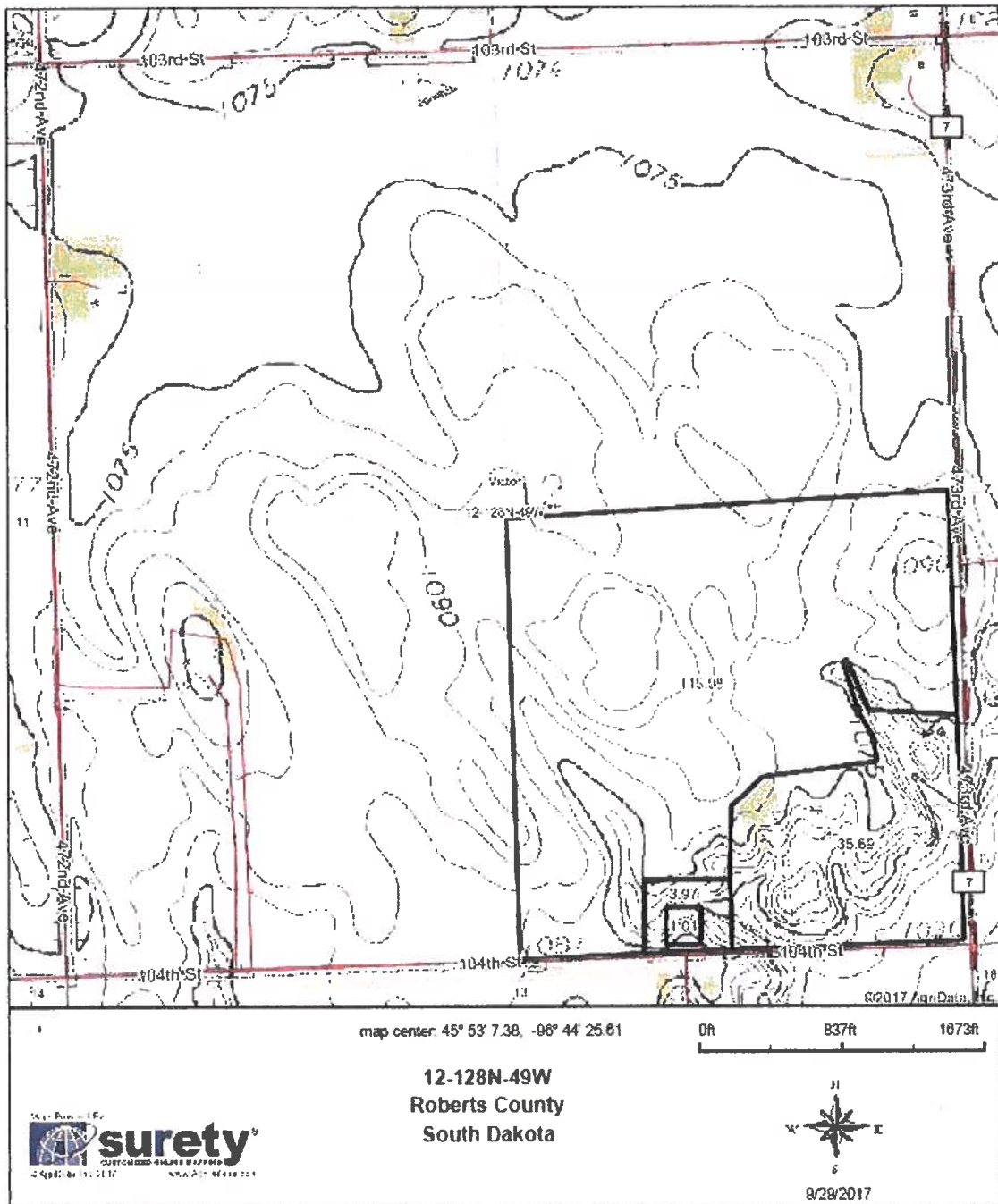
Code	Soil Description	Acres	Percent of field	Non-ir Class Legend	Non-ir Class *c	Productivity Index	Com
EcB	Eckman loam, 2 to 6 percent slopes	73.05	46.5%		Ile	83	84
PoB	Polmesl-Waubay silty clay loams, 1 to 6 percent slopes	33.19	21.2%		Ile	89	
ZeD	Zell-Eckman complex, 9 to 25 percent slopes	21.77	13.9%		Vle	47	38
EcC	Eckman-Zell complex, 6 to 9 percent slopes	11.78	7.5%		Ile	67	65
B1D	Blaeeton-Helmdal loams, 9 to 25 percent slopes	11.02	7.0%		Vle	35	36
Op	Orthocids, gravelly	2.96	1.9%		V8ls	0	5
On	Onite-Marysland loams	2.23	1.4%		Ils	52	58
HvB	Helmdal-Sves loams, 2 to 6 percent slopes	0.38	0.2%		Ile	83	82
Bo	Bonap silt loam	0.27	0.2%		Ivw	57	54
Weighted Average						72.8	68.1

\*c: Using Capabilities Class Dominant Condition Aggregation Method

Soils data provided by USDA and NRCS

**TRACT 1**

### Topography Map



# TRACT 1





**Common Land Unit**  Tract Boundary  
 Non-Cropland  
 Cropland  
 PLSS

**Wetland Determination**  
 ● Restricted Use  
 ▽ Limited Restrictions  
 □ Exempt from Conservation Compliance Provisions

# TRACT 1

**2021 Program Year**

Map Created April 05, 2021

**Farm 2247**

**12-128N-49LW**

United States Department of Agriculture (USDA) Farm Service Agency (FSA) maps are for FSA Program administration only. This map does not represent a legal survey or reflect actual ownership; rather it depicts the information provided directly from the producer and/or National Agricultural Imagery Program (NAIP) Imagery. The producer accepts the data 'as is' and assumes all risks associated with its use. USDA-FSA assumes no responsibility for actual or consequential damage incurred as a result of any user's reliance on this data outside FSA Programs. Wetland identifiers do not represent the size, shape, or specific determination of the area. Refer to your original determination (CPA-026 and attached maps) for exact boundaries and determinations or contact USDA Natural Resources Conservation Service (NRCS).

12-128-49  
F2247  
T 4058



TRACT 1