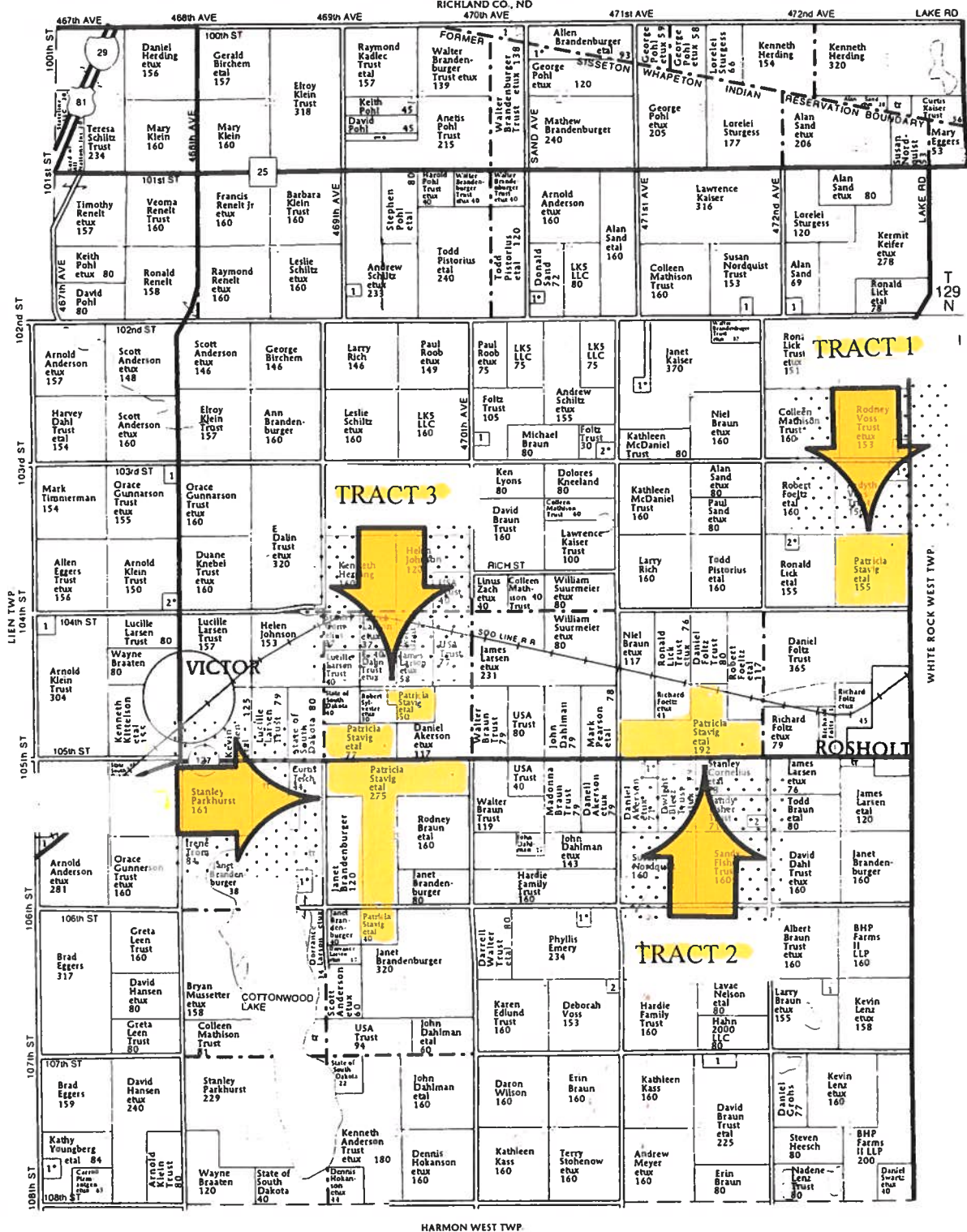


T-128-129-N

# VICTOR PLAT

R-49-W



### VICTOR TOWNSHIP

#### SECTION 1N

- 1. Brandenburger, Allen et al 9

#### SECTION 1S

- 1. Zach, Daniel et al 7

#### SECTION 2N

- 1. Brandenburger, Walter 32

#### SECTION 2S

- 1. Parkhurst, Steve et al 11

#### SECTION 3

- 1. J&A Farms LLC 15
- 2. Foltz, Raymond et al 10

#### SECTION 7

- 1. Dakota Line Lodge LLC 5

#### SECTION 12

- 1. Sand, Alan et al 10

#### SECTION 18

- 2. Hanson, Harlan et al 5

#### SECTION 19

- 1. Shelstad, Duane 10

#### SECTION 20

- 1. Knudsen, John 13

#### SECTION 21

- 1. Guy, Jasper et al 10

#### SECTION 23

- 1. Beyl, Ben et al 7

#### SECTION 25

- 2. Roers Trust, Georgine 9

#### SECTION 25S

- 1. Skalicky, Jeffery 5

#### SECTION 27S

- 1. Brandell, David et al 6

#### SECTION 28N

- 2. Anderson, Mitchell 7

#### SECTION 28N

- 1. Pohl, Stephen et al 10

#### SECTION 31S

- 1. Hansen, Tom et al 11

#### SECTION 33N

- 1. Schiltz Trust, Teresa 7

#### SECTION 34N

- 1. Schiltz, Steven et al 8

#### SECTION 35N

- 1. OHara, Mary 7

#### SECTION 35S

- 1. Popp, Jason 15

#### SECTION 36N

- 1. Haire, Steve 11