

Aerial Map



map center: 45° 52' 13.64, 97° 16' 49.13
scale: 9666

15-128N-53W
Marshall County
South Dakota

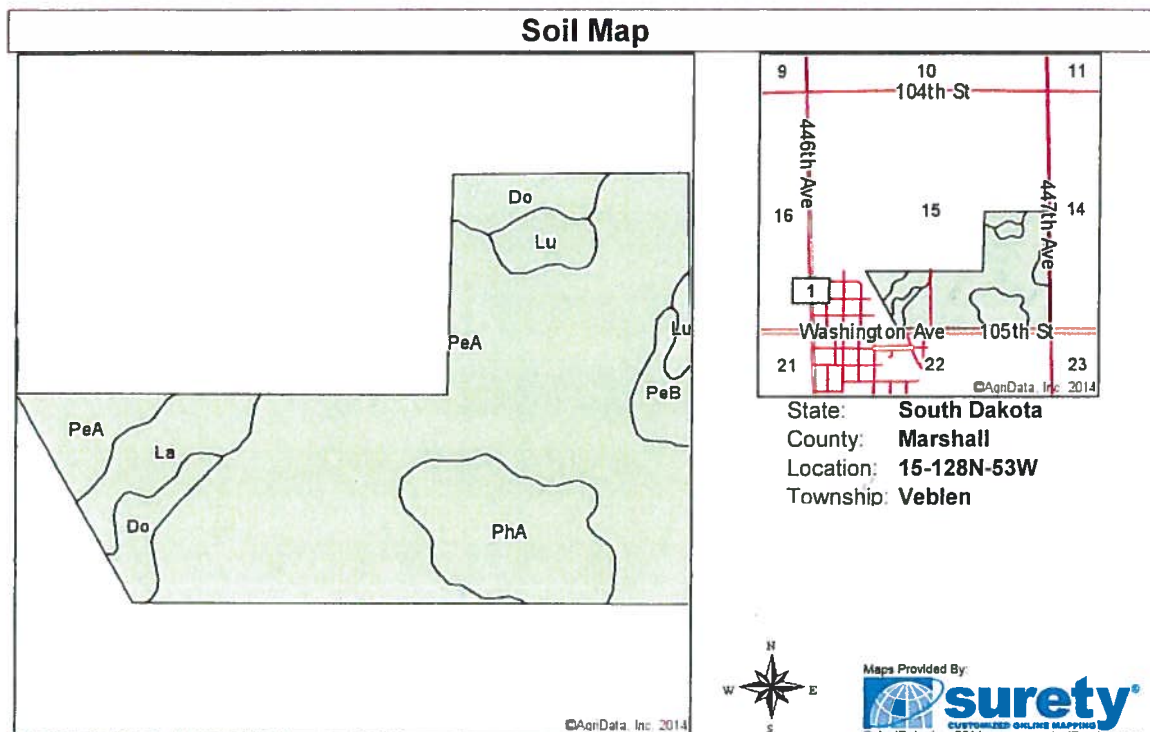


9/24/2014

Maps Provided By:

© AgriData, Inc 2014 www.AgrDataInc.com

Field borders provided by Farm Service Agency as of 5/21/2008. Aerial photography provided by Aerial Photography Field Office.

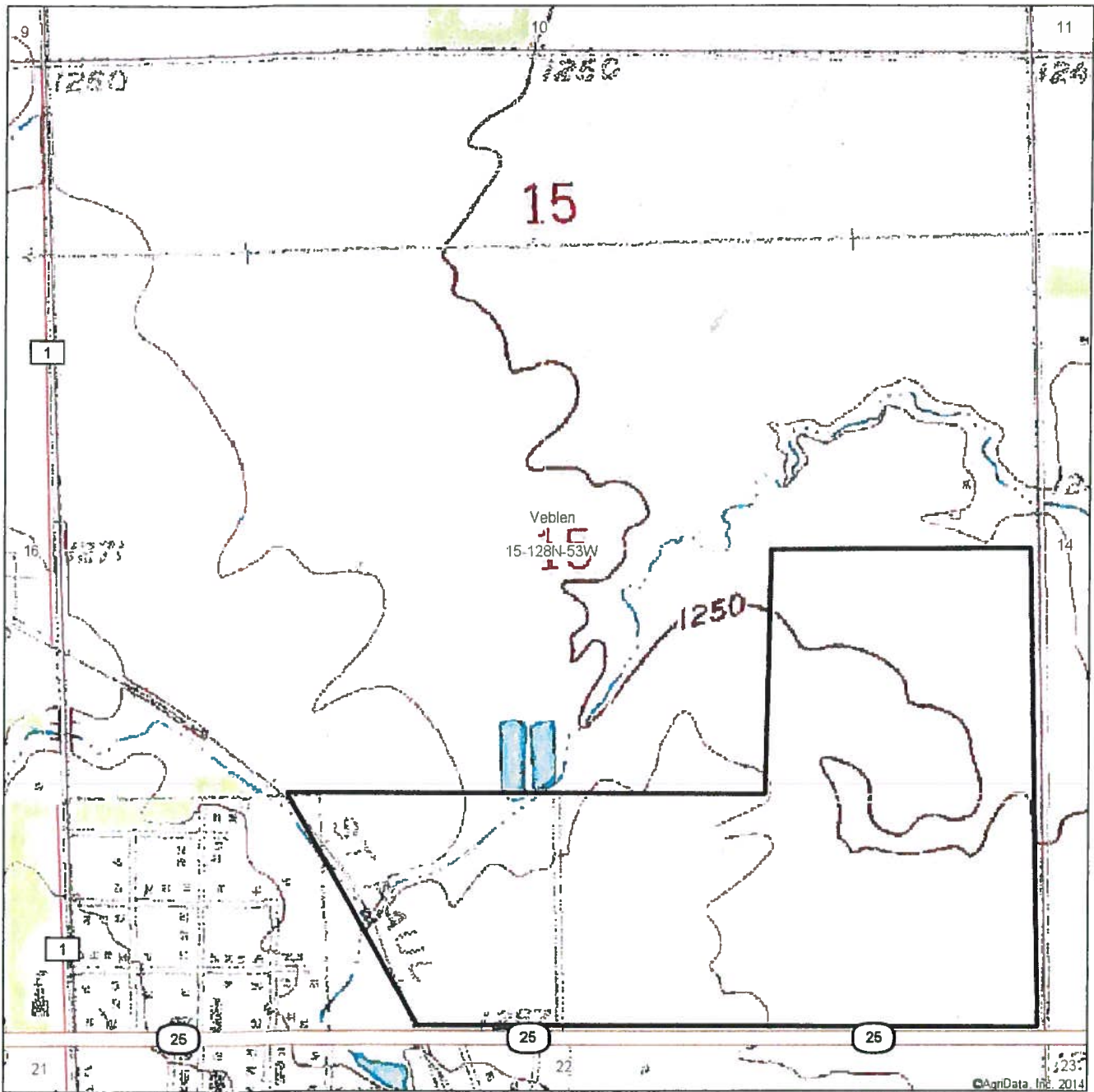


Area Symbol: SD091, Soil Area Version: 14

Code	Soil Description	Acres	Percent of field	Non-Irr Class	Productivity Index	Corn	Soybeans
PeA	Peever clay loam, 0 to 2 percent slopes	102.47	67.7%	IIs	77	65	25
PhA	Peever-Hamerly complex, 0 to 2 percent slopes	19.18	12.7%	IIs	74	65	23
Do	Castlewood silty clay	10.51	6.9%	IVw	60	50	19
La	Lamoure silty clay loam	9.30	6.1%	IIIw	64	63	20
Lu	Ludden silty clay	5.64	3.7%	IVw	57	46	16
PeB	Peever clay loam, 2 to 6 percent slopes	4.20	2.8%	IIIe	70	57	22
Weighted Average					73.7	62.9	23.6

Field borders provided by Farm Service Agency as of 5/21/2008. Aerial photography provided by Aerial Photography Field Office.

Topography Map



map center: 45° 52' 13.64, 97° 16' 49.13

scale: 9666

15-128N-53W
Marshall County
South Dakota



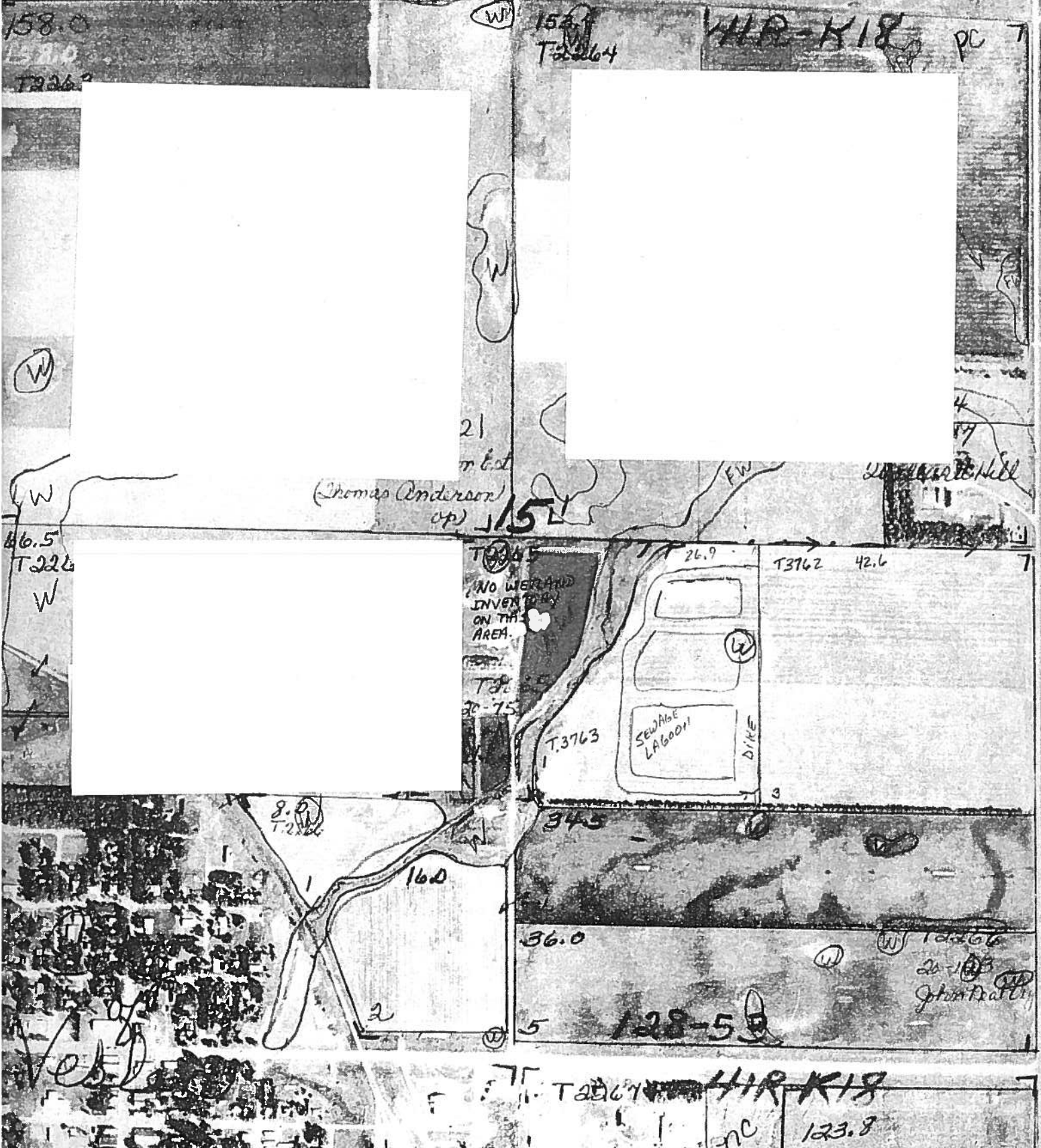
9/24/2014

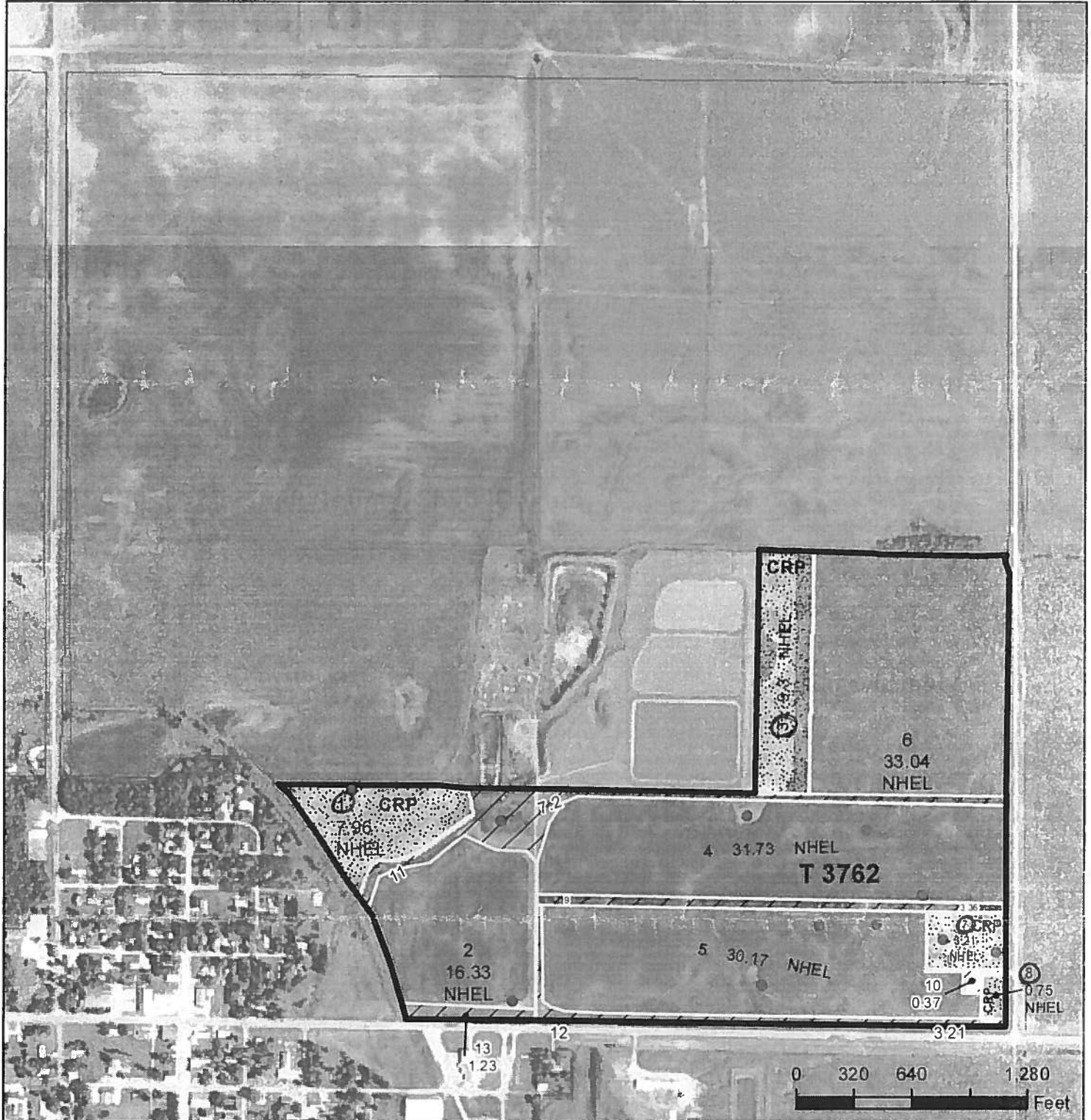
Maps Provided By:

© AgriData, Inc 2014 www.AgriDataInc.com

Field borders provided by Farm Service Agency as of 5/21/2008. Aerial photography provided by Aerial Photography Field Office.

NOT TO SCALE





- Common Land Unit**
 Cropland / / Non-cropland
- Conservation Reserve Program**
 [Stippled pattern]
- Wetland Determination Identifiers**
 ● Restricted Use
 ▽ Limited Restrictions
 [Grey square] Exempt from Conservation Compliance Provisions
- Compliance Provisions**
 [Thick black line] Tract Boundary [Thin black line] Section Line



2012 Ortho-Photography - not to scale

2014 Program Year

Map Created January 09, 2014

Farm 2452

15 -128 -53L

United States Department of Agriculture (USDA) Farm Service Agency (FSA) maps are for FSA Program administration only. This map does not represent a legal survey or reflect actual ownership, rather it depicts the information provided directly from the producer and/or National Agricultural Imagery Program (NAIP) imagery. The producer accepts the data 'as is' and assumes all risks associated with its use. USDA-FSA assumes no responsibility for actual or consequential damage incurred as a result of any user's reliance on this data outside FSA Programs. Wetland identifiers do not represent the size, shape, or specific determination of the area. Refer to your original determination (CPA-026 and attached maps) for exact boundaries and determinations or contact USDA Natural Resources Conservation Service (NRCS).