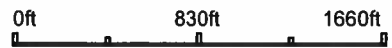


Aerial Map



map center: 45° 27' 49.21, -96° 49' 55.01



Maps Provided By:
surety
CUSTOMIZED ONLINE MAPPING
© AgriData, Inc. 2018 www.AgriDataInc.com

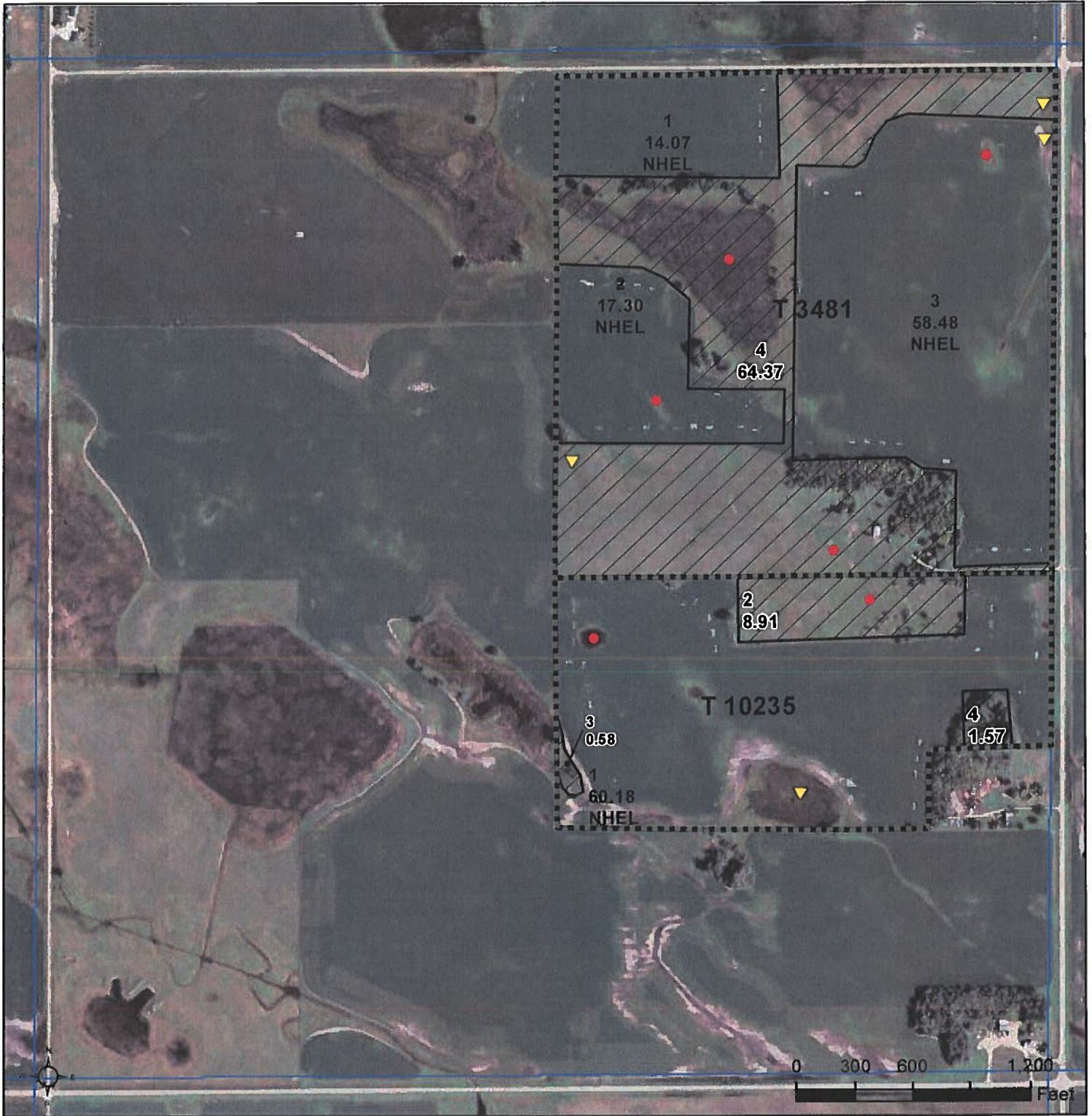
17-123N-49W
Roberts County
South Dakota



9/11/2018

Field borders provided by Farm Service Agency as of 5/21/2008.

TRACT 2



Common Land Unit

- Non-Cropland
- Cropland
- Tract Boundary
- PLSS

Wetland Determination Identifiers

- Restricted Use
- Limited Restrictions
- Exempt from Conservation Compliance Provisions

TRACT 2

2018 Program Year

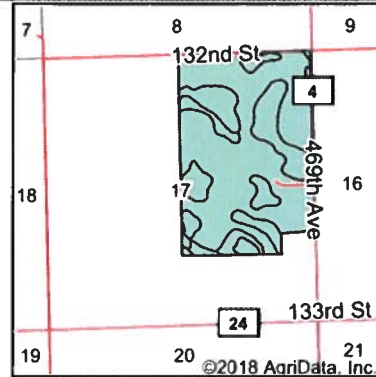
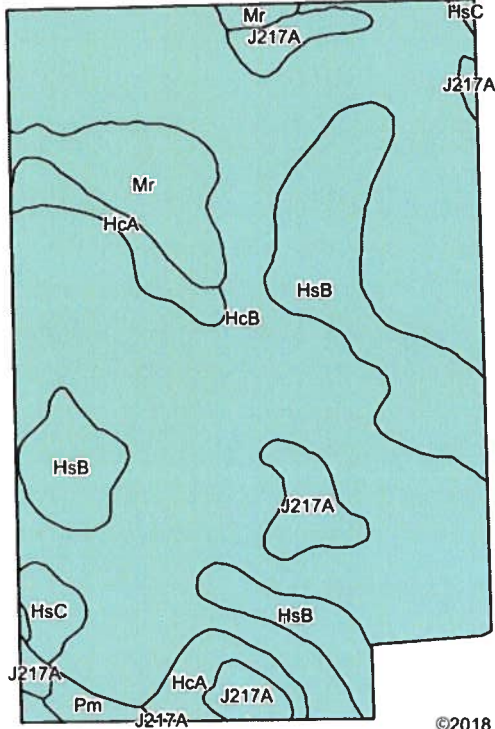
Map Created May 03, 2018

Farm 9638

17-123N-49W

United States Department of Agriculture (USDA) Farm Service Agency (FSA) maps are for FSA Program administration only. This map does not represent a legal survey or reflect actual ownership; rather it depicts the information provided directly from the producer and/or National Agricultural Imagery Program (NAIP) imagery. The producer accepts the data 'as is' and assumes all risks associated with its use. USDA-FSA assumes no responsibility for actual or consequential damage incurred as a result of any user's reliance on this data outside FSA Programs. Wetland identifiers do not represent the size, shape, or specific determination of the area. Refer to your original determination (CPA-026 and attached maps) for exact boundaries and determinations or contact USDA Natural Resources Conservation Service (NRCS).

Soils Map



State: **South Dakota**
 County: **Roberts**
 Location: **17-123N-49W**
 Township: **Lake**



Soils data provided by USDA and NRCS.

Area Symbol: SD109, Soil Area Version: 18

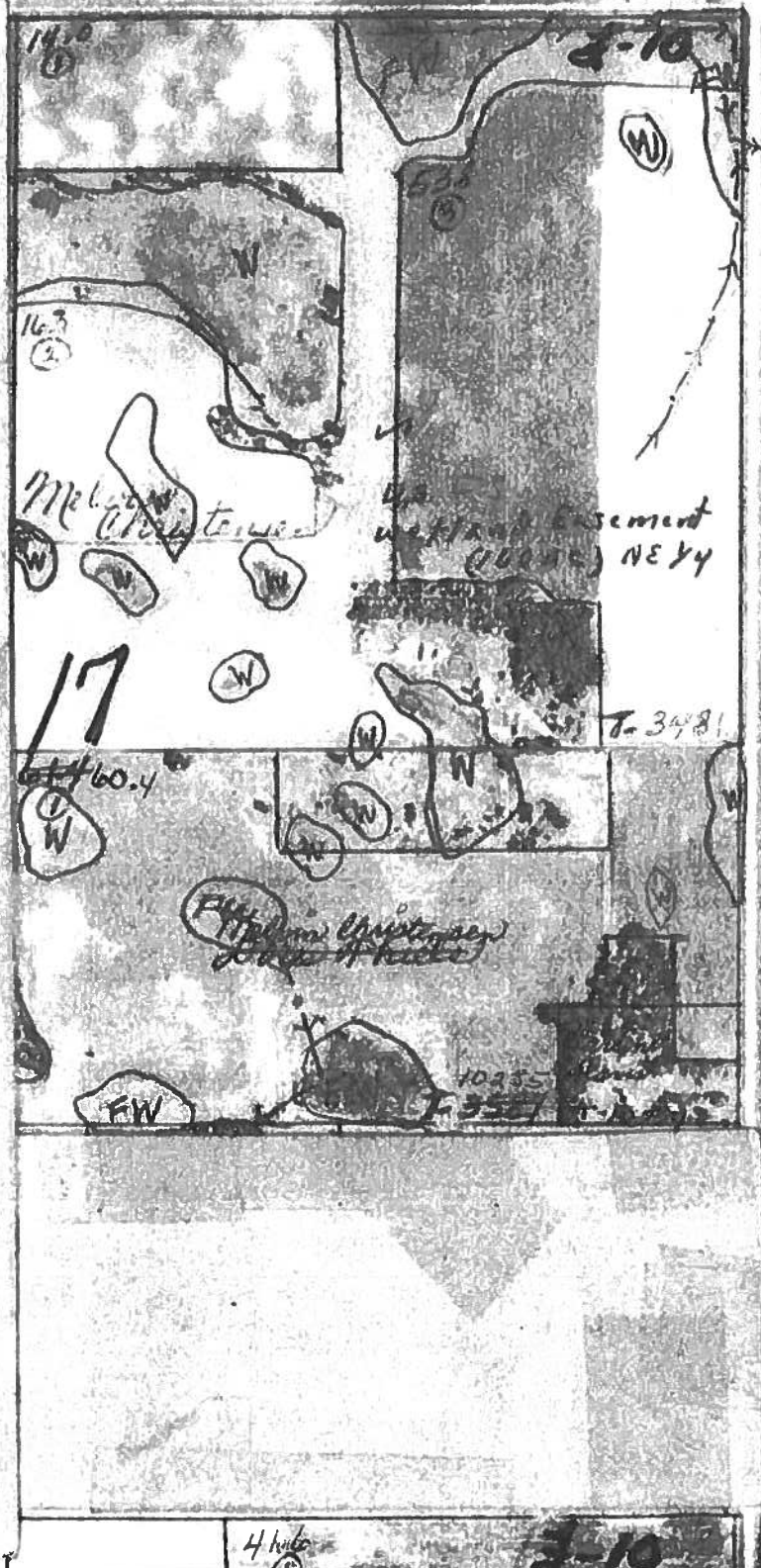
Code	Soil Description	Acres	Percent of field	Non-Irr Class *c	Productivity Index	Corn	Soybeans	NCCPI Soybeans
HcB	Hamerly-Vallers loams, 2 to 4 percent slopes	152.12	66.7%	IIs	64	64	21	57
HsB	Esmond-Heimdal-Sisseton complex, 2 to 6 percent slopes	34.63	15.2%	IIle	81			52
Mr	Southam silty clay loam, 0 to 1 percent slopes	13.49	5.9%	VIIIw	10			2
J217A	Parnell silty clay loam, occasionally ponded, 0 to 1 percent slopes	12.37	5.4%	IIIw	71			59
HcA	Hamerly-Vallers loams, 0 to 2 percent slopes	10.16	4.5%	IIs	71	70	22	57
HsC	Esmond-Sisseton-Heimdal, complex, 2 to 12 percent slopes, moderately eroded	3.37	1.5%	IVe	58			43
Pm	Playmoor silty clay loam	1.95	0.9%	IVw	35	29	8	20
Weighted Average					63.7	46	15.1	52.6

*c: Using Capabilities Class Dominant Condition Aggregation Method

Soils data provided by USDA and NRCS.

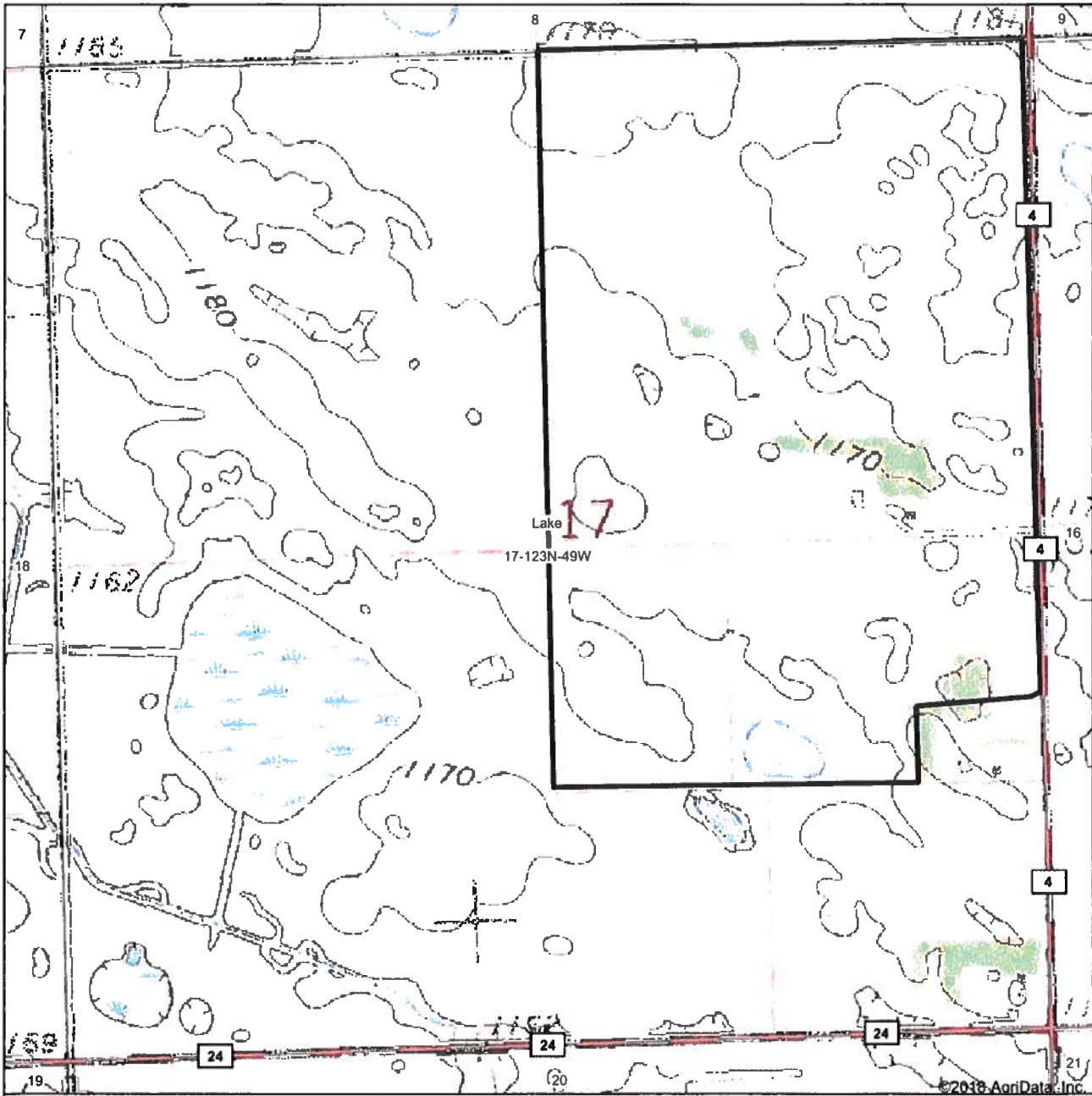
TRACT 2

NOT TO SCALE

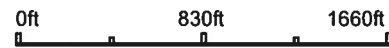


TRACT 2

Topography Map



map center: 45° 27' 49.26, -96° 49' 55.01



17-123N-49W
Roberts County
South Dakota



9/11/2018

Maps Provided By
surety
CUSTOMIZED ONLINE MAPPING
© AgriData, Inc. 2018 www.AgrDataInc.com

Field borders provided by Farm Service Agency as of 5/21/2008.

TRACT 2