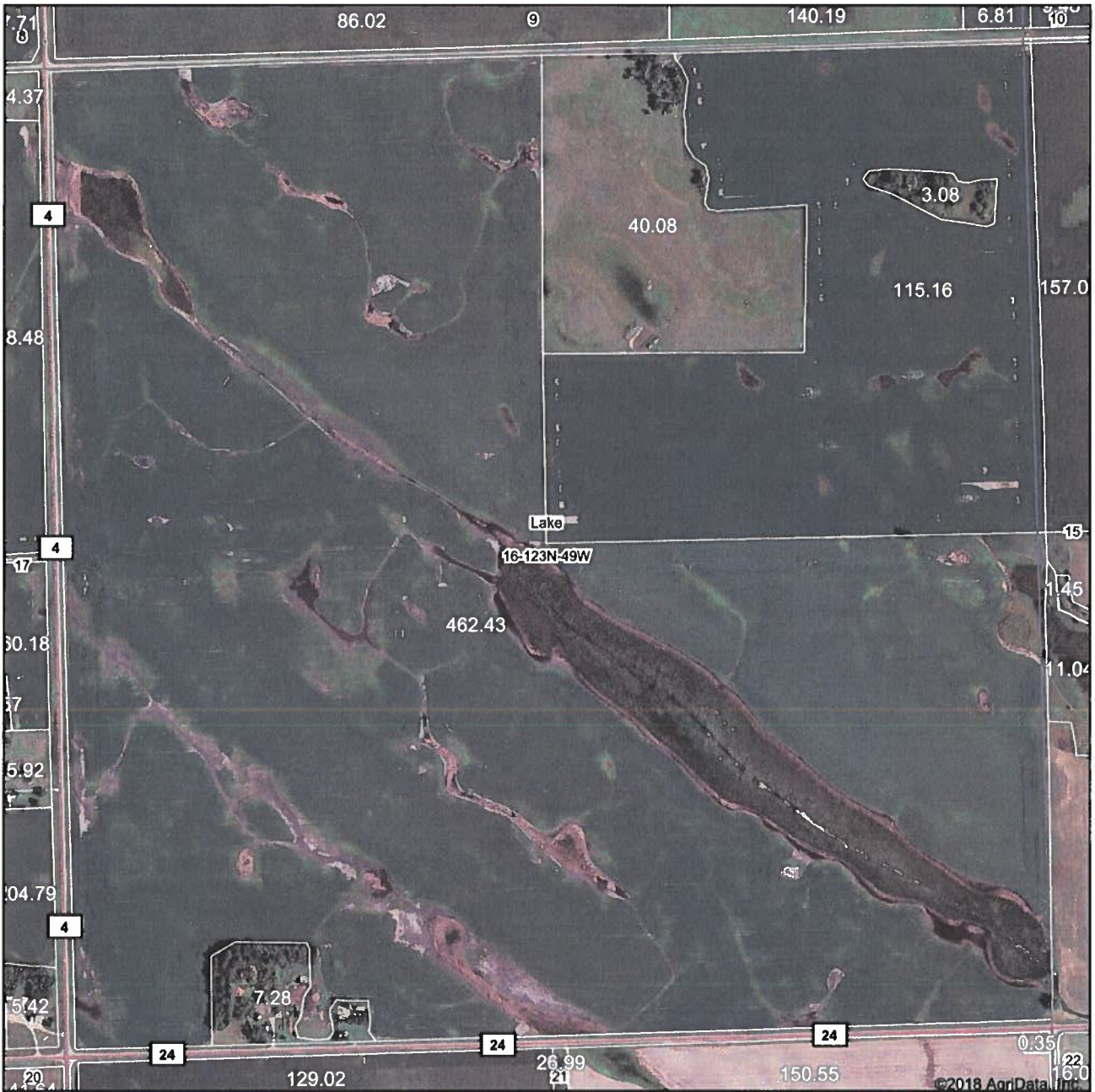
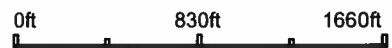


Aerial Map



map center: 45° 27' 49.52, -96° 48' 41.46



Maps Provided By:
 **surety**
CUSTOMIZED ONLINE MAPPING
© AgriData, Inc. 2018 www.AgriDataInc.com

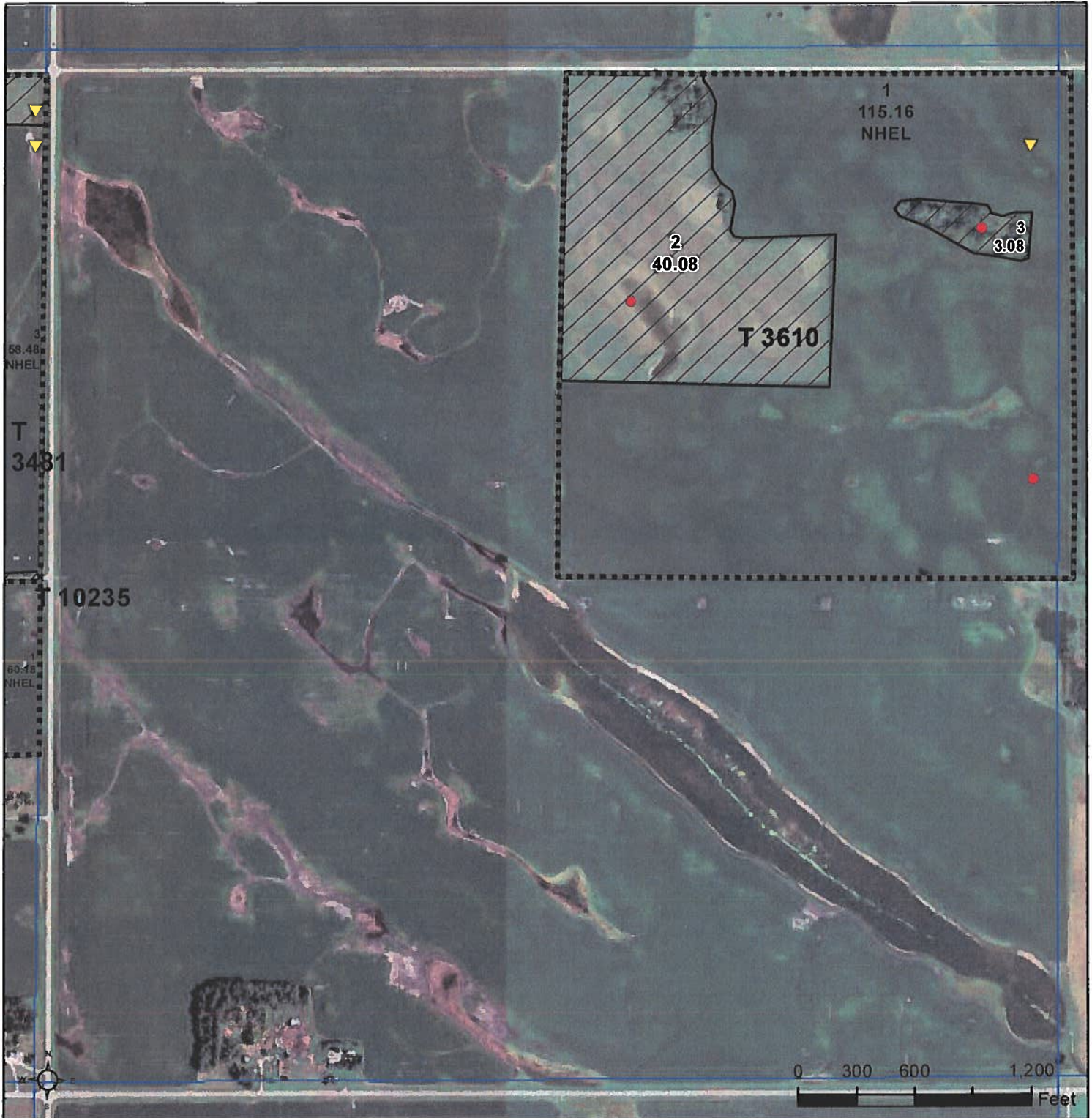
16-123N-49W
Roberts County
South Dakota



9/11/2018

Field borders provided by Farm Service Agency as of 5/21/2008.



TRACT 1



Common Land Unit

-  Non-Cropland
-  Cropland
-  Tract Boundary
-  PLSS

Wetland Determination Identifiers

-  Restricted Use
-  Limited Restrictions
-  Exempt from Conservation Compliance Provisions

TRACT 1

2018 Program Year

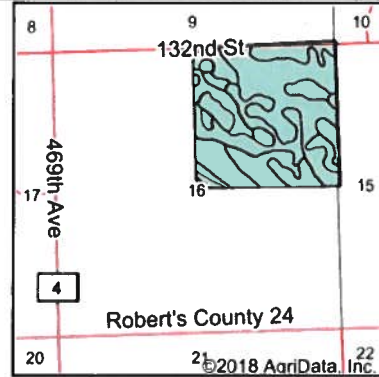
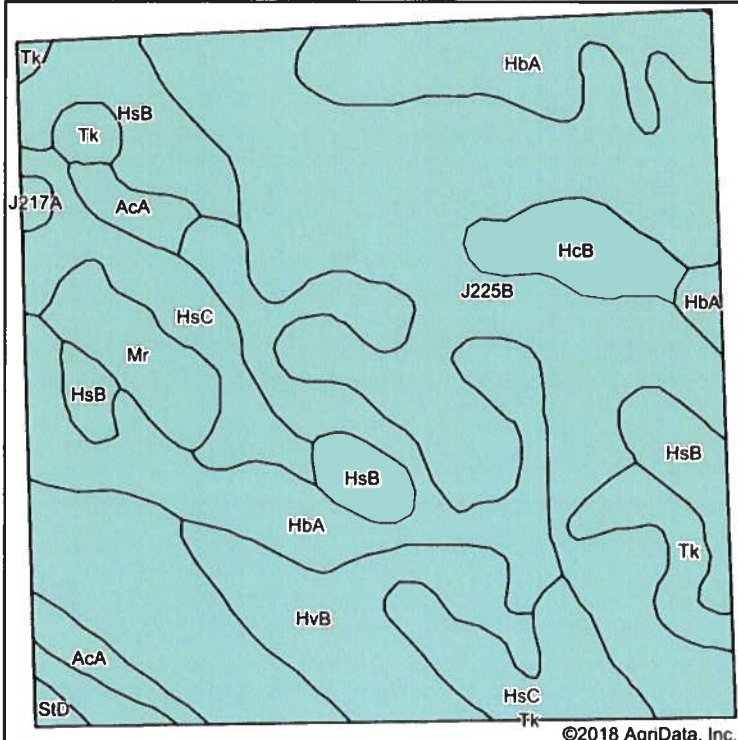
Map Created May 03, 2018

Farm 9638

16-123N-49W

United States Department of Agriculture (USDA) Farm Service Agency (FSA) maps are for FSA Program administration only. This map does not represent a legal survey or reflect actual ownership; rather it depicts the information provided directly from the producer and/or National Agricultural Imagery Program (NAIP) imagery. The producer accepts the data 'as is' and assumes all risks associated with its use. USDA-FSA assumes no responsibility for actual or consequential damage incurred as a result of any user's reliance on this data outside FSA Programs. Wetland identifiers do not represent the size, shape, or specific determination of the area. Refer to your original determination (CPA-026 and attached maps) for exact boundaries and determinations or contact USDA Natural Resources Conservation Service (NRCS).

Soils Map



State: **South Dakota**
 County: **Roberts**
 Location: **16-123N-49W**
 Township: **Lake**

Maps Provided By

 CUSTOMIZED ONLINE MAPPING
 © AgriData, Inc. 2018 www.AgrIDataInc.com



Soils data provided by USDA and NRCS.

©2018 AgriData, Inc.

Area Symbol: SD109, Soil Area Version: 18

Code	Soil Description	Acres	Percent of field	Non-Irr Class *c	Productivity Index	Corn	Soybeans	NCCPI Soybeans
J225B	Forman-Aastad complex, 1 to 4 percent slopes	66.99	41.5%	Ile	88			67
HbA	Hamerly-Tonka complex, 0 to 3 percent slopes	33.68	20.9%	Ils	69	70	23	42
HsC	Esmond-Sisseton-Heimdal, complex, 2 to 12 percent slopes, moderately eroded	14.77	9.1%	IVe	58			43
HsB	Esmond-Heimdal-Sisseton complex, 2 to 6 percent slopes	13.90	8.6%	IIIe	81			52
HvB	Heimdal-Svea loams, 2 to 6 percent slopes	11.94	7.4%	Ile	83	82	31	54
Tk	Tonka silty clay loam, 0 to 1 percent slopes	5.25	3.3%	IVw	58			11
Mr	Southam silty clay loam, 0 to 1 percent slopes	5.06	3.1%	VIIIw	10			2
HcB	Hamerly-Vallers loams, 2 to 4 percent slopes	4.87	3.0%	Ils	64	64	21	57
AcA	Aastad clay loam, 1 to 3 percent slopes	4.04	2.5%	Ilc	94			72
J217A	Parnell silty clay loam, occasionally ponded, 0 to 1 percent slopes	0.50	0.3%	IIIw	71			59
StD	Sisseton-Esmond-Heimdal, complex, 6 to 20 percent slopes, moderately eroded	0.50	0.3%	IVe	43			39
Weighted Average					76.1	22.6	7.7	53.2

*c: Using Capabilities Class Dominant Condition Aggregation Method

Soils data provided by USDA and NRCS

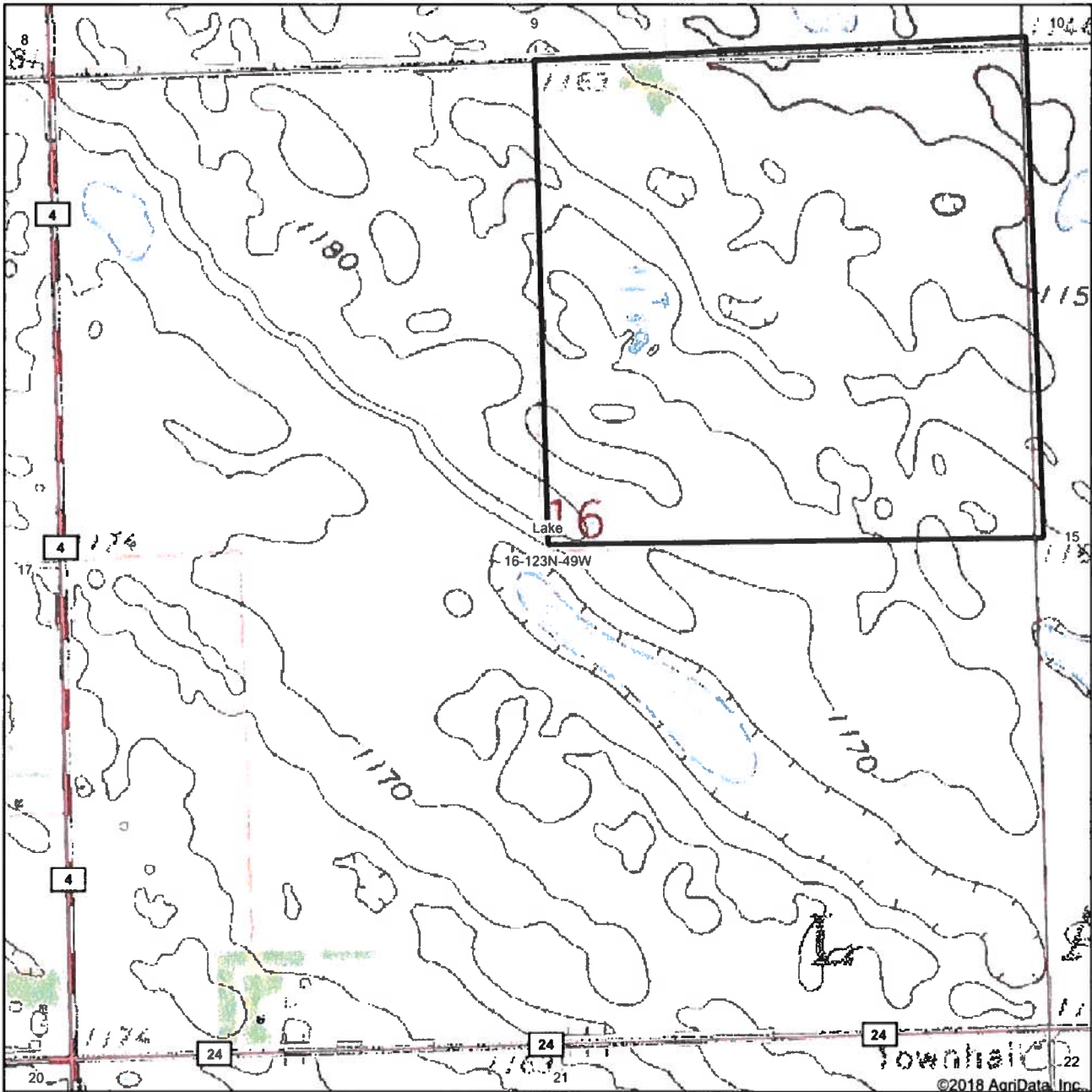
TRACT 1

NOT TO SCALE

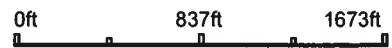


TRACT 1

Topography Map



map center: 45° 27' 49.79, -96° 48' 41.46



Maps Provided By

CUSTOMIZED ONLINE MAPPING
© AgriData, Inc. 2018 www.AgrIDataInc.com

16-123N-49W
Roberts County
South Dakota



9/11/2018

Field borders provided by Farm Service Agency as of 5/21/2008.

TRACT 1