

Aerial Map



map center: 45° 46' 7.16, 97° 8' 3.01
scale: 10344

23-127N-52W
Roberts County
South Dakota



7/12/2012

Maps provided by:



©AgriData, Inc. 2012
www.AgriDataInc.com

Field borders provided by Farm Service Agency as of 5/21/2008. Aerial photography provided by Aerial Photography Field Office.



United States Department of Agriculture
Farm Service Agency

March 28, 2012

PLSS: 23_127N_52W
Farm: 9330

Roberts County
1:8,813 2012 Map



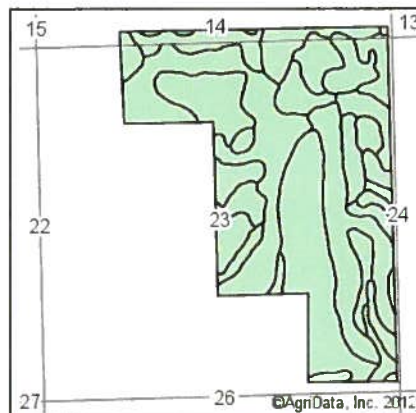
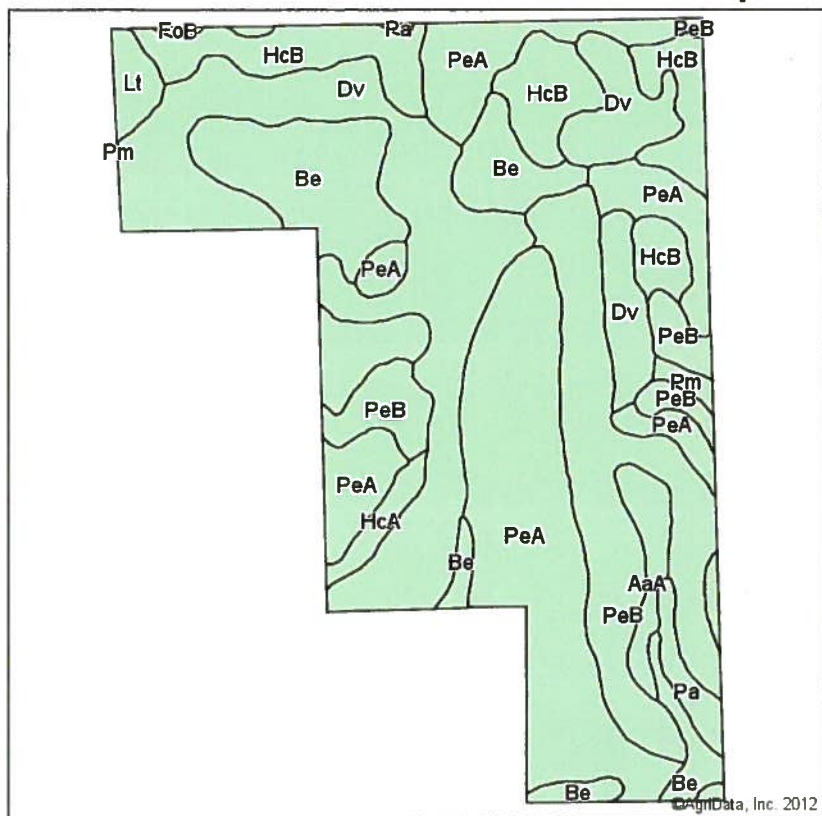
- Wetland Determination Identifiers**
- Restricted Use
 - ▼ Limited Restrictions
 - Exempt from Conservation Compliance Provisions

- Common Land Units
- ▨ Non Cropland

Disclaimer: Wetland identifiers do not represent the size, shape or specific determination of the area. Refer to your original determination (CPA-026 and attached maps) for exact wetland boundaries and determinations, or contact NRCS.

2010 Ortho-Photography - Not to Scale

Soils Map



State: **South Dakota**
 County: **Roberts**
 Location: **23-127N-52W**
 Township: **Bossko**
 Acres: **321.2**
 Date: **7/9/2012**



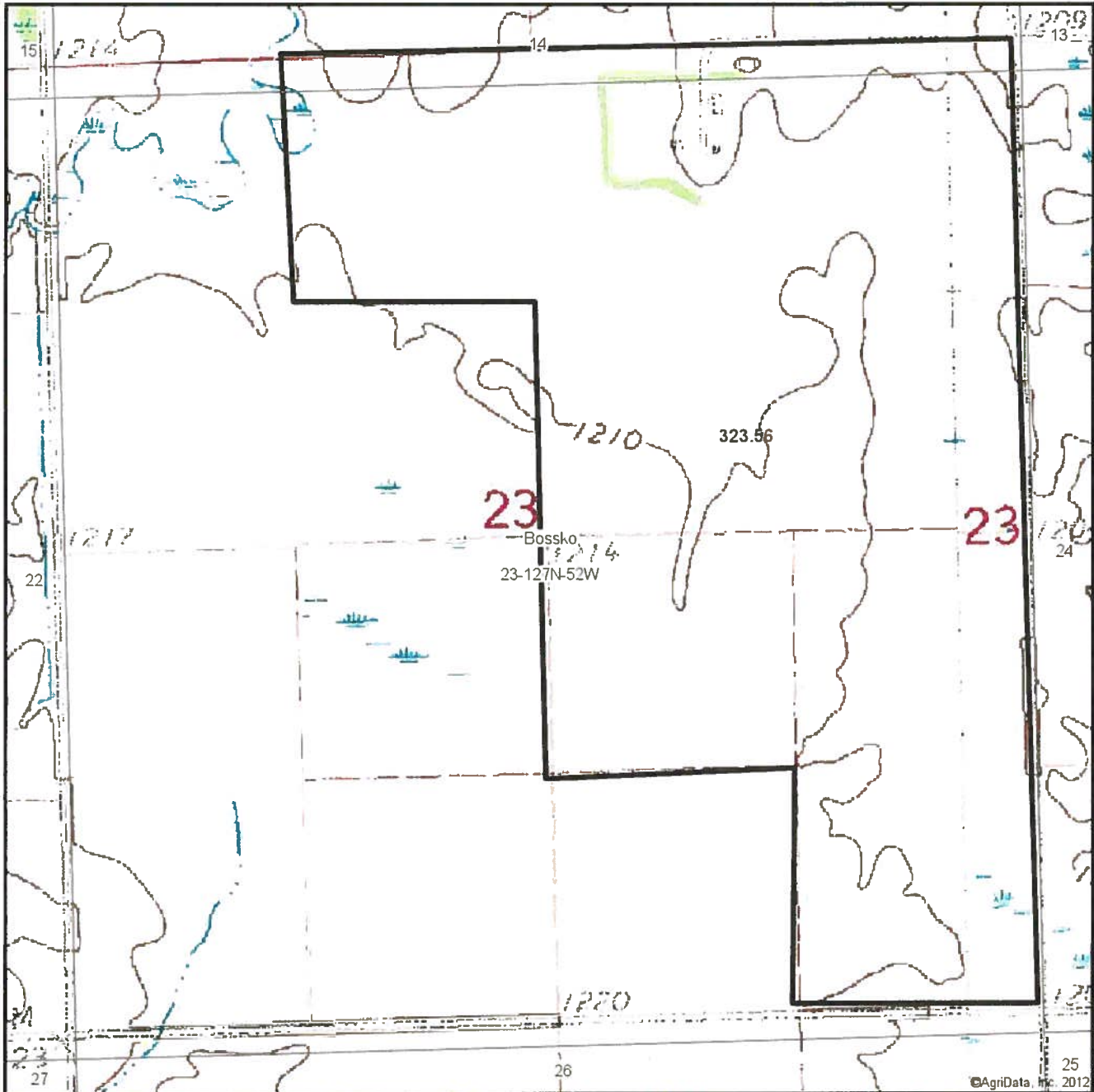
Maps provided by:

 ©AgriData, Inc 2012
 www.AgriDataInc.com

Field borders provided by Farm Service Agency as of 5/21/2008.
 Soils data provided by USDA and NRCS.

Code	Soil Description	Acres	Percent of field	Non-Irr Class	Productivity Index	Corn	Soybeans
PeA	Peever clay loam, 0 to 2 percent slopes	93.7	29.2%	Ils	71	76	28
Dv	Castlewood clay	81	25.2%	IVw	62	59	22
PeB	Peever clay loam, 2 to 6 percent slopes	54.3	16.9%	IIIe	66	67	25
Be	Bearden silty clay loam	37.5	11.7%	Ils	78	80	26
HcB	Hamerly-Vallers loams, 2 to 4 percent slopes	33.8	10.5%	IIw	64	64	21
AaA	Aastad loam, 0 to 2 percent slopes	6.4	2.0%	I	92	92	34
Pa	Parnell silty clay loam	4.5	1.4%	Vw	31	29	11
Lt	Lamoure silty clay loam, channeled	4.1	1.3%	VIw	35	35	11
HcA	Hamerly-Vallers loams, 0 to 2 percent slopes	3.7	1.1%	IIw	71	70	22
Pm	Playmoor silty clay loam	1.5	0.5%	IVw	35	29	8
FoB	Forman-Aastad loams, 2 to 6 percent slopes	0.7	0.2%	Ile	82	79	30
Weighted Average					67.2	68.2	24.5

Topography Map



map center: 45° 46' 7.16, 97° 8' 3.01
 scale: 10344

23-127N-52W
Roberts County
South Dakota



7/12/2012

Maps provided by:



©AgriData, Inc. 2012
 www.AgriDataInc.com

Field borders provided by Farm Service Agency as of 5/21/2008. Aerial photography provided by Aerial Photography Field Office.

NOT TO SCALE

T-2451

T-10188

T-10189 / 27-52

187.400

9-3

23

T-2451