

### Aerial Map



map center: 45° 46' 6.47, 97° 6' 48.54  
scale: 9999

Maps provided by:



©AgriData, Inc. 2012  
www.AgriDataInc.com

**24-127N-52W**  
**Roberts County**  
**South Dakota**



7/12/2012

Field borders provided by Farm Service Agency as of 5/21/2008. Aerial photography provided by Aerial Photography Field Office.



United States Department of Agriculture  
Farm Service Agency

March 28, 2012

PLSS: 24\_127N\_52W  
Farm: 9329

**Roberts County**  
**1:8,908 2012 Map**



**Wetland Determination Identifiers**

- Restricted Use
- ▼ Limited Restrictions
- Exempt from Conservation Compliance Provisions

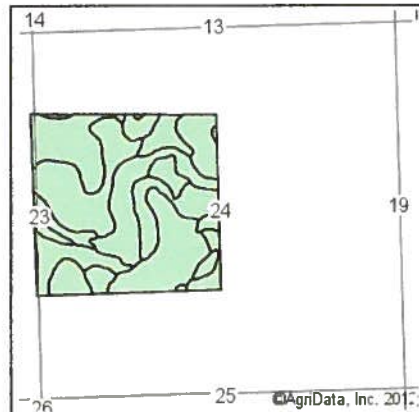
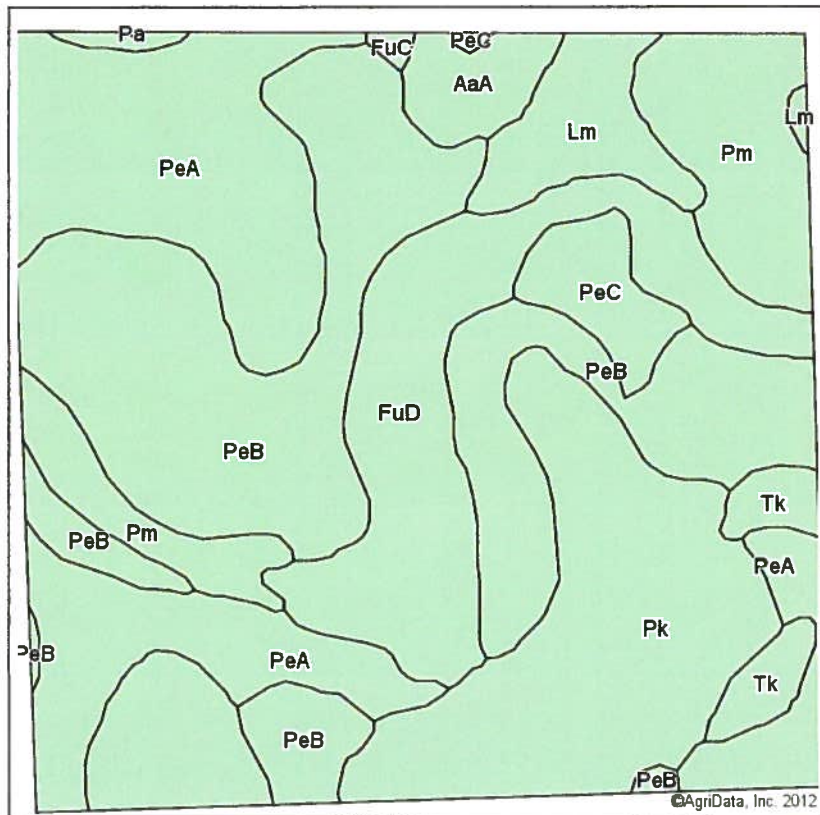
□ Common Land Units

▨ Non Cropland

Disclaimer: Wetland identifiers do not represent the size, shape or specific determination of the area. Refer to your original determination (CPA-026 and attached maps) for exact wetland boundaries and determinations, or contact NRCS.

2010 Ortho-Photography - Not to Scale

### Soils Map



State: **South Dakota**  
 County: **Roberts**  
 Location: **24-127N-52W**  
 Township: **Bossko**  
 Acres: **156.7**  
 Date: **7/9/2012**

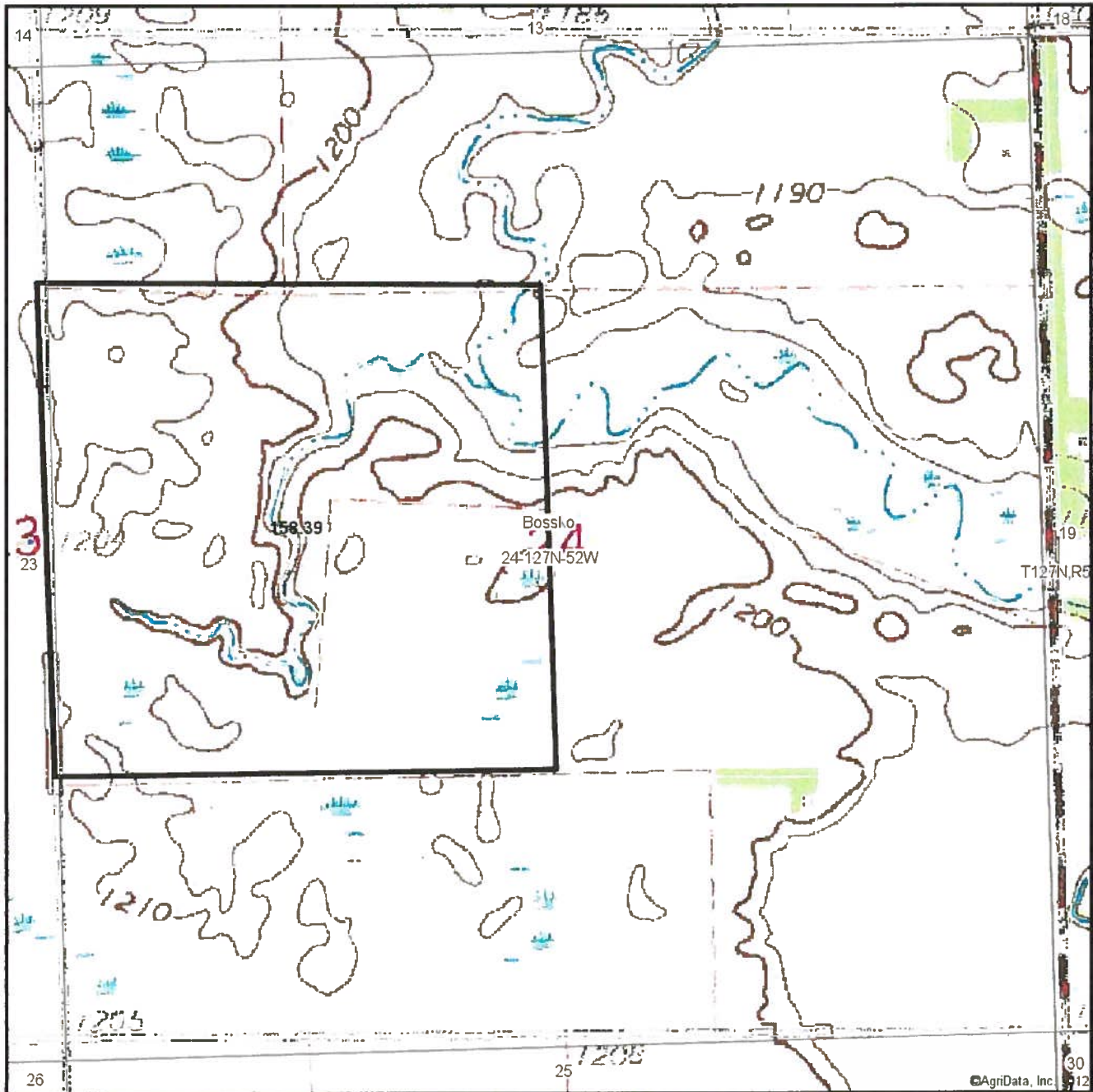


Maps provided by:  
  
 ©AgriData, Inc 2012  
 www.AgriDataInc.com

Field borders provided by Farm Service Agency as of 5/21/2008.  
 Soils data provided by USDA and NRCS.

Code	Soil Description	Acres	Percent of field	Non-Irr Class	Productivity Index	Corn	Soybeans
PeB	Peever clay loam, 2 to 6 percent slopes	44.9	28.7%	IIIe	66	67	25
PeA	Peever clay loam, 0 to 2 percent slopes	32.6	20.8%	IIs	71	76	28
Pk	Peever-Tonka complex	29	18.5%	IIIw	70	70	26
FuD	Forman-Buse loams, 9 to 15 percent slopes, eroded	19.5	12.5%	Ve	49	41	15
Pm	Playmoor silty clay loam	13.2	8.4%	IVw	35	29	8
Lm	Lamoure silty clay loam	6	3.8%	IIIw	69	69	22
PeC	Peever clay loam, 6 to 9 percent slopes	4.1	2.6%	IIIe	56	53	20
AaA	Aastad loam, 0 to 2 percent slopes	3.4	2.2%	I	92	92	34
Tk	Tonka silt loam	3.2	2.0%	IVw	60	56	21
HcB	Hamerly-Vallers loams, 2 to 4 percent slopes	0.5	0.3%	IIw	64	64	21
FuC	Forman-Buse loams, 6 to 9 percent slopes, eroded	0.3	0.2%	IIIe	63	58	21
<b>Weighted Average</b>					<b>63.3</b>	<b>63</b>	<b>23</b>

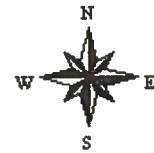
### Topography Map



©AgriData, Inc. 12

map center: 45° 46' 6.47, 97° 6' 48.54  
scale: 9999

**24-127N-52W**  
**Roberts County**  
**South Dakota**



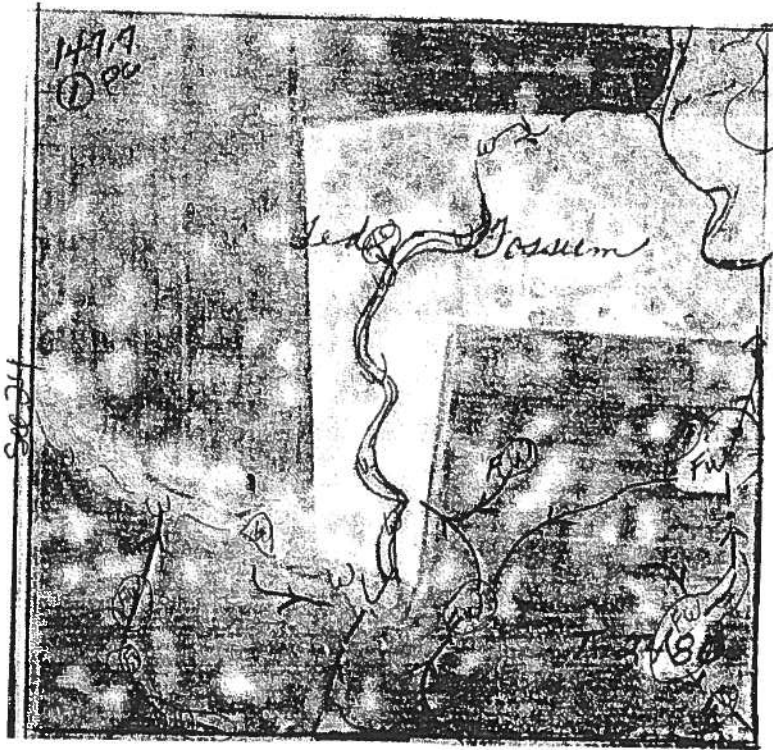
7/12/2012

Maps provided by:



©AgriData, Inc. 2012  
www.AgriDataInc.com

Field borders provided by Farm Service Agency as of 5/21/2008. Aerial photography provided by Aerial Photography Field Office.



### Aerial Map



map center: 45° 46' 56.22, 97° 7' 18.16  
 scale: 9915

**13-127N-52W**  
**Roberts County**  
**South Dakota**



7/12/2012

Maps provided by:



©AgriData, Inc. 2012  
 www.AgriDataInc.com

Field borders provided by Farm Service Agency as of 5/21/2008. Aerial photography provided by Aerial Photography Field Office.



United States Department of Agriculture  
Farm Service Agency

March 28, 2012

PLSS: 13\_127N\_52W  
Farm: 9329

**Roberts County**  
**1:8,854 2012 Map**



- Wetland Determination Identifiers**
- Restricted Use
  - ▼ Limited Restrictions
  - Exempt from Conservation Compliance Provisions

- Common Land Units
- ▨ Non Cropland

Disclaimer: Wetland identifiers do not represent the size, shape or specific determination of the area. Refer to your original determination (CPA-026 and attached maps) for exact wetland boundaries and determinations, or contact NRCS.

2010 Ortho-Photography - Not to Scale



United States Department of Agriculture  
Farm Service Agency

March 28, 2012

PLSS: 14\_127N\_52W  
Farm: 9329

# Roberts County

## 1:8,754 2012 Map



- Wetland Determination Identifiers**
- Restricted Use
  - ▼ Limited Restrictions
  - Exempt from Conservation Compliance Provisions

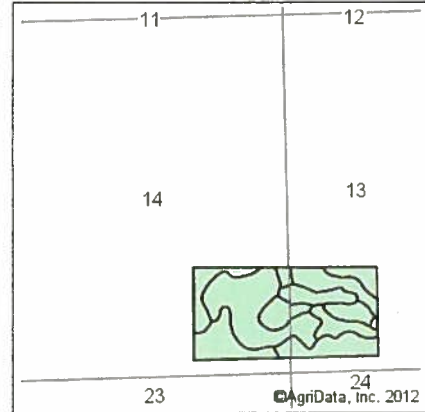
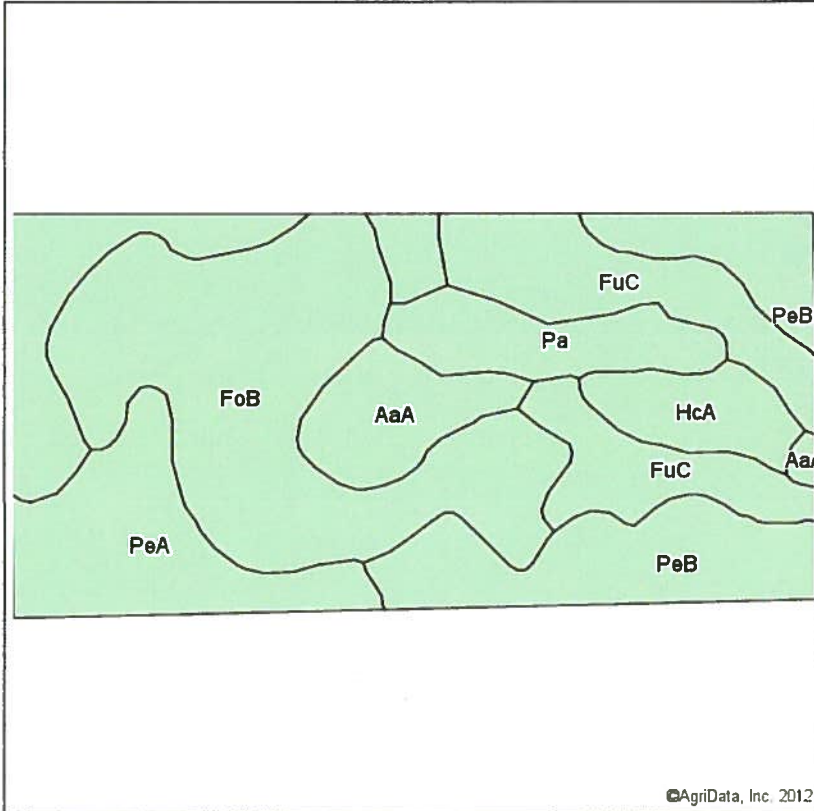
- Common Land Units
- ▨ Non Cropland

Disclaimer: Wetland Identifiers do not represent the size, shape or specific determination of the area. Refer to your original determination (CPA-026 and attached maps) for exact wetland boundaries and determinations, or contact NRCS.

2010 Ortho-Photography - Not to Scale



### Soils Map



State: **South Dakota**  
 County: **Roberts**  
 Location: **14-127N-52W**  
 Township: **Bossko**  
 Acres: **79.5**  
 Date: **7/9/2012**

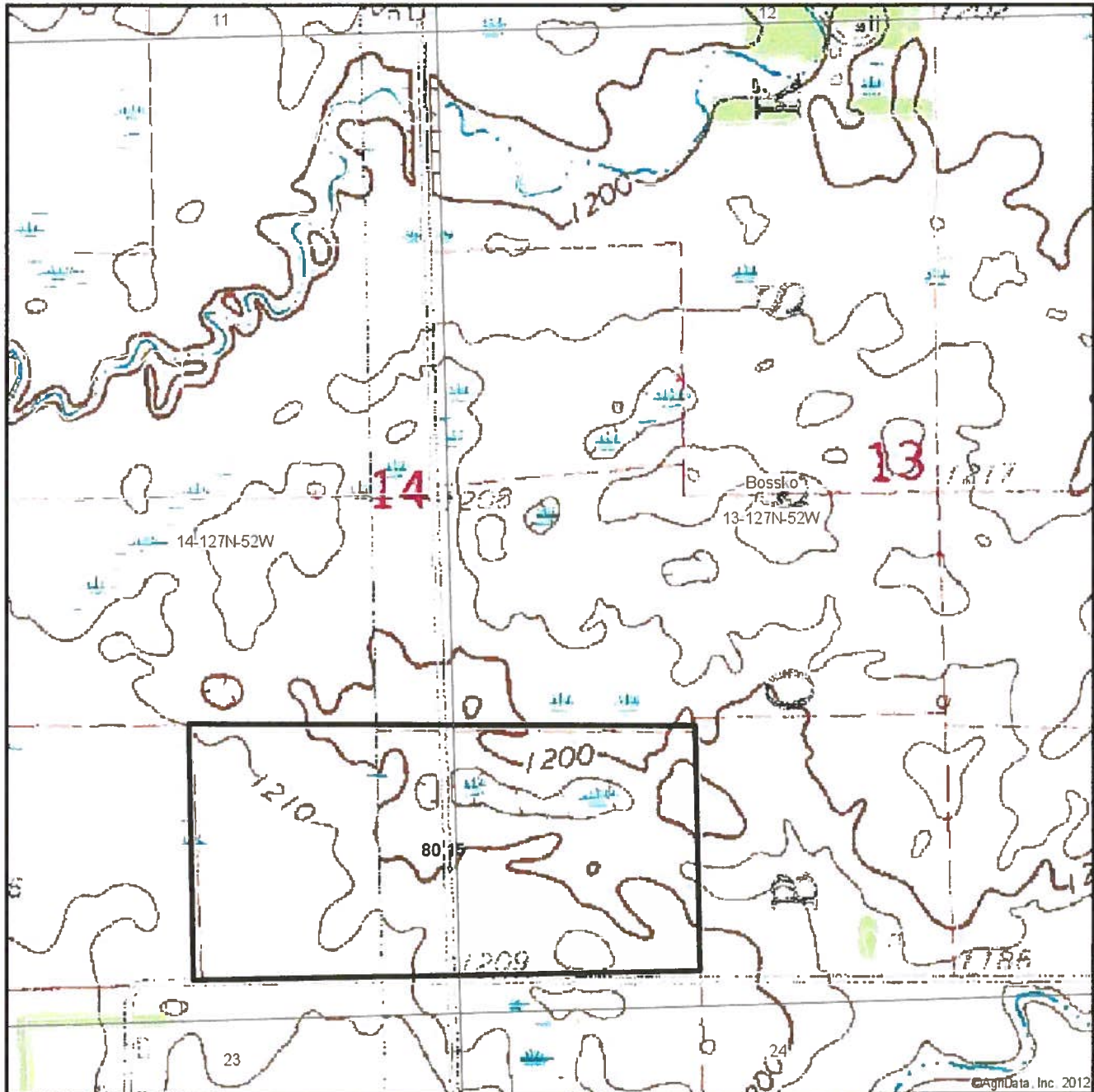


Maps provided by:  
  
 ©AgriData, Inc 2012  
 www.AgriDataInc.com

Field borders provided by Farm Service Agency as of 5/21/2008.  
 Soils data provided by USDA and NRCS.

Code	Soil Description	Acres	Percent of field	Non-Irr Class	Productivity Index	Corn	Soybeans
FoB	Forman-Aastad loams, 2 to 6 percent slopes	23.7	29.8%	Ile	82	79	30
PeB	Peever clay loam, 2 to 6 percent slopes	19.9	25.0%	IIle	66	67	25
FuC	Forman-Buse loams, 6 to 9 percent slopes, eroded	12.2	15.3%	IIIle	63	58	21
PeA	Peever clay loam, 0 to 2 percent slopes	9.5	11.9%	IIs	71	76	28
Pa	Parnell silty clay loam	5.3	6.6%	Vw	31	29	11
AaA	Aastad loam, 0 to 2 percent slopes	5.1	6.5%	I	92	92	34
HcA	Hamerly-Vallers loams, 0 to 2 percent slopes	3.8	4.8%	IIw	71	70	22
<b>Weighted Average</b>					<b>70.5</b>	<b>69.5</b>	<b>25.7</b>

### Topography Map



©AgriData, Inc. 2012

map center: 45° 46' 56.22, 97° 7' 18.16  
scale: 9915

Maps provided by:  
  
CUSTOMIZED ONLINE MAPPING  
©AgriData, Inc. 2012  
www.AgriDataInc.com

**13-127N-52W**  
**Roberts County**  
**South Dakota**



Field borders provided by Farm Service Agency as of 5/21/2008. Aerial photography provided by Aerial Photography Field Office.

