



United States
Department of
Agriculture

Marshall County, South Dakota



Common Land Unit

- Tract Boundary
- Non-Cropland
- Cropland
- PLSS

Wetland Determination Identifiers

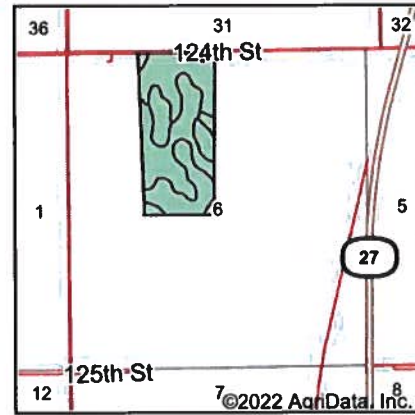
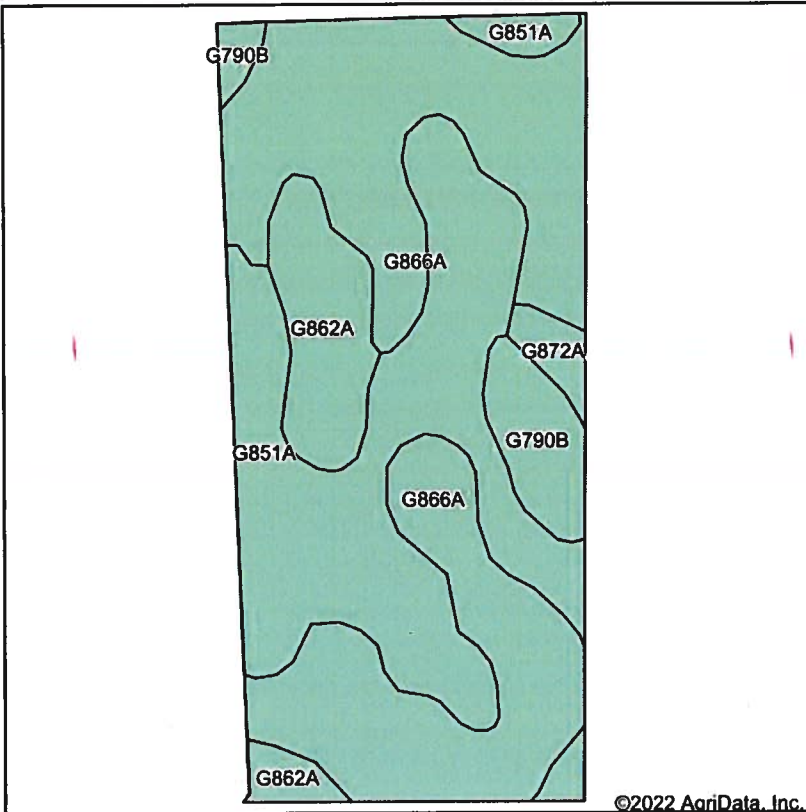
- Restricted Use
- Limited Restrictions
- Exempt from Conservation Compliance Provisions

2022 Program Year
Map Created March 17, 2022
Farm 5101

6-124N-58W-Day

United States Department of Agriculture (USDA) Farm Service Agency (FSA) maps are for FSA Program administration only. This map does not represent a legal survey or reflect actual ownership; rather it depicts the information provided directly from the producer and/or National Agricultural Imagery Program (NAIP) imagery. The producer accepts the data 'as is' and assumes all risks associated with its use. USDA-FSA assumes no responsibility for actual or consequential damage incurred as a result of any user's reliance on this data outside FSA Programs. Wetland identifiers do not represent the size, shape, or specific determination of the area. Refer to your original determination (CPA-026 and attached maps) for exact boundaries and determinations or contact USDA Natural Resources Conservation Service (NRCS).

Soils Map



State: **South Dakota**
 County: **Day**
 Location: **6-124N-58W**
 Township: **Homer**

Maps Provided By



Soils data provided by USDA and NRCS.

©2022 AgriData, Inc.

Area Symbol: SD037, Soil Area Version: 27

Code	Soil Description	Acres	Percent of field	Non-Irr Class *c	Productivity Index	Corn Bu	Soybeans Bu	*n NCCPI Soybeans
G866A	Harmony-Aberdeen silty clay loams, 0 to 2 percent slopes	37.00	47.0%	IIs	80	43	14	53
G851A	Nahon-Aberdeen-Exline silt loams, 0 to 2 percent slopes	28.09	35.7%	IVs	46	28	8	39
G862A	Harmony-Beotia silt loams, 0 to 2 percent slopes	7.67	9.7%	IIs	92	47	17	61
G790B	Kranzburg-Brookings silt loams, 2 to 6 percent slopes	4.66	5.9%	Ile	86	56	21	61
G872A	Beotia-Rondell silt loams, 0 to 2 percent slopes	1.35	1.7%	IIC	91	31	10	62
Weighted Average				2.71	69.6	38.6	12.5	*n 49.4

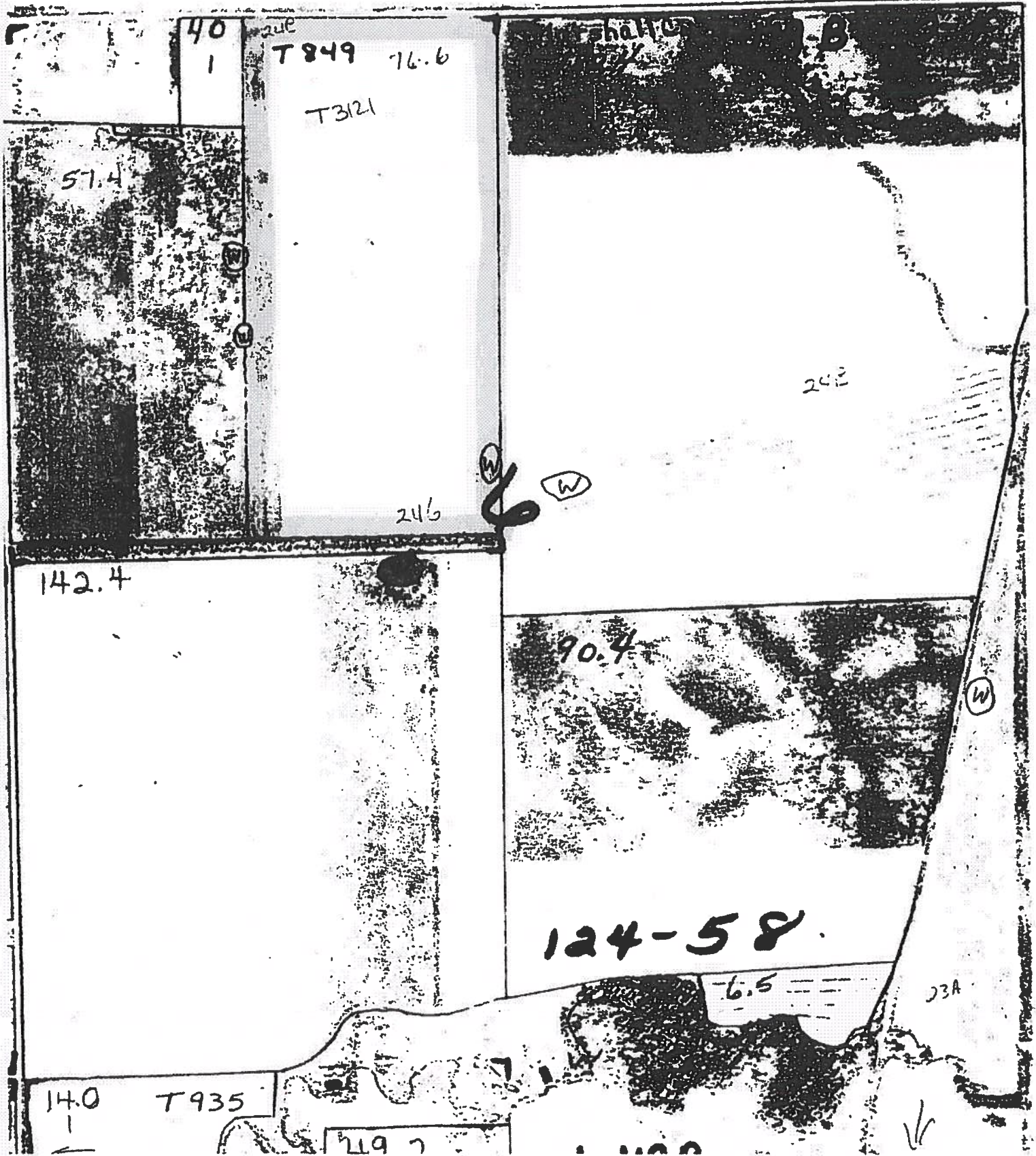
*n: The aggregation method is "Weighted Average using all components"

*c: Using Capabilities Class Dominant Condition Aggregation Method

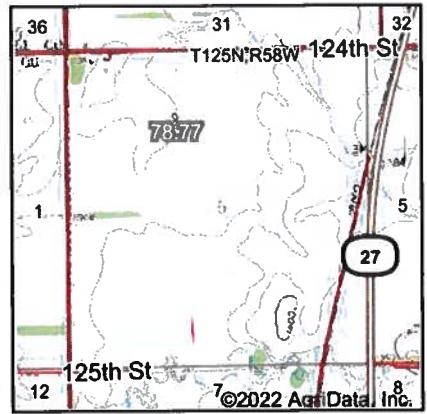
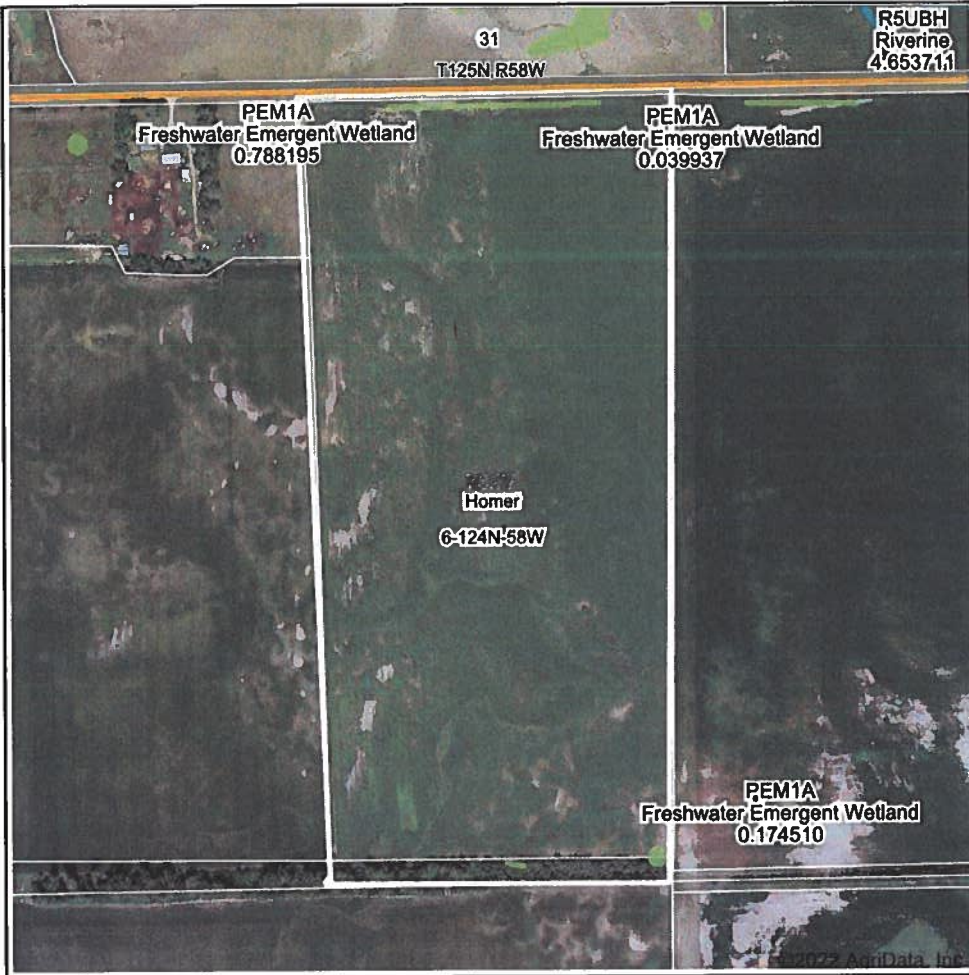
Soils data provided by USDA and NRCS.

original →

NOT TO SCALE



Wetlands Map



State: **South Dakota**
 Location: **6-124N-58W**
 County: **Day**
 Township: **Homer**

Maps Provided By

 CUSTOMIZED ONLINE MAPPING
 © AgriData, Inc. 2021 www.AgriDataInc.com

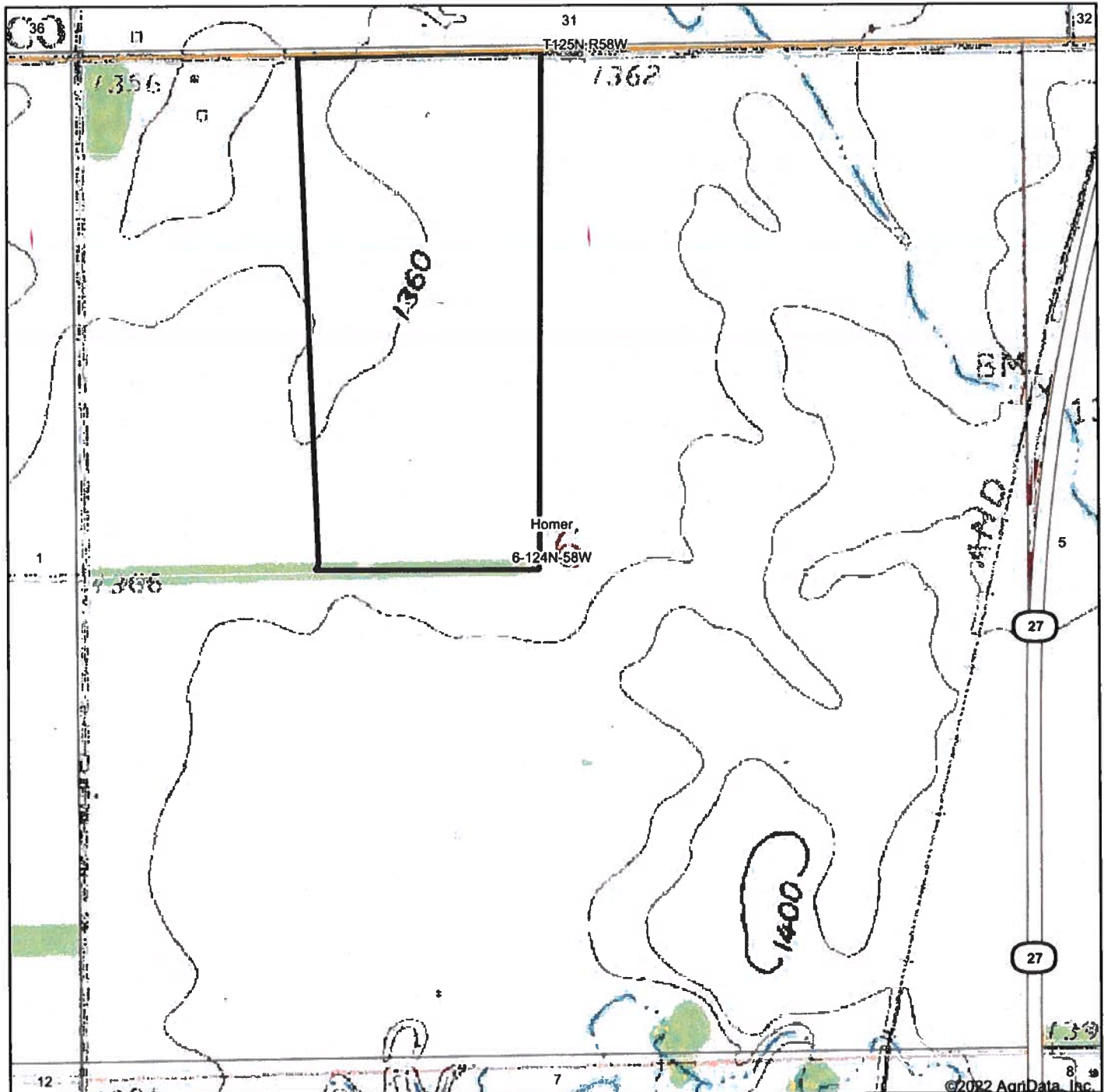


Classification Code	Type	Acres
PEM1Ax	Freshwater Emergent Wetland	0.34
PEM1A	Freshwater Emergent Wetland	0.22
Total Acres		0.56

Data Source: National Wetlands Inventory website. U.S. DoI, Fish and Wildlife Service, Washington, D.C. <http://www.fws.gov/wetlands/>

Field borders provided by Farm Service Agency as of 5/21/2008.

Topography Map



map center: 45° 34' 50.54, -97° 50' 46.09

0ft 834ft 1668ft

6-124N-58W
Day County
South Dakota



Maps Provided By
surety
CUSTOMIZED ONLINE MAPPING
 © AgriData, Inc. 2021 www.AgrDataInc.com

Field borders provided by Farm Service Agency as of 5/21/2008.