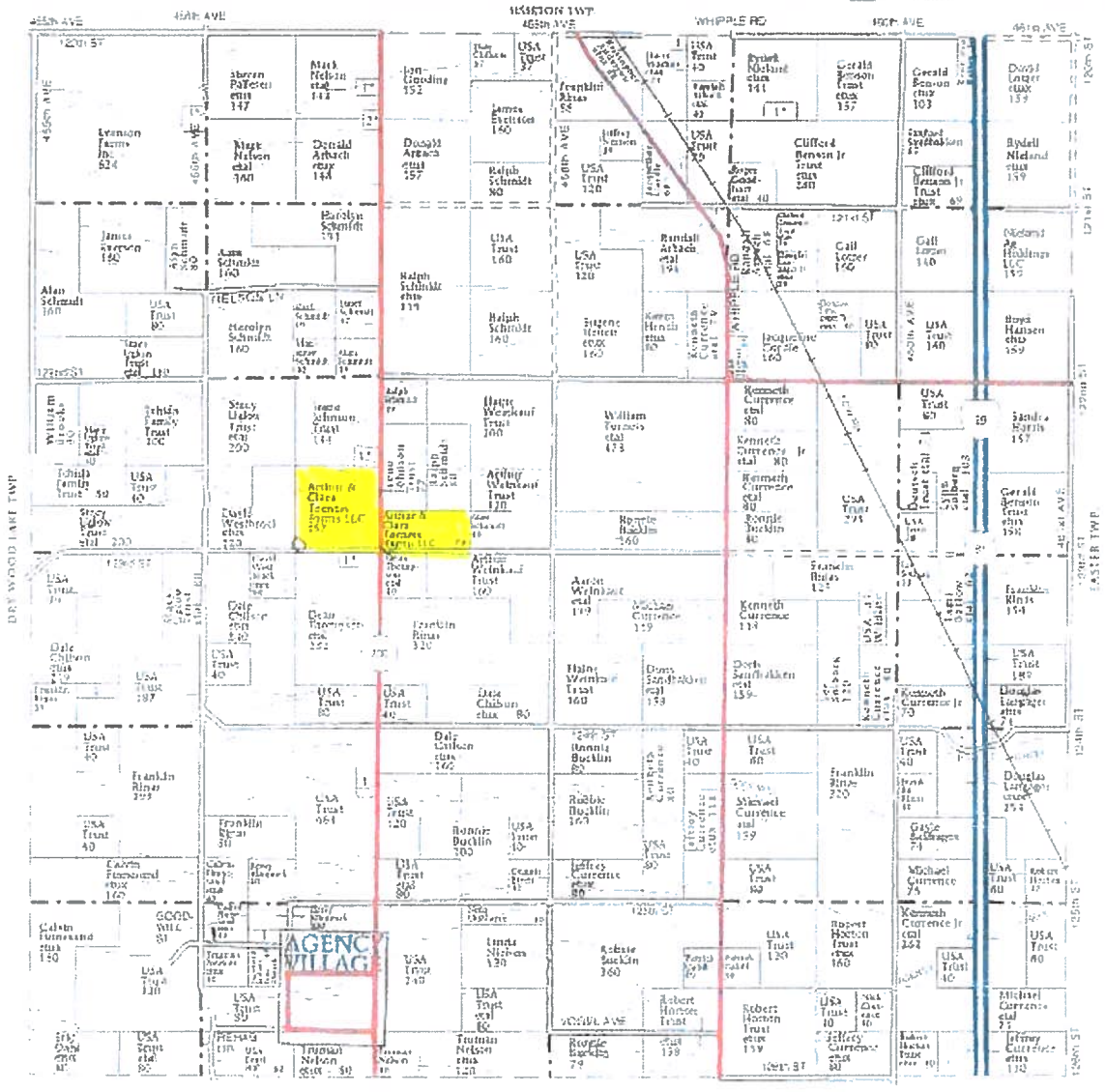


PLAT MAP

T-125-N

GOODWILL PLAT

R-51-W



AGENCY TWP

TRACT 2



United States
Department of
Agriculture

Roberts County, South Dakota



Common Land Unit Tract Boundary
 Non-Cropland PLSS
 Cropland

Wetland Determination Identifiers

- Restricted Use
- Limited Restrictions
- Exempt from Conservation
- Compliance Provisions

United States Department of Agriculture (USDA) Farm ownership; rather it depicts the information provided directly assumes all risks associated with its use. USDA-FSA Programs. Wetland identifiers do not represent the size boundaries and determinations or contact USDA Natural

2021 Program Year

Map Created June 21, 2021

Farm 7816

17-125N-51LW

TRACT 2

do not represent a legal survey or reflect actual ownership. The producer accepts the data 'as is' and any user's reliance on this data outside FSA (CPA-026 and attached maps) for exact



United States
Department of
Agriculture

Roberts County, South Dakota



Common Land Unit Tract Boundary
 Non-Cropland
 Cropland
 Tract Boundary
PLSS

Wetland Determination Identifiers

- Restricted Use
- Limited Restrictions
- Exempt from Conservation Compliance Provisions

United States Department of Agriculture (USDA) Farm ownership; rather it depicts the information provided assumes all risks associated with its use. USDA-FS Programs. Wetland identifiers do not represent the boundaries and determinations or contact USDA Nat

2021 Program Year

Map Created June 21, 2021

Farm 7816

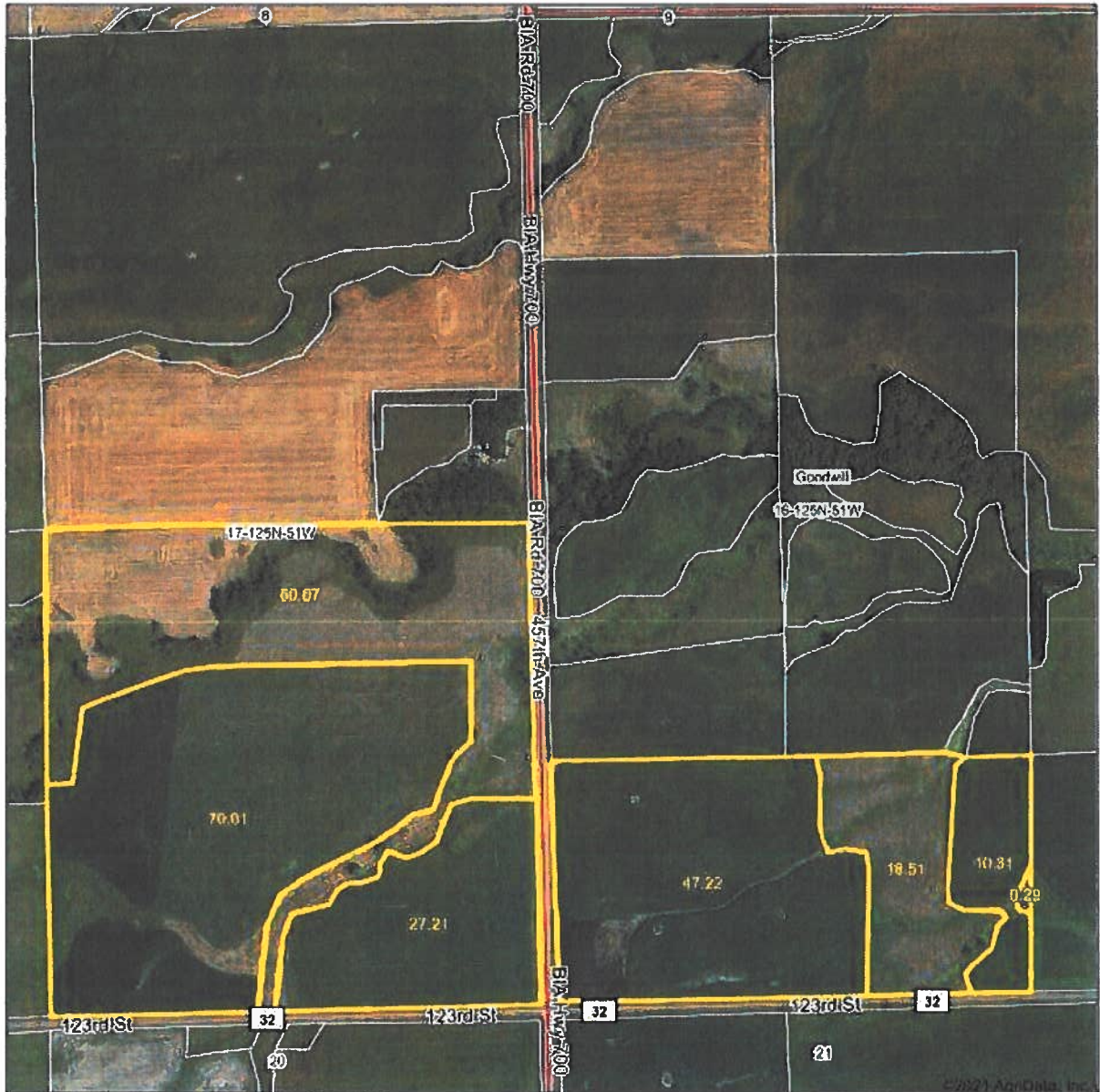
16-125N-51LW

TRACT 2

does not represent a legal survey or reflect actual ery. The producer accepts the data 'as is' and of any user's reliance on this data outside FSA (CPA-026 and attached maps) for exact

LAND USE MAP

Aerial Map



BRAUN
Appraisals, Inc.



Map Center: 45° 35' 32.23" -97° 3' 30.15"

0ft 838ft 1677ft

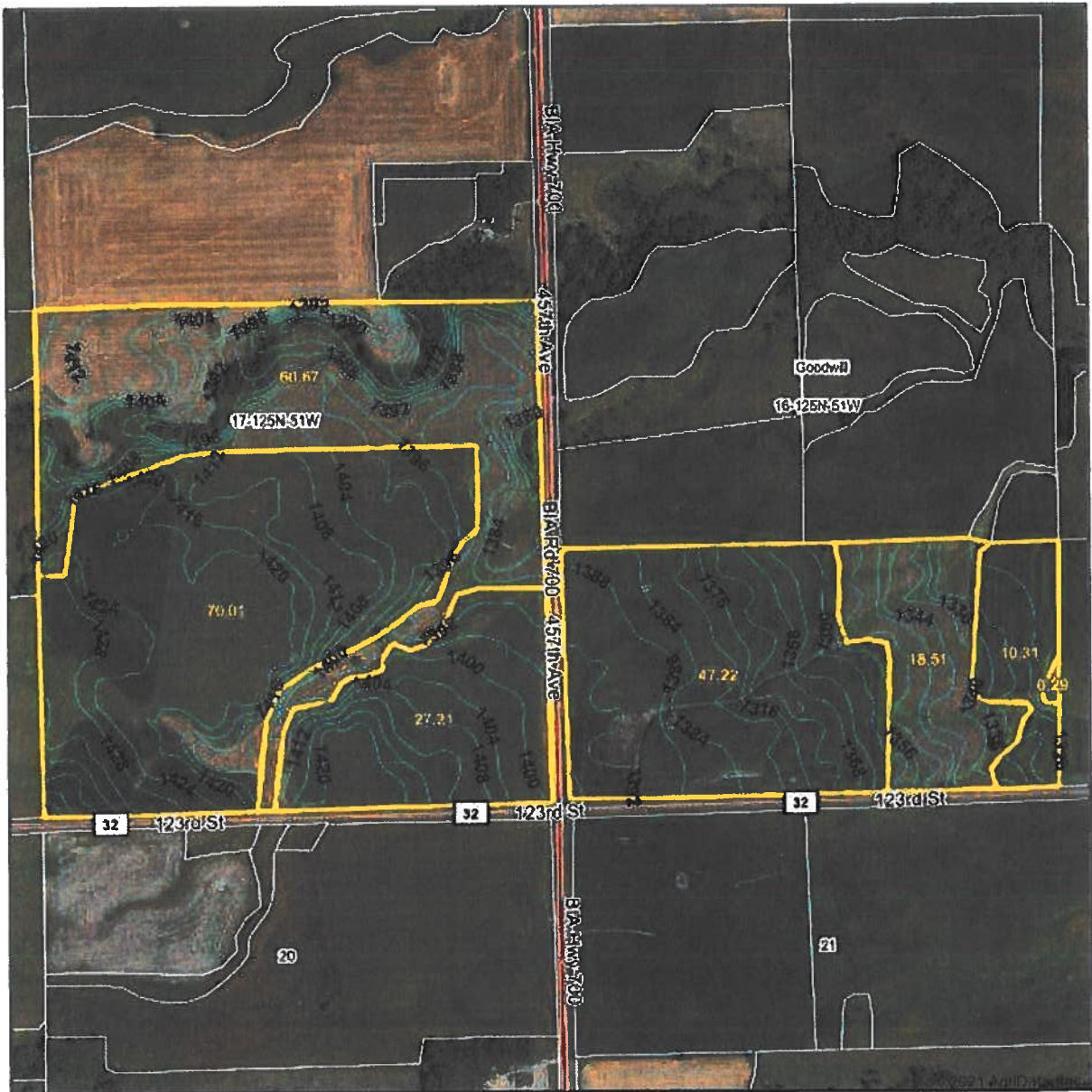
16-125N-51W
Roberts County
South Dakota





2/2/2021

TRACT 2

Topography Contours



<p>BRAUN Appraisals, Inc.</p> <p>Map Provided by  <small>surety</small></p> <p><small>© 2021 Braun Appraisals, Inc.</small></p>	<p>Source: USGS 10 meter dem</p> <p>Interval(ft): 4.0</p> <p>Min: 1,320.3</p> <p>Max: 1,418.9</p> <p>Range: 128.6</p> <p>Average: 1,392.6</p> <p>Standard Deviation: 25.84 ft</p>	<p>0ft 802ft 1603ft</p> <p></p> <p>2/2/2021</p> <p>Map Center: 45° 36' 32.23", -97° 3' 39.13"</p>
	<p>16-125N-51W Robert's County South Dakota</p>	

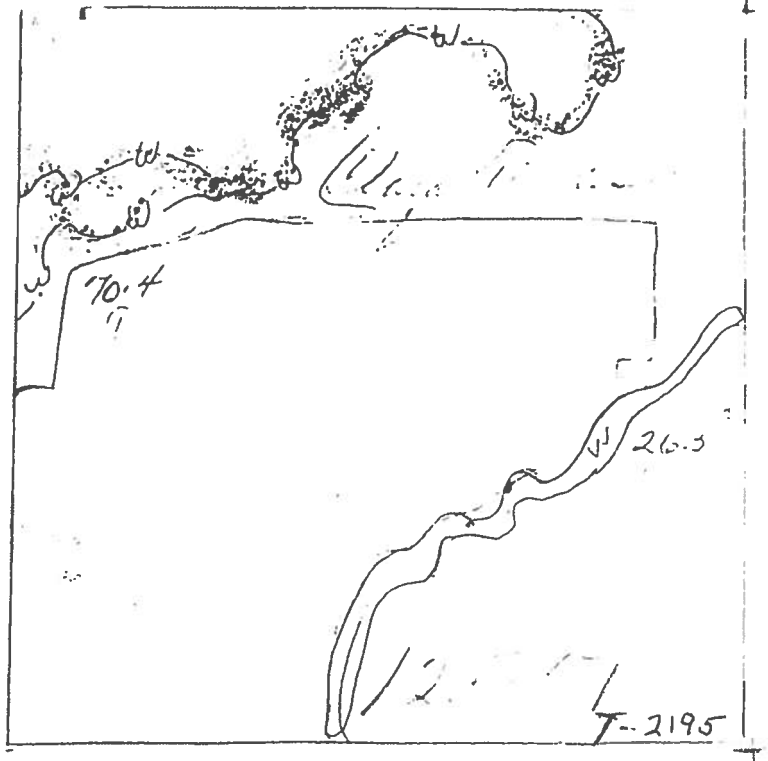
TRACT 2

OFFICIAL WETLAND
DETERMINATION FOR TRACT ONLY.



- (W) Wetland
- (FW) Ditched wetland prior to 12-23-85 but still wetland
- (PC) Converted wetland prior to 12-23-85
- (CW) Converted Wetland after 12-23-85
- () Ditched prior to 12-23-85

SE
17



TRACT 2

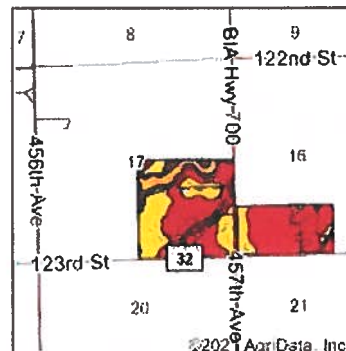
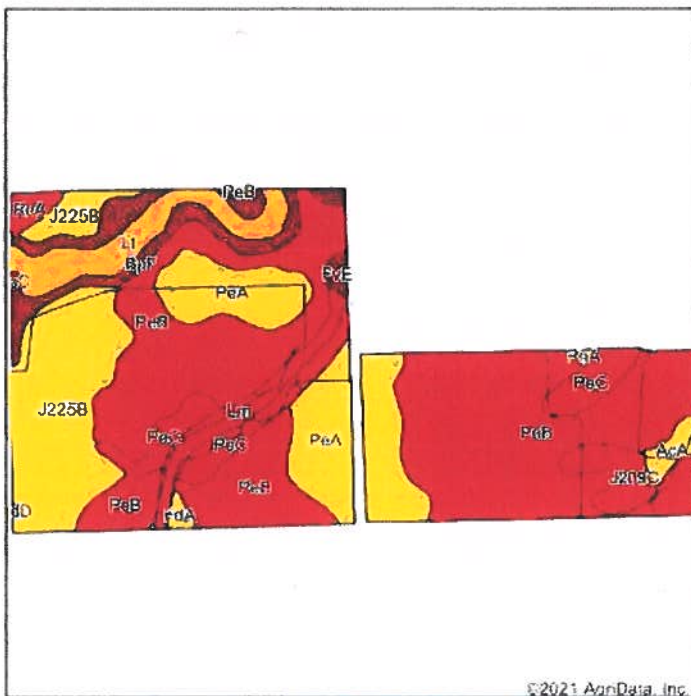
NOT TO SCALE

16



TRACT 2

Soils Map



State: **South Dakota**
 County: **Roberts**
 Location: **16-125N-51W**
 Township: **Goodwill**
 Acres: **234.22**
 Date: **2/2/2021**

BRAUN
Appraisals, Inc.



Soils data provided by USDA and NRCS

Area Symbol: 9D106 Soil Area Version: 21

Code	Soil Description	Acres	Percent of field	Moisture Class Legend	Moisture Class %	Irr Class %	Productivity Index	Corr	in NCCP Soybeans
PeB	Peever clay loam, 2 to 3 percent slopes	108.62	46.5%		IIIe		38		56
J225B	Forman-Assted complex, 1 to 4 percent slopes	31.01	14.5%		IIIe		38		65
PeA	Peever clay loam, 0 to 2 percent slopes	32.82	14.1%		IIIe		33		60
BoF	Boise-Forman loams, 20 to 40 percent slopes	13.82	5.9%		VIIIe		20	8	16
PeC	Peever clay loam, 8 to 8 percent slopes	13.23	5.6%		IIIe		56	59	40
I	Lamona silt clay loam, 0 to 2 percent slopes frequently flooded	11.69	5.1%		VIIe		24		45
LH	Lamona silt clay loam, 0 to 2 percent slopes occasionally flooded	8.76	2.9%		IIIe		58		76
J209C	Forman-Boise complex, 6 to 12 percent slopes, moderately eroded	5.98	2.3%		IIIe		65		59
AcA	Assted clay loam, 1 to 3 percent slopes	2.16	1.1%		IIIe		34		72
HeA	Menasha loam, 0 to 2 percent slopes	2.26	1.0%		IIIe	IIIe	43		32
FyF	Forman-Boise stony complex, 8 to 40 percent slopes	1.09	0.5%		VIIIe		25	17	27
FdA	Fordella loam, 0 to 2 percent slopes	0.91	0.4%		IIIe	IIIe	58		38
PeA	Peever-Cavir complex, 0 to 3 percent slopes	0.86	0.4%		IIIe		35	34	45
ND	Nadine clay loam, 9 to 15 percent slopes	0.12	0.1%		IIIe		48	32	13
Weighted Average							65.6	3.5	in 54.1

*In: The aggregation method is "Weighted Average using all components"
 *C: Using Capabilities Code Dominant Condition Aggregation Method

Soils data provided by USDA and NRCS

TRACT 2

South Dakota
 Roberts
 Report ID: FSA-156EZ

U.S. Department of Agriculture
 Farm Service Agency
 Abbreviated 156 Farm Record

FARM: 7816
 Prepared: 8/30/21 9:41 AM
 Crop Year: 2021
 Page: 1 of 2

DISCLAIMER: This is data extracted from the web farm database. Because of potential messaging failures in MIDAS, this data is not guaranteed to be an accurate and complete representation of data contained in the MIDAS system, which is the system of record for Farm Records.

Farm Identifier

Farms Associated with Operator:

ARC/PLC G/F Eligibility: Eligible

CRP Contract Number(s): None

Farmland	Cropland	DCP Cropland	WBP	WRP	EWP	CRP Cropland	GRP	Farm Status	Number of Tracts
234.22	154.27	154.27	0.0	0.0	0.0	0.0	0.0	Active	2
State Conservation	Other Conservation	Effective DCP Cropland	Double Cropped	MPL/FWP	Native Sod				
0.0	0.0	154.27	0.0	0.0	0.0				

ARC/PLC

PLC	ARC-CO	ARC-IC	PLC-Default	ARC-CO-Default	ARC-IC-Default
WHEAT, CORN, SOYBN, BARLY	NONE	NONE	NONE	NONE	NONE

Crop	Base Acreage	PLC Yield	CCC-505 CRP Reduction
WHEAT	34.7	54	0.00
CORN	39.0	47	0.00
SOYBEANS	35.4	31	0.00
BARLEY	0.5	40	0.00
Total Base Acres:	109.6		

Tract Number: 2195 Description D12 SE 17 125 51
 FSA Physical Location : Roberts, SD ANSI Physical Location: Roberts, SD
 BIA Range Unit Number:
 HEL Status: NHEL: no agricultural commodity planted on undetermined fields
 Wetland Status: Tract contains a wetland or farmed wetland
 WL Violations: None

Farmland	Cropland	DCP Cropland	WBP	WRP	EWP	CRP Cropland	GRP
157.89	96.74	96.74	0.0	0.0	0.0	0.0	0.0
State Conservation	Other Conservation	Effective DCP Cropland	Double Cropped	MPL/FWP	Native Sod		
0.0	0.0	96.74	0.0	0.0	0.0		

Crop	Base Acreage	PLC Yield	CCC-505 CRP Reduction
WHEAT	22.1	54	0.00

TRACT 2

South Dakota

Roberts

Report ID: FSA-156EZ

U.S. Department of Agriculture

Farm Service Agency

Abbreviated 156 Farm Record

FARM: 7816

Prepared: 8/30/21 9:41 AM

Crop Year: 2021

Page: 2 of 2

DISCLAIMER: This is data extracted from the web farm database. Because of potential messaging failures in MIDAS, this data is not guaranteed to be an accurate and complete representation of data contained in the MIDAS system, which is the system of record for Farm Records.

Crop	Base Acreage	PLC Yield	CCC-505 CRP Reduction
CORN	24.8	47	0.00
SOYBEANS	22.5	31	0.00
BARLEY	0.3	40	0.00
Total Base Acres:	69.7		

Owners: ARTHUR TORNESS & CLARA TORNESS FARMS LLC

Other Producers: None

Tract Number: 2196 Description E11 S2SW 16 125 51

FSA Physical Location : Roberts, SD

ANSI Physical Location: Roberts, SD

BIA Range Unit Number:

HEL Status: NHEL: no agricultural commodity planted on undetermined fields

Wetland Status: Tract contains a wetland or farmed wetland

WL Violations: None

Farmland	Cropland	DCP Cropland	WBP	WRP	EWP	CRP Cropland	GRP
76.33	57.53	57.53	0.0	0.0	0.0	0.0	0.0
State Conservation	Other Conservation	Effective DCP Cropland	Double Cropped	MPL/FWP	Native Sod		
0.0	0.0	57.53	0.0	0.0	0.0		

Crop	Base Acreage	PLC Yield	CCC-505 CRP Reduction
WHEAT	12.6	54	0.00
CORN	14.2	47	0.00
SOYBEANS	12.9	31	0.00
BARLEY	0.2	40	0.00
Total Base Acres:	39.9		

Owners: ARTHUR TORNESS & CLARA TORNESS FARMS LLC

Other Producers: None

TRACT 2