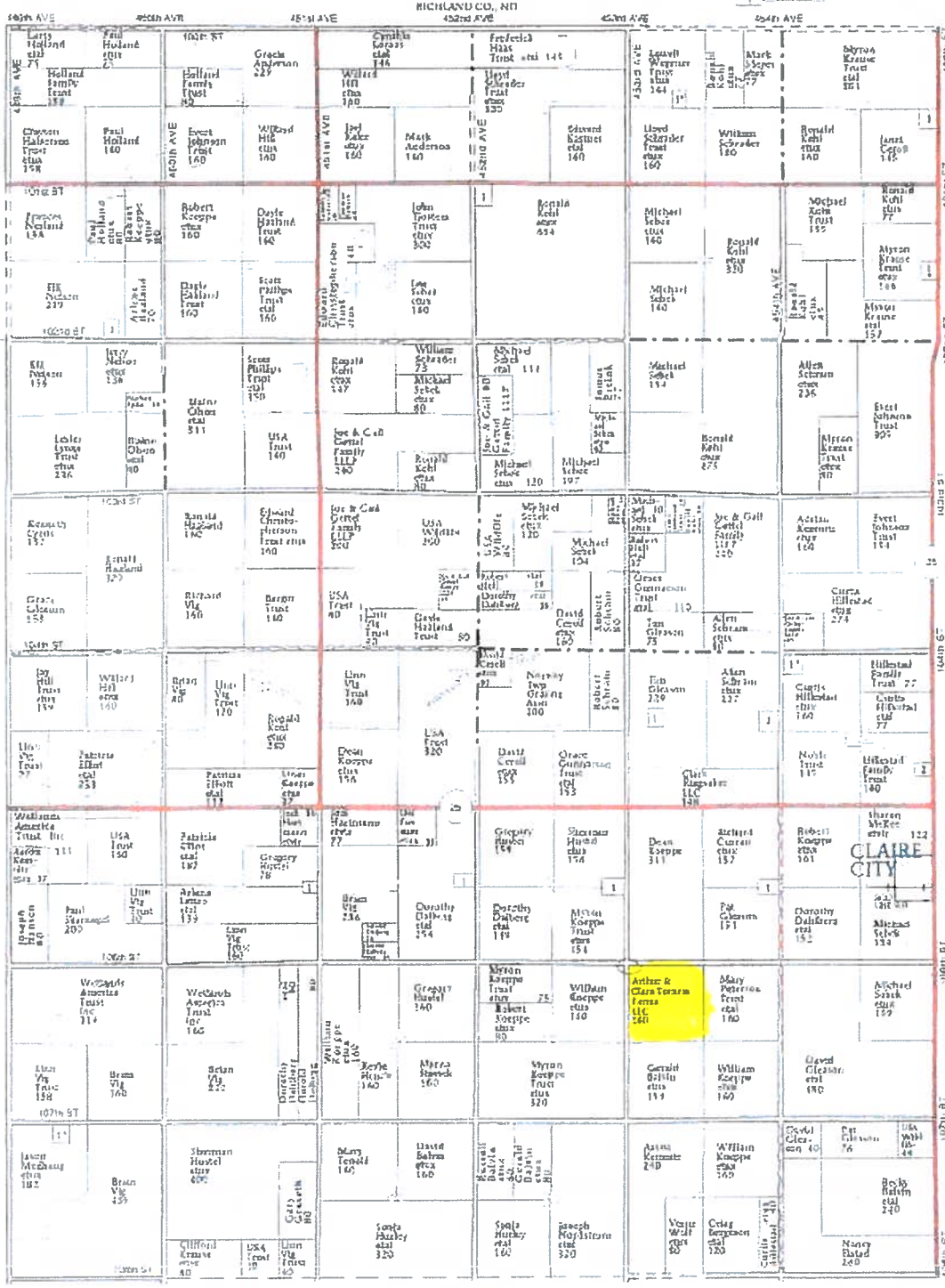


PLAT MAP

T-128-129-N

NORWAY PLAT

R-52-W



TRACT 1



United States
Department of
Agriculture

Roberts County, South Dakota



Common Land Unit Tract Boundary
 Non-Cropland
 Cropland
 Tract Boundary
 PLSS

Wetland Determination
 Restricted Use
 Limited Restrictions
 Exempt from Conservation Compliance Provisions

United States Department of Agriculture (USDA) Farm ownership; rather it depicts the information provided and assumes all risks associated with its use. USDA-FSA Programs. Wetland identifiers do not represent the si boundaries and determinations or contact USDA Natu

2021 Program Year

Map Created April 05, 2021

Farm 10050

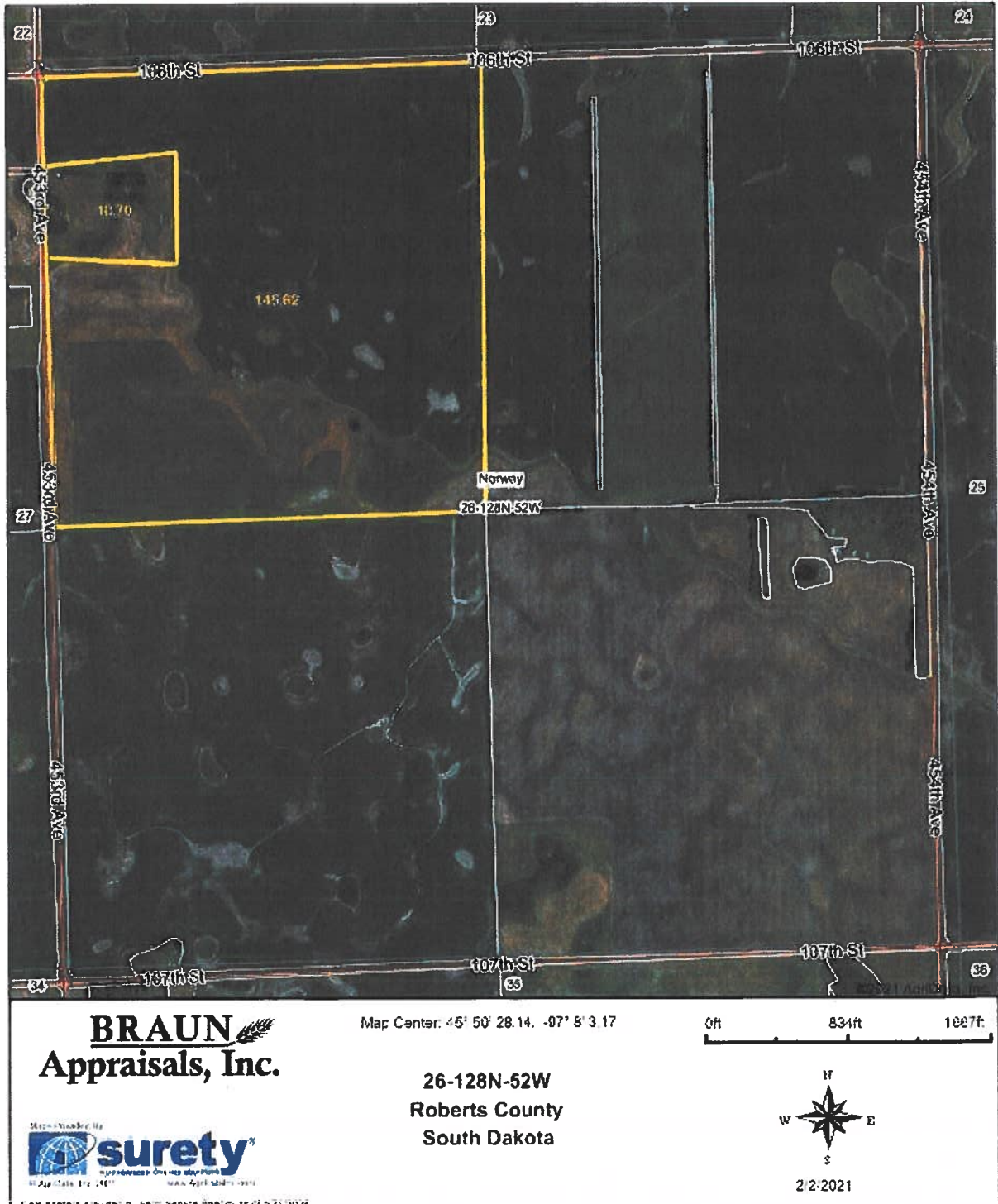
26-128N-52LW

TRACT 1

as not represent a legal survey or reflect actual ry. The producer accepts the data 'as is' and any user's reliance on this data outside FSA (CPA-026 and attached maps) for exact

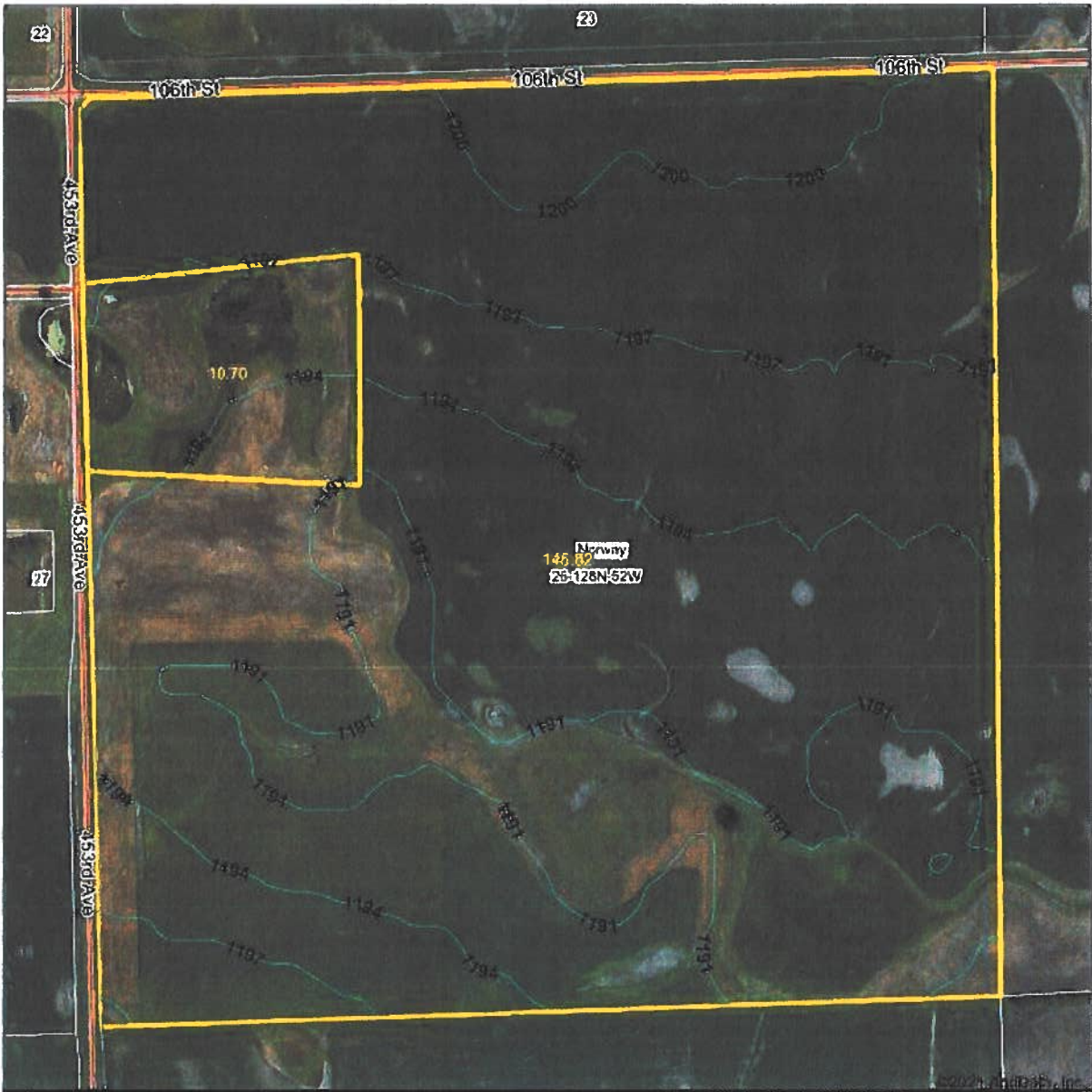
LAND USE MAP

Aerial Map



TRACT 1

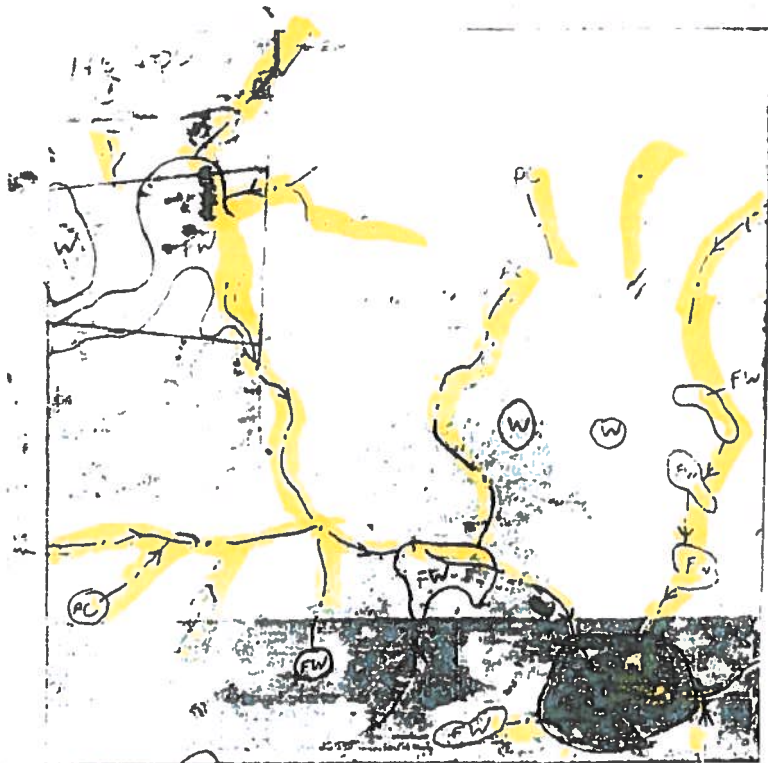
Topography Contours



BRAUN Appraisals, Inc.	Source: USGS 10' meter dem	0ft 411ft 823ft
	Interval(ft): 3.0	
	Min: 1,190.7	26-128N-52W Roberts County South Dakota
<small>© 2021 Braunschweig & Associates, Inc.</small>	Max: 1,200.9	2/2/2021
<small>File path: \\sures\apps\GIS\Projects\26-128N-52W\2021</small>	Range: 10.2	Map Center: 45° 50' 28.14", -97° 6' 3 17"
	Average: 1,184.5	
	Standard Deviation: 5.18 ft	

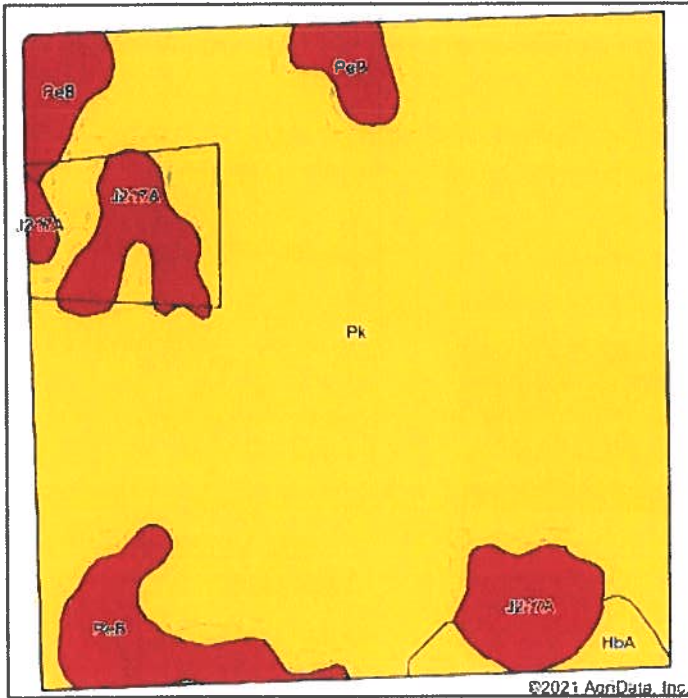
TRACT 1

NOT TO SCALE

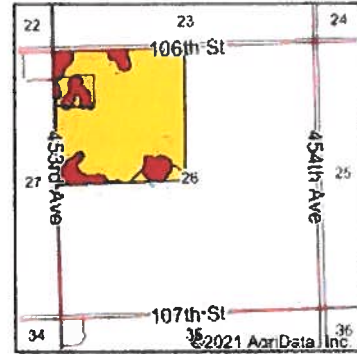


TRACT 1

Soils Map



Soils data provided by USDA and NRCS



State: **South Dakota**
 County: **Roberts**
 Location: **26-128N-52W**
 Township: **Norway**
 Acres: **156.32**
 Date: **2/2/2021**

BRAUN
 Appraisals, Inc.



Area Symbol: 9D103 Soil Area Version: 21

Code	Soil Description	Acres	Percent of Field	Non-ir Class Legend	Non-ir Class Code	Productivity Index	Com	ir	NRCSPI Systems
Pk	Peever-Tonka complex	129.35	82.7%		IIe	70	70		39
PeB	Peever clay loam, 2 to 8 percent slopes	12.67	8.1%		IIIe	6E			56
J217A	Parrell silty clay loam, occasionally ponded, 0 to 1 percent slopes	11.43	7.3%		IIIw	71			45
HbA	Hamber-Tonka complex, 0 to 3 percent slopes	2.87	1.8%		IIe	6B	70		45
Weighted Average						69.9	69.2		40.9

1e. The aggregation method is "Weighted Average using all components"
 1c. Using Capabilities Class Dominant Condition Aggregation Method

Soils data provided by USDA and NRCS

TRACT 1

South Dakota
 Roberts
 Report ID: FSA-156EZ

U.S. Department of Agriculture
 Farm Service Agency
 Abbreviated 156 Farm Record

FARM: 10050
 Prepared: 8/30/21 9:41 AM
 Crop Year: 2021
 Page: 1 of 2

DISCLAIMER: This is data extracted from the web farm database. Because of potential messaging failures in MIDAS, this data is not guaranteed to be an accurate and complete representation of data contained in the MIDAS system, which is the system of record for Farm Records.

Farm Identifier
 Recon Number
 2016 - 83

Farms Associated with Operator:

ARC/PLC G/F Eligibility: Eligible

CRP Contract Number(s): None

Farmland	Cropland	DCP Cropland	WBP	WRP	EWP	CRP Cropland	GRP	Farm Status	Number of Tracts
156.32	154.56	154.56	0.0	0.0	0.0	0.0	0.0	Active	1
State Conservation	Other Conservation	Effective DCP Cropland	Double Cropped	MPL/FWP	Native Sod				
0.0	0.0	154.56	0.0	0.0	0.0				

ARC/PLC

PLC	ARC-CO	ARC-IC	PLC-Default	ARC-CO-Default	ARC-IC-Default
WHEAT	CORN , SOYBN	NONE	NONE	NONE	NONE

Crop	Base Acreage	PLC Yield	CCC-505 CRP Reduction	HIP
WHEAT	16.14	54	0.00	
CORN	73.13	140	0.00	0
SOYBEANS	56.24	40	0.00	0
Total Base Acres:	145.51			

Tract Number: 12570 Description NW-26-128-52

FSA Physical Location : Roberts, SD ANSI Physical Location: Roberts, SD

BIA Range Unit Number:

HEL Status: NHEL: no agricultural commodity planted on undetermined fields

Recon Number
 2016- 82

Wetland Status: Tract contains a wetland or farmed wetland

WL Violations: None

Farmland	Cropland	DCP Cropland	WBP	WRP	EWP	CRP Cropland	GRP
156.32	154.56	154.56	0.0	0.0	0.0	0.0	0.0
State Conservation	Other Conservation	Effective DCP Cropland	Double Cropped	MPL/FWP	Native Sod		
0.0	0.0	154.56	0.0	0.0	0.0		

Crop	Base Acreage	PLC Yield	CCC-505 CRP Reduction
WHEAT	16.14	54	0.00
CORN	73.13	140	0.00
SOYBEANS	56.24	40	0.00

TRACT 1

South Dakota

Roberts

Report ID: FSA-156EZ

U.S. Department of Agriculture

Farm Service Agency

Abbreviated 156 Farm Record

FARM: 10050

Prepared: 8/30/21 9:41 AM

Crop Year: 2021

Page: 2 of 2

DISCLAIMER: This is data extracted from the web farm database. Because of potential messaging failures in MIDAS, this data is not guaranteed to be an accurate and complete representation of data contained in the MIDAS system, which is the system of record for Farm Records.

Crop	Base Acreage	PLC Yield	CCC-505 CRP Reduction
Total Base Acres:	145.51		

Owners: ARTHUR TORNESS & CLARA TORNESS FARMS LLC

Other Producers: None

TRACT 1