

Aerial Map



map center: 45° 44' 22.73, 96° 59' 20.21

scale: 9579

36-127N-51W
Roberts County
South Dakota



8/23/2014

Maps Provided By:

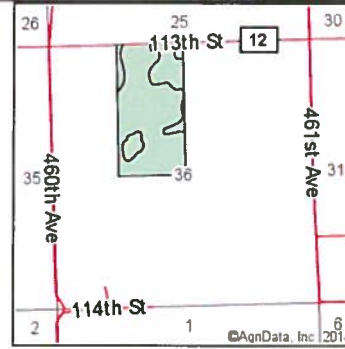
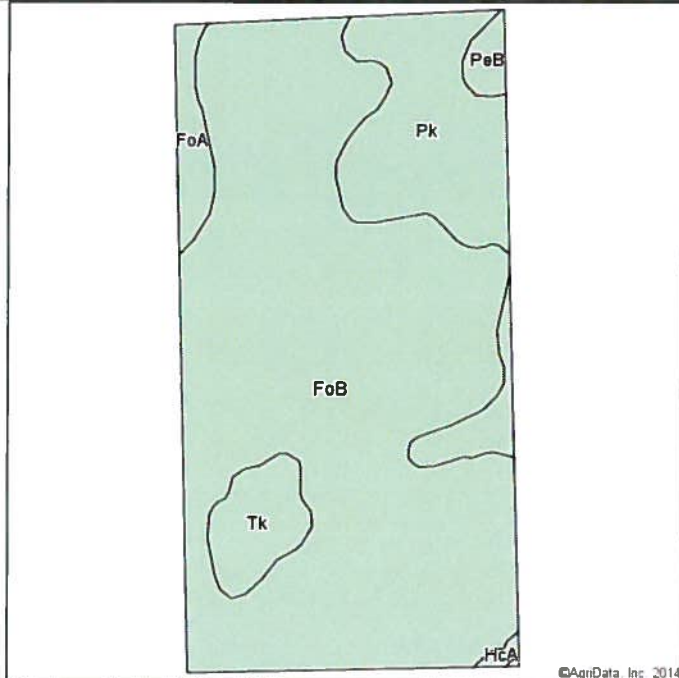


© AgriData, Inc. 2014 www.AgriDataInc.com

Field borders provided by Farm Service Agency as of 5/21/2008. Aerial photography provided by Aerial Photography Field Office.

Soil Map

Soils Version
 ▼



State: **South Dakota**
 County: **Roberts**
 Location: **36-127N-51W**
 Township: **Enterprise**
 Acres: **82.9**
 Date: **8/23/2014**



Area Symbol: SD109, Soil Area Version: 14

Code	Soil Description	Acres	Percent of field	Non-Irr Class	Productivity Index	Corn	Soybeans
FoB	Forman-Aastad loams, 2 to 6 percent slopes	61.84	74.6%	Ile	82	79	30
Pk	Peever-Tonka complex	13.60	16.4%	IIlw	70	70	26
Tk	Tonka silt loam	3.79	4.6%	IVw	60	56	21
FoA	Forman-Aastad loams, 0 to 2 percent slopes	2.36	2.8%	I	87	84	32
PeB	Peever clay loam, 2 to 6 percent slopes	1.05	1.3%	IIIe	66	67	25
HcA	Hamerly-Vallers loams, 0 to 2 percent slopes	0.26	0.3%	IIw	71	70	22
Weighted Average					78.9	76.4	28.9

Field borders provided by Farm Service Agency as of 5/21/2008. Aerial photography provided by Aerial Photography Field Office.

Topography Map



map center: 45° 44' 22.77, 96° 59' 20.

scale: 9595



5/19/2014

36-127N-51W
Roberts County
South Dakota

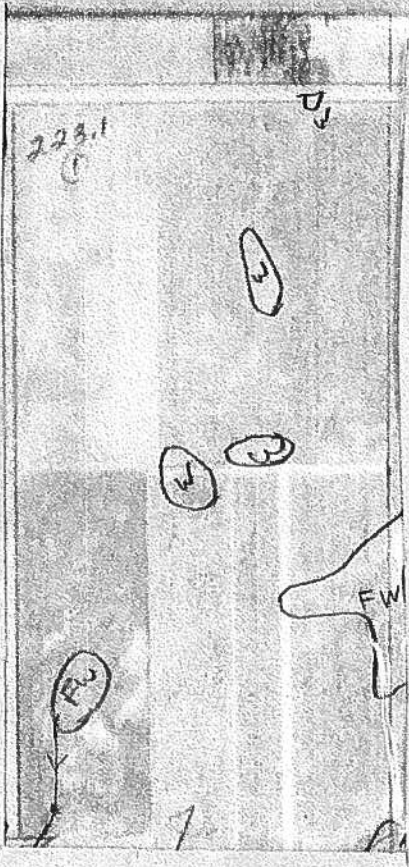
Maps Provided By:



CUSTOMER ONLINE MAPPING
© AgriData, Inc. 2014 www.AgrIDataInc.com

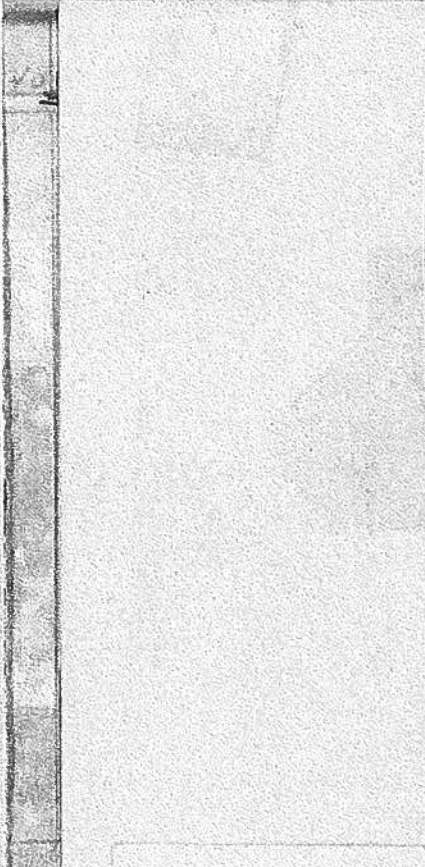
Field borders provided by Farm Service Agency as of 5/21/2008. Aerial photography provided by Aerial Photography Field Office.

NOT TO SCALE



11/17/11

11/17/11



act Number: 11996 Description: E2NW 36 127 51

A Range Unit Number:

EL Status: NHIEL: no agricultural commodity planted on undetermined fields

etland Status: Tract contains a wetland or farmed wetland

L Violations: None

FAVWR
History
N

Farmland	Cropland	DCP Cropland	WBP	WRP/EWP	CRP Cropland	GRP
80.43	80.43	80.43	0.0	0.0	0.0	0.0
State Conservation	Other Conservation	Effective DCP Cropland	Double Cropped	MPL/FWP		
0.0	0.0	80.43	0.0	0.0		

Crop	Base Acreage	Direct Yield	CC Yield	CCC-505 CRP Reduction
WHEAT	1.8	25	31	0.0
CORN	17.2	53	139	0.0
SOYBEANS	61.4	33	39	0.0

Total Base Acres: 80.4

Producers: DANIEL AUGUST MAROHL
Other Producers: None
BETTY ANN MAROHL

TRACT 1:

LAND AREA:

Cropland	80	Acres
Pasture/non-crop	0	Acres
Road and waste	0	Acres
Total	80	Acres

IMPROVEMENTS: There are no improvements on this Tract.

Assessed Valuation and Taxes: 2014 Assessor's Full & True Value / 2013 Taxes
Payable in 2014:

	<u>Land:</u>	<u>Taxes:</u>
Enterprise Twp:		
E1/2NW1/4	\$88,167.61	\$795.54
36-127-51		

SOILS INFORMATION: Overall soil rating .822

LAND CLASS:	SYM:	DESC:	Soil Rating	% SLOPE:	AC.
I	FoA	Forman-Aastad loams	.890	0 - 2	2.5
IIe	FoB	Forman-Aastad loams	.844	2 - 6	59.5
IIs	Pk	Peever-Tonka complex	.773	0 - 2	13.0
IIIe	PeB	Peever clay loam	.774	2 - 6	1.0
IVw	Tk	Tonka silt loam	.621	0 - 2	4.0

Class 1: 2.5 Ac (3%), Class 2: 72.5 Ac (90%), Class 3: 1 Ac (1%), Class 4: 4.0 Ac (6%)

The main soil types on the tillable acres are Class 1 and 2 Forman-Aastad loams these are good producing soils on 0% - 6% slopes. There are smaller amounts of Class 2 Peever-Tonka complex, Class 3 Peever clay loam and Class 4 Tonka silt loams.

Due to computer rounding some numbers may vary slightly.