

Aerial Map



map center: 45° 13' 1.21, -97° 22' 54.33



12-120N-55W
Day County
South Dakota



8/1/2017

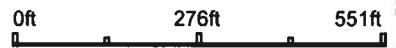
Field borders provided by Farm Service Agency as of 5/21/2008

Aerial Map



©2017 AgriData, Inc.

map center: 45° 12' 39.82, -97° 23' 1.95

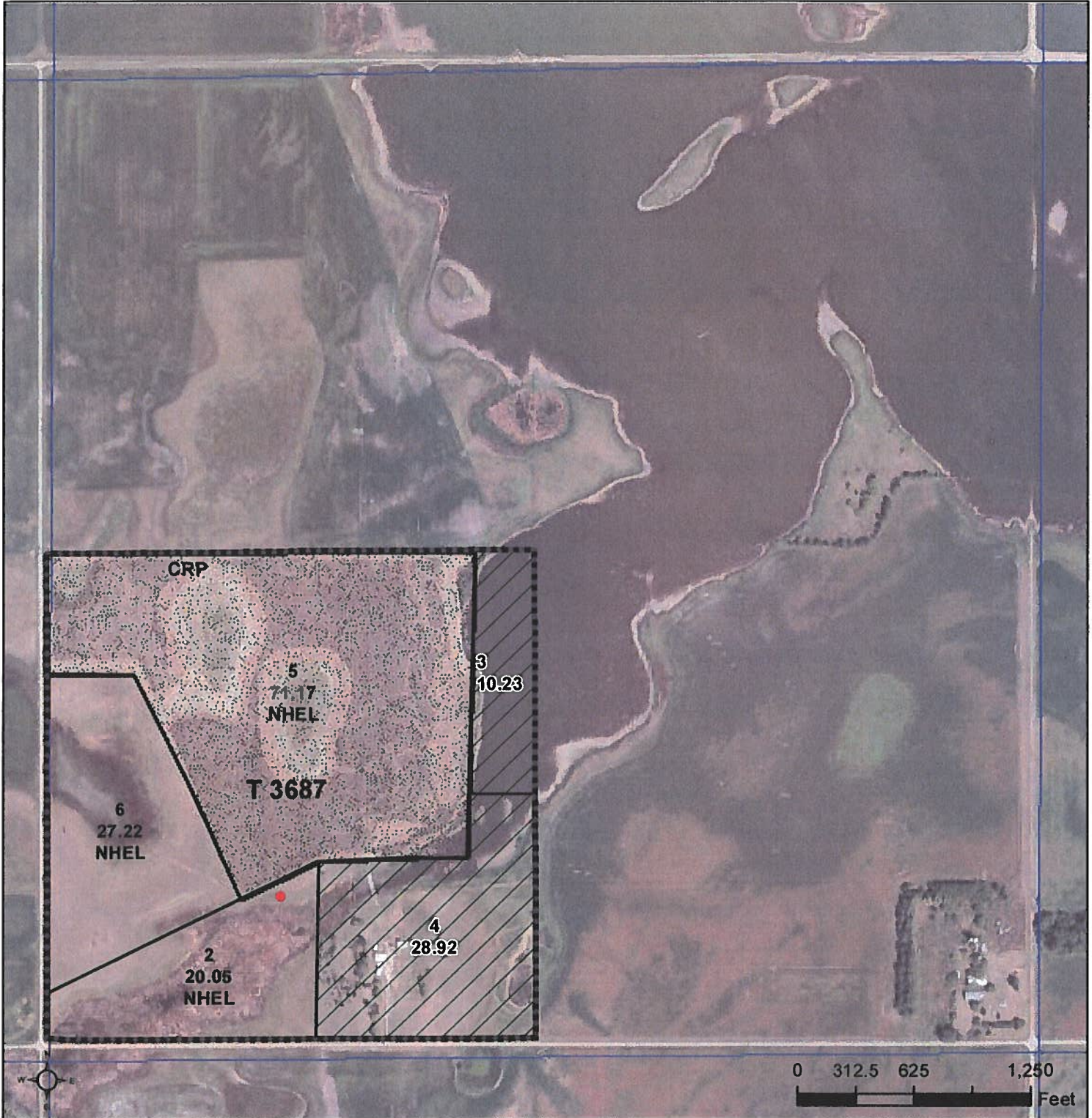


12-120N-55W
Day County
South Dakota







8/1/2017

Field borders provided by Farm Service Agency as of 5/21/2008.



Common Land Unit	 CRP
 Non-Cropland	 Tract Boundary
 Cropland	 PLSS

Wetland Determination Identifiers

-  Restricted Use
-  Limited Restrictions
-  Exempt from Conservations
-  Compliance Provisions

2017 Program Year

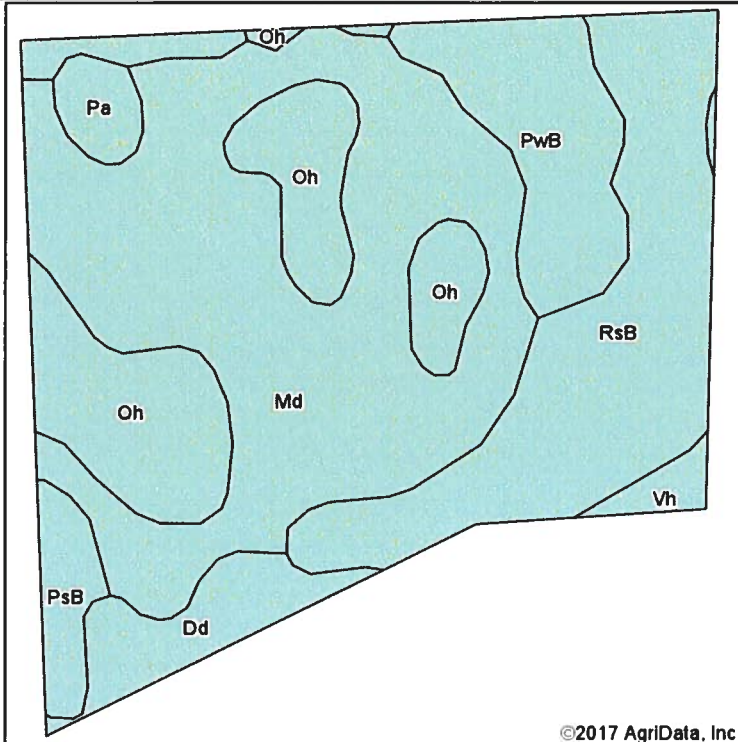
Map Created February 28, 2017

Farm 3394

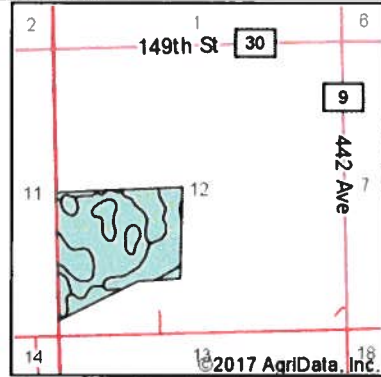
12 -120N -55W

United States Department of Agriculture (USDA) Farm Service Agency (FSA) maps are for FSA Program administration only. This map does not represent a legal survey or reflect actual ownership; rather it depicts the information provided directly from the producer and/or National Agricultural Imagery Program (NAIP) imagery. The producer accepts the data 'as is' and assumes all risks associated with its use. USDA-FSA assumes no responsibility for actual or consequential damage incurred as a result of any user's reliance on this data outside FSA Programs. Wetland identifiers do not represent the size, shape, or specific determination of the area. Refer to your original determination (CPA-026 and attached maps) for exact boundaries and determinations or contact USDA Natural Resources Conservation Service (NRCS).

Soils Map



Soils data provided by USDA and NRCS.



State: **South Dakota**
 County: **Day**
 Location: **12-120N-55W**
 Township: **Wheatland**
 Acres: **100**
 Date: **8/1/2017**



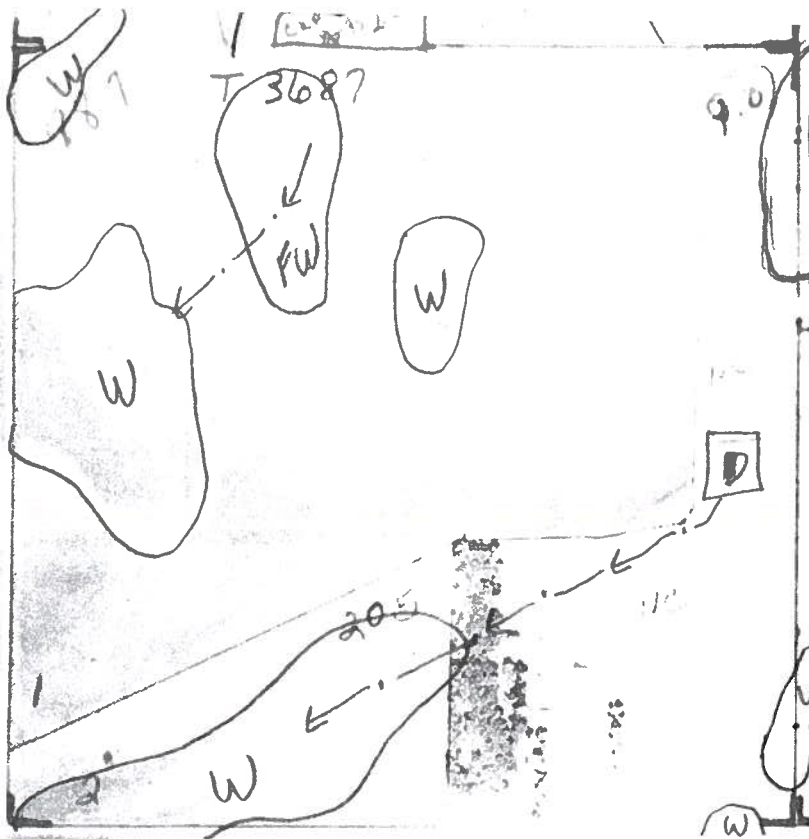
Area Symbol: SD037, Soil Area Version: 22

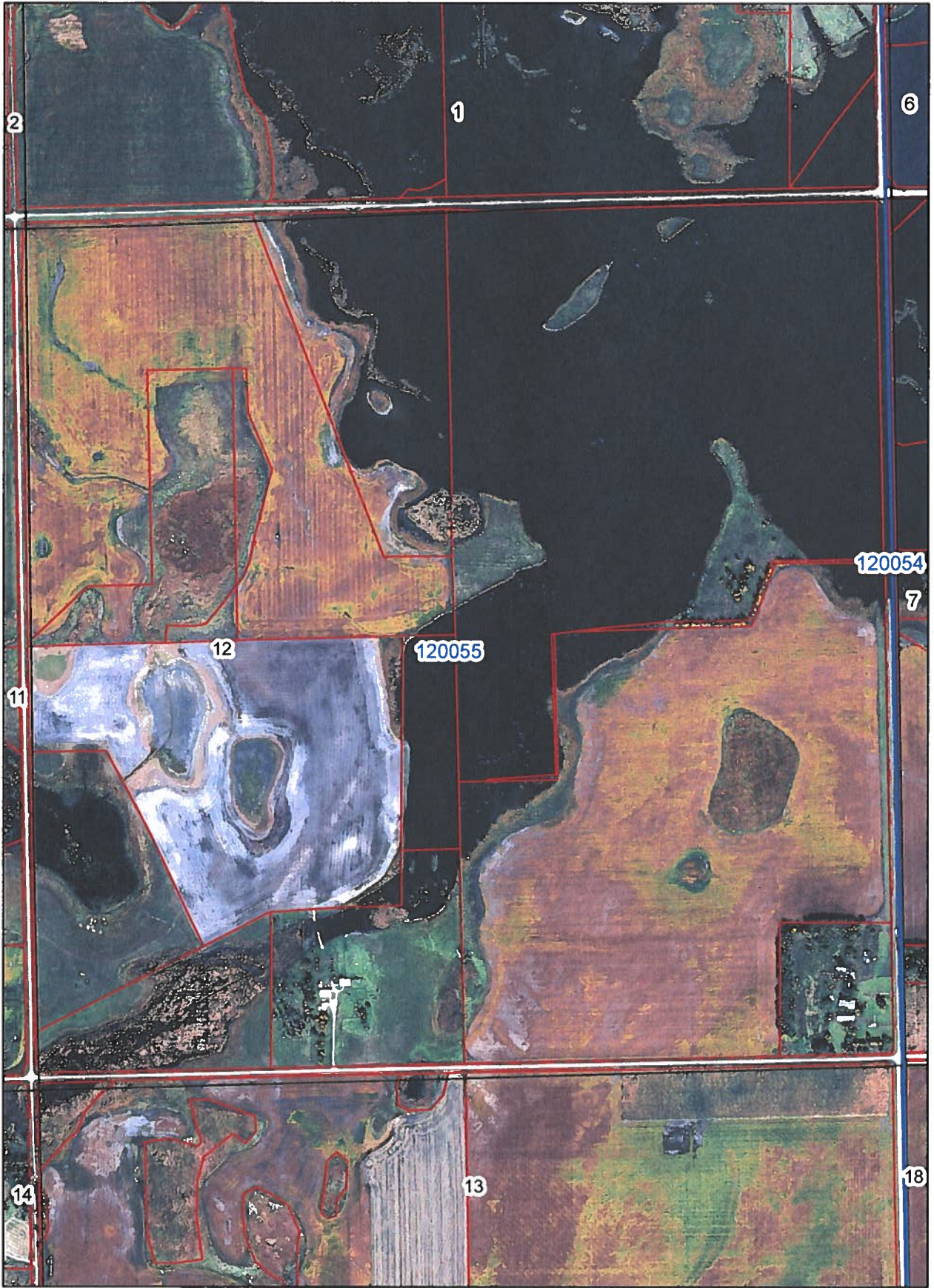
Code	Soil Description	Acres	Percent of field	Non-Irr Class *c	Productivity Index	Corn	Soybeans
Md	Marysland-Divide loams	41.49	41.5%	IVw	51	47	15
RsB	Renshaw-Sioux complex, 2 to 6 percent slopes	21.02	21.0%	IVs	34		
Oh	Oldham silty clay loam	15.13	15.1%	Vw	30	25	8
PwB	Poinsett-Waubay silty clay loams, 1 to 6 percent slopes	9.54	9.5%	Ile	89		
Dd	Divide loam	6.65	6.6%	IIIsl	55	58	19
PsB	Poinsett-Rusklyn-Waubay silty clay loams, 1 to 6 percent slopes	2.88	2.9%	Ile	84		
Pa	Parnell silty clay loam	1.95	2.0%	Vw	34	25	9
Vh	Vallers-Hamerly loams	1.34	1.3%	IVw	57	50	16
Weighted Average					48.8	28.3	9.1

*c: Using Capabilities Class Dominant Condition Aggregation Method

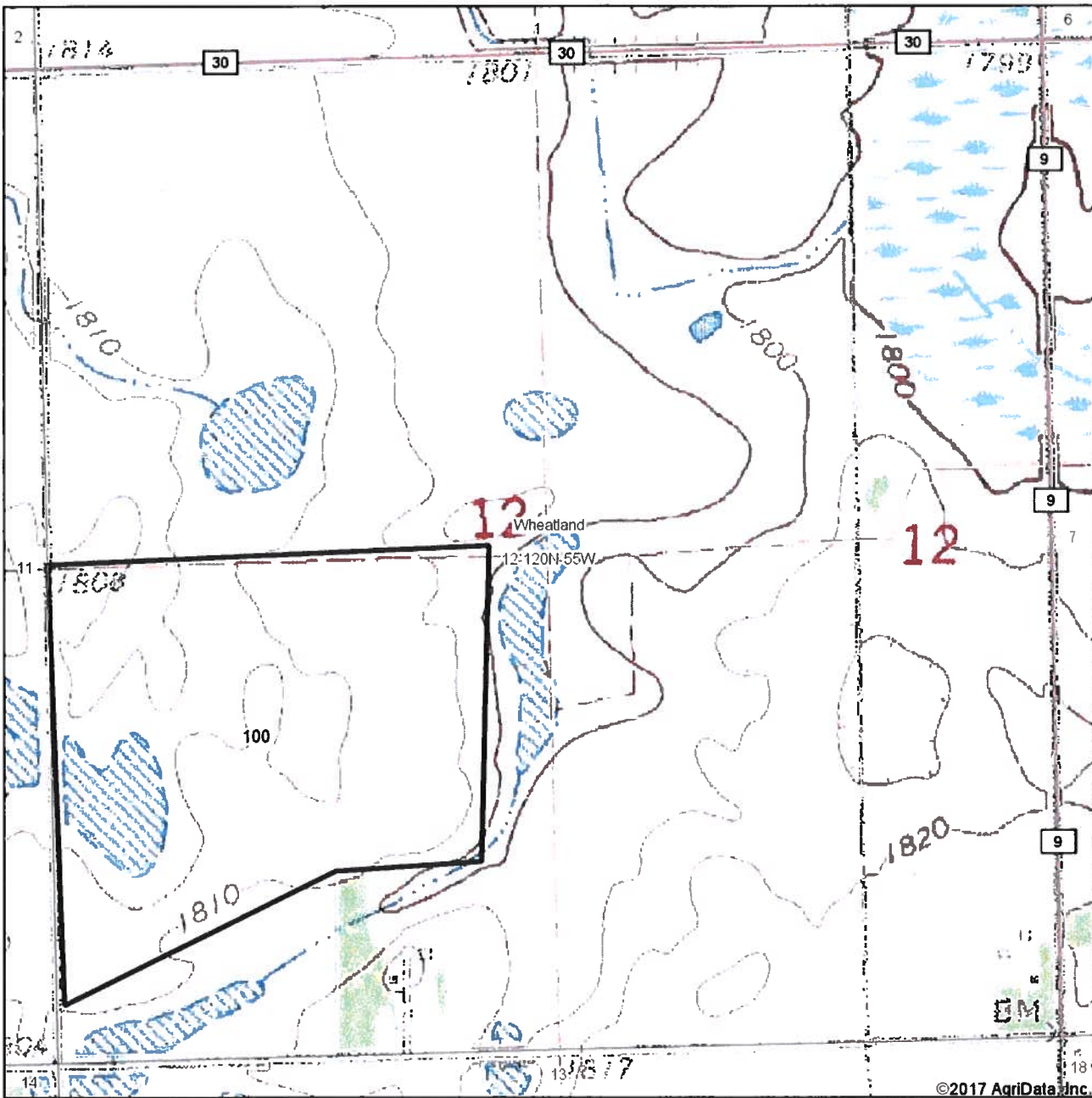
Soils data provided by USDA and NRCS.

SW 1/4 12-120-55

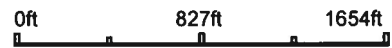




Topography Map



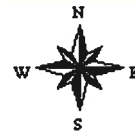
map center: 45° 13' 1.21, -97° 22' 54.33



Maps Provided By:

© AgriData, Inc. 2017 www.AgriDataInc.com

12-120N-55W
Day County
South Dakota



8/1/2017

Field borders provided by Farm Service Agency as of 5/21/2008.