

South Dakota

U.S. Department of Agriculture

Prepared: 8/14/17 8:59 AM

Roberts

Farm Service Agency

Crop Year: 2017

Report ID: FSA-156EZ

Abbreviated 156 Farm Record

Page: 1 of 1

DISCLAIMER: This is data extracted from the web farm database. Because of potential messaging failures in MIDAS, this data is not guaranteed to be an accurate and complete representation of data contained in the MIDAS system, which is the system of record for Farm Records.

Operator Name	Farm Identifier	Recon Number
████████████████████		

Farms Associated with Operator:
 1458, 1459, 1464, 1472, 1476, 1486, 1503, 1508, 1517, 2005, 3755, 4650, 5039, 7309, 8788, 9398, 9802, 9803, 9804, 9805, 9806

CRP Contract Number(s): None

Farmland	Cropland	DCP Cropland	WBP	WRP/EWP	CRP Cropland	GRP	Farm Status	Number of Tracts
38.65	28.46	28.46	0.0	0.0	0.0	0.0	Active	1
State Conservation	Other Conservation	Effective DCP Cropland	Double Cropped	MPL/FWP	Native Sod			
0.0	0.0	28.46	0.0	0.0	0.0			

ARC/PLC			
ARC-IC NONE	ARC-CO CORN, SOYBN	PLC NONE	PLC-Default NONE

Crop	Base Acreage	CTAP Tran Yield	PLC Yield	CCC-505 CRP Reduction
CORN	9.72		122	0.0
SOYBEANS	9.68		38	0.0
Total Base Acres:	19.4			

Tract Number: 3880 Description: C14 SWSE 24 126 52

BIA Range Unit Number:

HEL Status: NHEL: no agricultural commodity planted on undetermined fields

Wetland Status: Tract contains a wetland or farmed wetland

WL Violations: None

Farmland	Cropland	DCP Cropland	WBP	WRP/EWP	CRP Cropland	GRP
38.65	28.46	28.46	0.0	0.0	0.0	0.0
State Conservation	Other Conservation	Effective DCP Cropland	Double Cropped	MPL/FWP	Native Sod	
0.0	0.0	28.46	0.0	0.0	0.0	

Crop	Base Acreage	CTAP Tran Yield	PLC Yield	CCC-505 CRP Reduction
CORN	9.72		122	0.0
SOYBEANS	9.68		38	0.0
Total Base Acres:	19.4			

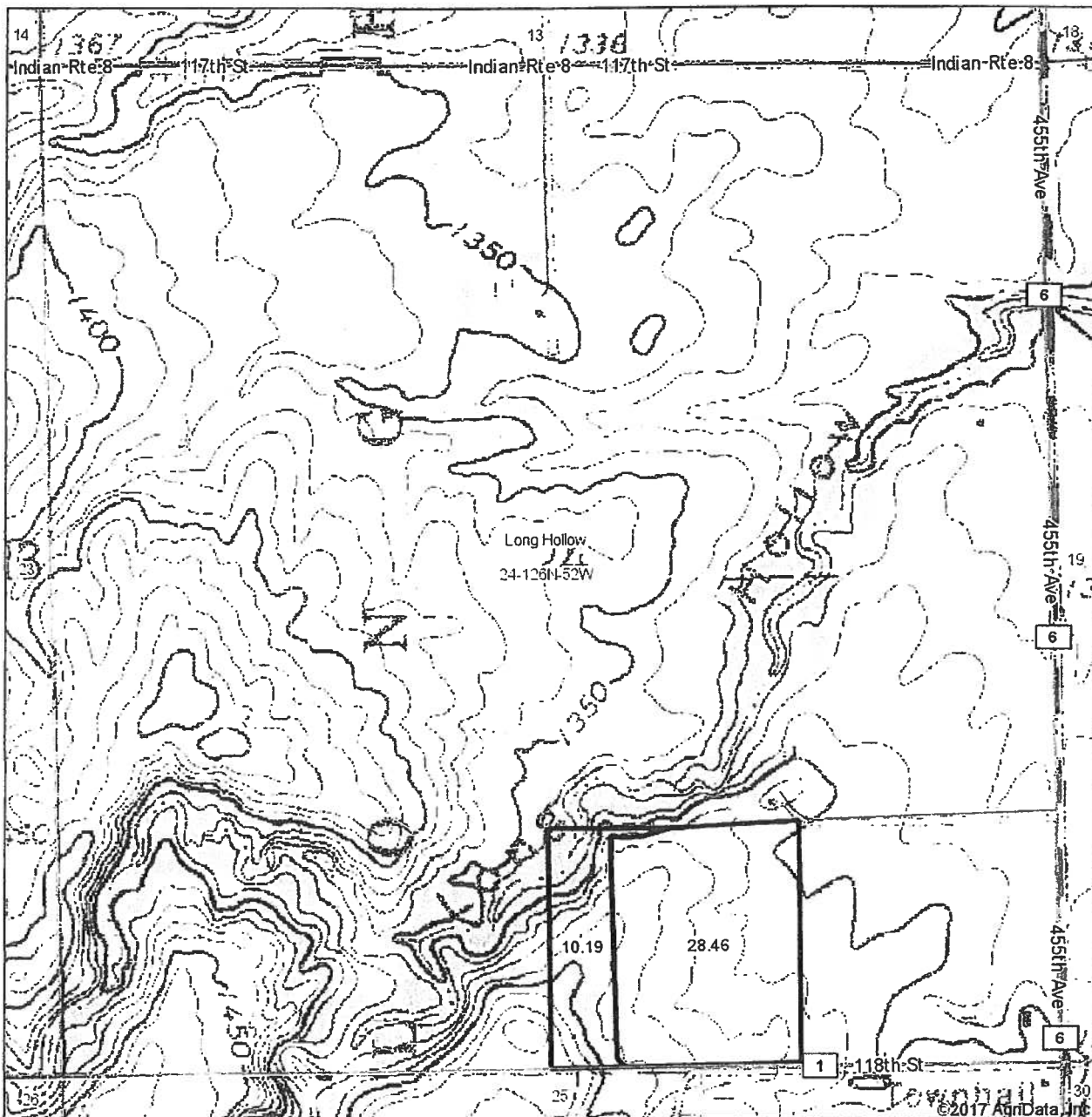
Owners: RICHARD M HERIGSTAD TEST IRR TRUS

Other Producers: None

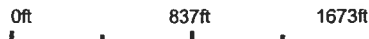
12-4-17-4
No Longer
SW. 37
S. 12-17-19
T-3880

T-3880

Topography Map



map center: 45° 40' 53.96, -97° 6' 47.19



24-126N-52W
Roberts County
South Dakota



4/7/2017

Field borders provided by Farm Service Agency as of 5/21/2008.