

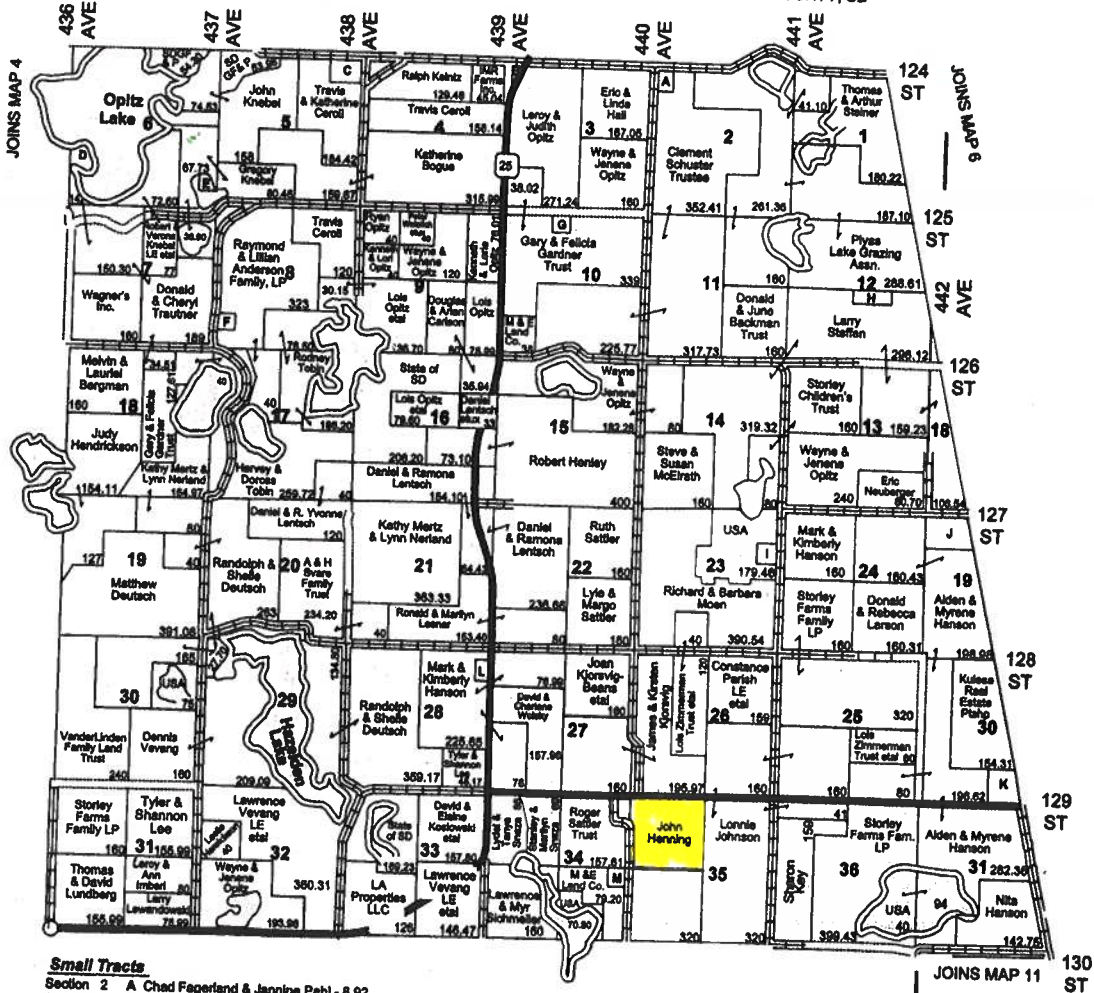
NUTLEY TWP

T 124 N

R 55 & 54 W

JOINS MARSHALL COUNTY, SD

DAY COUNTY LAND OWNER & RURAL RESIDENT MAPS



Small Tracts

- Section 2 A Chad Fagerland & Jernine Pahl - 8.02
- Section 3 B St. Michael's Cemetery - 5
- Section 6 C Jody Keintz - 28.79
- Section 6 D Donald & Cheryl Trautner - 13.62
- Section 6 E Gary Knebel - 12.27
- Section 6 F Day County 9.71
- Section 10 G Darrell & Lois Vig - 13.80
- Section 12 H Charlee & Ellen Clark - 20
- Section 23 I Richard & Barbara Moen - 30
- Section 19E J Kelly & Ashley Hanson - 46.88
- Section 30E K Mark & Kimberly Hanson - 28.62
- Section 28 L Thomas Adams - 5
- Section 34 M Donald & Jeanette Smeza - 10

R 59 W						R 58 W						R 57 W						R 56 W						R 55 W						R 54 W					
MAP 1 FARMINGTON	MAP 2 HOMER	MAP 3 INDEPENDENCE	MAP 4 LIBERTY	MAP 5 NUTLEY	MAP 6 ROSCOE																														
UNION						LYNN						MANTAN						GREENVILLE																	
MAP 7 ANDOVER	MAP 8 BRISTOL	MAP 9 KODOR	MAP 10 WEBSTER	MAP 11 SACON	MAP 12 WARWAY																														
SCOTLAND						VALLEY						BUTLER						BLISS																	
MAP 13 ONE BILCOI	MAP 14 TROY	MAP 15 YORK	MAP 16 HIGHLAND	MAP 17 WHEATLAND	MAP 18 OSBORN																														
T 124 N						T 123 N						T 122 N						T 121 N						T 120 N											

TRACT 2

Aerial Map



Map Center: 45° 30' 28.37, -97° 23' 47.91



35-124N-55W
Day County
South Dakota



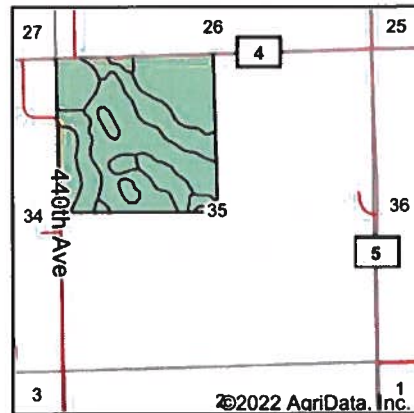
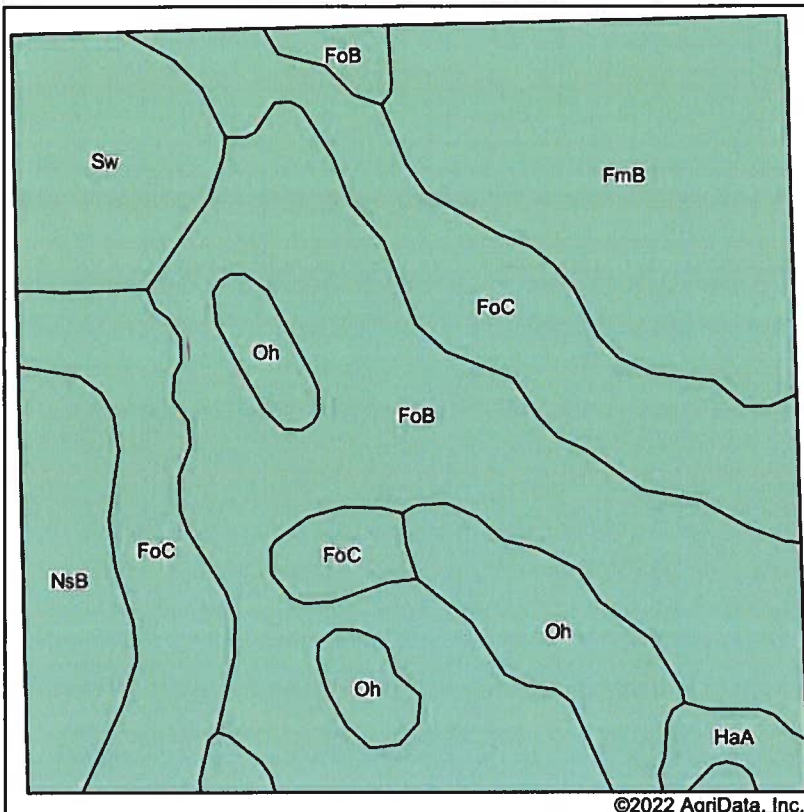
Maps Provided By

 CUSTOMIZED ONLINE MAPPING
 © AgriData, Inc. 2021 www.AgriDataInc.com

Field borders provided by Farm Service Agency as of 5/21/2008.

TRACT 2

Soils Map



State: **South Dakota**
 County: **Day**
 Location: **35-124N-55W**
 Township: **Nutley**
 Acres:
 Date: **8/5/2022**



Soils data provided by USDA and NRCS.

©2022 AgriData, Inc.

Area Symbol: SD037, Soil Area Version: 27

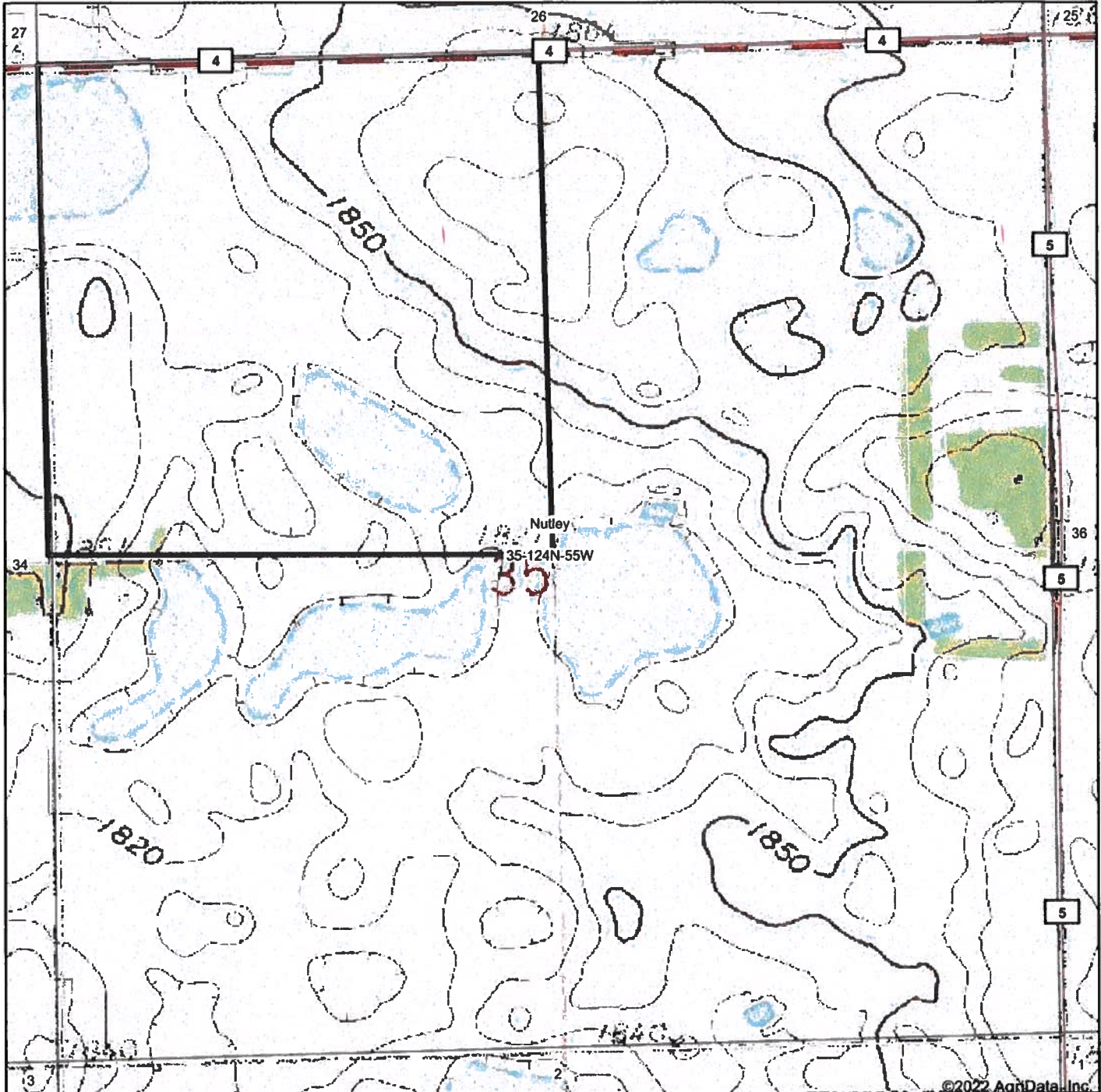
Code	Soil Description	Acres	Percent of field	Non-Irr Class *c	Productivity Index	Corn Bu	Soybeans Bu	*n NCCPI Soybeans
FoB	Forman-Buse-Aastad loams, 1 to 6 percent slopes	52.84	33.2%	Ile	79	64	23	56
FoC	Forman-Buse-Aastad loams, 2 to 9 percent slopes	36.05	22.6%	IIle	65	54	20	54
FmB	Forman-Aastad loams, 1 to 6 percent slopes	30.36	19.1%	Ile	84	70	26	56
Oh	Oldham silty clay loam	14.93	9.4%	Vw	30	25	8	21
Sw	Southam silty clay loam, 0 to 1 percent slopes	12.29	7.7%	VIIIw	10			9
NsB	Nutley-Sinai silty clays, 2 to 6 percent slopes	10.29	6.5%	IIle	66	56	20	43
HaA	Hamerly loam, 0 to 2 percent slopes	2.61	1.6%	IIs	73	66	21	51
Weighted Average				3.03	65.9	53.8	19.5	*n 47.7

*n: The aggregation method is "Weighted Average using all components"
 *c: Using Capabilities Class Dominant Condition Aggregation Method

Soils data provided by USDA and NRCS.

TRACT 2

Topography Map



map center: 45° 30' 28.37, -97° 23' 47.91

0ft 823ft 1645ft

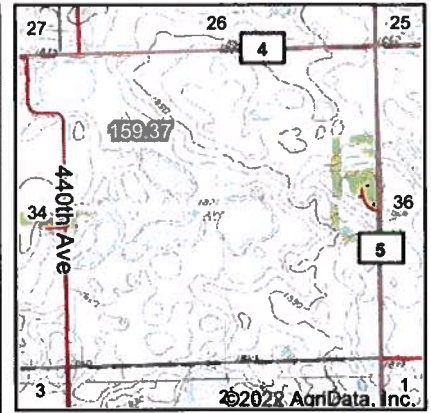
35-124N-55W
Day County
South Dakota



Field borders provided by Farm Service Agency as of 5/21/2008.

TRACT 2

Wetlands Map



State: South Dakota
Location: 35-124N-55W
County: Day
Township: Nutley
Date: 8/5/2022

Maps Provided By



© AgriData, Inc 2021



Classification Code	Type	Acres
PEM1F	Freshwater Emergent Wetland	13.41
PEM1A	Freshwater Emergent Wetland	4.36
PEM1/ABF	Freshwater Emergent Wetland	3.11
Total Acres		20.88

Data Source: National Wetlands Inventory website. U.S. DoI, Fish and Wildlife Service, Washington, D.C. <http://www.fws.gov/wetlands/>

Field borders provided by Farm Service Agency as of 5/21/2008.

TRACT 2

LAND AREA:

Cropland:	47.8	Acres
CRP:	110.5	Acres
Pasture/NC:	0.5	Acres
Road and waste:	1.2	Acres
Total:	160.0	Acres

IMPROVEMENTS: There are no improvements on this Tract.

SOILS INFORMATION:

Soil rating: .581

LAND CLASS:	SYM:	DESC:	Soil Rating	% SLOPE:	AC.
IIe	FoB	Forman-Buse-Aastad loams	.774	1 - 6	89
IIs	HaA	Hamerly loam	.693	0 - 2	4
IIIe	FoC	Forman-Buse-Aastad loams	.675	2 - 9	8
Vw	Oh	Oldham silty clay loam	.328	0 - 1	28
Vw	Pa	Parnell silty clay loam	.377	0 - 1	12
VIe	BnD	Buse-Barnes loams	.248	9 - 20	5
VIIIw	Sw	Southam silty clay loam	.100	0 - 1	15

**Class 2: 93 Ac (58%), Class 3: 8 Ac (5%), Class 5: 40 Ac (25%),
Class 8: 15 Ac (9%)**

The main soil types on this tract are Class 2 Forman-Buse-Aastad loams. These are good producing soils on 1% to 6% slopes. There are smaller amounts of Class 2 Hamerly loam, Class 3 Forman-Buse-Aastad loams, Class 5 Oldham silty clay loam, Parnell silty clay loam, Class 6 Buse-Barnes loams and Class 8 Southam silty clay loam.

Due to computer rounding some numbers may vary slightly.

TRACT 2

Nutley Township - Section 35 - T124N - R55W



Taken from NW corner looking south.



Taken from NW corner looking SE.



Taken from NW corner looking east.



Taken from SW corner looking north.



Taken from SW corner looking NE.



Taken from SW corner looking east.

TRACT 2