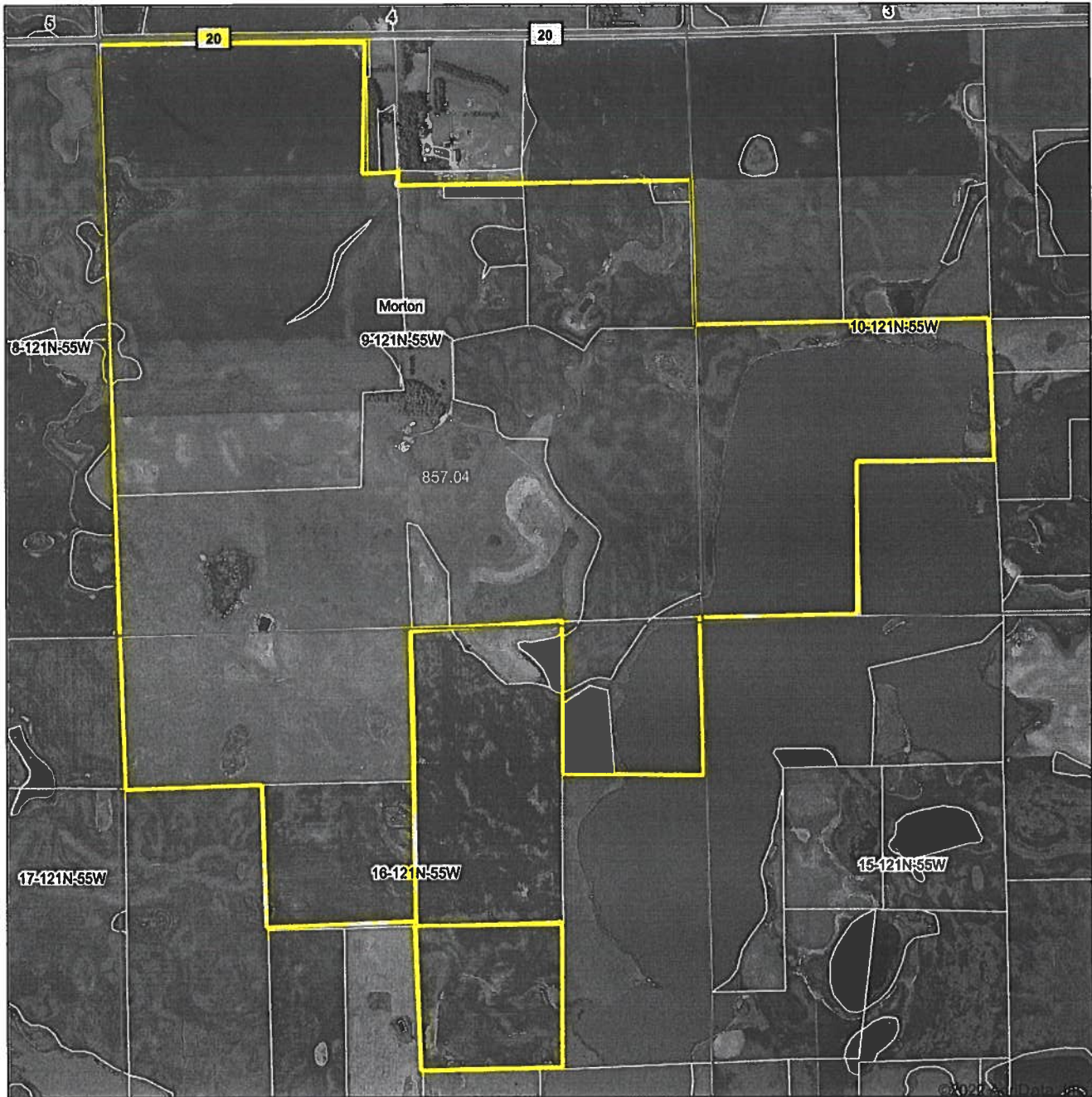


Aerial Map



Map Center: 45° 17' 57.21, -97° 25' 59.04

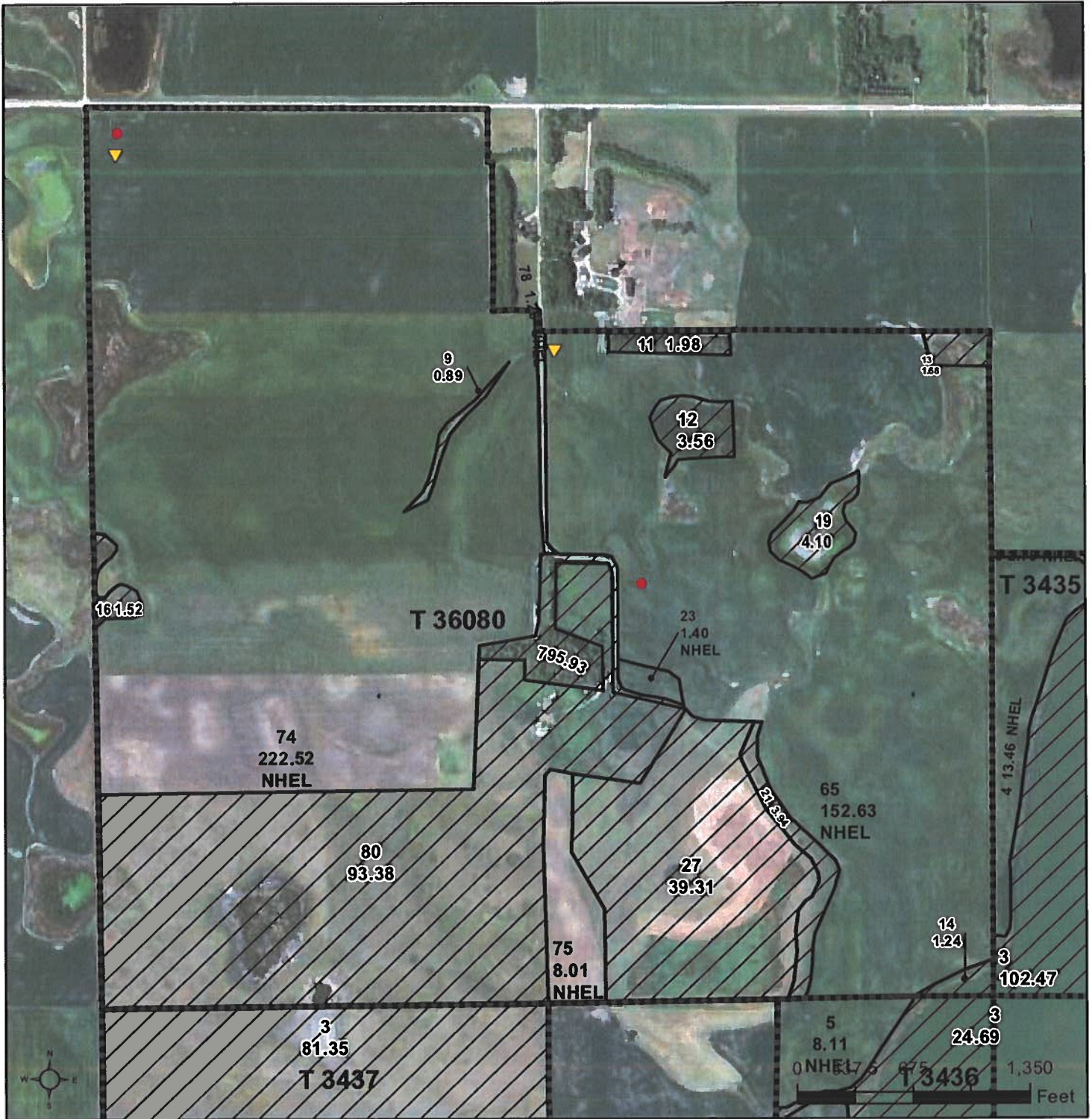
0ft 1386ft 2772ft

9-121N-55W
Day County
South Dakota



Maps Provided By:
surety
CUSTOMIZED ONLINE MAPPING
© AgriData, Inc. 2021 www.AgrDataInc.com

Field borders provided by Farm Service Agency as of 5/21/2008.



Common Land Unit Tract Boundary
 Non-Cropland PLSS
 Cropland

Wetland Determination Identifiers
 Restricted Use
 Limited Restrictions
 Exempt from Conservation Compliance Provisions

Unless otherwise noted, crops listed below are:
 Non-irrigated intended for Grain
 Corn = Yellow
 Soybeans = Common
 Wheat - HRS or HRW
 Sunflowers = Oil or Non-oil

Producer Initial _____
 Date _____

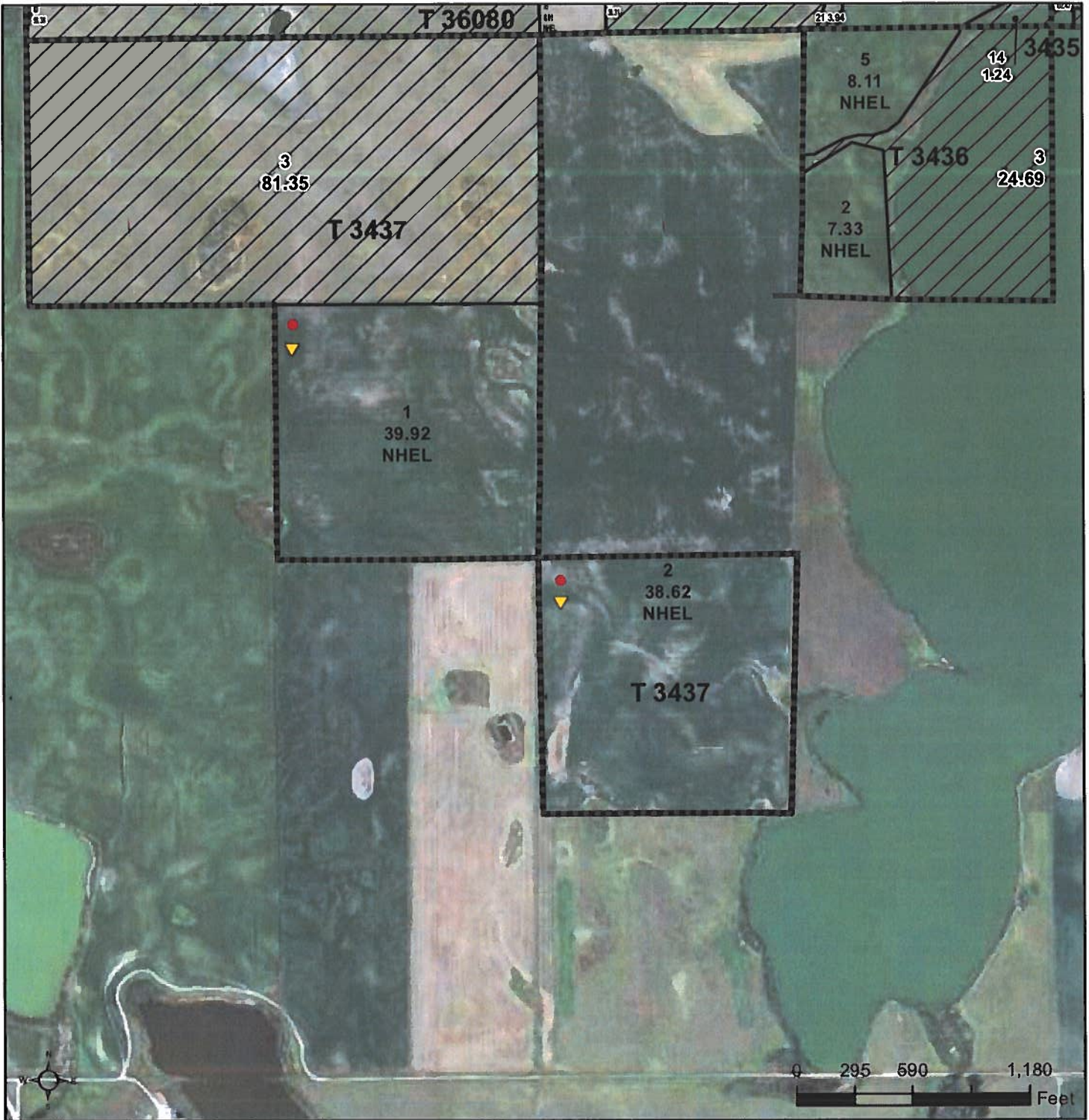
2022 Program Year

Map Created June 08, 2022

Farm 6853

9-121N-55W-Day

United States Department of Agriculture (USDA) Farm Service Agency (FSA) maps are for FSA Program administration only. This map does not represent a legal survey or reflect actual ownership; rather it depicts the information provided directly from the producer and/or National Agricultural Imagery Program (NAIP) imagery. The producer accepts the data 'as is' and assumes all risks associated with its use. USDA-FSA assumes no responsibility for actual or consequential damage incurred as a result of any user's reliance on this data outside FSA Programs. Wetland identifiers do not represent the size, shape, or specific determination of the area. Refer to your original determination (CPA-026 and attached maps) for exact boundaries and determinations or contact USDA Natural Resources Conservation Service (NRCS).



Common Land Unit Tract Boundary
 Non-Cropland
 Cropland
 PLSS

Wetland Determination Identifiers
 Restricted Use
 Limited Restrictions
 Exempt from Conservation Compliance Provisions

Unless otherwise noted, crops listed below are:
 Non-irrigated Intended for Grain
 Corn = Yellow
 Soybeans = Common
 Wheat - HRS or HRW
 Sunflowers = Oil or Non-oil

Producer initial _____
 Date _____

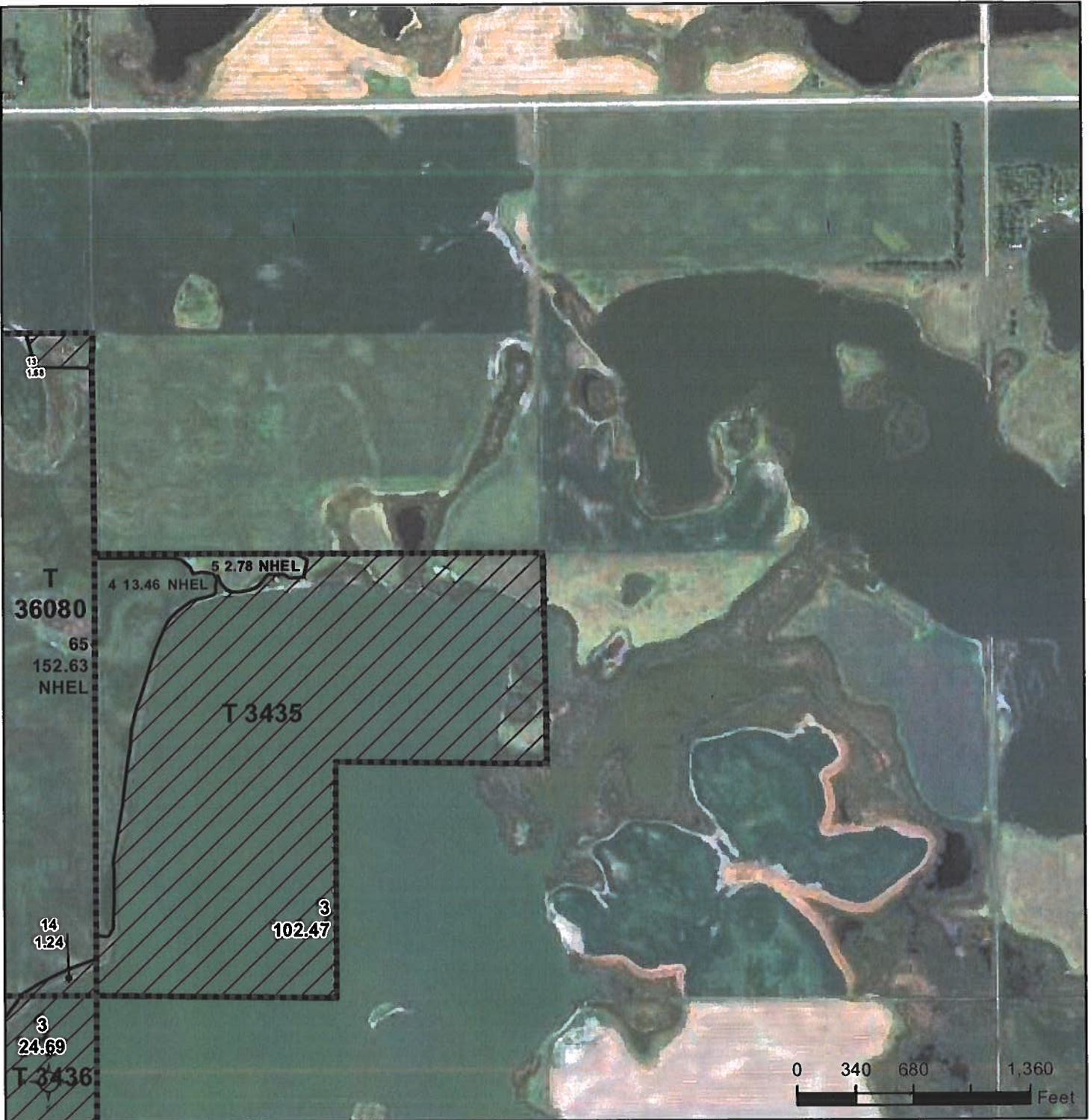
2022 Program Year

Map Created June 08, 2022

Farm 6853

16-121N-55W-Day

United States Department of Agriculture (USDA) Farm Service Agency (FSA) maps are for FSA Program administration only. This map does not represent a legal survey or reflect actual ownership; rather it depicts the information provided directly from the producer and/or National Agricultural Imagery Program (NAIP) imagery. The producer accepts the data 'as is' and assumes all risks associated with its use. USDA-FSA assumes no responsibility for actual or consequential damage incurred as a result of any user's reliance on this data outside FSA Programs. Wetland identifiers do not represent the size, shape, or specific determination of the area. Refer to your original determination (CPA-026 and attached maps) for exact boundaries and determinations or contact USDA Natural Resources Conservation Service (NRCS).



Common Land Unit Tract Boundary
 PLSS
 Non-Cropland
 Cropland

Wetland Determination Identifiers
 Restricted Use
 Limited Restrictions
 Exempt from Conservation Compliance Provisions

Unless otherwise noted, crops listed below are:
 Non-Irrigated Intended for Grain _____
 Corn = Yellow _____
 Soybeans = Common _____
 Wheat - HRS or HRW _____
 Sunflowers = Oil or Non-oil _____
 Producer initial _____
 Date _____

2022 Program Year

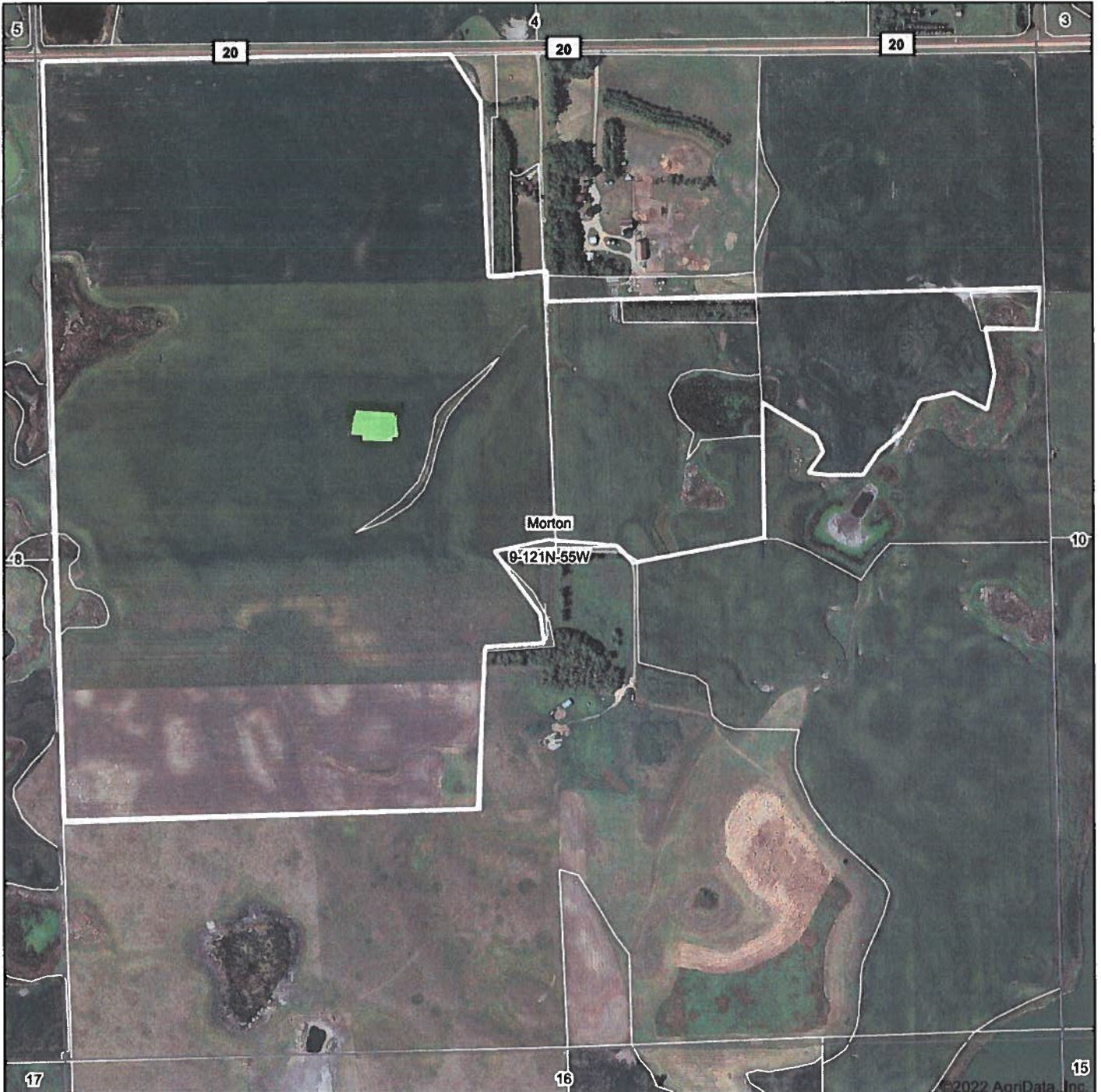
Map Created June 08, 2022

Farm 6853

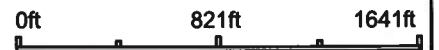
10-121N-55W-Day

United States Department of Agriculture (USDA) Farm Service Agency (FSA) maps are for FSA Program administration only. This map does not represent a legal survey or reflect actual ownership; rather it depicts the information provided directly from the producer and/or National Agricultural Imagery Program (NAIP) imagery. The producer accepts the data 'as is' and assumes all risks associated with its use. USDA-FSA assumes no responsibility for actual or consequential damage incurred as a result of any user's reliance on this data outside FSA Programs. Wetland identifiers do not represent the size, shape, or specific determination of the area. Refer to your original determination (CPA-026 and attached maps) for exact boundaries and determinations or contact USDA Natural Resources Conservation Service (NRCS).

Aerial Map



Map Center: 45° 18' 16.71, -97° 26' 16.77

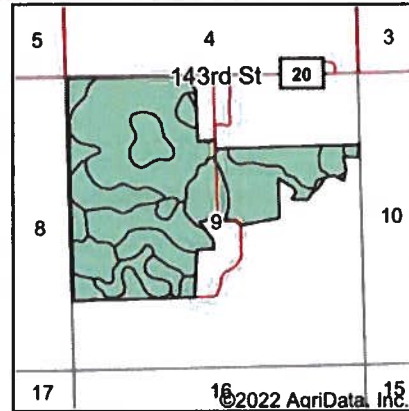
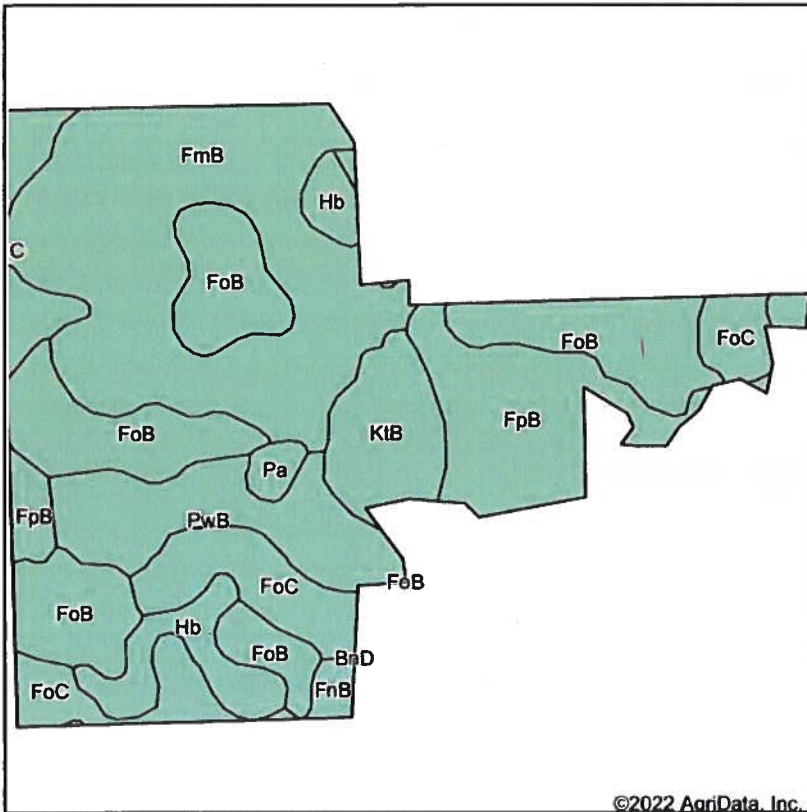


9-121N-55W
Day County
South Dakota



Field borders provided by Farm Service Agency as of 5/21/2008.

Soils Map



State: **South Dakota**
 County: **Day**
 Location: **9-121N-55W**
 Township: **Morton**
 Acres:
 Date: **8/5/2022**



Soils data provided by USDA and NRCS.

©2022 AgriData, Inc.

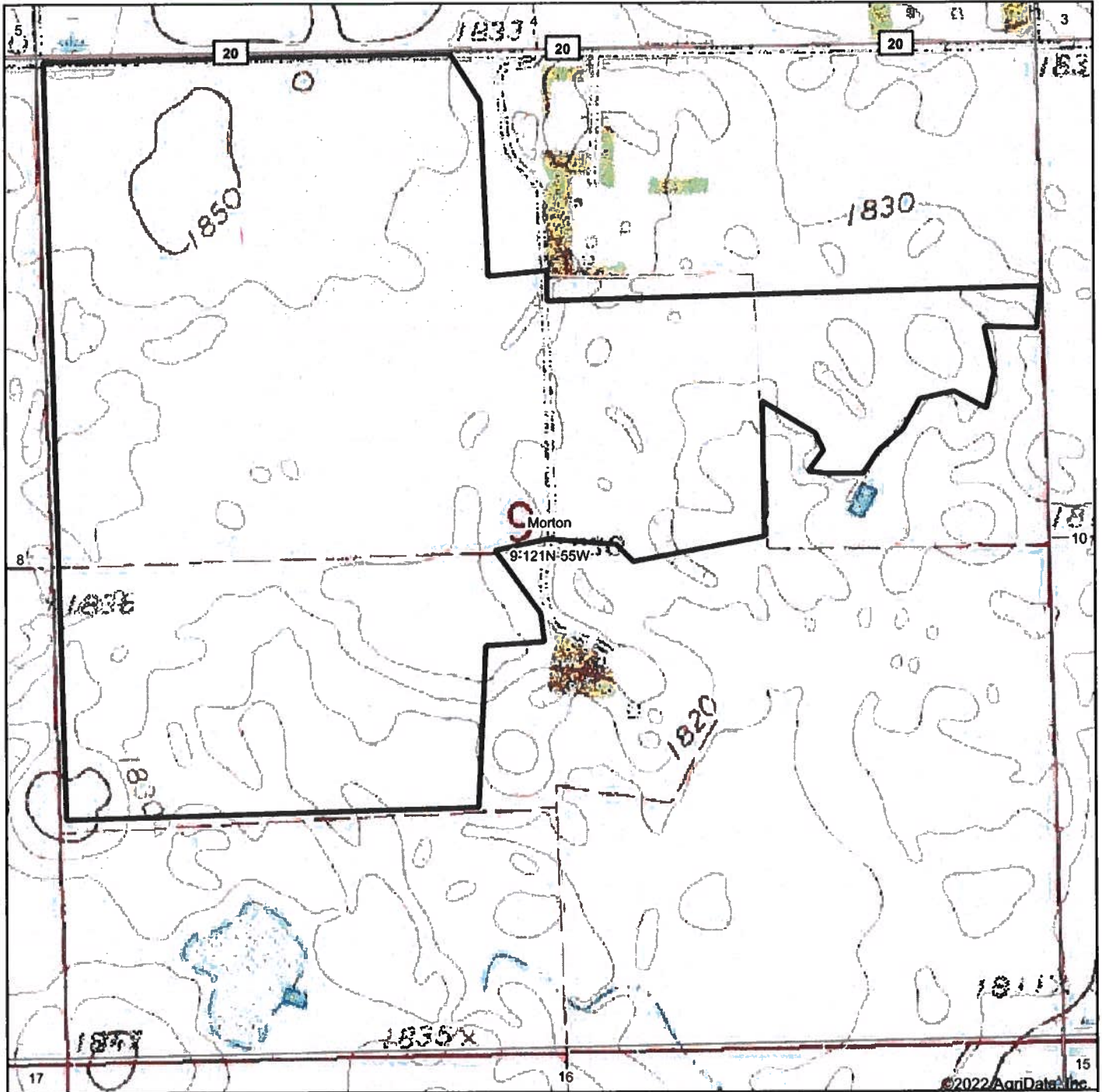
Area Symbol: SD037, Soil Area Version: 27

Code	Soil Description	Acres	Percent of field	Non-Irr Class *c	Productivity Index	Corn Bu	Soybeans Bu	*n NCCPI Soybeans
FmB	Forman-Aastad loams, 1 to 6 percent slopes	80.49	29.2%	Ile	84	70	26	56
FoB	Forman-Buse-Aastad loams, 1 to 6 percent slopes	67.43	24.5%	Ile	79	64	23	56
FpB	Forman-Buse-Parnell complex, 0 to 6 percent slopes	37.36	13.6%	Ile	66	52	19	46
FoC	Forman-Buse-Aastad loams, 2 to 9 percent slopes	29.14	10.6%	IIle	65	54	20	54
PwB	Poinsett-Waubay silty clay loams, 1 to 6 percent slopes	25.29	9.2%	Ile	89			73
KtB	Kranzburg-Forman complex, 2 to 6 percent slopes	15.73	5.7%	Ile	83	68	26	60
Hb	Hamerly-Parnell complex	15.11	5.5%	IIs	52	48	16	33
Pa	Parnell silty clay loam	2.60	0.9%	Vw	34	25	9	8
FnB	Forman-Aastad-Parnell complex, 0 to 6 percent slopes	2.36	0.9%	Ile	73	60	23	46
Weighted Average				2.13	76.4	56.1	20.6	*n 54.4

*n: The aggregation method is "Weighted Average using all components"
 *c: Using Capabilities Class Dominant Condition Aggregation Method

Soils data provided by USDA and NRCS.

Topography Map



map center: 45° 18' 16.71, -97° 26' 16.77



9-121N-55W
Day County
South Dakota

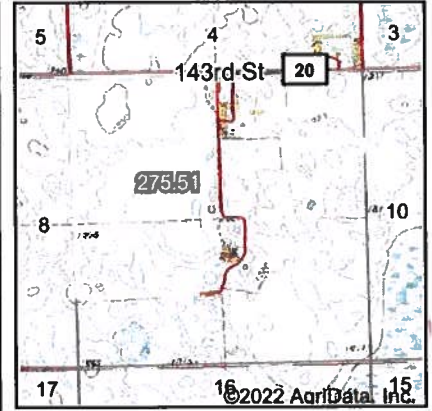
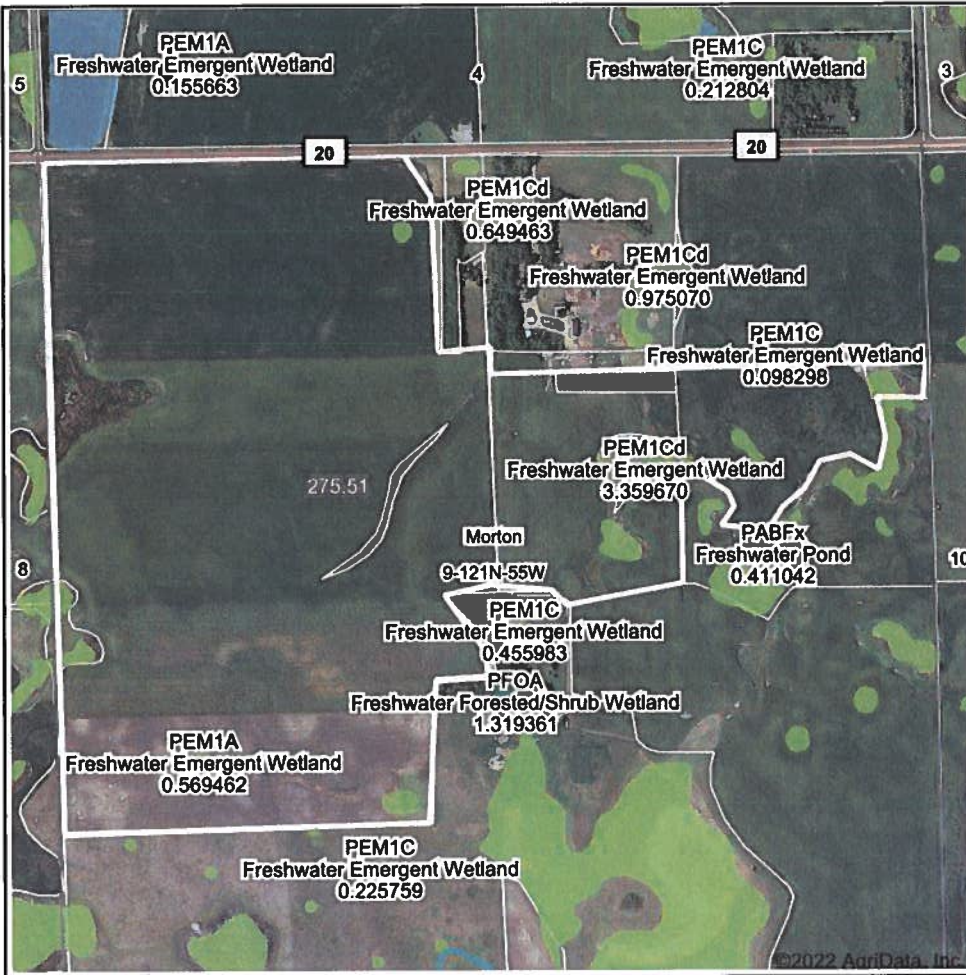


8/5/2022



Field borders provided by Farm Service Agency as of 5/21/2008.

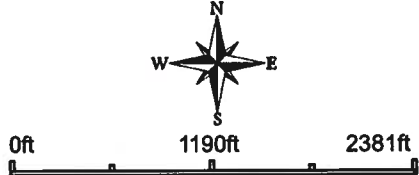
Wetlands Map



State: **South Dakota**
 Location: **9-121N-55W**
 County: **Day**
 Township: **Morton**
 Date: **8/5/2022**

Maps Provided By

 CUSTOMIZED ONLINE MAPPING
 © AgriData, Inc. 2021 www.AgrDataInc.com



Classification Code	Type	Acres
PEM1Cd	Freshwater Emergent Wetland	3.17
PEM1C	Freshwater Emergent Wetland	2.20
PEM1Ch	Freshwater Emergent Wetland	0.96
PEM1A	Freshwater Emergent Wetland	0.83
PEM1Ad	Freshwater Emergent Wetland	0.60
	Total Acres	7.76

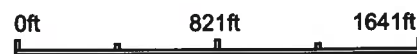
Data Source: National Wetlands Inventory website. U.S. DoI, Fish and Wildlife Service, Washington, D.C. <http://www.fws.gov/wetlands/>

Field borders provided by Farm Service Agency as of 5/21/2008.

Aerial Map



Map Center: 45° 18' 16.71, -97° 26' 16.77



9-121N-55W
Day County
South Dakota

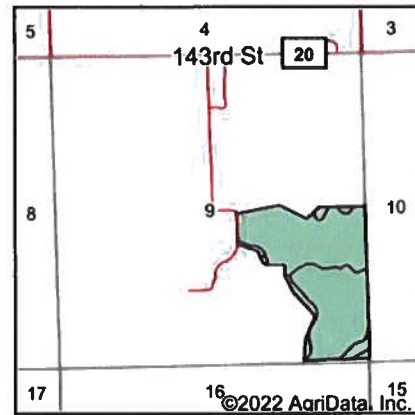
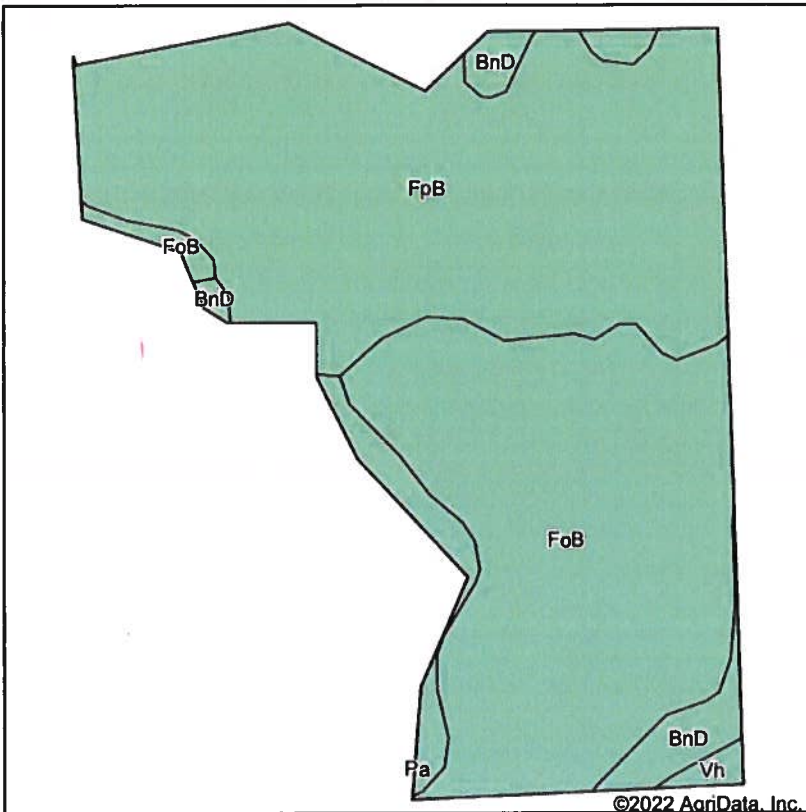


Maps Provided By

 CUSTOMIZED ONLINE MAPPING
 © AgriData, Inc. 2021 www.AgnDataInc.com

Field borders provided by Farm Service Agency as of 5/21/2008.

Soils Map



State: **South Dakota**
 County: **Day**
 Location: **9-121N-55W**
 Township: **Morton**
 Acres:
 Date: **8/2/2022**

Maps Provided By



Soils data provided by USDA and NRCS.

Area Symbol: SD037, Soil Area Version: 27

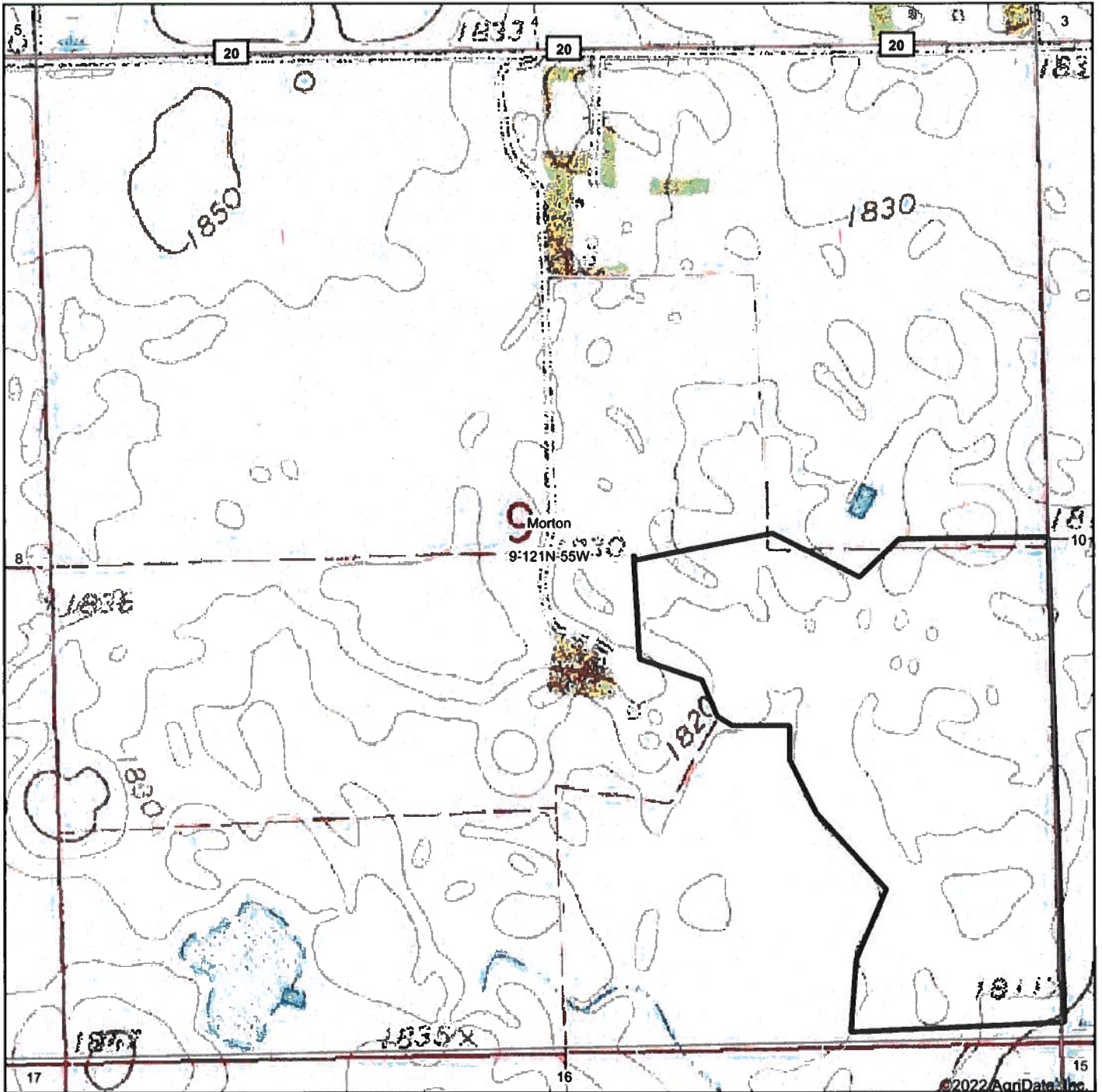
Code	Soil Description	Acres	Percent of field	Non-Irr Class *c	Productivity Index	Com Bu	Soybeans Bu	*n NCCPI Soybeans
FpB	Forman-Buse-Parnell complex, 0 to 6 percent slopes	44.29	51.1%	Ile	66	52	19	46
FoB	Forman-Buse-Aastad loams, 1 to 6 percent slopes	35.45	40.9%	Ile	79	64	23	56
BnD	Buse-Barnes loams, 9 to 20 percent slopes	3.72	4.3%	Vle	34	33	12	48
Pa	Parnell silty clay loam	2.64	3.0%	Vw	34	25	9	8
Vh	Vallers-Hamerly loams	0.56	0.6%	IVw	57	50	16	56
Weighted Average				2.28	68.9	55.3	20	*n 49.1

*n: The aggregation method is "Weighted Average using all components"

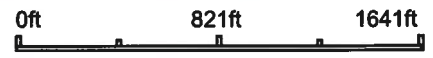
*c: Using Capabilities Class Dominant Condition Aggregation Method

Soils data provided by USDA and NRCS.

Topography Map



map center: 45° 18' 16.71, -97° 26' 16.77



9-121N-55W
Day County
South Dakota

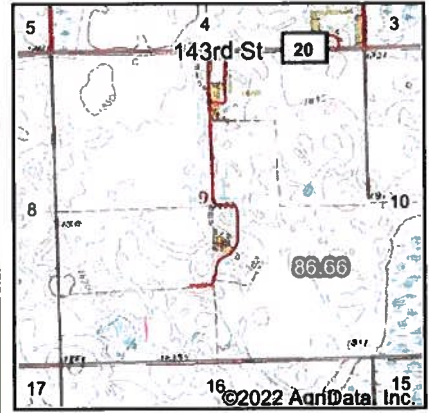


8/2/2022



Field borders provided by Farm Service Agency as of 5/21/2008.

Wetlands Map



State: **South Dakota**
 Location: **9-121N-55W**
 County: **Day**
 Township: **Morton**
 Date: **8/2/2022**

Maps Provided By

 CUSTOMIZED ONLINE MAPPING
 © AgriData, Inc. 2021 www.AgriDataInc.com



0ft 675ft 1349ft

Classification Code	Type	Acres
PEM1C	Freshwater Emergent Wetland	1.36
PEM1A	Freshwater Emergent Wetland	0.83
PEM1Cd	Freshwater Emergent Wetland	0.23
PEM1/ABF	Freshwater Emergent Wetland	0.01
Total Acres		2.43

Data Source: National Wetlands Inventory website. U.S. DoI, Fish and Wildlife Service, Washington, D.C. <http://www.fws.gov/wetlands/>

Field borders provided by Farm Service Agency as of 5/21/2008.

Aerial Map



Map Center: 45° 17' 24.64, -97° 26' 16.77



16-121N-55W
Day County
South Dakota

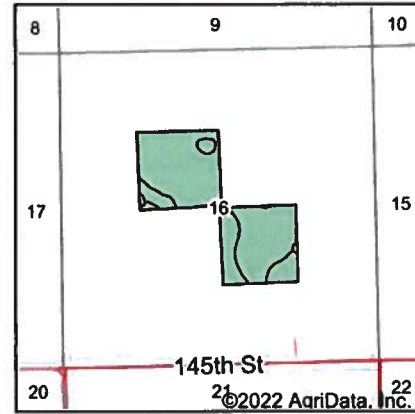
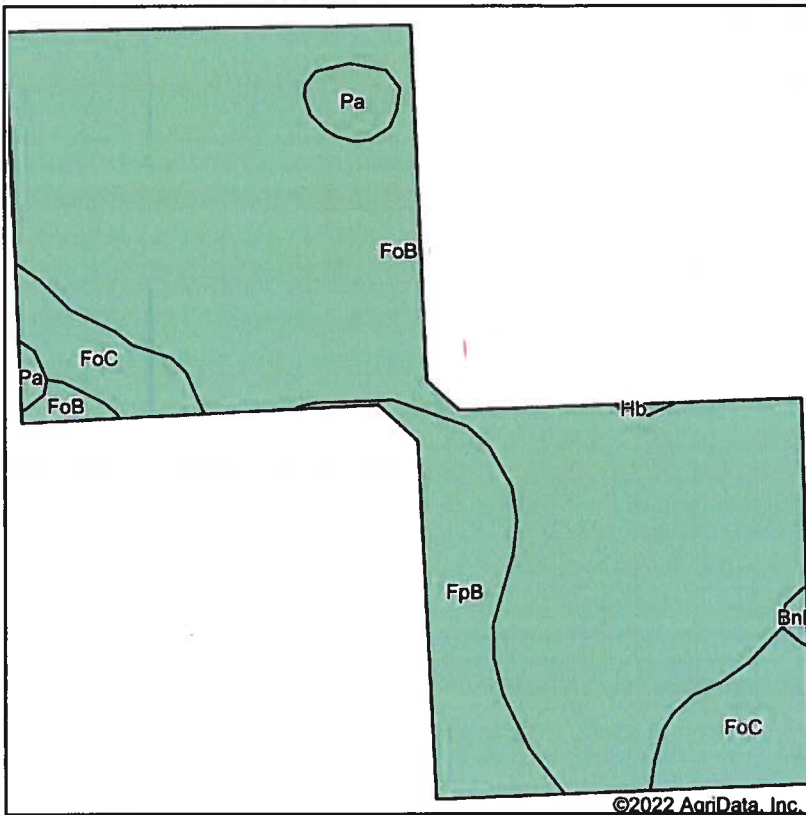


Maps Provided By

 CUSTOMIZED ONLINE MAPPING
 © AgriData, Inc. 2021 www.AgriDataInc.com

Field borders provided by Farm Service Agency as of 5/21/2008.

Soils Map



State: **South Dakota**
 County: **Day**
 Location: **16-121N-55W**
 Township: **Morton**
 Acres:
 Date: **8/2/2022**



Soils data provided by USDA and NRCS.

Area Symbol: SD037, Soil Area Version: 27

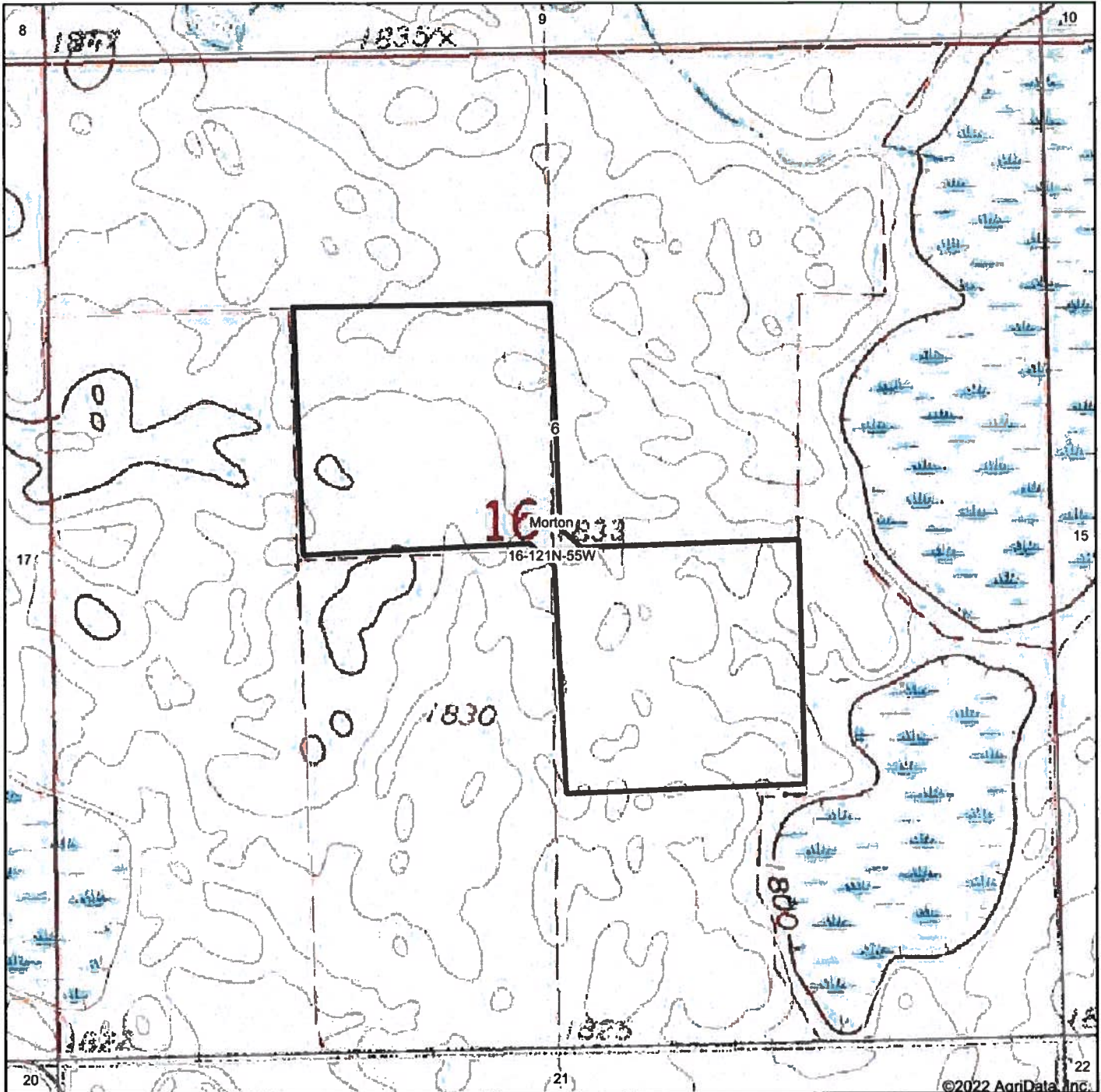
Code	Soil Description	Acres	Percent of field	Non-Irr Class *c	Productivity Index	Corn Bu	Soybeans Bu	*n NCCPI Soybeans	
FoB	Forman-Buse-Aastad loams, 1 to 6 percent slopes	59.66	76.6%	Ile	79	64	23	56	
FpB	Forman-Buse-Parnell complex, 0 to 6 percent slopes	8.34	10.7%	Ile	66	52	19	46	
FoC	Forman-Buse-Aastad loams, 2 to 9 percent slopes	7.72	9.9%	IIle	65	54	20	54	
Pa	Parnell silty clay loam	1.79	2.3%	Vw	34	25	9	8	
BnD	Buse-Barnes loams, 9 to 20 percent slopes	0.25	0.3%	VIle	34	33	12	48	
Hb	Hamery-Parnell complex	0.10	0.1%	IIls	52	48	16	33	
Weighted Average				2.18		75	60.7	21.9	*n 53.6

*n: The aggregation method is "Weighted Average using all components"

*c: Using Capabilities Class Dominant Condition Aggregation Method

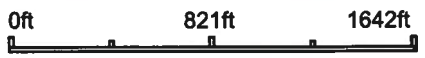
Soils data provided by USDA and NRCS.

Topography Map



©2022 AgriData, Inc.

map center: 45° 17' 24.64, -97° 26' 16.77

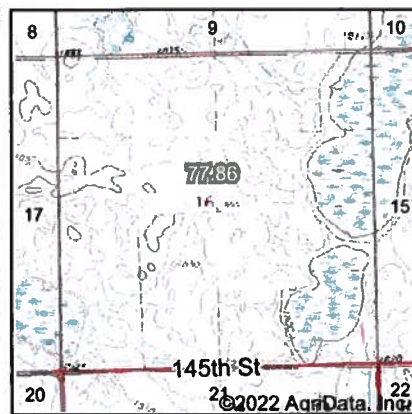
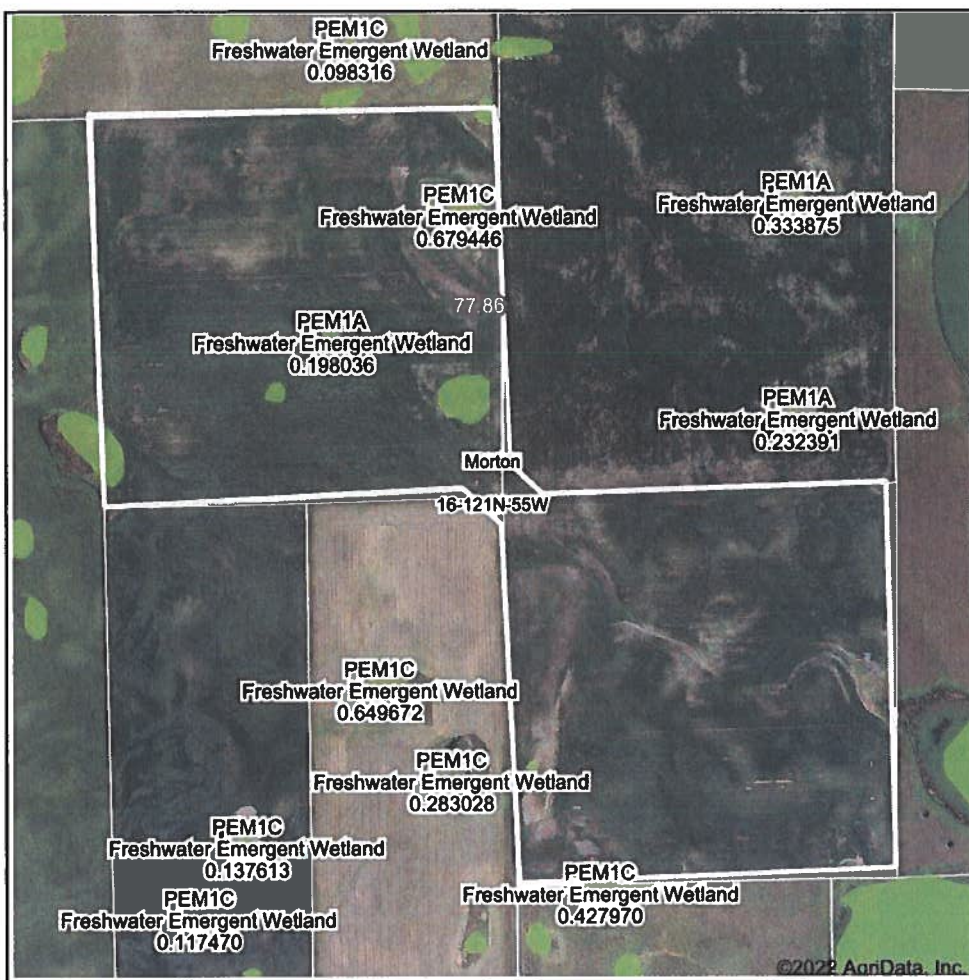


16-121N-55W
Day County
South Dakota



Field borders provided by Farm Service Agency as of 5/21/2008.

Wetlands Map



State: **South Dakota**
 Location: **16-121N-55W**
 County: **Day**
 Township: **Morton**
 Date: **8/2/2022**

Maps Provided By

 CUSTOMIZED ONLINE MAPPING
 © AgriData, Inc. 2021 www.AgriDataInc.com



Classification Code	Type	Acres
PEM1C	Freshwater Emergent Wetland	1.23
PEM1A	Freshwater Emergent Wetland	0.80
Total Acres		2.03

Data Source: National Wetlands Inventory website. U.S. DoI, Fish and Wildlife Service, Washington, D.C. <http://www.fws.gov/wetlands/>

Field borders provided by Farm Service Agency as of 5/21/2008.