

Aerial Map



Map Center: 45° 20' 53.86, -97° 22' 57.14

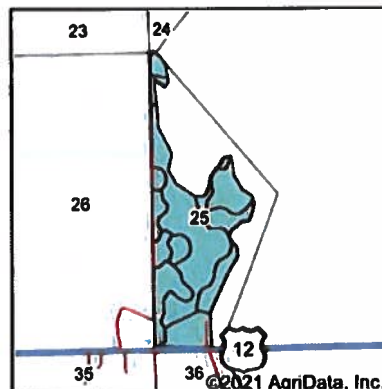
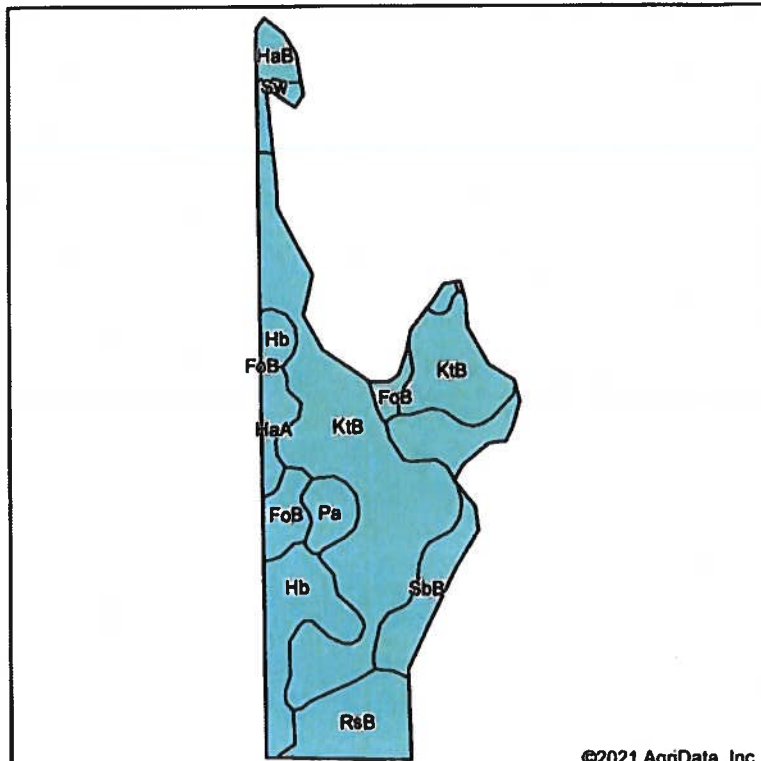


25-122N-55W
Day County
South Dakota



Field borders provided by Farm Service Agency as of 6/21/2008.

Soils Map



State: **South Dakota**
 County: **Day**
 Location: **25-122N-55W**
 Township: **Racine**
 Acres: **[REDACTED]**
 Date: **8/9/2021**



Soils data provided by USDA and NRCS.

©2021 AgriData, Inc.

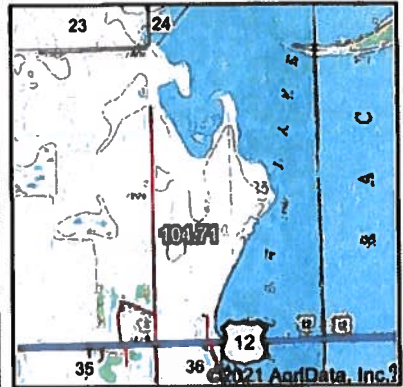
Area Symbol: SD037, Soil Area Version: 26									
Code	Soil Description	Acres	Percent of field	Non-Irr Class *c	Productivity Index	Corn	Soybeans	*n NCCPI Soybeans	
KtB	Kranzburg-Forman complex, 2 to 6 percent slopes	51.67	49.3%	Ile	83	68	26	60	
SbB	Wamduska gravelly loamy coarse sand, occasionally ponded, 2 to 6 percent slopes	13.06	12.5%	Vls	10			5	
Hb	Hamerly-Parnell complex	12.82	12.2%	Ils	52	48	16	33	
RsB	Renshaw-Sioux complex, coteau, 2 to 6 percent slopes	10.10	9.6%	IVs	34			29	
FoB	Forman-Buse-Aastad loams, 1 to 6 percent slopes	5.80	5.5%	Ile	79	64	23	56	
Pa	Parnell silty clay loam	3.69	3.5%	Vw	34	25	9	8	
HaA	Hamerly loam, 0 to 2 percent slopes	3.47	3.3%	Ils	73	66	21	51	
HaB	Hamerly loam, 2 to 6 percent slopes	2.36	2.3%	Ils	65	60	19	51	
Sw	Southam silty clay loam, 0 to 1 percent slopes	1.74	1.7%	Vlllw	10			9	
Weighted Average						61.5	47.4	17.5	*n 43.4

*n: The aggregation method is "Weighted Average using all components"

*c: Using Capabilities Class Dominant Condition Aggregation Method

Soils data provided by USDA and NRCS.

Wetlands Map



State: **South Dakota**
 Location: **25-122N-55W**
 County: **Day**
 Township: **Racine**
 Date: **8/9/2021**

Maps Provided By

 © AgrData, Inc. 2021 www.AgrDataInc.com

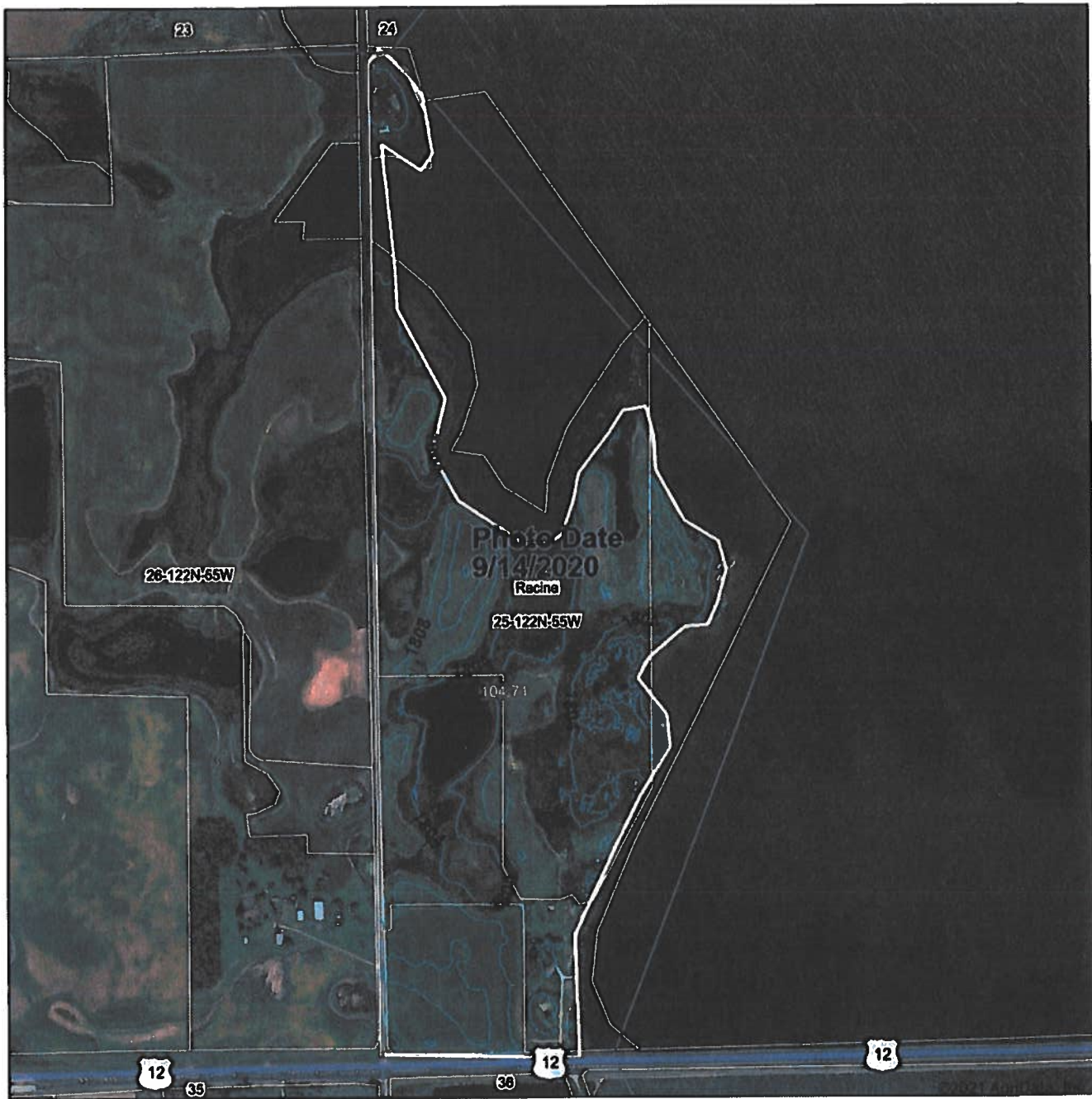


Classification Code	Type	Acres
PEM1C	Freshwater Emergent Wetland	4.55
PEM1/ABF	Freshwater Emergent Wetland	1.13
PEM1A	Freshwater Emergent Wetland	0.29
PFOA	Freshwater Forested/Shrub Wetland	0.16
Total Acres		6.13

Data Source: National Wetlands Inventory website. U.S. DoI, Fish and Wildlife Service, Washington, D.C. <http://www.fws.gov/wetlands/>

Field borders provided by Farm Service Agency as of 5/21/2008.

Topography Contours



Source: USGS 3 meter dem

Interval(ft): 4.0

Min: 1,802.6

Max: 1,816.2

Range: 13.6

Average: 1,806.2

Standard Deviation: 2.76 ft



25-122N-55W
Day County
South Dakota

8/9/2021

Map Center: 45° 20' 53.86, -97° 22' 57.14

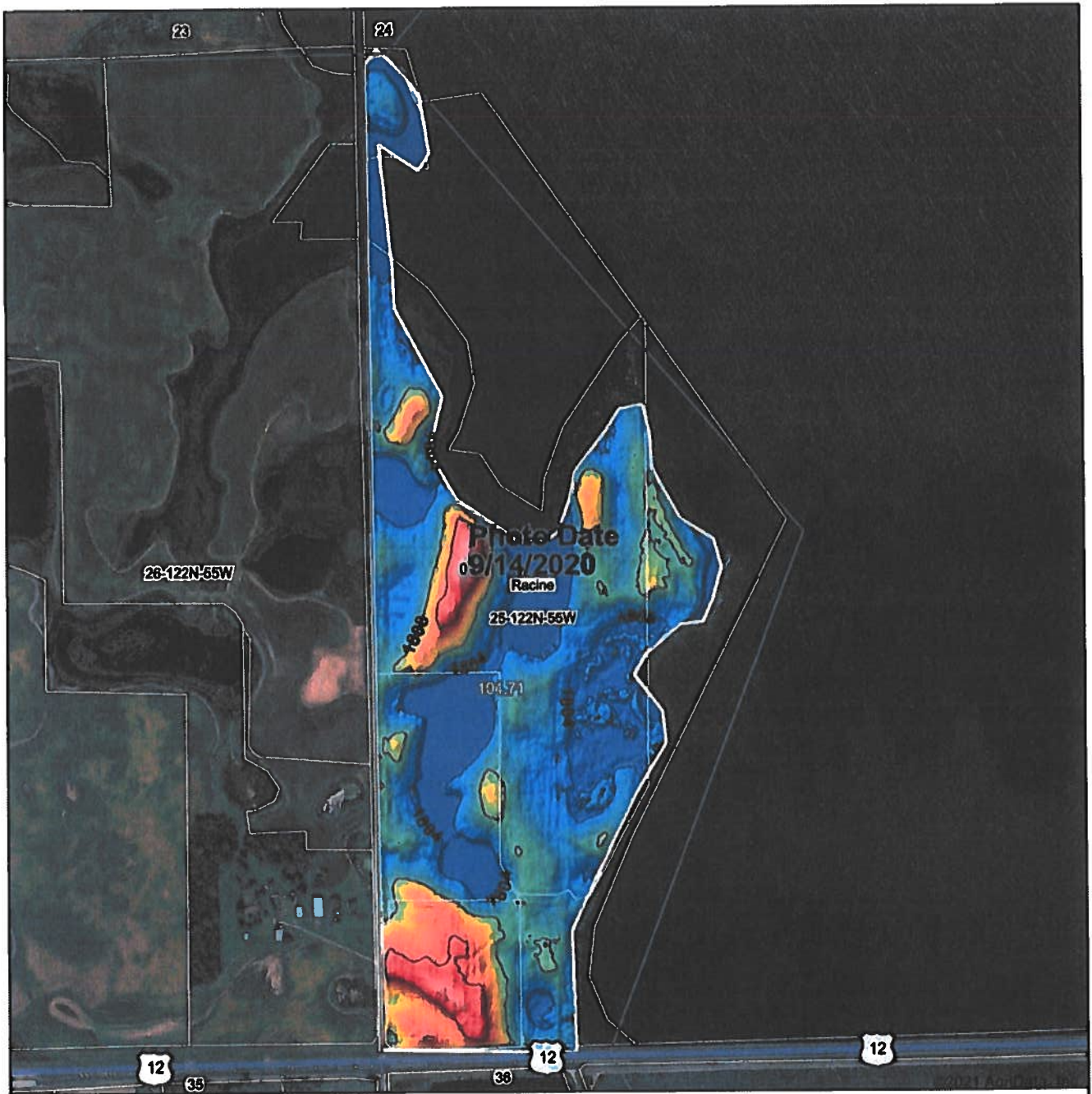
Maps Provided By



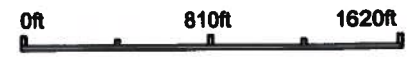
© AgriData, Inc 2021 www.AgrDataInc.com

Field borders provided by Farm Service Agency as of 5/21/2009.

Topography Hillshade



Source: USGS 3 meter dem
 Interval(ft): 4
 Min: 1,802.6
 Max: 1,816.2
 Range: 13.6
 Average: 1,806.2
 Standard Deviation: 2.76 ft



25-122N-55W
Day County
South Dakota

map center: 45° 20' 53.86, -97° 22' 57.14



© AgriData, Inc 2021 www.AgrDataInc.com
 Field borders provided by Farm Service Agency as of 5/21/2008.