



**Common Land Unit**

- Non-Cropland
- Cropland
- Tract Boundary
- PLSS

**Wetland Determination Identifiers**

- Restricted Use
- Limited Restrictions
- Exempt from Conservation Compliance Provisions

Unless otherwise noted, crops listed below are:  
**Non-irrigated Intended for Grain**  
Corn = Yellow  
Soybeans = Common  
Wheat - HRS or HRW  
Sunflowers = Oil or Non

Producer initial \_\_\_\_\_  
Date \_\_\_\_\_

**2024 Program Year**

Map Created June 12, 2024

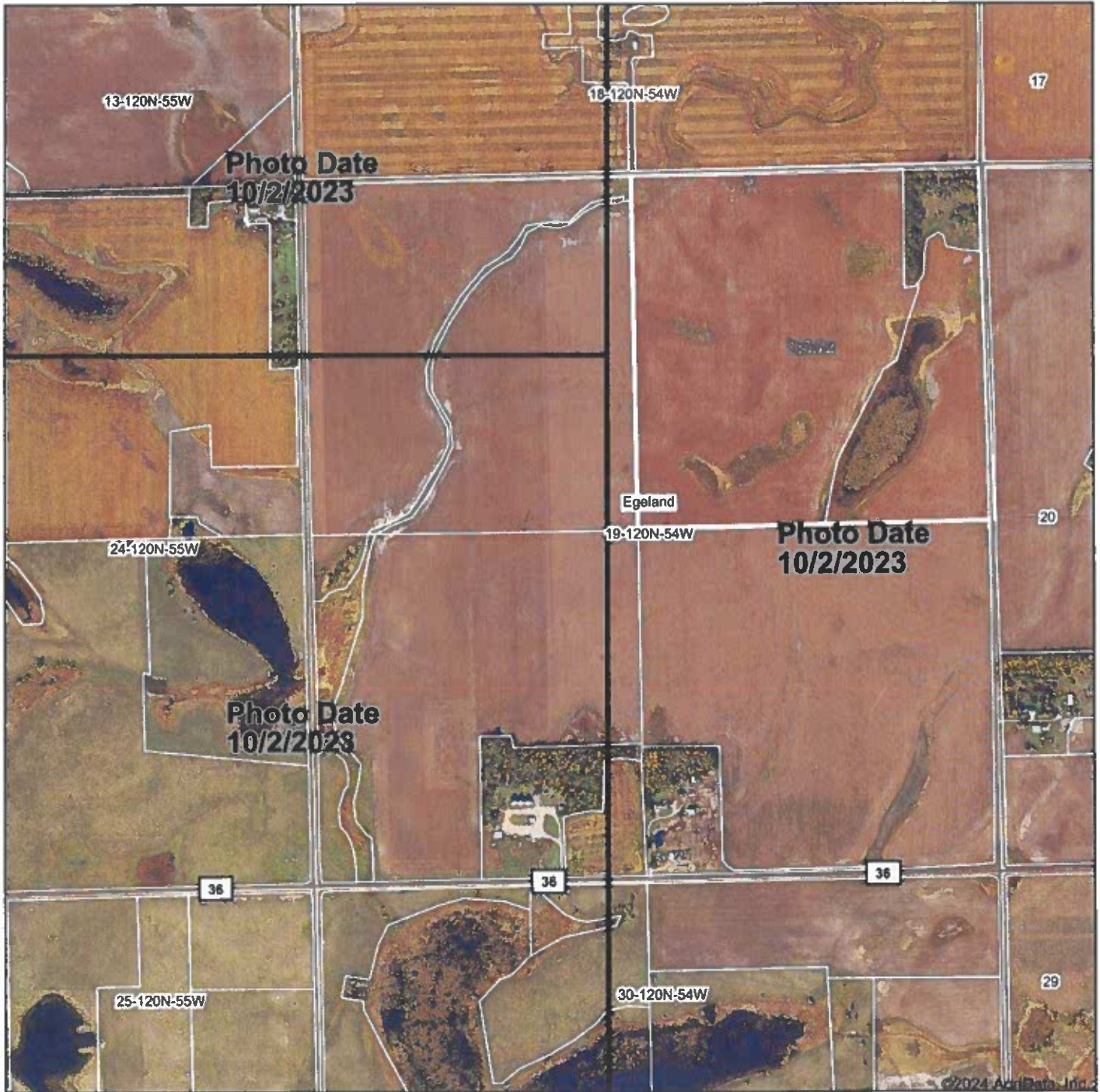
**Farm 4074**

**19-120N-54W-Day**

United States Department of Agriculture (USDA) Farm Service Agency (FSA) maps are for FSA Program administration only. This map does not represent a legal survey or reflect actual ownership; rather it depicts the information provided directly from the producer and/or National Agricultural Imagery Program (NAIP) imagery. The producer accepts the data 'as is' and assumes all risks associated with its use. USDA-FSA assumes no liability for user's reliance on this data outside FSA Programs. Wetland identifiers do not represent the size, boundaries and determinations or contact USDA Natural Resources Service (NRS) for exact details (N-026 and attached maps) for exact details.

# TRACT 2

# Aerial Map



Boundary Center: 45° 11' 30.24, -97° 21' 23.73



**19-120N-54W**  
**Day County**  
**South Dakota**



7/11/2024

Maps Provided By:  
  
 CUSTOMIZED ONLINE MAPPING  
 © AgriData, Inc. 2023 www.AgriDataInc.com

Field borders provided by Farm Service Agency as of 5/21/2008.

# TRACT 2



Day County, South Dakota



**Common Land Unit** **Tract Boundary**

**Wetland Determination Identifiers**

Unless otherwise noted, crops listed below are:  
 Non-irrigated Intended for Grain  
 Corn = Yellow  
 Soybeans = Common  
 Wheat = HRS or HRW  
 Sunflowers = Oil or Non  
 Producer Initial \_\_\_\_\_  
 Date \_\_\_\_\_

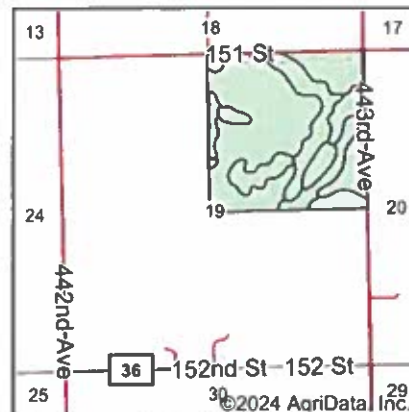
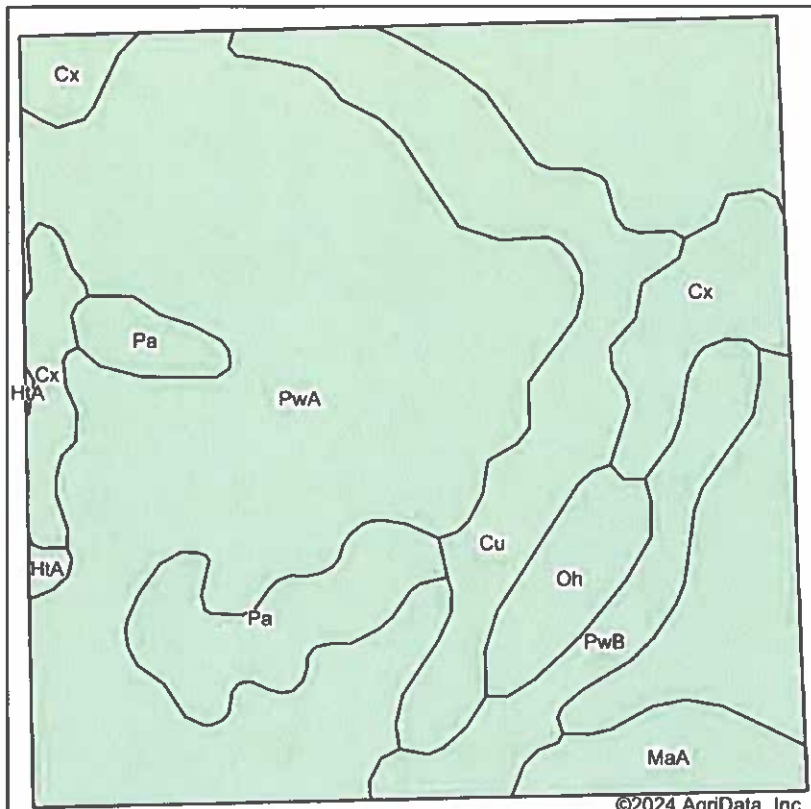
2024 Program Year  
 Map Created November 07 2023  
**Farm 4074**

**19-120N-54W-Day**

United States Department of Agriculture (USDA) Farm Service Agency (FSA) maps are for FSA Program administration only. This map does not represent a legal survey or reflect actual ownership, rather it depicts the information provided directly from the producer and/or National Agricultural Imagery Program (NAIP) imagery. The producer accepts the data "as is" and assumes all risks associated with its use. USDA-FSA assumes no responsibility for actual or consequential damage incurred as a result of any user's reliance on this data outside FSA Programs. Wetland Identifiers do not represent the size, shape, or specific determination of the area. Refer to your original determination (CPA-026 and attached maps) for exact boundaries and determinations or contact USDA Natural Resources Conservation Service (NRCS).

For **TRACT 2**

# Soils Map



State: **South Dakota**  
 County: **Day**  
 Location: **19-120N-54W**  
 Township: **Egeland**  
 Acres:  
 Date:



Soils data provided by USDA and NRCS.

©2024 AgriData, Inc.

Area Symbol: SD037, Soil Area Version: 29

Code	Soil Description	Acres	Percent of field	Non-Irr Class *c	Productivity Index	Corn Bu	Soybeans Bu	*n NCCPI Soybeans
PwA	Poinsett-Waubay silty clay loams, 0 to 2 percent slopes	97.24	60.5%	Is	93			73
Cu	Cubden silty clay loam, 0 to 2 percent slopes	19.60	12.2%	IIs	77			61
Cx	Cubden-Tonka silty clay loams, coteau, 0 to 2 percent slopes	12.69	7.9%	IIs	71			45
Pa	Parnell silty clay loam	10.76	6.7%	Vw	34	25	9	8
PwB	Poinsett-Waubay silty clay loams, 1 to 6 percent slopes	9.21	5.7%	Ile	89			72
MaA	Maddock-Egeland sandy loams, 0 to 2 percent slopes	5.42	3.4%	IIIs	46	46	18	36
Oh	Oldham silty clay loam	5.28	3.3%	Vw	30	25	8	21
HtA	Hetland silty clay loam, 0 to 2 percent slopes	0.52	0.3%	Is	89			59
<b>Weighted Average</b>				<b>1.72</b>	<b>81.5</b>	<b>4</b>	<b>1.5</b>	<b>*n 61.9</b>

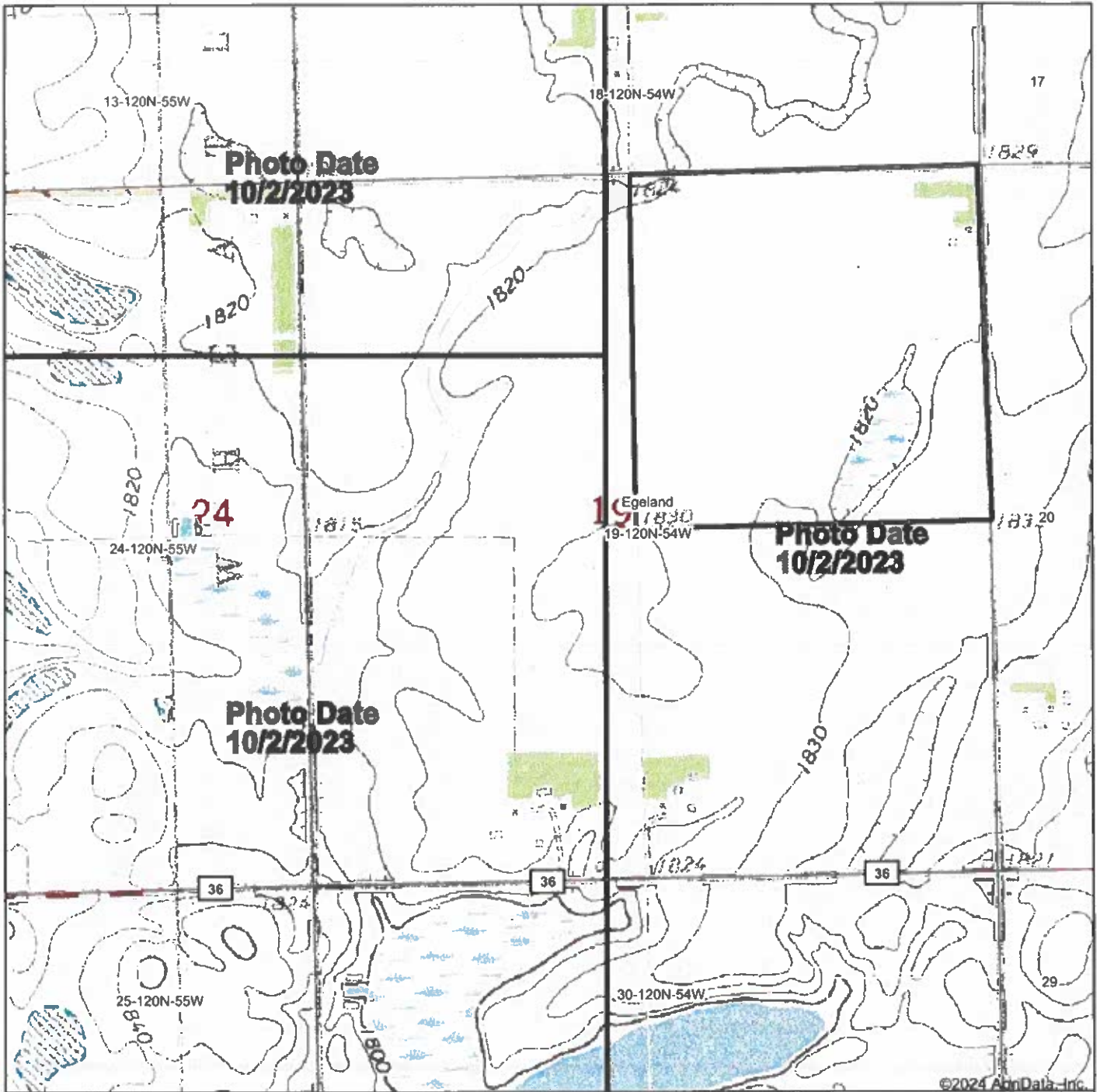
\*n: The aggregation method is "Weighted Average using all components"

\*c: Using Capabilities Class Dominant Condition Aggregation Method

Soils data provided by USDA and NRCS.

## TRACT 2

# Topography Map



Map Center: 45° 11' 15.78, -97° 21' 51.7

0ft 1164ft 2328ft

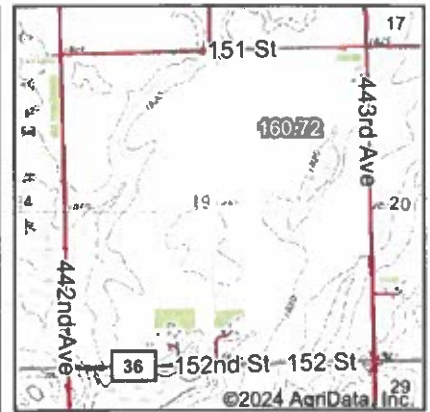
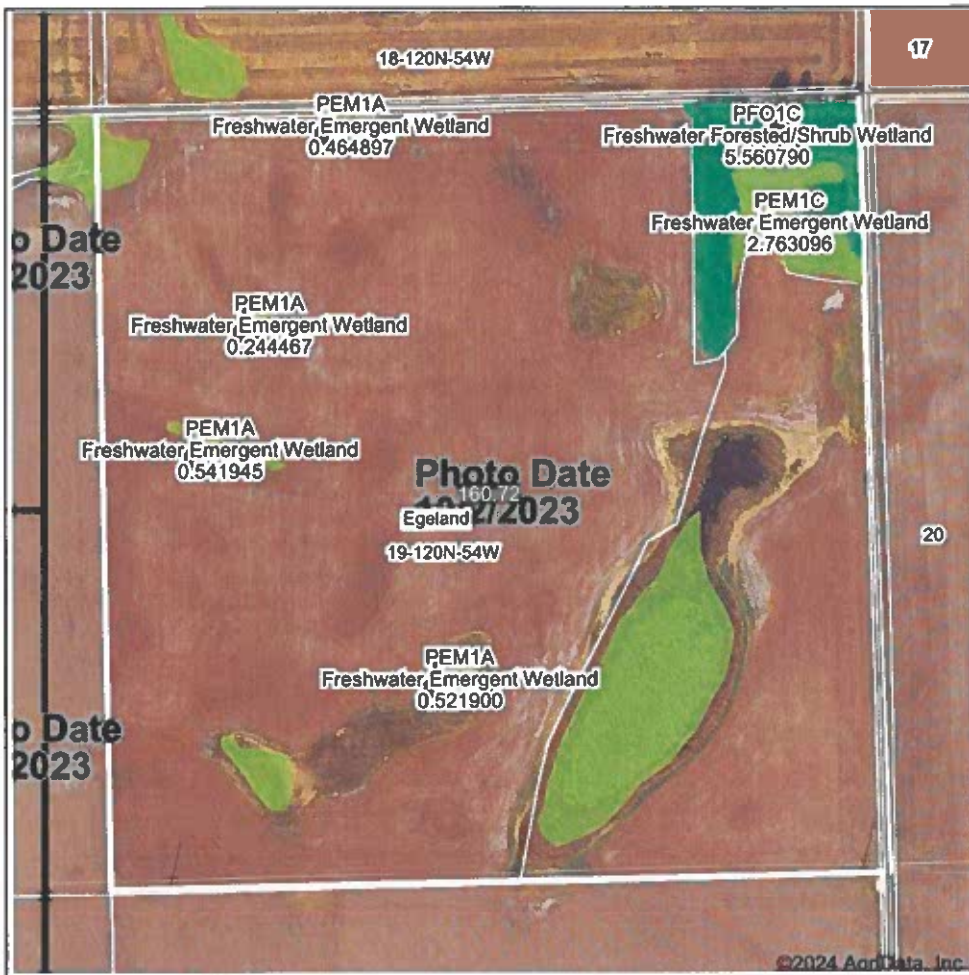
**19-120N-54W**  
**Day County**  
**South Dakota**



Field borders provided by Farm Service Agency as of 5/21/2008.

# TRACT 2

### Wetlands Map



State: **South Dakota**  
 Location: **19-120N-54W**  
 County: **Day**  
 Township: **Egeland**  
 Date:

Maps Provided By:  
  
 CUSTOMIZED ONLINE MAPPING  
 © AgriData, Inc. 2023 www.AgriDataInc.com



Classification Code	Type	Acres
PEM1A	Freshwater Emergent Wetland	11.20
PFO1C	Freshwater Forested/Shrub Wetland	5.54
PEM1C	Freshwater Emergent Wetland	2.76
<b>Total Acres</b>		<b>19.50</b>

Data Source: National Wetlands Inventory website. U.S. DoI, Fish and Wildlife Service, Washington, D.C. <http://www.fws.gov/wetlands/>

Field borders provided by Farm Service Agency as of 5/21/2008.

# TRACT 2

NOT TO SCALE

130-54



19

125-54

TRACT 2