

Common Land Unit
 Non-Cropland
 Cropland
 Tract Boundary
 PLSS

Wetland Determination Identifiers
 Restricted Use
 Limited Restrictions
 Exempt from Conservation Compliance Provisions

Unless otherwise noted, crops listed below are:
 Non-irrigated Intended for Grain
 Corn = Yellow
 Soybeans = Common
 Wheat = HRS or HRW
 Sunflowers = Oil or Non
 Producer Initial _____
 Date _____

2024 Program Year
 Map Created June 12, 2024
Farm 4074

17-120N-54W-Day

United States Department of Agriculture (USDA) Farm Service Agency (FSA) Farm Service Office (FSO) represents a legal survey or reflect actual producer accepts the data 'as is' and farmer's reliance on this data outside FSA Form 56 and attached maps for exact

TRACT 1

Aerial Map



Boundary Center: 45° 11' 56.27, -97° 20' 47.03



17-120N-54W
Day County
South Dakota



Maps Provided By:
surety
CUSTOMIZED ONLINE MAPPING
 © AgriData, Inc. 2023 www.AgriDataInc.com

7/11/2024

Field borders provided by Farm Service Agency as of 5/21/2008.

TRACT 1



Day County, South Dakota



Common Land Unit Tract Boundary
 Non-Cropland
 Cropland

Wetland Determination Identifiers
 Restricted Use
 Limited Restrictions
 Exempt from Conservation Compliance Provisions

Unless otherwise noted, crops listed below are:
 Non-irrigated Intended for Grain
 Corn = Yellow
 Soybeans = Common
 Wheat = HRS or HRW
 Sunflowers = Oil or Non

Producer Initial _____
 Date _____

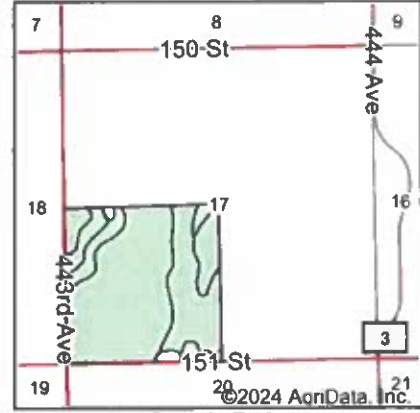
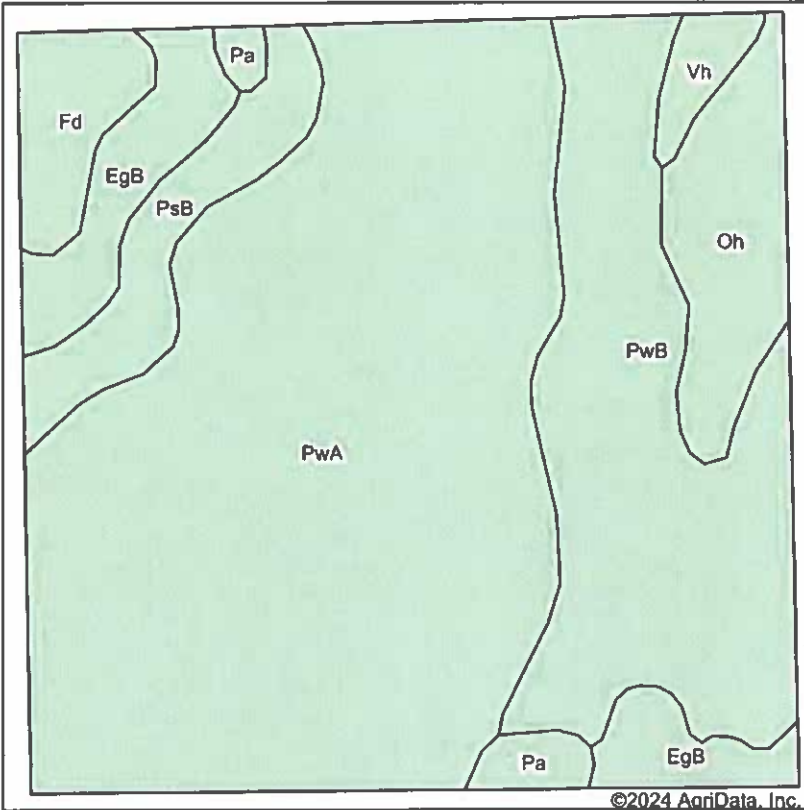
2024 Program Year
 Map Created November 07, 2023

Farm 4074

17-120N-54W-Day

United States Department of Agriculture (USDA) Farm Service Agency (FSA) maps are for FSA Program administration only. This map does not represent a legal survey or reflect actual ownership, rather it depicts the information provided directly from the producer and/or National Agricultural Imagery Program (NAIP) imagery. The producer accepts the data "as is" and assumes all risks associated with its use. USDA-FSA assumes no responsibility for actual or consequential damage incurred as a result of any user's reliance on this data outside FSA Programs. Wetland identifiers do not represent the size, shape, or specific determination of the area. Refer to your original determination (CPA-026 and attached maps) for exact boundaries and determinations or contact USDA Natural Resources Conservation Service (NRCS).

Soils Map



State: **South Dakota**
 County: **Day**
 Location: **17-120N-54W**
 Township: **Egeland**
 Acres:
 Date:



Soils data provided by USDA and NRCS.

©2024 AgriData, Inc.

Area Symbol: SD037, Soil Area Version: 29

Code	Soil Description	Acres	Percent of field	Non-Irr Class *c	Productivity Index	Corn Bu	Soybeans Bu	*n NCCPI Soybeans
PwA	Poinsett-Waubay silty clay loams, 0 to 2 percent slopes	86.19	54.2%	Is	93			73
PwB	Poinsett-Waubay silty clay loams, 1 to 6 percent slopes	33.76	21.2%	Ile	89			72
EgB	Egeland-Embden complex, 2 to 6 percent slopes	10.32	6.5%	IIle	56	48	18	44
Oh	Oldham silty clay loam	10.24	6.4%	Vw	30	25	8	21
PsB	Poinsett-Rusklyn-Waubay silty clay loams, 1 to 6 percent slopes	8.40	5.3%	Ile	84			70
Fd	Fordville loam, coteau, 0 to 2 percent slopes	5.54	3.5%	IIs	59			48
Pa	Parnell silty clay loam	2.44	1.5%	Vw	34	25	9	8
Vh	Vallers-Hamerly loams	2.24	1.4%	IVw	57	50	16	54
Weighted Average				1.79	82.6	5.8	2	*n 65.3

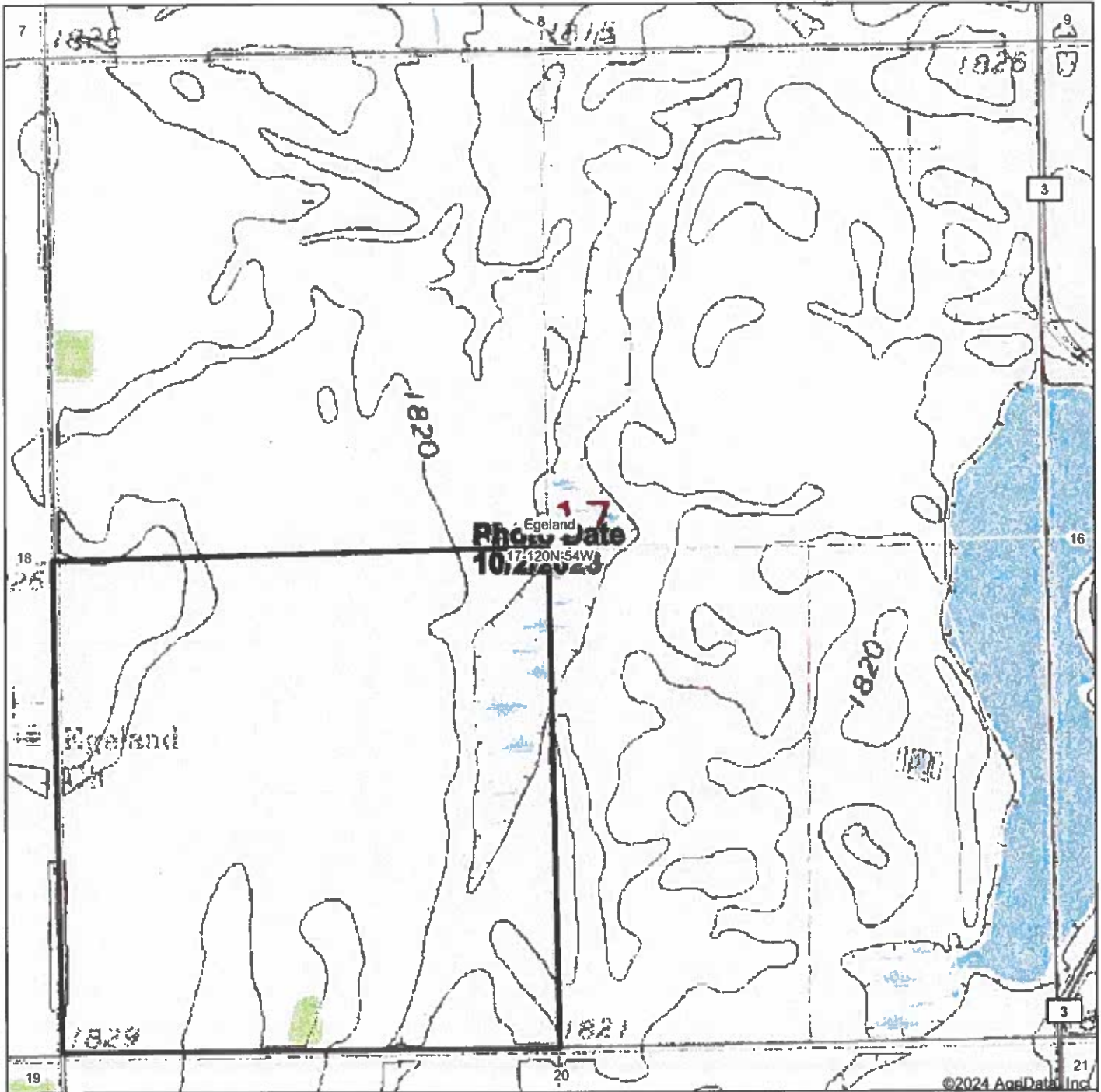
*n: The aggregation method is "Weighted Average using all components"

*c: Using Capabilities Class Dominant Condition Aggregation Method

Soils data provided by USDA and NRCS.

TRACT 1

Topography Map



Map Center: 45° 12' 9.35, -97° 20' 28.56



17-120N-54W
Day County
South Dakota



Field borders provided by Farm Service Agency as of 5/21/2008.

TRACT 1

Wetlands Map



State: **South Dakota**
 Location: **17-120N-54W**
 County: **Day**
 Township: **Egeland**
 Date:

Maps Provided By

 CUSTOMER ONLINE MAPPING
 © AgriData, Inc. 2023 www.AgriDataInc.com



Classification Code	Type	Acres
PEM1C	Freshwater Emergent Wetland	7.00
PUBH	Freshwater Pond	6.38
Total Acres		13.38

Data Source: National Wetlands Inventory website. U.S. DoI, Fish and Wildlife Service, Washington, D.C. <http://www.fws.gov/wetlands/>

Field borders provided by Farm Service Agency as of 5/21/2008.

TRACT 1

NOT TO SCALE

