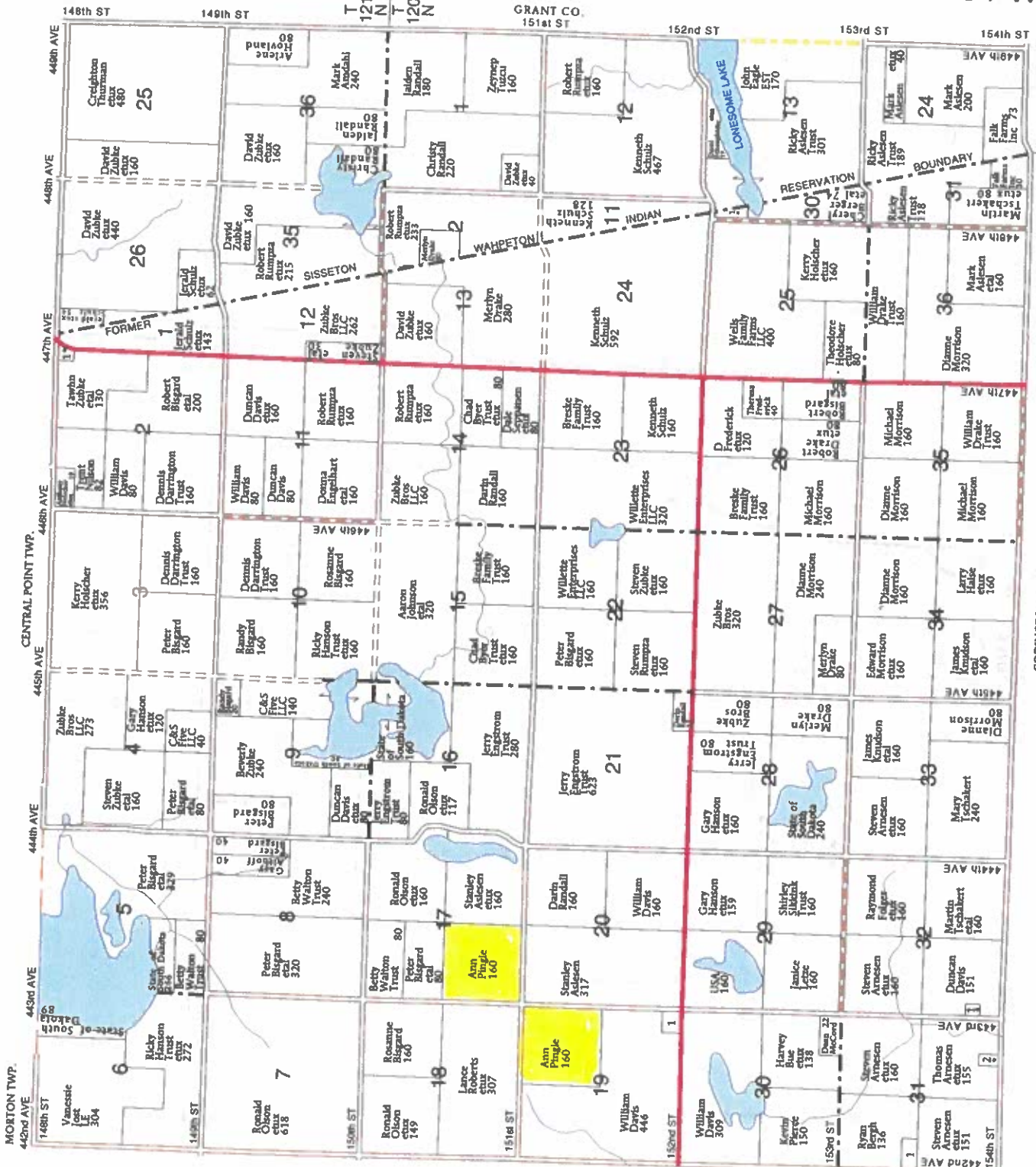


# EGELAND PLAT

R-53-54-W

GRANT CO.  
151st ST



MORTON TWP.  
442nd Ave

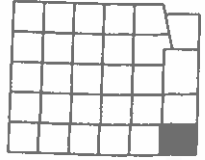
CENTRAL POINT TWP.

WHEATLAND TWP.

CODINGTON CO.

R54W R53W

EGELAND TOWNSHIP	
SECTION 2N	19
SECTION 19	12
SECTION 30E	9
SECTION 31W	14
SECTION 32	5
SECTION 33	9



### **Subject Property Description**

The subject property is located approximately 10 miles northwest of Florence, South Dakota in southeastern Day County. It contains 320 acres, more or less. There are approximately 296 acres cropland for a 93% tillable ratio.

The SW1/4-17-120-54 contains 160 acres, more or less. This quarter is mostly all nearly level cropland. There are approx. 146 acres tillable with a good .86 weighted soil productivity rating. The balance is mostly slough habitat and drainway in the northeastern corner. Gravel road access on the west and south.

The NE1/4-19-120-54 contains 160 acres, more or less. This quarter is mostly all nearly level to gently sloping cropland. There is a vacant wooded acreage site in the northeast corner. The remaining improvements were given \$0 contributory value. There are approximately 150 acres tillable, including approx. 15 acres flooded. The tillable acres have a .81 weighted soil productivity rating overall and the approx. 135 acres farmed have a .83 weighted rating. Gravel road access on the north and east.