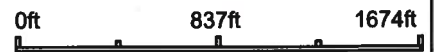


Aerial Map



Map Center: 45° 32' 12.52, -97° 15' 28.61



11-124N-53W
Day County
South Dakota

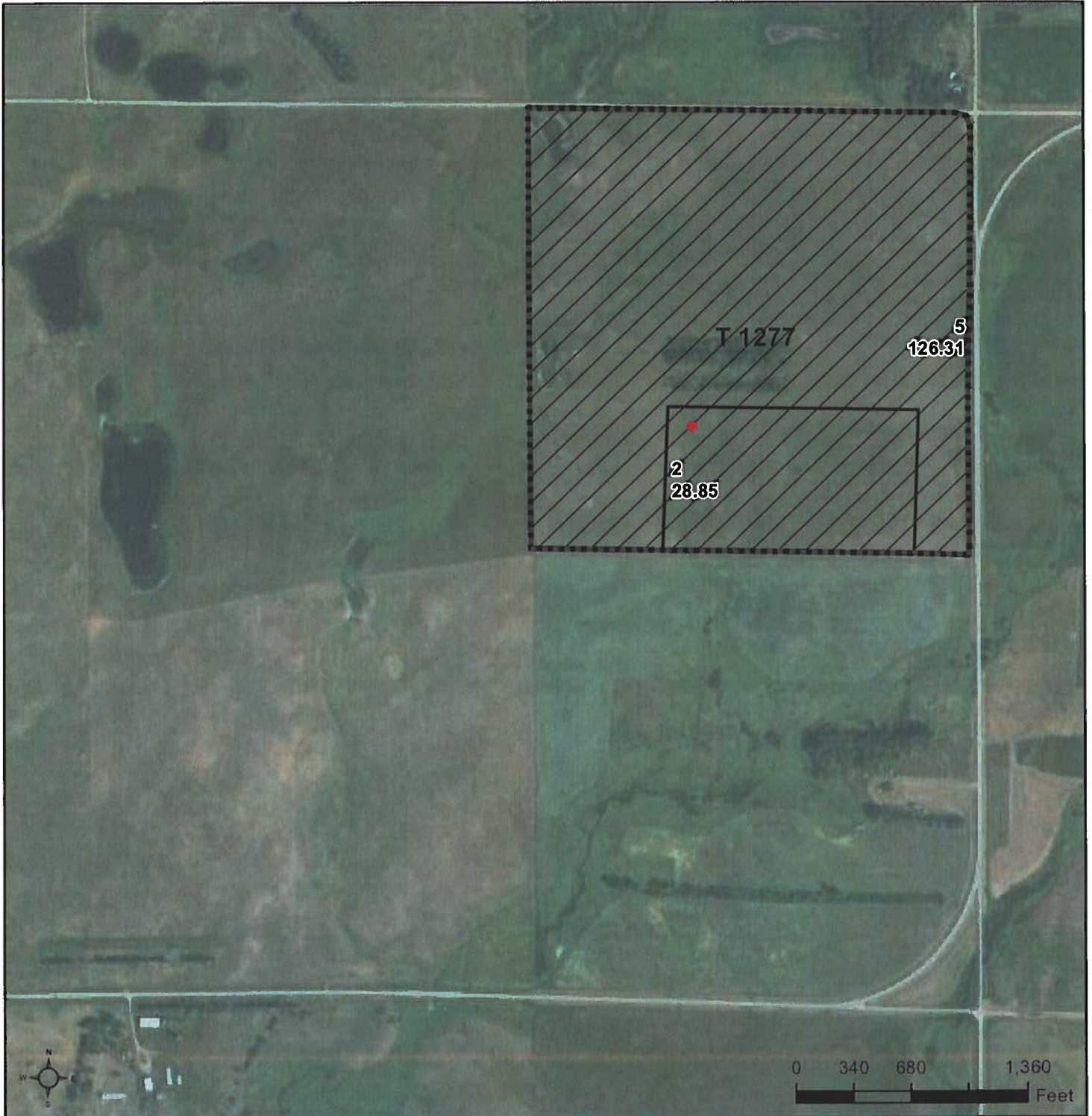


7/19/2021


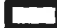
Maps Provided By:

 CUSTOMIZED ONLINE MAPPING
 © AgriData, Inc. 2021 www.AgrDataInc.com




Field borders provided by Farm Service Agency as of 5/21/2008.



Common Land Unit PLSS

-  Non-Cropland
-  Tract Boundary

Wetland Determination Identifiers

-  Restricted Use
-  Limited Restrictions
-  Exempt from Conservation Compliance Provisions

2021 Program Year

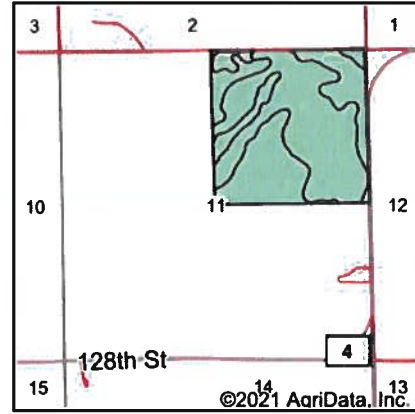
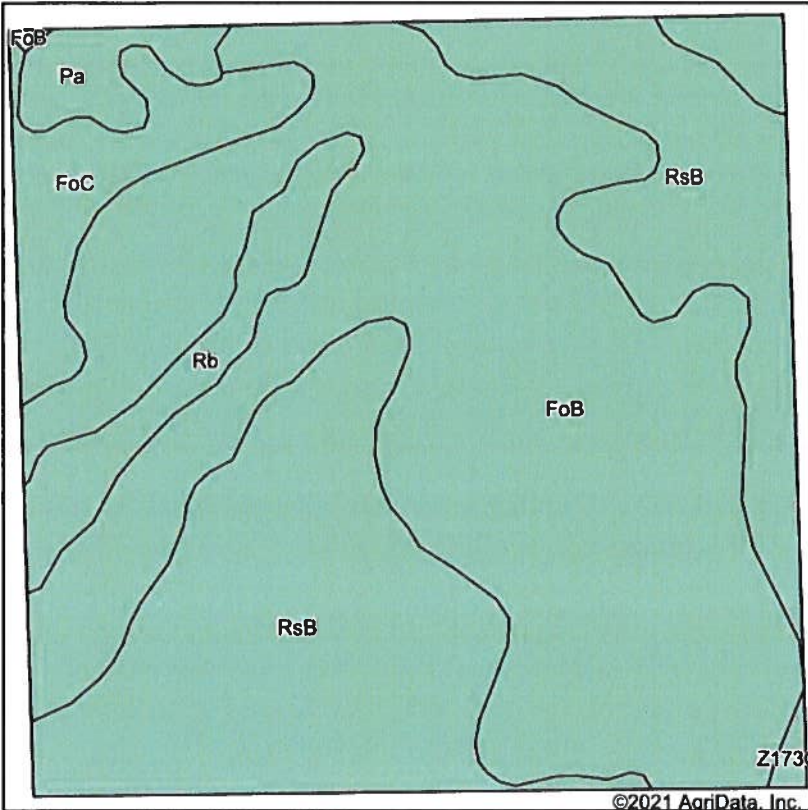
Map Created March 18, 2021

Farm 2998

11-124N-53W-Day

United States Department of Agriculture (USDA) Farm Service Agency (FSA) maps are for FSA Program administration only. This map does not represent a legal survey or reflect actual ownership; rather it depicts the information provided directly from the producer and/or National Agricultural Imagery Program (NAIP) imagery. The producer accepts the data 'as is' and assumes all risks associated with its use. USDA-FSA assumes no responsibility for actual or consequential damage incurred as a result of any user's reliance on this data outside FSA Programs. Wetland identifiers do not represent the size, shape, or specific determination of the area. Refer to your original determination (CPA-026 and attached maps) for exact boundaries and determinations or contact USDA Natural Resources Conservation Service (NRCS).

Soils Map



State: **South Dakota**
 County: **Day**
 Location: **11-124N-53W**
 Township: **Kosciusko**
 Acres: **158.86**
 Date: **7/19/2021**



Soils data provided by USDA and NRCS.

Area Symbol: SD037, Soil Area Version: 26

Code	Soil Description	Acres	Percent of field	Non-Irr Class *c	Productivity Index	Corn	Soybeans	*n NCCPI Soybeans
FoB	Forman-Buse-Aastad loams, 1 to 6 percent slopes	84.52	53.2%	Ile	79	64	23	56
RsB	Renshaw-Sioux complex, coteau, 2 to 6 percent slopes	53.44	33.6%	IVs	34			29
FoC	Forman-Buse-Aastad loams, 2 to 9 percent slopes	9.33	5.9%	IIIe	65	54	20	54
Rb	Rauville silty clay loam	7.15	4.5%	Vw	28	21	7	5
Pa	Parnell silty clay loam	3.85	2.4%	Vw	34	25	9	8
Z173C	Renshaw-Sioux complex, coteau, 6 to 9 percent slopes	0.57	0.4%	IVe	28			28
Weighted Average					59.5	38.8	13.9	*n 43.2

*n: The aggregation method is "Weighted Average using all components"
 *c: Using Capabilities Class Dominant Condition Aggregation Method

Soils data provided by USDA and NRCS.

South Dakota
Day

U.S. Department of Agriculture
Farm Service Agency

FARM: 2998
Prepared: 7/21/21 3:05 PM
Crop Year: 2021
Page: 1 of 1

Report ID: FSA-156EZ

Abbreviated 156 Farm Record

DISCLAIMER: This is data extracted from the web farm database. Because of potential messaging failures in MIDAS, this data is not guaranteed to be an accurate and complete representation of data contained in the MIDAS system, which is the system of record for Farm Records.

Operator Name Farm Identifier

Farms Associated with Operator:

ARC/PLC G//F Eligibility: Eligible

CRP Contract Number(s): None

Farmland	Cropland	DCP Cropland	WBP	WRP	EWP	CRP Cropland	GRP	Farm Status	Number of Tracts
155.16	0.0	0.0	0.0	0.0	0.0	0.0	0.0	Active	1
State Conservation	Other Conservation	Effective DCP Cropland	Double Cropped	MPL/FWP	Native Sod				
0.0	0.0	0.0	0.0	0.0	0.0				

Tract Number: 1277 Description R2 NE 11 124 53 GRASSLAND EASEMENT 2000

FSA Physical Location : Day, SD ANSI Physical Location: Day, SD

BIA Range Unit Number:

HEL Status: HEL Determinations not complete

Wetland Status: Wetland determinations not complete

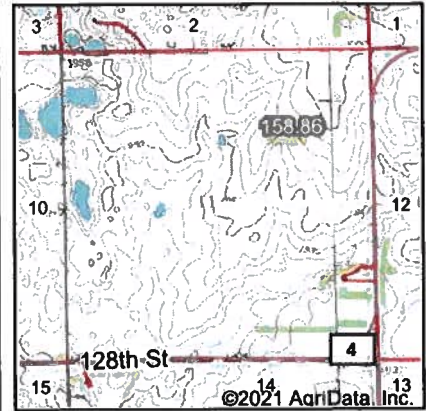
WL Violations: None

Farmland	Cropland	DCP Cropland	WBP	WRP	EWP	CRP Cropland	GRP
155.16	0.0	0.0	0.0	0.0	0.0	0.0	0.0
State Conservation	Other Conservation	Effective DCP Cropland	Double Cropped	MPL/FWP	Native Sod		
0.0	0.0	0.0	0.0	0.0	0.0		

Owners: KULESA, LOUIS

Other Producers: None

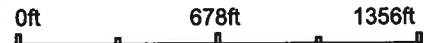
Wetlands Map



State: **South Dakota**
 Location: **11-124N-53W**
 County: **Day**
 Township: **Kosciusko**
 Date: **7/19/2021**

Maps Provided By

 CUSTOMIZED ONLINE MAPPING
 © AgriData, Inc. 2021 www.AgriDataInc.com

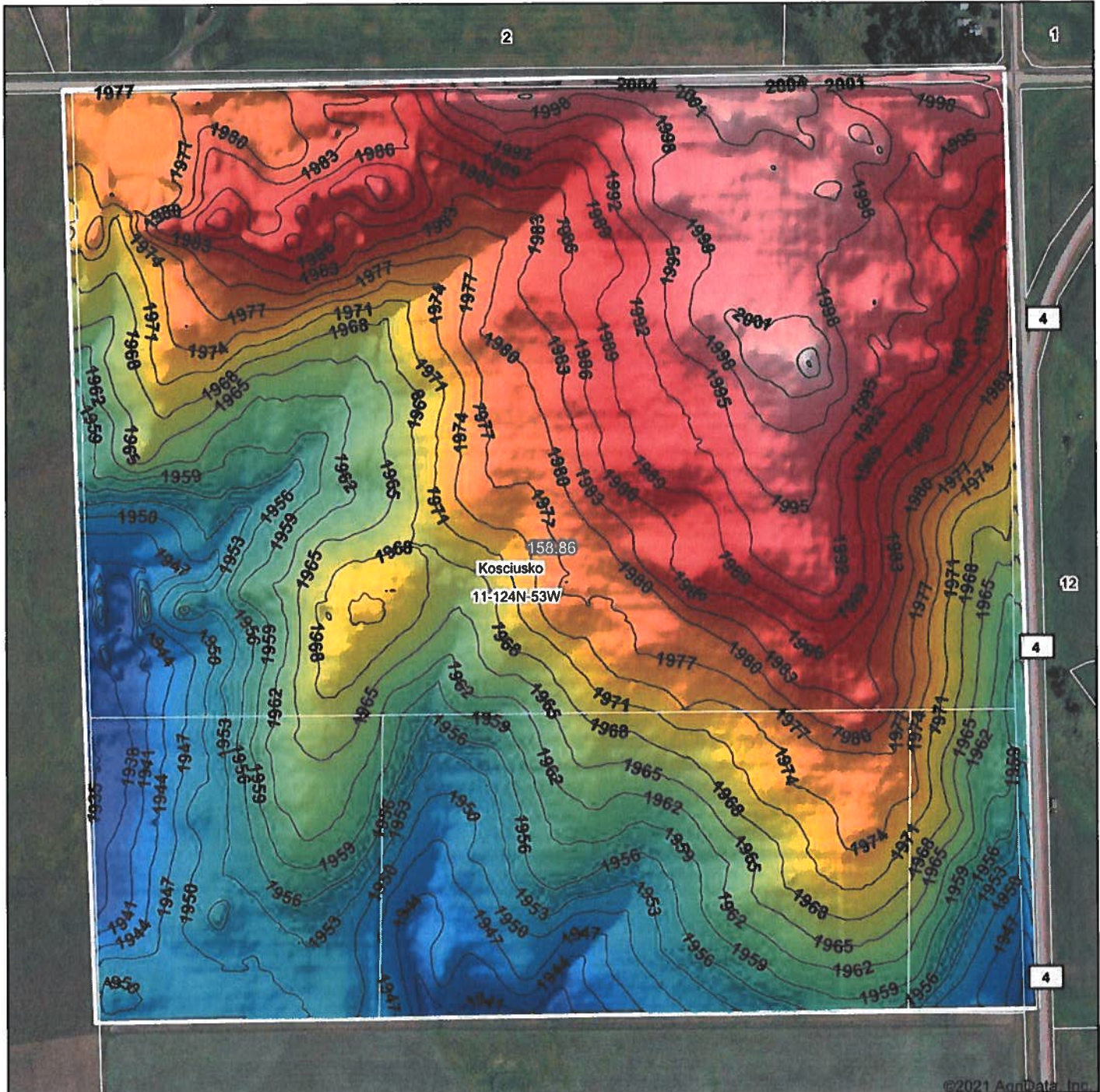


Classification Code	Type	Acres
PEM1C	Freshwater Emergent Wetland	1.93
PABFx	Freshwater Pond	0.32
PEM1A	Freshwater Emergent Wetland	0.29
PEM1Cx	Freshwater Emergent Wetland	0.15
Total Acres		2.69

Data Source: National Wetlands Inventory website. U.S. DoI, Fish and Wildlife Service, Washington, D.C. <http://www.fws.gov/wetlands/>

Field borders provided by Farm Service Agency as of 5/21/2008.

Topography Hillshade



©2021 AgnData, Inc.



Source: USGS 3 meter dem
 Interval(ft): 3
 Min: 1,933.9
 Max: 2,007.4
 Range: 73.5
 Average: 1,972.0
 Standard Deviation: 17.09 ft



7/19/2021

11-124N-53W
Day County
South Dakota

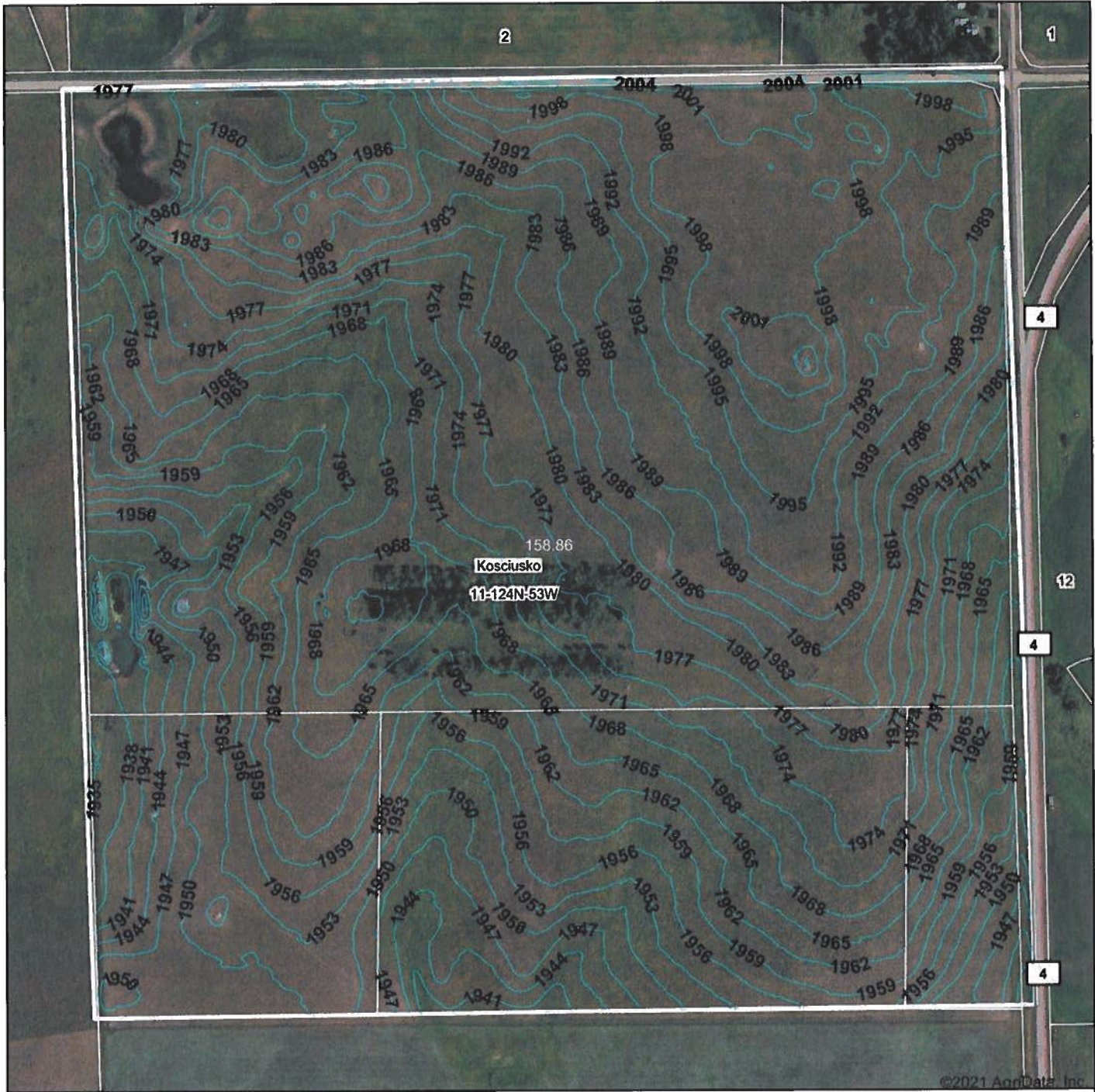
map center: 45° 32' 12.52, -97° 15' 28.61



© AgnData, Inc. 2021 www.AgnDataInc.com

Field borders provided by Farm Service Agency as of 5/21/2008.

Topography Contours



Source: USGS 3 meter dem
 Interval(ft): 3.0
 Min: 1,933.9
 Max: 2,007.4
 Range: 73.5
 Average: 1,972.0
 Standard Deviation: 17.09 ft



11-124N-53W
Day County
South Dakota

7/19/2021

Map Center: 45° 32' 12.52, -97° 15' 28.61

Maps Provided By

 CUSTOMIZED ONLINE MAPPING
 © AgriData, Inc 2021 www.AgriDataInc.com

Field borders provided by Farm Service Agency as of 5/21/2008.