

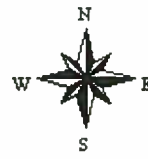
### Aerial Map



map center: 45° 30' 1.3, 96° 49' 49.36  
scale: 10659

Maps provided by:  
  
CUSTOMIZED ONLINE MAPPING  
©AgriData, Inc. 2013  
www.AgriDataInc.com

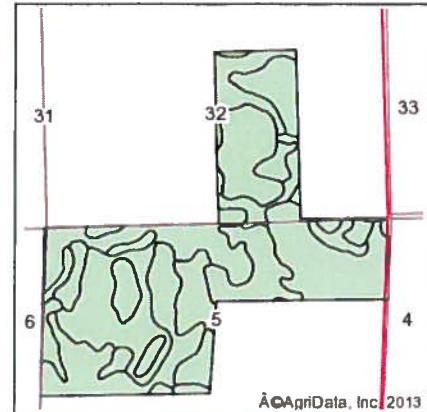
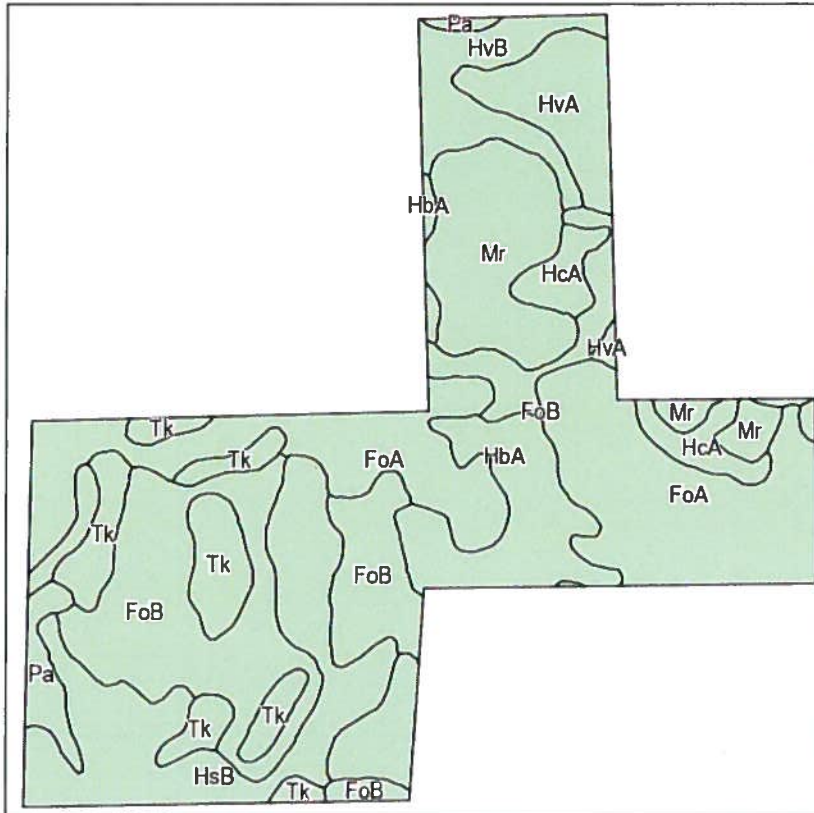
**32-124N-49W**  
**Roberts County**  
**South Dakota**



7/22/2013

Field borders provided by Farm Service Agency as of 5/21/2008. Aerial photography provided by Aerial Photography Field Office.

## Soils Map



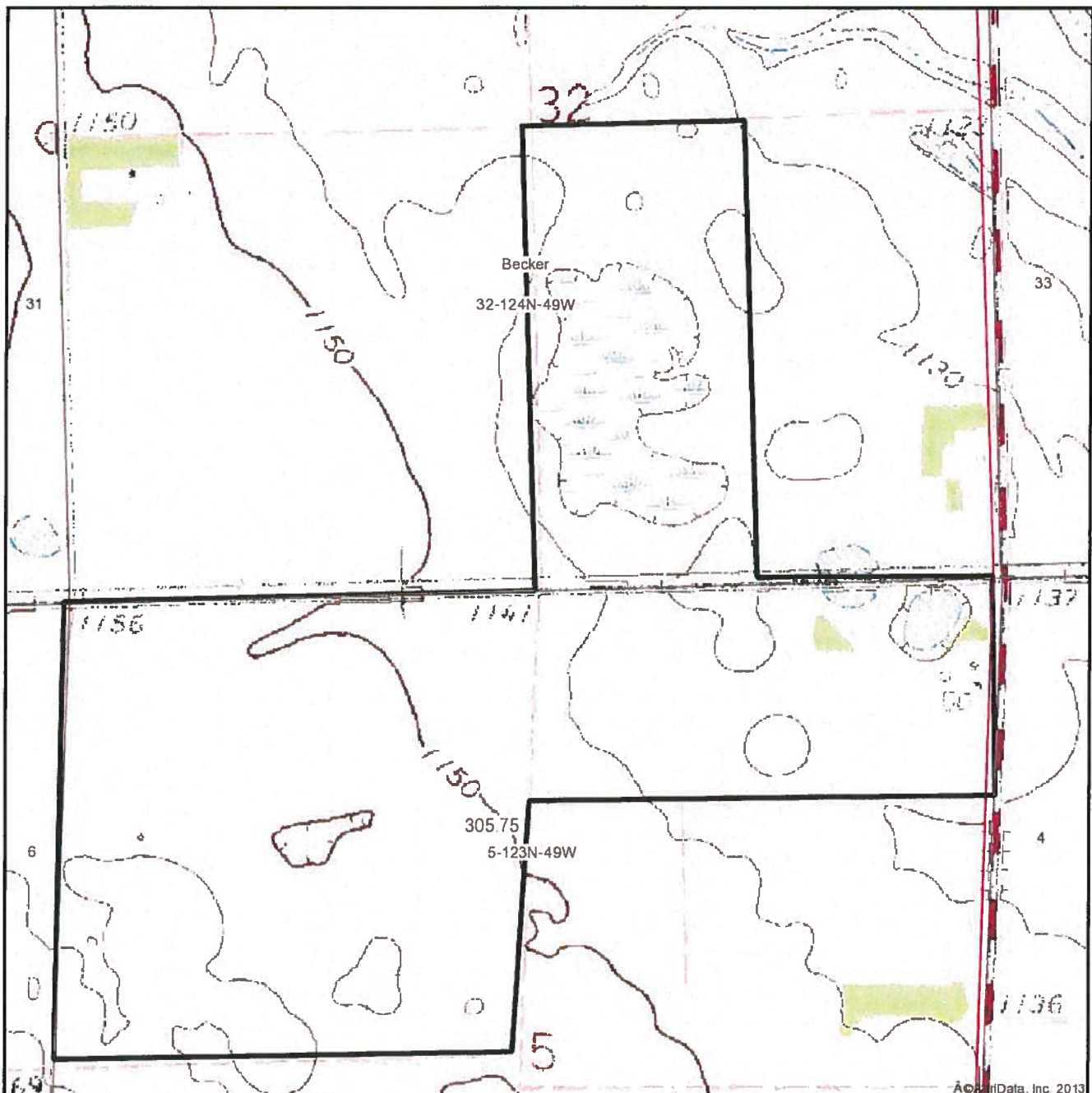
State: **South Dakota**  
 County: **Roberts**  
 Location: **32-124N-49W**  
 Township: **Becker**  
 Acres: **305.8**  
 Date: **7/22/2013**

Field borders provided by Farm Service Agency as of 5/21/2008.  
 Soils data provided by USDA and NRCS.



Code	Soil Description	Acres	Percent of field	Non-Irr Class	Productivity Index	Corn	Soybeans
FoA	Forman-Aastad loams, 0 to 2 percent slopes	78.8	25.8%	I	87	84	32
FoB	Forman-Aastad loams, 2 to 6 percent slopes	61.7	20.2%	Ile	82	79	30
HsB	Heimdal-Sisseton loams, 2 to 6 percent slopes	40.6	13.3%	Ile	76	71	26
Mr	Southam silty clay loam	29.9	9.8%	VIIIw	10	5	1
Tk	Tonka silt loam	23.7	7.8%	IVw	60	56	21
HbA	Hamerly-Tonka complex, 0 to 3 percent slopes	22.5	7.4%	IIlw	69	70	23
HvA	Heimdal-Svea loams, 0 to 2 percent slopes	15.3	5.0%	I	87	86	32
HvB	Heimdal-Svea loams, 2 to 6 percent slopes	14.7	4.8%	Ile	83	82	31
HcA	Hamerly-Vallers loams, 0 to 2 percent slopes	10	3.3%	IIw	71	70	22
Pa	Parnell silty clay loam	6	1.9%	Vw	31	29	11
HcB	Hamerly-Vallers loams, 2 to 4 percent slopes	2.6	0.9%	IIw	64	64	21
<b>Weighted Average</b>					<b>71.7</b>	<b>68.8</b>	<b>25.4</b>

### Topography Map



©AgriData, Inc. 2013

map center: 45° 30' 1.3, 96° 49' 49.36  
scale: 10659

Maps provided by:



©AgriData, Inc. 2013  
www.AgriDataInc.com

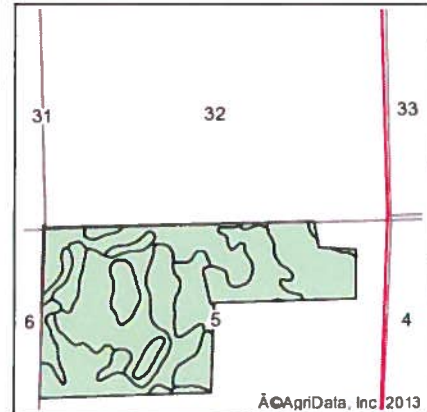
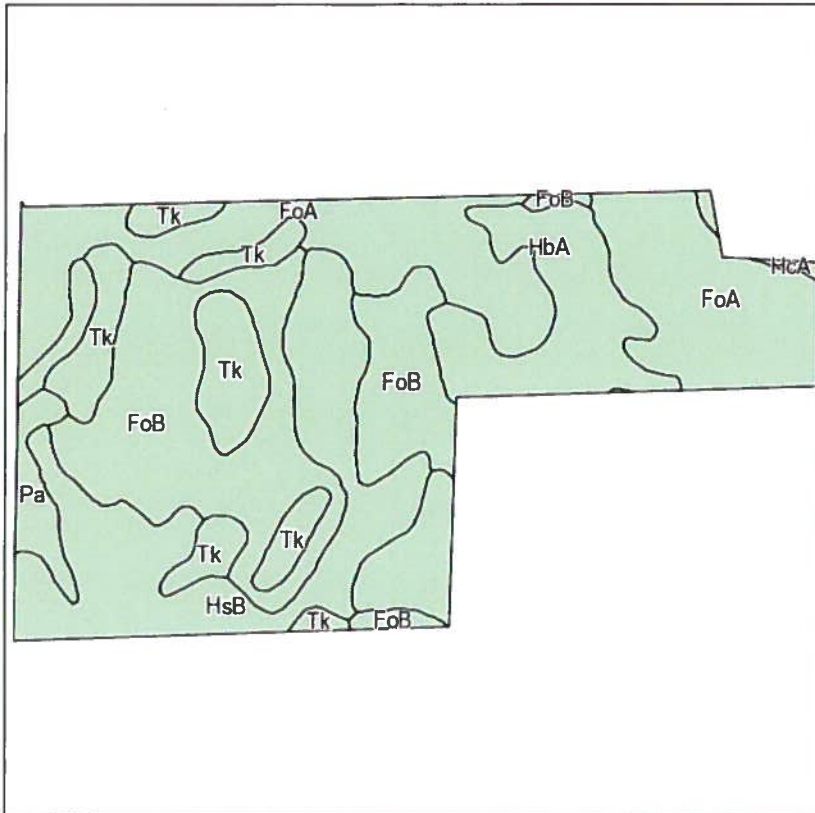
**32-124N-49W**  
**Roberts County**  
**South Dakota**



7/22/2013

Field borders provided by Farm Service Agency as of 5/21/2008. Aerial photography provided by Aerial Photography Field Office.

### Soils Map



State: **South Dakota**  
 County: **Roberts**  
 Location: **32-124N-49W**  
 Township: **Becker**  
 Acres: **209.1**  
 Date: **7/22/2013**

Field borders provided by Farm Service Agency as of 5/21/2008.  
 Soils data provided by USDA and NRCS.



Code	Soil Description	Acres	Percent of field	Non-Irr Class	Productivity Index	Corn	Soybeans
FoA	Forman-Aastad loams, 0 to 2 percent slopes	63.4	30.3%	I	87	84	32
FoB	Forman-Aastad loams, 2 to 6 percent slopes	52.7	25.2%	Ile	82	79	30
HsB	Heimdal-Sisseton loams, 2 to 6 percent slopes	40	19.1%	Ile	76	71	26
Tk	Tonka silt loam	23.7	11.3%	IVw	60	56	21
HbA	Hamerly-Tonka complex, 0 to 3 percent slopes	20.8	10.0%	IIIw	69	70	23
Pa	Parnell silty clay loam	5	2.4%	Vw	31	29	11
HcB	Hamerly-Vallers loams, 2 to 4 percent slopes	2.6	1.2%	IIw	64	64	21
HcA	Hamerly-Vallers loams, 0 to 2 percent slopes	0.9	0.4%	IIw	71	70	22
<b>Weighted Average</b>					<b>77</b>	<b>74</b>	<b>27.5</b>



**Abbreviated 156 Farm Record**

State : SOUTH DAKOTA

Farm Number : 8457

County : ROBERTS

Operator Name :

DAVID LOUIS VOSBERG

Farm Associated with operators :

46-109-252, 46-109-8457

CRP contract numbers :

**Farm Land Data**

Farmland	Cropland	DCP Cropland	WBP	WRP	CRP	GRP	Farm Status	Number Of Tracts
300.93	282.59	282.59	0.00	0.00	0.00	0.00	Active	2

State Conservation	Other Conservation	Effective DCP Cropland	Double Cropped	MPL	FWP	FAV/WR History	Acre Election	EWP	DCP Ag. Related Activity
0.00	0.00	282.59	0.00	0.00	0.00	No	No	0.00	0.00

**DCP Crop Data**

Crop Name	Base Acres	CCC-505 CRP Reduction Acres	PTPP Reduction Acres	Direct Yield	Counter Cyclical Yield
Wheat	75.40	0.00	0.00	23	40
Corn	67.40	0.00	0.00	67	130
Soybeans	138.20	0.00	0.00	29	35

**NOTES**



**Abbreviated 156 Farm Record**

State : SOUTH DAKOTA

Farm Number : 8457

County : ROBERTS

Tract Number : 3590

**Description : G10 LOTS 1 2 3 & 4 S2NW 5 123 49**

**FAV/WR History : No**

BIA Unit Range Number :

HEL Status : NHEL: No agricultural commodity planted on undetermined fields

Wetland Status : Tract contains a wetland or farmed wetland

WL Violations :

Owners : DOROTHY VOSBERG

Other Producers :

**Tract Land Data**

Farm Land	Cropland	DCP Cropland	WBP	WRP	CRP	GRP
225.93	208.28	208.28	0.00	0.00	0.00	0.00

State Conservation	Other Conservation	Effective DCP Cropland	Double Cropped	MPL	FWP	EWP	DCP Ag. Related Activity
0.00	0.00	208.28	0.00	0.00	0.00	0.00	0.00

**DCP Crop Data**

Crop Name	Base Acres	CCC-505 CRP Reduction Acres	PTPP Reduction Acres	Direct Yield	Counter Cyclical Yield
Wheat	55.50	0.00	0.00	23	40
Corn	49.60	0.00	0.00	67	130
Soybeans	101.70	0.00	0.00	29	35

**NOTES**

State : SOUTH DAKOTA

Farm Number : 8457

County : ROBERTS

Tract Number : 3591

**Description : H10 W2SE 32 124 49**

**FAV/WR History : No**



**Abbreviated 156 Farm Record**

BIA Unit Range Number :

HEL Status : NHEL: No agricultural commodity planted on undetermined fields

Wetland Status : Tract does not contain a wetland

WL Violations :

Owners : DOROTHY VOSBERG

Other Producers :

**Tract Land Data**

Farm Land	Cropland	DCP Cropland	WBP	WRP	CRP	GRP
75.00	74.31	74.31	0.00	0.00	0.00	0.00

State Conservation	Other Conservation	Effective DCP Cropland	Double Cropped	MPL	FWP	EWP	DCP Ag. Related Activity
0.00	0.00	74.31	0.00	0.00	0.00	0.00	0.00

**DCP Crop Data**

Crop Name	Base Acres	CCC-505 CRP Reduction Acres	PTPP Reduction Acres	Direct Yield	Counter Cyclical Yield
Wheat	19.90	0.00	0.00	23	40
Corn	17.80	0.00	0.00	67	130
Soybeans	36.50	0.00	0.00	29	35

**NOTES**



United States Department of Agriculture  
Farm Service Agency

December 26, 2012

PLSS: 5\_123N\_49W  
Farm: 8457

**Roberts County**

1:8,685 **2013 Maps**



Disclaimer: Wetland identifiers do not represent the size, shape or specific determination of the area. Refer to your original determination (CPA-026 and attached maps) for exact wetland boundaries and determinations, or contact NRCS.

**2012 Ortho-Photography - Not To Scale**





United States Department of Agriculture  
Farm Service Agency

December 26, 2012

PLSS: 32\_124N\_49W  
Farm: 8457

**Roberts County**

1:8,719 **2013 Maps**



Disclaimer: Wetland identifiers do not represent the size, shape or specific determination of the area. Refer to your original determination (CPA-026 and attached maps) for exact wetland boundaries and determinations, or contact NRCS.

**2012 Ortho-Photography - Not To Scale**

40B  
(1)

Dorothy Tashberg, asst  
Dir



43

(2)

T-5591

**Pam Richards - Delaney, Nielsen and Sannes P.C.**

---

**From:** Bartnick, Lindsay - FSA, Sisseton, SD <lindsay.bartnick@sd.usda.gov>  
**Sent:** Wednesday, July 24, 2013 10:27 AM  
**To:** Pam Richards - Delaney, Nielsen and Sannes P.C. (pam@delaneylawfirm.com)

---

