

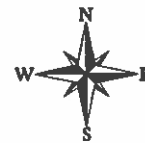
Aerial Map



Boundary Center: 45° 56' 0.82, -97° 13' 23.52



30-129N-52W
Roberts County
South Dakota



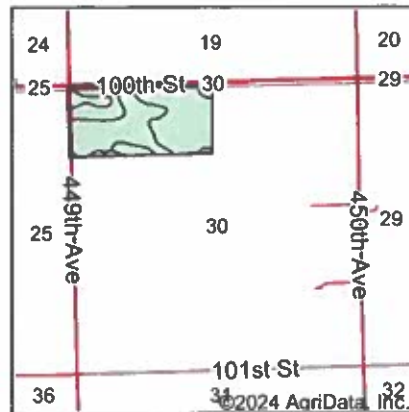
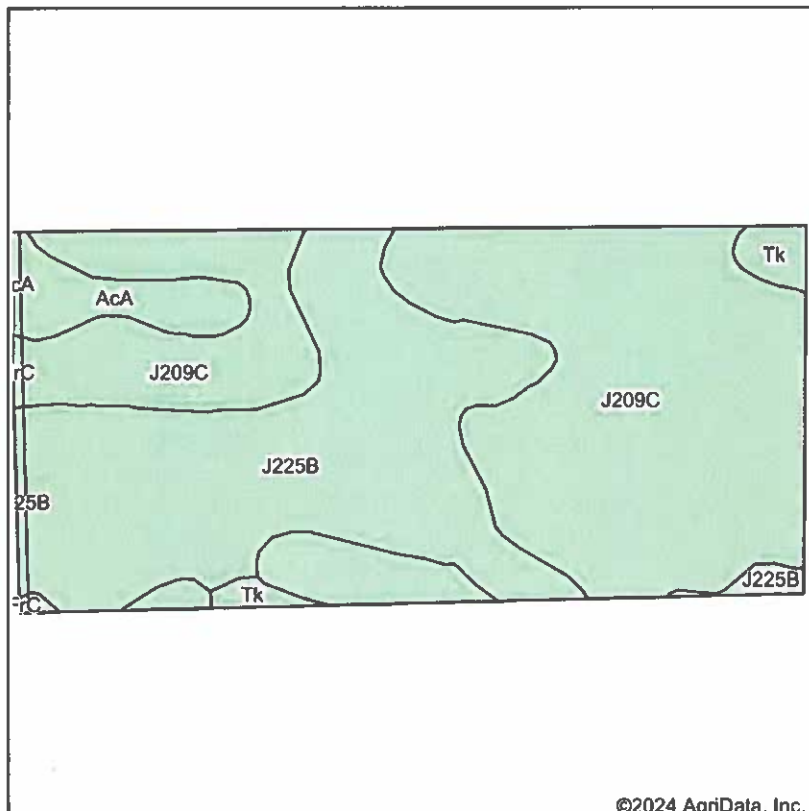
7/18/2024

Maps Provided By:

 CUSTOMER ONLINE MAPPING
 © AgriData, Inc. 2023 www.AgriDataInc.com

Field borders provided by Farm Service Agency as of 5/21/2008.

Soils Map



State: **South Dakota**
 County: **Roberts**
 Location: **30-129N-52W**
 Township: **Norway**
 Acres:
 Date:

Maps Provided By



Soils data provided by USDA and NRCS.

©2024 AgriData, Inc.

Area Symbol: SD091, Soil Area Version: 24
 Area Symbol: SD109, Soil Area Version: 24

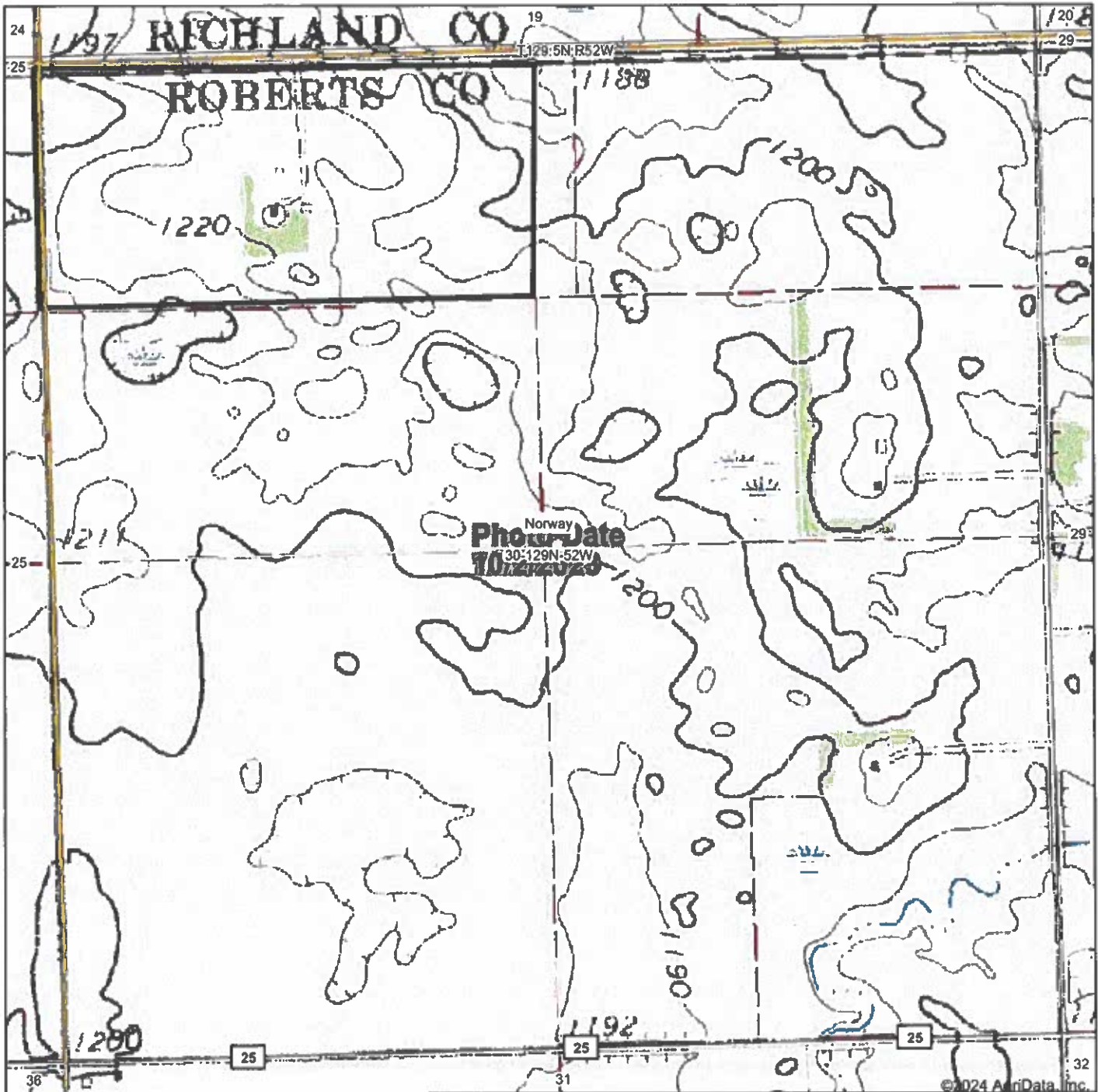
Code	Soil Description	Acres	Percent of field	Non-Irr Class *c	Productivity Index	Com Bu	Soybeans Bu	*n NCCPI Soybeans
J209C	Forman-Buse complex, 6 to 12 percent slopes, moderately eroded	41.84	55.3%	IIIe	65			57
J225B	Forman-Aastad complex, 1 to 4 percent slopes	27.99	37.1%	Ile	88			63
AcA	Aastad clay loam, 1 to 3 percent slopes	3.26	4.3%	IIc	94			72
Tk	Tonka silty clay loam, 0 to 1 percent slopes	1.51	2.0%	IVw	58			27
J225B	Forman-Aastad complex, 1 to 4 percent slopes	0.44	0.6%	Ile	88			64
AcA	Aastad clay loam, 1 to 3 percent slopes	0.27	0.4%	IIc	94			72
FrC	Forman-Aastad loams, 6 to 9 percent slopes	0.22	0.3%	IIIe	67	58	22	54
Weighted Average				2.60	74.9	0.2	0.1	*n 59.4

*n: The aggregation method is "Weighted Average using all components"

*c: Using Capabilities Class Dominant Condition Aggregation Method

Soils data provided by USDA and NRCS.

Topography Map



Map Center: 45° 55' 41.3, -97° 13' 4.57

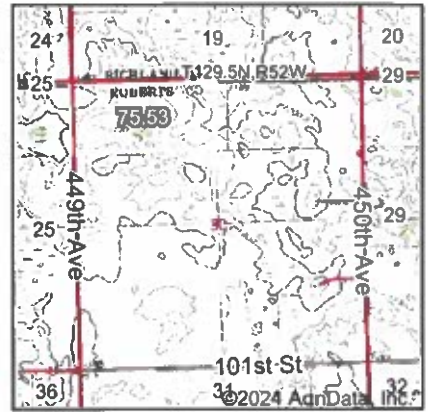


30-129N-52W
Roberts County
South Dakota



Field borders provided by Farm Service Agency as of 5/21/2008.

Wetlands Map



State: **South Dakota**
 Location: **30-129N-52W**
 County: **Roberts**
 Township: **Norway**
 Date: **7/18/2024**

Maps Provided By:

 CUSTOMIZED ONLINE MAPPING
 © AgriData, Inc. 2023 www.AgriDataInc.com



Classification Code	Type	Acres
PEM1C	Freshwater Emergent Wetland	0.19
PEM1A	Freshwater Emergent Wetland	0.00
Total Acres		0.19

Data Source: National Wetlands Inventory website. U.S. DoI, Fish and Wildlife Service, Washington, D.C. <http://www.fws.gov/wetlands/>

Field borders provided by Farm Service Agency as of 5/21/2008.

MAP NOT TO SCALE
THIS IS NOT AN OFFICIAL WETLAND MAP

