

Common Land Unit

 Rangeland PLSS
 Cropland CRP
 Tract Boundary

Wetland Determination Identifiers
 ● Restricted Use
 ▼ Limited Restrictions
 ■ Exempt from Conservation
 ■ Compliance Provisions



2015 Program Year

Map Created June 02, 2015

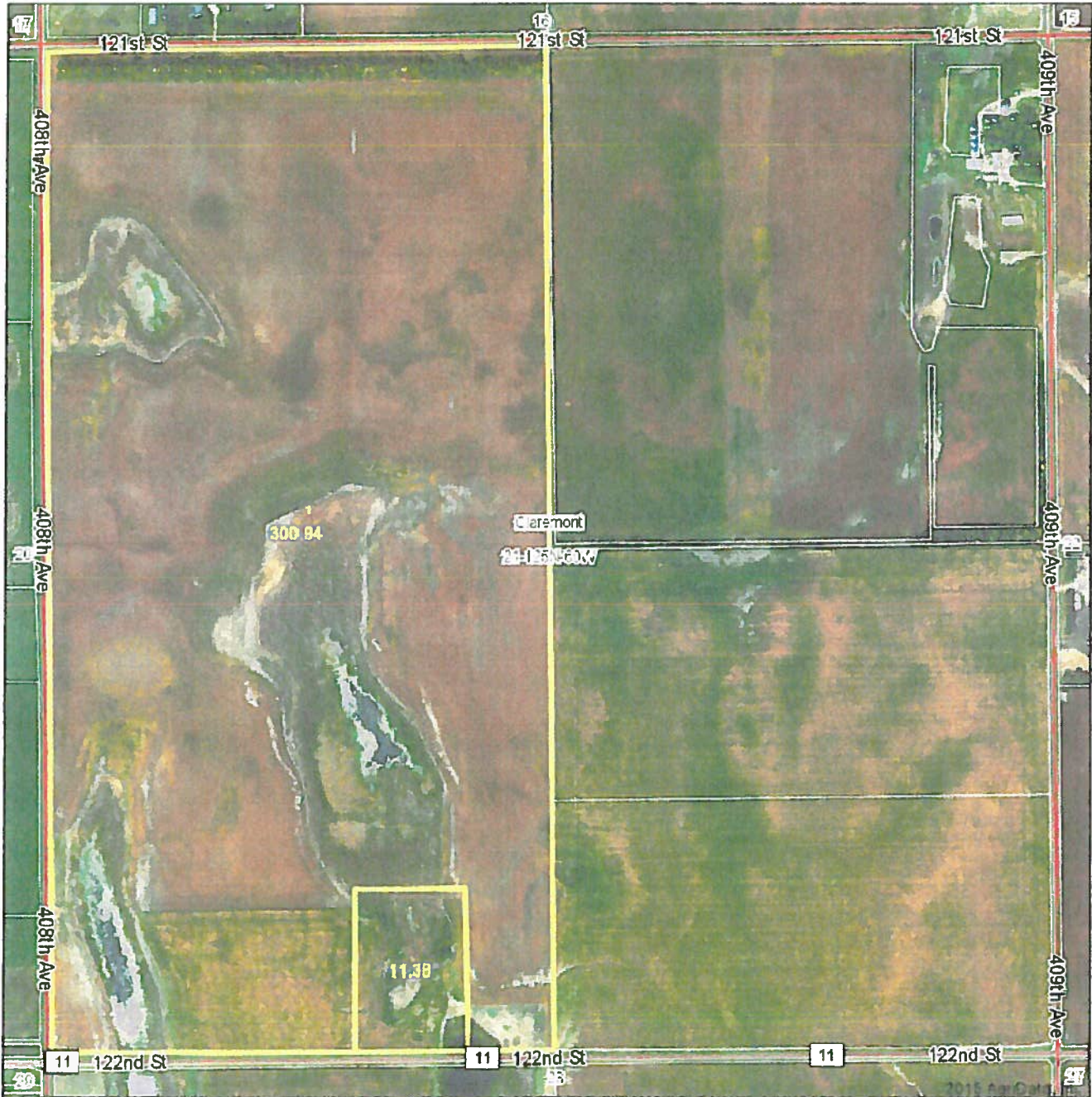
Farm 9965

21 -125N -60W

United States Department of Agriculture (USDA) Farm Service Agency (FSA) maps are for FSA Program administration only. This map does not represent a legal survey or reflect actual ownership; rather it depicts the information provided directly from the producer and/or National Agricultural Imagery Program (NAIP) imagery. The producer accepts the data 'as is' and assumes all risks associated with its use. USDA-FSA assumes no responsibility for actual or consequential damage incurred as a result of any user's reliance on this data outside FSA Programs. Wetland identifiers do not represent the size, shape, or specific determination of the area. Refer to your original determination (CPA-026 and attached maps) for exact boundaries and determinations or contact USDA Natural Resources Conservation Service (NRCS).

LAND USE MAP

Aerial Map



map center: 45° 37' 29.38, 98° 3' 6.64

scale: 9321



4/20/2015

Maps Provided By
surety
SOLUTIONS FOR THE COUNTRYSIDE
© AgriData, Inc. 2011 www.AgrDataInc.com

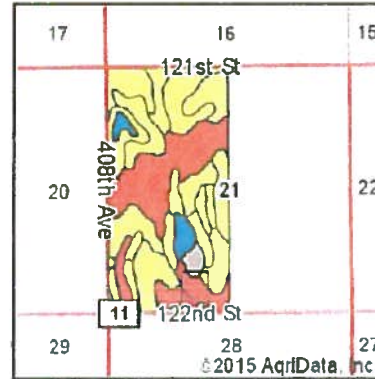
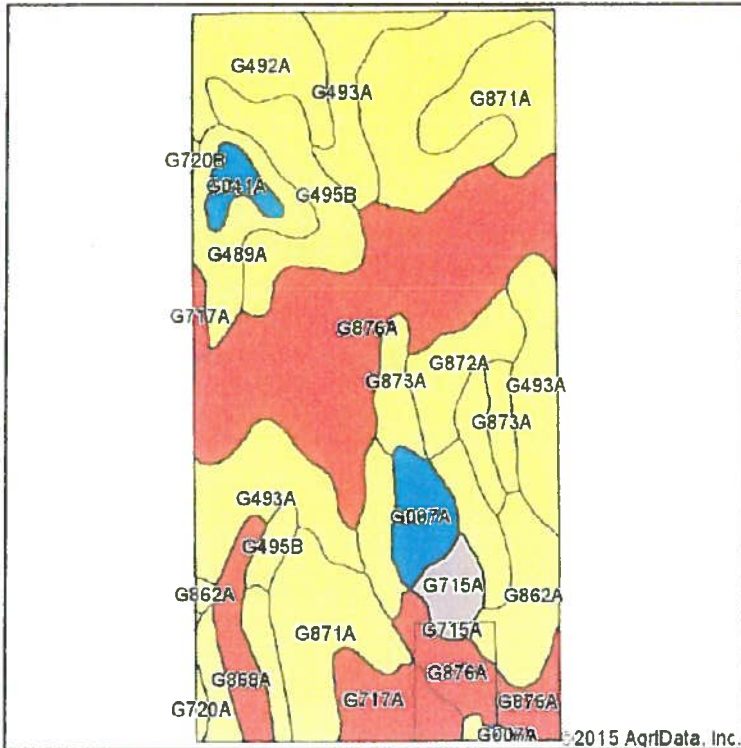
21-125N-60W
Brown County
South Dakota

Field borders provided by F

ty Field Office.

TRACT 3

Soil Map



State: **South Dakota**
 County: **Brown**
 Location: **21-125N-60W**
 Township: **Claremont**
 Acres: **312.32**
 Date: **4/20/2015**



Maps Provided By:

 CUSTOMER'S ONLINE MAPPING
 AgriData, Inc. 2014 www.AqrData.com

Soils data provided by USDA and NRCS

Area Symbol: SD013, Soil Area Version: 19

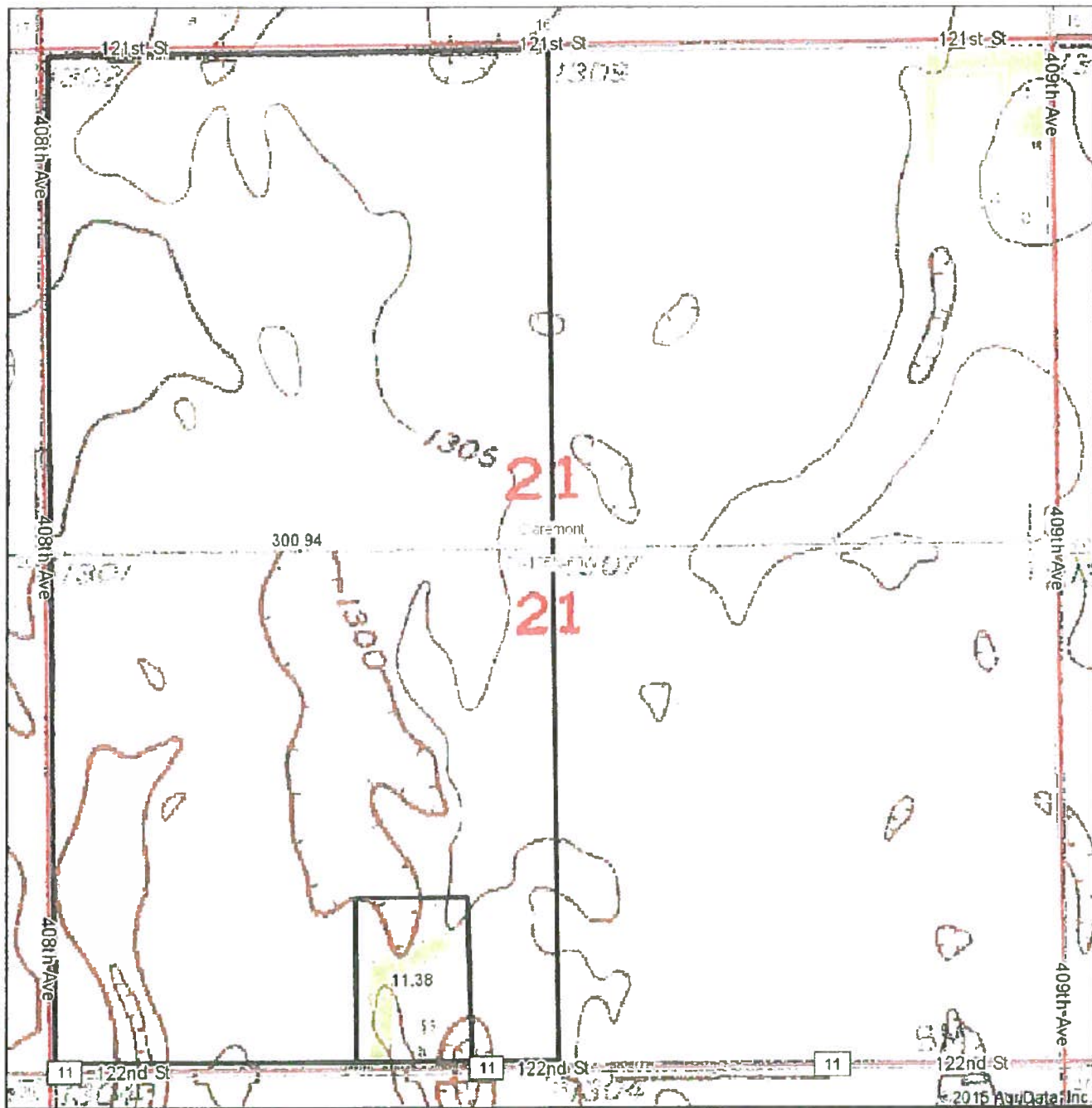
Code	Soil Description	Acres	Percent of field	Non-Irr Class Legend	Non-Irr Class	Productivity Index	Com.
G876A	Gardena-Turton very fine sandy loams, 0 to 2 percent slopes	74.62	24.0%		IIIc	70	50
G492A	Gardena very fine sandy loam, 0 to 2 percent slopes	41.35	13.2%		IIe	92	66
G493A	Eckman-Gardena very fine sandy loams, 0 to 2 percent slopes	39.67	12.6%		IIe	90	2
G871A	Beotia silt loam, 0 to 2 percent slopes	33.82	10.8%		IIc	83	6
G495B	Eckman-Zell very fine sandy loams, 2 to 6 percent slopes	26.31	8.4%		IIe	77	45
G872A	Beotia-Rondell silt loams, 0 to 2 percent slopes	15.77	5.0%		IIe	91	31
G862A	Harmony-Beotia silt loams, 0 to 2 percent slopes	12.85	4.1%		IIc	92	47
G489A	Gardena-Glyndon silt loams, 0 to 2 percent slopes	12.16	3.9%		IIe	89	3
G717A	Camtown-Turton loams, 0 to 2 percent slopes	11.42	3.7%		IIIc	61	45
G873A	Beotia-Winship silt loams, 0 to 2 percent slopes	8.91	2.9%		IIw	93	22
G007A	Tonka silt loam, silty substratum, 0 to 1 percent slopes	8.28	2.7%		I/w	43	
G431A	Bearden silt loam, 0 to 2 percent slopes	8.11	2.6%		IIe	81	
G868A	Winship-Tonka silt loams, 0 to 1 percent slopes	7.88	2.5%		II/w	71	48
G715A	Turton-Exline, loamy complex, 0 to 2 percent slopes	5.62	1.8%		Va	39	22
G041A	Borup loam, 0 to 1 percent slopes	4.20	1.3%		I/w	45	
G720A	Great Bend-Beotia silt loams, 0 to 2 percent slopes	0.69	0.3%		IIc	95	47
G720B	Great Bend-Beotia silt loams, 2 to 6 percent slopes	0.06	0.0%		IIe	63	42
Weighted Average						80.9	33

Area Symbol: SD013, Soil Area Version: 19

Soils data provided by USDA and NRCS

TRACT 3

Topography Map



map center: 45° 37' 29.38", 98° 3' 6.64"

scale: 9321

21-125N-60W
Brown County
South Dakota

Maps Provided By

CUSTOMER ONLINE MAPPING
© AgriData, Inc. 2011 www.AgrData.com



4/20/2015

Field borders provided by Farm S

d Office

TRACT 3