

TRACT 1

TRACT 2

1
61.85
NHSL
T 11808

4
12.02

T 10498



- Common Land Unit**
- Rangeland
 - Tract Boundary
 - Cropland
 - PLSS

- Wetland Determination Identifiers**
- Restricted Use
 - Limited Restrictions
 - Exempt from Conservation
 - Compliance Provisions



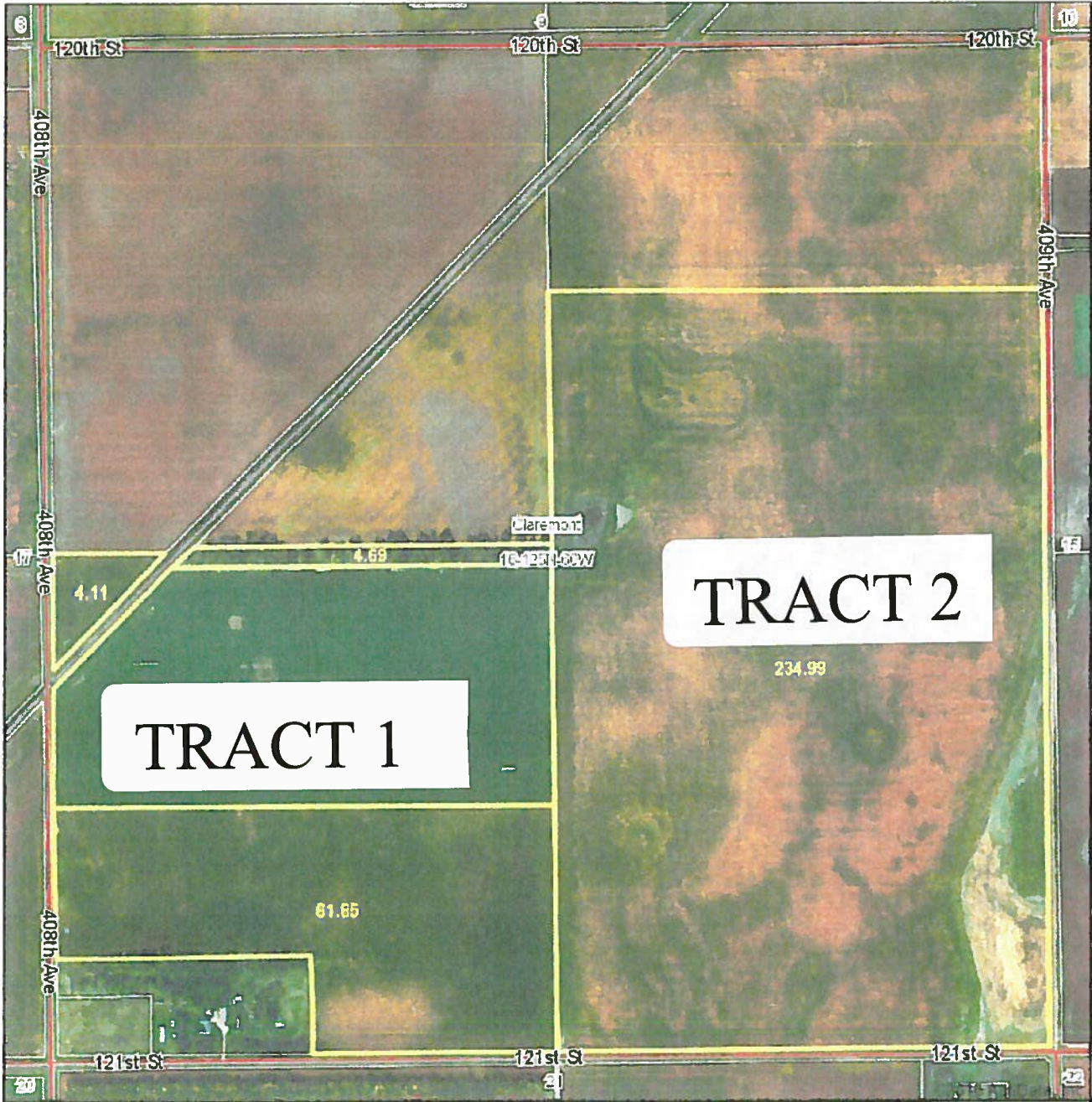
2015 Program Year
Map Created June 02, 2015
Farm 9965

16 -125N -60W

United States Department of Agriculture (USDA) Farm Service Agency (FSA) maps are for FSA Program administration only. This map does not represent a legal survey or reflect actual ownership; rather it depicts the information provided directly from the producer and/or National Agricultural Imagery Program (NAIP) imagery. The producer accepts the data 'as is' and assumes all risks associated with its use. USDA-FSA assumes no responsibility for actual or consequential damage incurred as a result of any user's reliance on this data outside FSA Programs. Wetland identifiers do not represent the size, shape, or specific determination of the area. Refer to your original determination (CPA-026 and attached maps) for exact boundaries and determinations or contact USDA Natural Resources Conservation Service (NRCS).

LAND USE MAP

Aerial Map

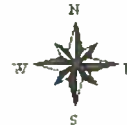


map center: 45° 38' 21.54, 98° 3' 6.7
scale: 9370

Maps Provided By

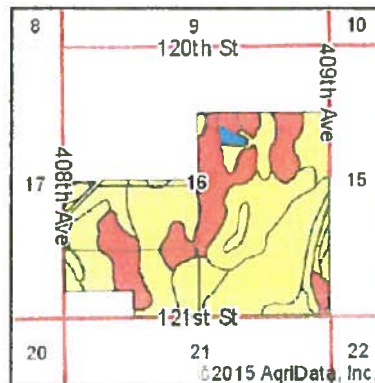
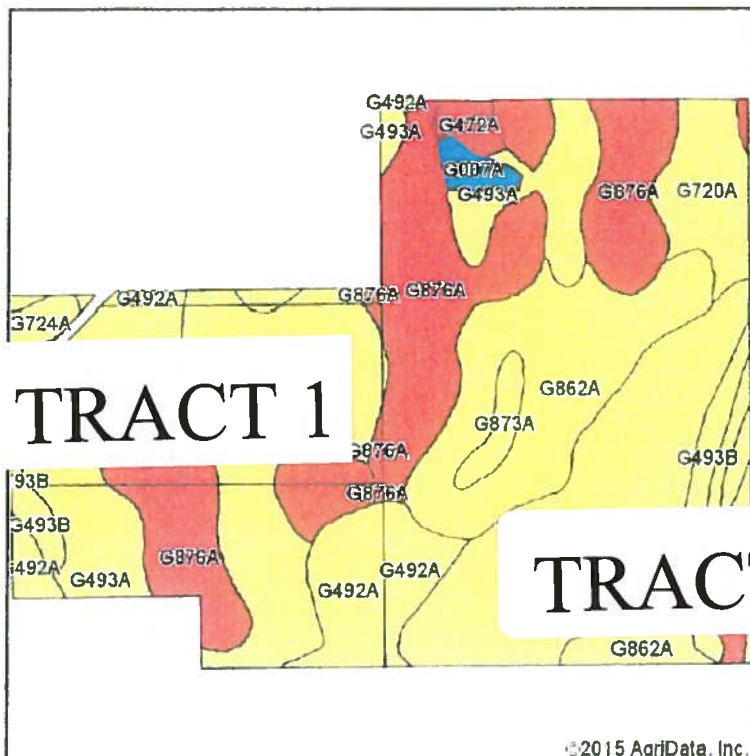
CUSTOMIZED ONLINE MAPPING
© AgriData, Inc. 2014 www.AgriDataInc.com

16-125N-60W
Brown County
South Dakota



4/20/2015

Soil Map



State: **South Dakota**
 County: **Brown**
 Location: **16-125N-60W**
 Township: **Claremont**
 Acres: **376.09**
 Date: **4/20/2015**



Soils data provided by USDA and NRCS

©2015 AgriData, Inc.

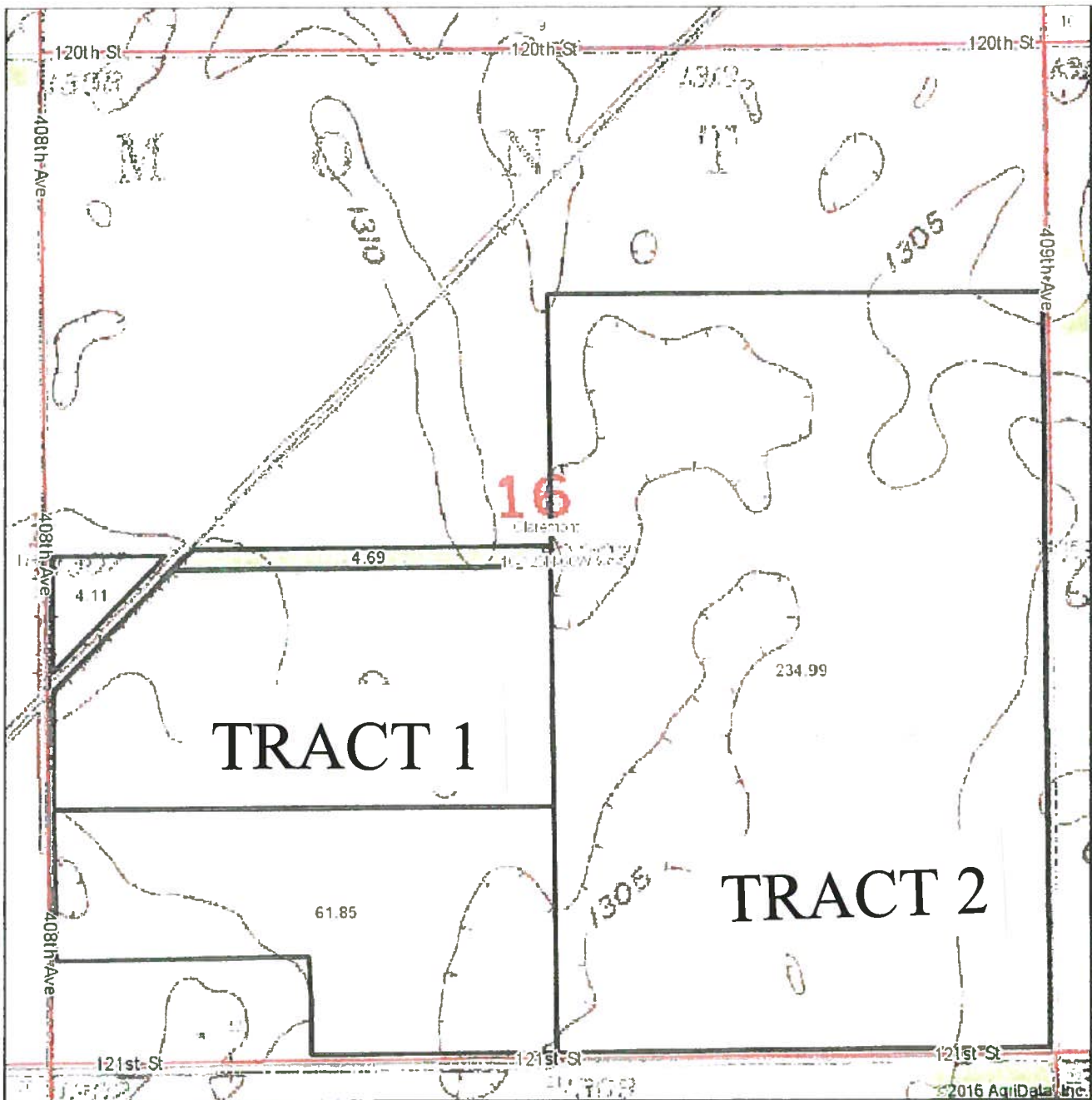
Area Symbol: SD013, Soil Area Version: 19

Code	Soil Description	Acres	Percent of field	Non-Irr Class Legend	Non-Irr Class	Productivity Index	Corn
G493A	Eckman-Gardena very fine sandy loams, 0 to 2 percent slopes	147.99	39.3%		Ile	90	2
G876A	Gardena-Turton very fine sandy loams, 0 to 2 percent slopes	78.53	20.9%		IIIs	70	50
G862A	Hamory-Beota silt loams, 0 to 2 percent slopes	49.54	13.2%		IIc	92	47
G492A	Gardena very fine sandy loam, 0 to 2 percent slopes	38.86	10.3%		Ile	92	66
G720A	Great Bend-Beota silt loams, 0 to 2 percent slopes	15.38	4.1%		IIc	95	47
G493B	Eckman-Gardena very fine sandy loams, 2 to 6 percent slopes	10.81	2.9%		Ile	84	40
G378B	Egeland, sandy substratum-Embsen fine sandy loams, 2 to 6 percent slopes	9.47	2.5%		IIle	66	5
G873A	Bectia-Winship silt loams, 0 to 2 percent slopes	7.02	1.9%		IIw	93	22
G868A	Winship-Tonka silt loams, 0 to 1 percent slopes	4.73	1.3%		IIw	71	46
G007A	Tonka silt loam, silty substratum, 0 to 1 percent slopes	3.38	0.9%		IVw	43	
G472A	Aberdeen-Nahon silty clay loams, 0 to 2 percent slopes	3.26	0.9%		IIIs	59	36
G724A	Great Bend-Putney silt loams, 0 to 2 percent slopes	2.97	0.8%		Ilo	87	70
G872A	Bectia-Randell silt loams, 0 to 2 percent slopes	2.47	0.7%		Ile	91	31
G720B	Great Bend-Beota silt loams, 2 to 6 percent slopes	1.68	0.4%		Ile	88	42
Weighted Average						84.6	29.7

Area Symbol: SD013, Soil Area Version: 19

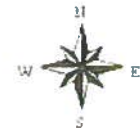
Soils data provided by USDA and NRCS.

Topography Map



map center: 45° 38' 21.54, 98° 3' 6.7
scale: 9370

16-125N-60W
Brown County
South Dakota



4/20/2015

Maps Provided By
surety
CUSTOMER DRIVING MAPPING
© AgriData, Inc. 2011 www.AgrDataInc.com

Field borders provided by Farm Service Agency as of 5/21/2006. Aerial photography provided by Aerial Photography Field Office.