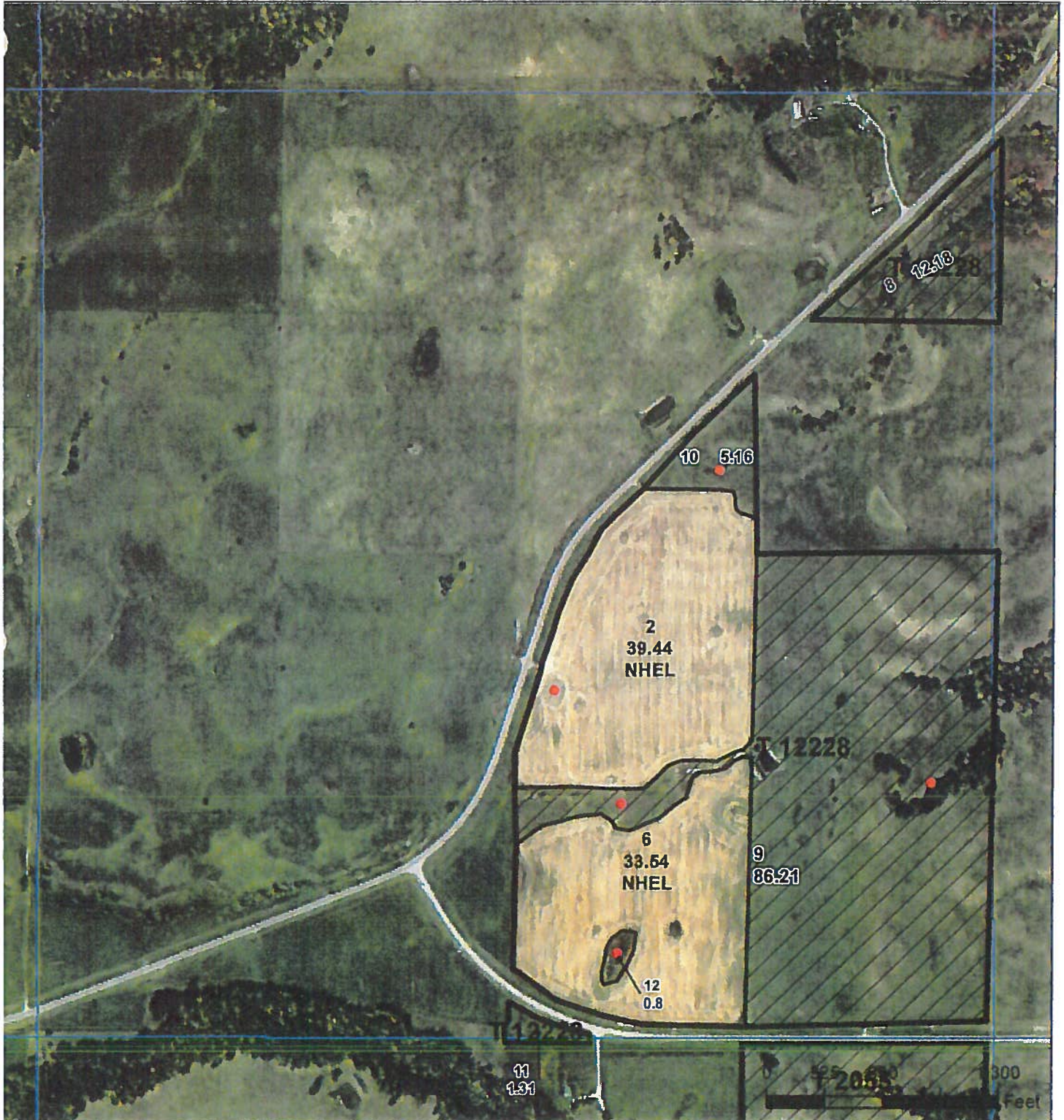


# TRACT 1



Common Land Unit  Other Ag  Cropland  Rangeland  Tract Boundary

Wetland Determination Identifiers  
 Restricted Use  
 Limited Restrictions  
 Exempt from Conservation  
 Compliance Provisions



# TRACT 1

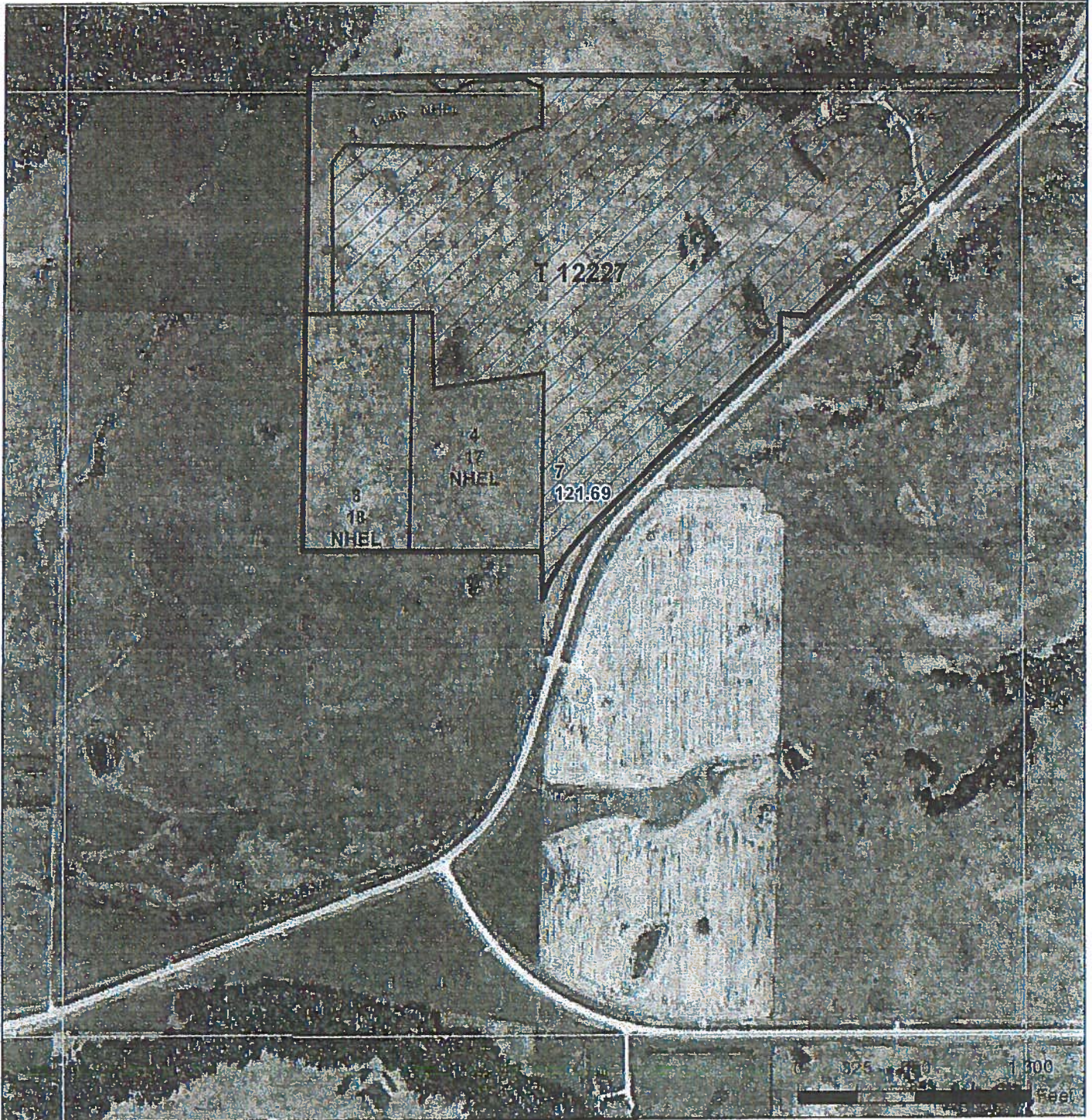
This map is not a legal survey. It is provided for informational purposes only. The producer accepts the data 'as is' and any user's reliance on this data outside FSA programs. Wetland identifiers do not represent the size, shape, or specific determination of wetlands and determinations or contact USDA Natural Resources Conservation Service (NRCS).

2016 Program Year  
 Map Created April 08, 2016

Farm 9275

20-124-51

This map does not represent a legal survey or reflect actual wetland conditions. The producer accepts the data 'as is' and any user's reliance on this data outside FSA programs (CPA-026 and attached maps) for exact



**Common Land Unit**  
 Common Land Unit  
 Cropland

Rangeland  
 Tract Boundary  
 PLSS

**Wetland Determination Identifiers**

- Restricted Use
- ▽ Limited Restrictions
- Exempt from Conservation Compliance Provisions



United States Department of Agriculture (USDA) Farm Service Agency (FSA) Farm Security Administration (FSA) Farm Ownership (FO) Program. This map is based on information provided by the landowner. The user assumes all risks associated with its use. USDA-FSA assumes no liability for any errors or omissions in this map. Wetland identifiers do not represent the size, boundaries and determinations or contact USDA Natural Resources Conservation Service (NRCS) for more information.

2016 Program Year

Map Created April 08, 2016

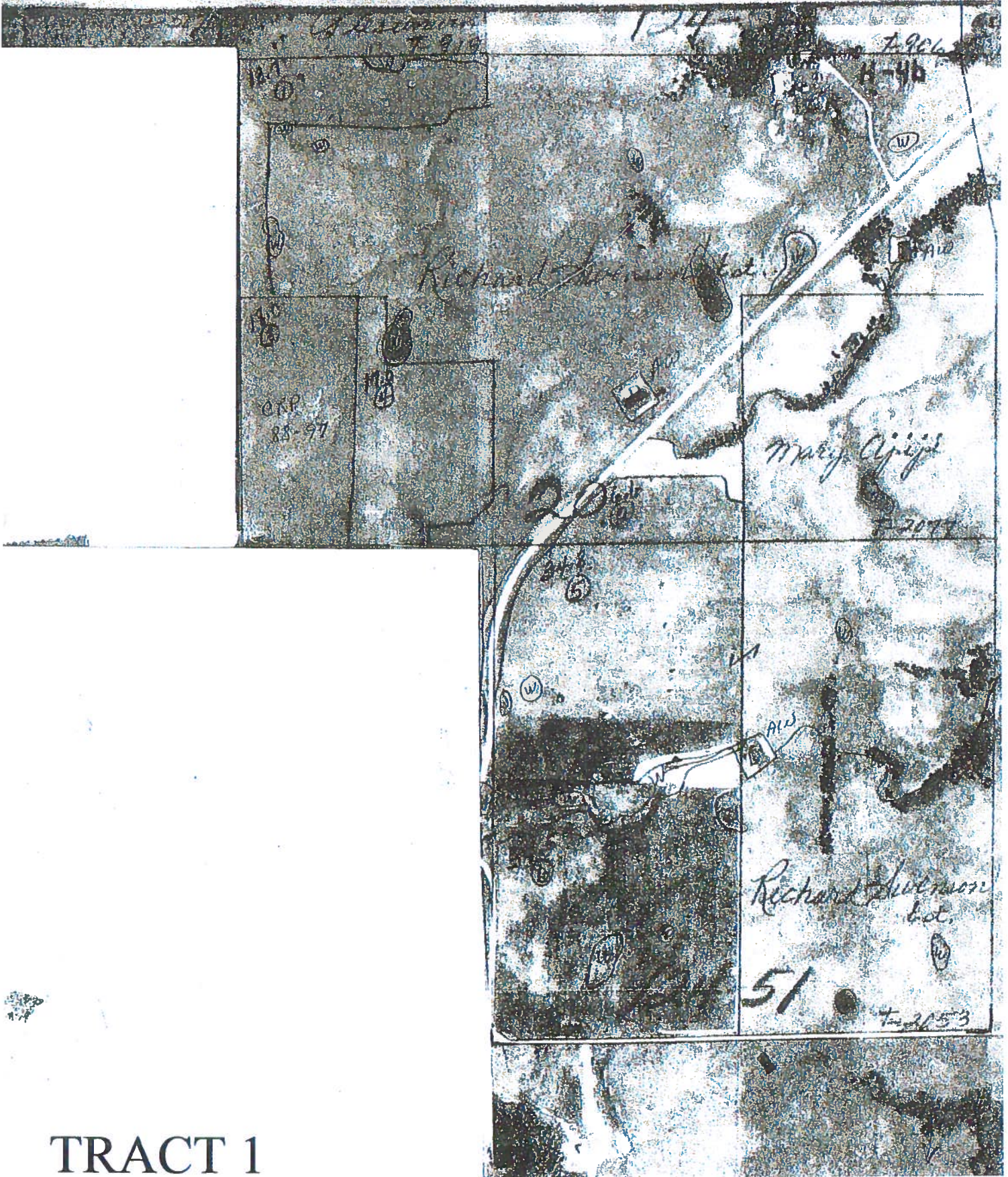
Farm 9274

20-124-51

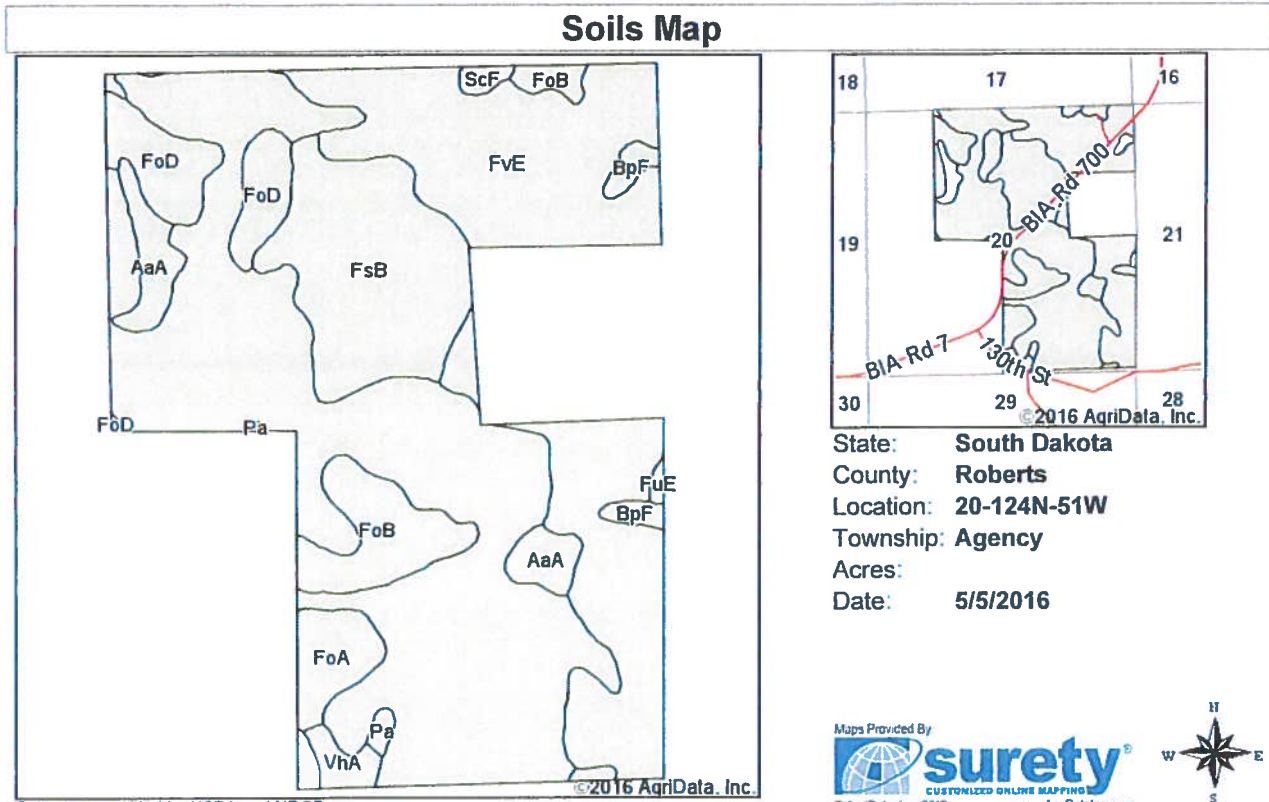
TRACT 1

This map does not represent a legal survey or reflect actual boundaries. The user assumes the producer accepts the data 'as is' and does not warrant or accept liability for any errors or omissions in this data outside FSA Form 126 and attached maps) for exact boundaries.

NOT TO SCALE



TRACT 1



Area Symbol: SD109, Soil Area Version: 16

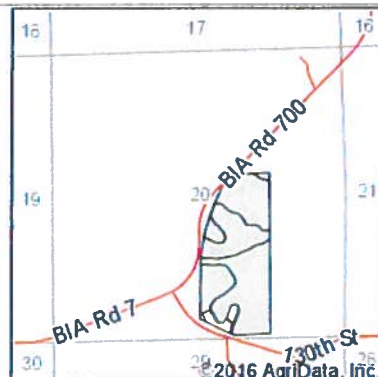
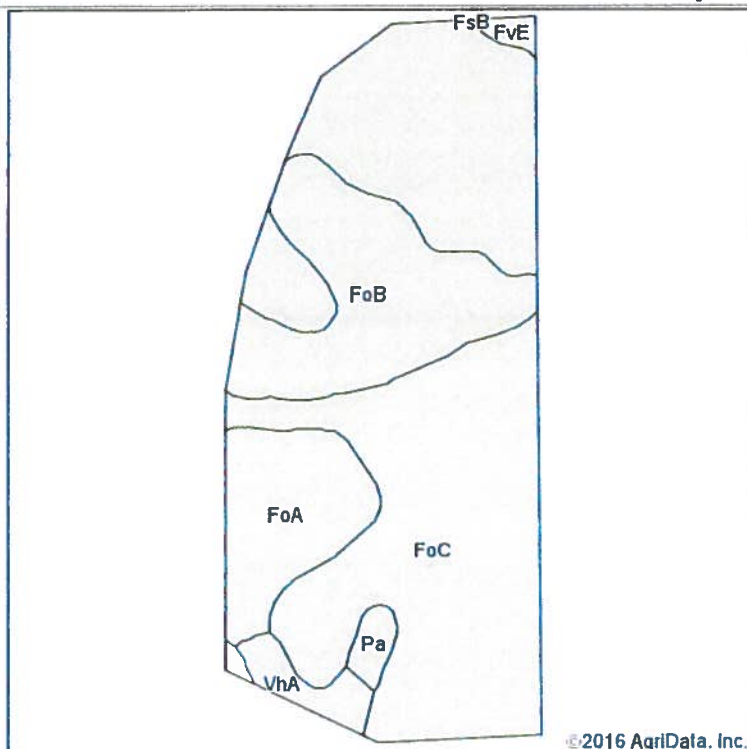
Code	Soil Description	Acres	Percent of field	Non-Irr Class *c	Productivity Index	Corn	Soybeans
FoC	Forman-Aastad loams, 6 to 9 percent slopes	153.07	42.4%	IIIe	69	69	26
FvE	Forman-Buse stony complex, 9 to 40 percent slopes	98.24	27.2%	VIIIs	25	17	7
FsB	Forman-Aastad stony complex, 0 to 9 percent slopes	43.78	12.1%	VIIIs	26	26	10
FoB	Forman-Aastad loams, 2 to 6 percent slopes	17.97	5.0%	IIe	82	79	30
FoD	Forman-Aastad loams, 9 to 15 percent slopes	17.88	5.0%	IVe	56	58	22
AaA	Aastad loam, 0 to 2 percent slopes	10.91	3.0%	Is	92	92	34
FoA	Forman-Aastad loams, 0 to 2 percent slopes	8.74	2.4%	Is	87	84	32
BpF	Buse-Forman loams, 20 to 40 percent slopes	3.64	1.0%	VIIe	20	6	2
VhA	Vallers-Hamerly loams, 0 to 2 percent slopes	3.44	1.0%	IVw	57	58	19
ScF	Sieche loam, 15 to 40 percent slopes	1.44	0.4%	VIe	16	12	4
Pa	Parneil silty clay loam	1.17	0.3%	Vw	31	29	11
FuE	Forman-Buse loams, 15 to 25 percent slopes	0.62	0.2%	VIe	29	22	8
<b>Weighted Average</b>					<b>51.9</b>	<b>49.5</b>	<b>18.8</b>

\*c: Using Capabilities Class Dominant Condition Aggregation Method

Soils data provided by USDA and NRCS

# TRACT 1

### Soils Map



State: **South Dakota**  
 County: **Roberts**  
 Location: **20-124N-51W**  
 Township: **Agency**  
 Acres:  
 Date: **5/5/2016**



Soils data provided by USDA and NRCS.

©2016 AgriData, Inc.

Area Symbol: SD109, Soil Area Version: 16

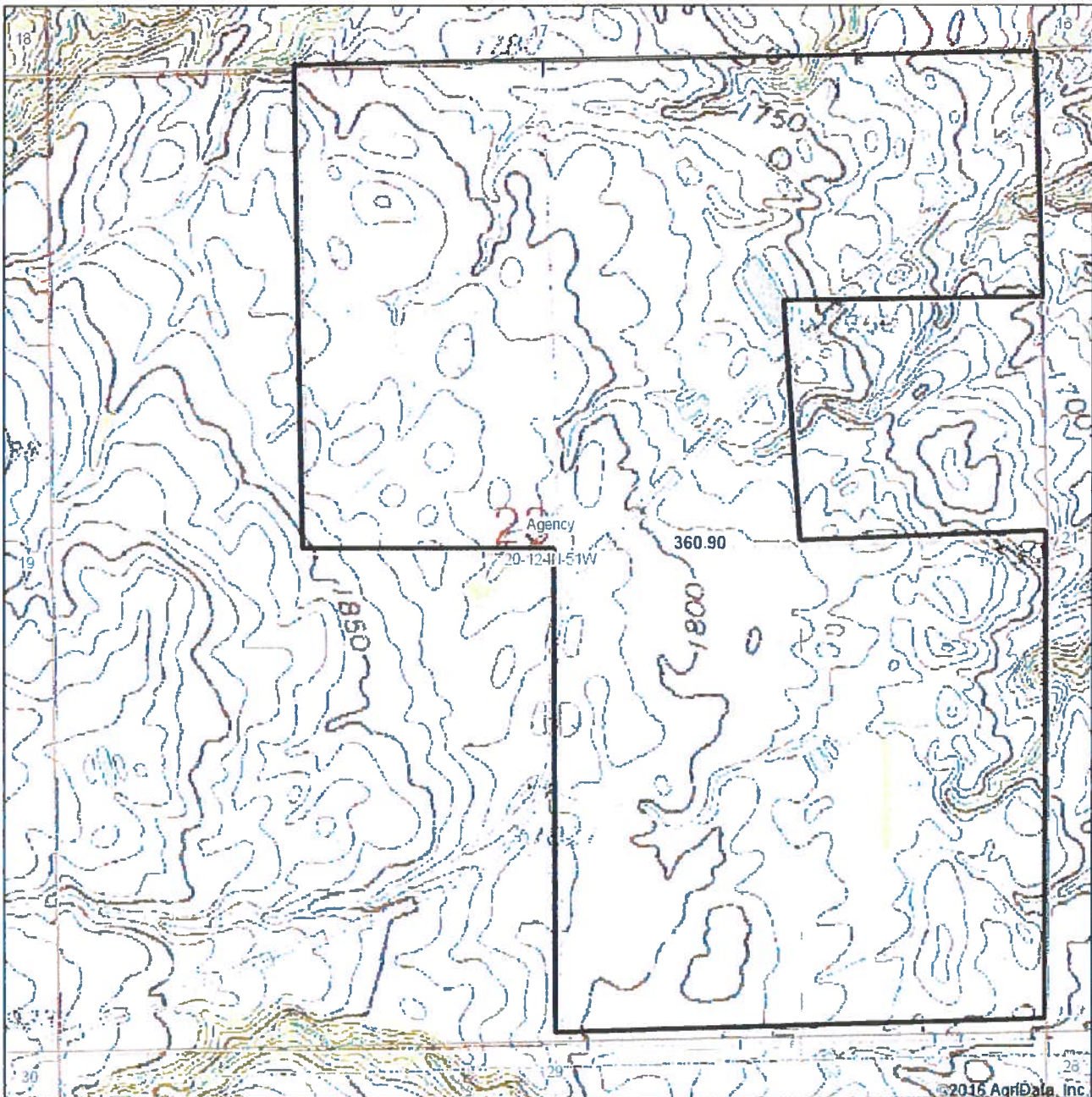
Code	Soil Description	Acres	Percent of field	Non-Irr Class *c	Productivity Index	Corn	Soybeans
FoC	Forman-Aastad loams, 6 to 9 percent slopes	49.45	64.3%	IIIe	69	69	26
FoB	Forman-Aastad loams, 2 to 6 percent slopes	15.06	19.6%	Ile	82	79	30
FoA	Forman-Aastad loams, 0 to 2 percent slopes	8.67	11.3%	Is	87	84	32
VhA	Vallers-Hamerly loams, 0 to 2 percent slopes	2.11	2.7%	IVw	57	58	19
Pa	Parnell silty clay loam	1.04	1.4%	Vw	31	29	11
FvE	Forman-Buse stony complex, 9 to 40 percent slopes	0.58	0.8%	VIIIs	25	17	7
<b>Weighted Average</b>					<b>72.4</b>	<b>71.4</b>	<b>26.9</b>

\*c: Using Capabilities Class Dominant Condition Aggregation Method

Soils data provided by USDA and NRCS

# TRACT 1

Topography Map



map center: 45° 30' 27.31, 97° 4' 17.7

0ft 843ft 1686ft

**20-124N-51W**  
**Roberts County**  
**South Dakota**



5/5/2016



Field borders provided by Farm Service Agency as of 5/21/2008

# TRACT 1





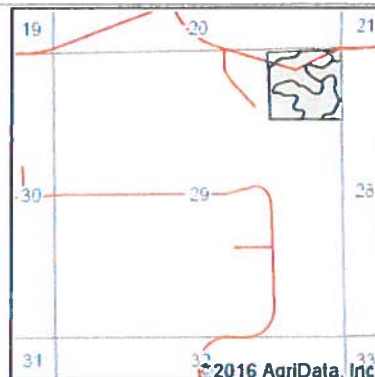
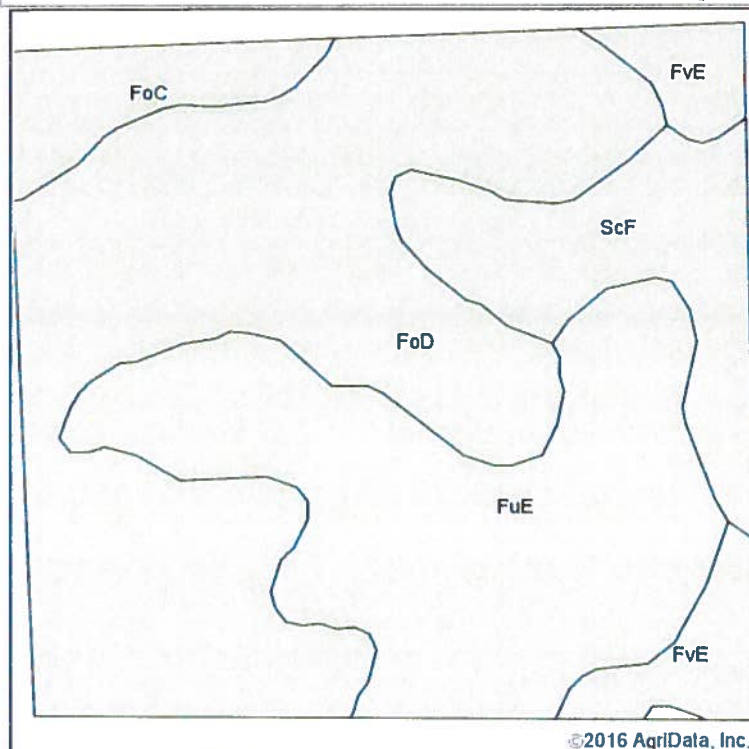
LE



AD  
H-4a  
W  
Richard L. Linneman  
Est.  
T-2055

TRACT 1

### Soils Map



State: **South Dakota**  
 County: **Roberts**  
 Location: **29-124N-51W**  
 Township: **Agency**  
 Acres:   
 Date: **5/5/2016**



Soils data provided by USDA and NRCS

Area Symbol: SD109, Soil Area Version: 16

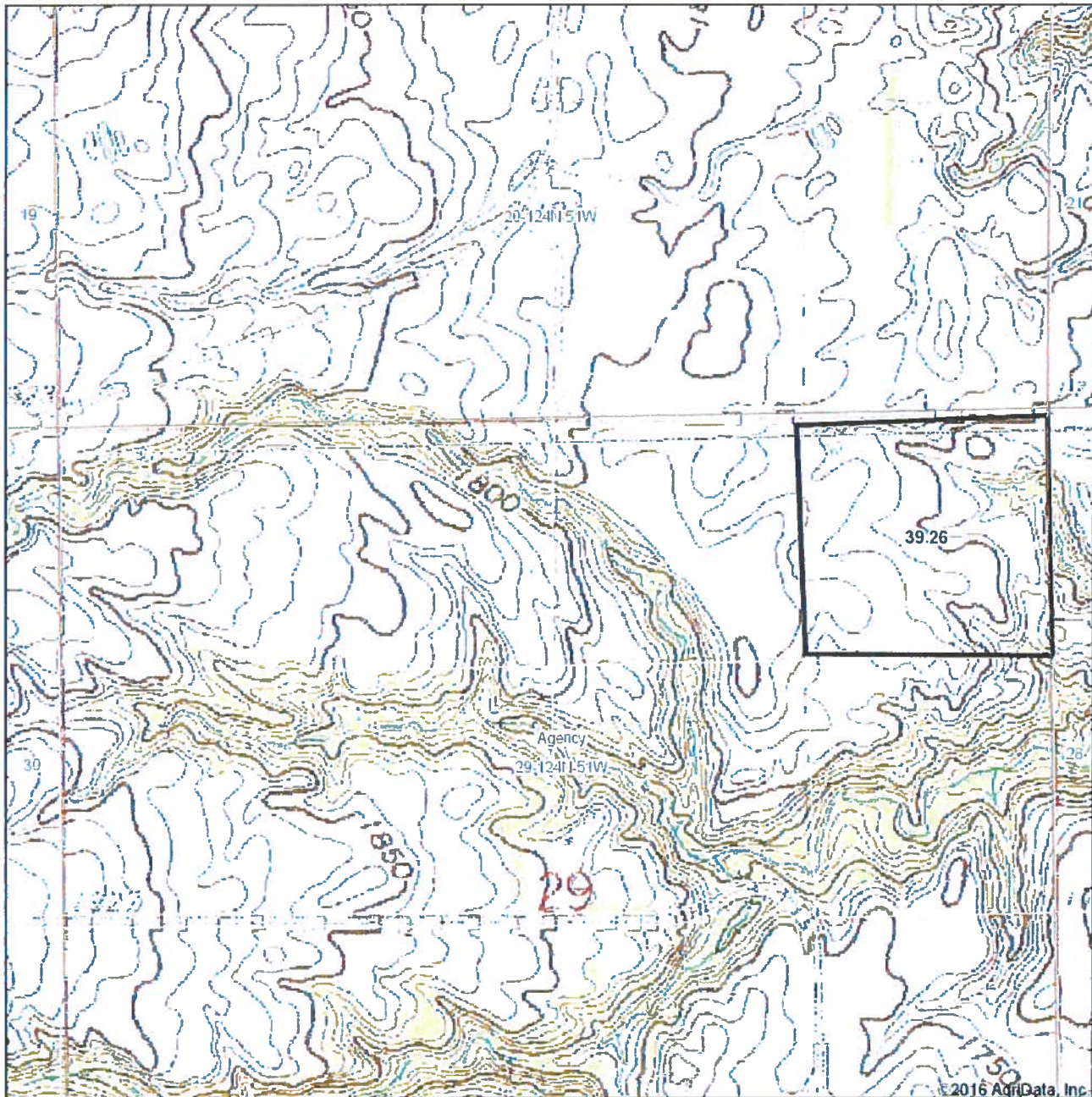
Code	Soil Description	Acres	Percent of field	Non-Irr Class *c	Productivity Index	Corn	Soybeans
FoD	Forman-Aastad loams, 9 to 15 percent slopes	18.45	47.0%	IVe	56	58	22
FuE	Forman-Buse loams, 15 to 25 percent slopes	11.89	30.3%	Vle	29	22	8
ScF	Sieche loam, 15 to 40 percent slopes	4.60	11.7%	Vle	16	12	4
FvE	Forman-Buse stony complex, 9 to 40 percent slopes	2.33	5.9%	Vlls	25	17	7
FoC	Forman-Aastad loams, 6 to 9 percent slopes	1.99	5.1%	IIle	69	69	26
<b>Weighted Average</b>					<b>42</b>	<b>39.8</b>	<b>15</b>

\*c: Using Capabilities Class Dominant Condition Aggregation Method

Soils data provided by USDA and NRCS

# TRACT 1

### Topography Map



© 2016 AgriData, Inc.

map center: 45° 29' 54.19, 97° 4' 18.68

0ft 840ft 1680ft

**29-124N-51W**  
**Roberts County**  
**South Dakota**



5/5/2016



Field borders provided by Farm Service Agency as of 5/21/2008

# TRACT 1