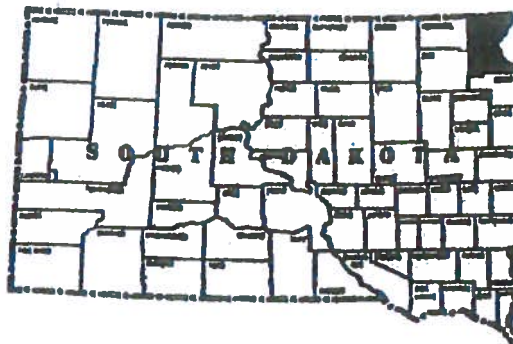


Roberts County, SD

County Seat Sisseton, SD

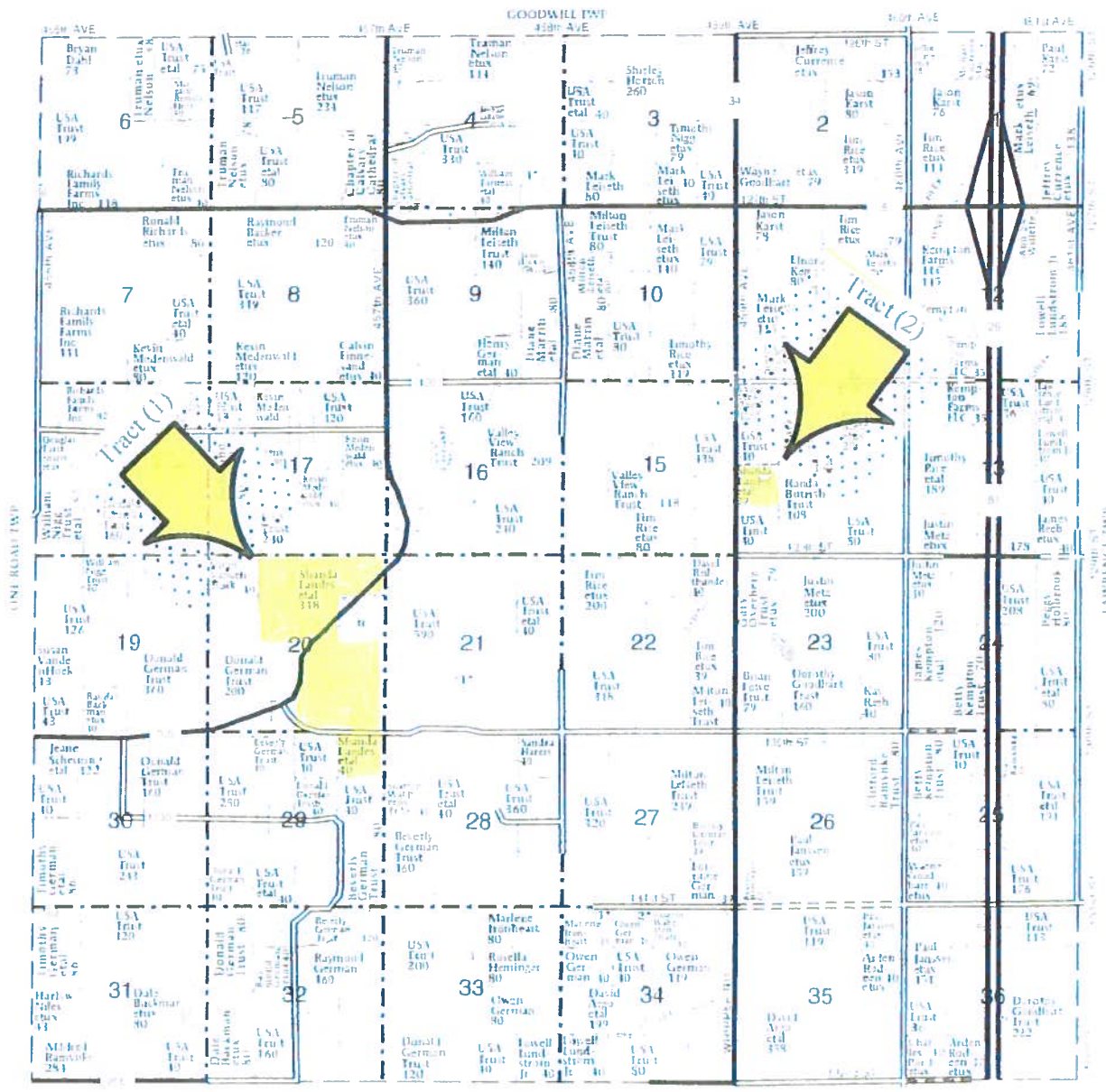
T-129-N	Norway Pages 68-69	Minnesota Pages 66-67	Lion Pages 69-71	Victor Pages 62-63	White Rock "W" Pages 66-67	White Rock "E" Pages 64-65
T-128-N						
T-127-N	Beulah Pages 26-27	Enterprise Pages 34-35	Hart Pages 62-63	Huron "W" Pages 46-47	Huron "E" Pages 44-45	
T-126-N	Long Hollow Pages 64-65	Sisseton Pages 74-75	Grant Pages 42-43	Dryden Pages 20-21		
T-125-N	Dry Wood Lake Pages 30-31	Goodwill Pages 40-41	Easton Pages 32-33			
T-124-N	One Road Pages 70-71	Agency Pages 20-21	Lawrence Pages 60-67	Becker Pages 24-25		
T-123-N	Alta Pages 22-23	Spring Grove Pages 76-78	Lee Pages 66-68	Lake Pages 64-65		
T-122-N	Orlay Pages 72-73	Summit Pages 60-61	Springdale Pages 76-77	Garfield Pages 36-37	Genesee Pages 38-39	Lockwood Pages 62-63
	R-52-W	R-51-W	R-50-W	R-49-W	R-48-W	R-47-W



T-124-N

AGENCY PLAT

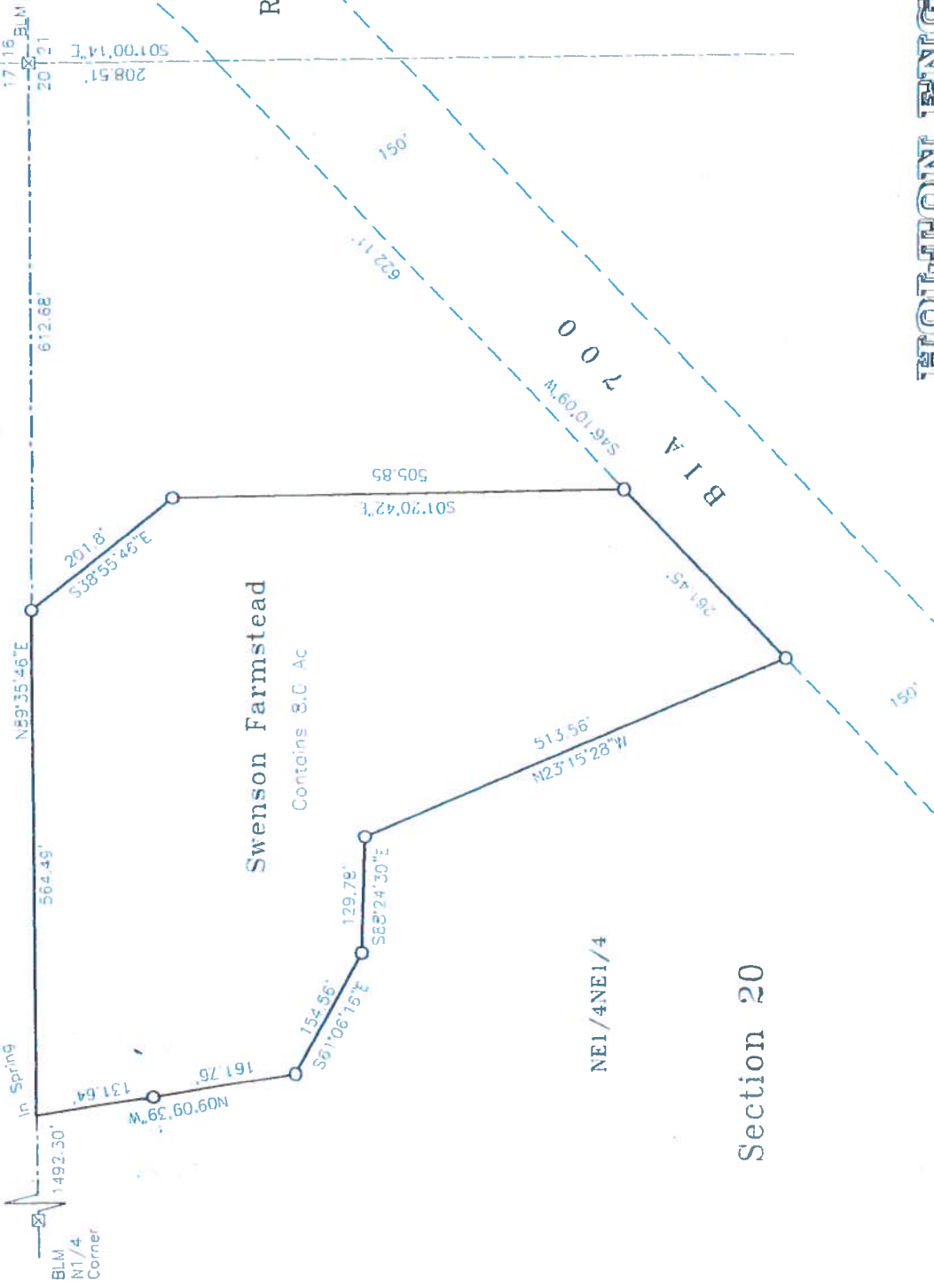
R-51-W



SPRING GROVE EAST

PLAT OF:

Swenson Farmstead
in the NE1/4NE1/4 of
Section 20, T124N,
R51W of the 5th P.M.,
Roberts County, South Dakota



*Survey of Section
NE1/4, 2013*



SCALE: 1" = 150'
○ = CAPPED IRON PIN SET
□ = RECOVERED MONUMENT

HOLLTON ENGINEERING INC.

DRAWN 11/7/13 FIELD: 11/6/13 512 VETERANS AVE. SISSETON, SD PH. 1-605-698-3850 | 2012451-P369

PAR 2 11-14