

COTEAU LAND COMPANY, LLC



Call Gordon Nielsen (605) 742-0416

Call Larry Lekness (605) 880-5933

Call Gary Hanson (605) 268-0448

PO Box 86, Sisseton, South Dakota 57262

Go to www.coteauland.com for more details

Roberts County Real Estate for Sale

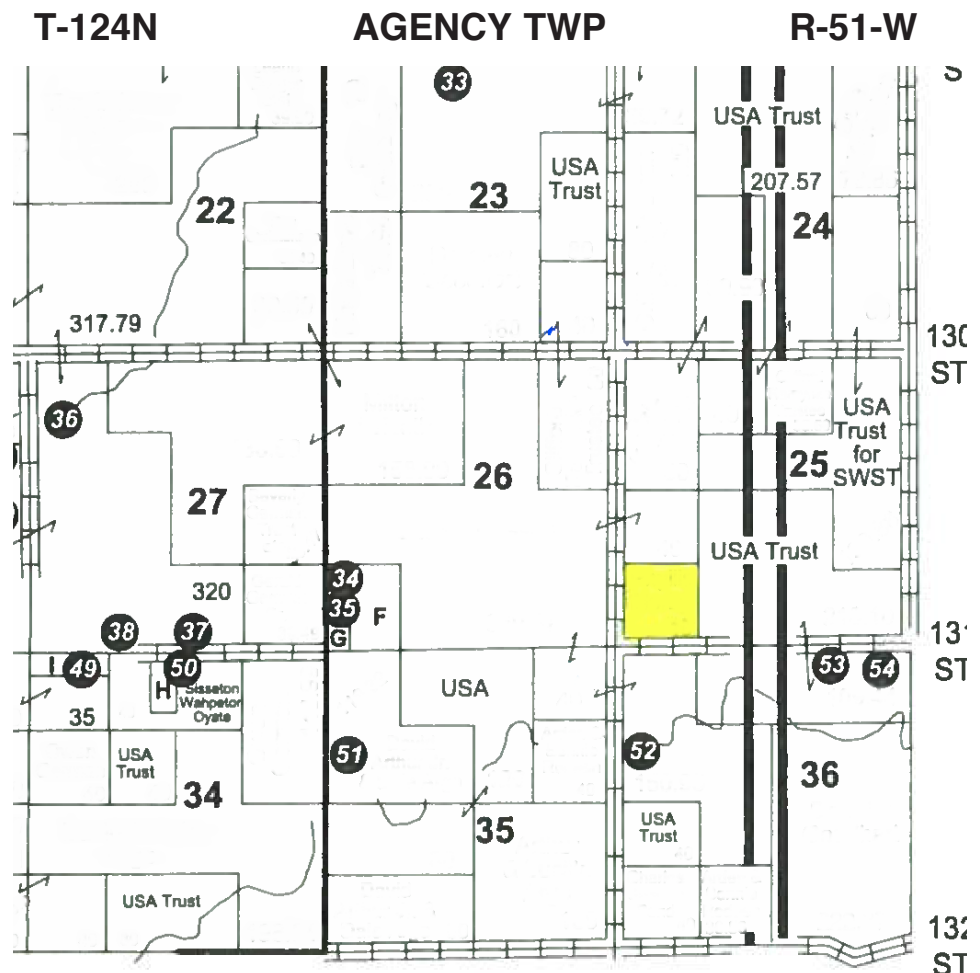
40 (+/-) acres of Agency Township, Roberts County, South Dakota Real Estate for sale. Property is located approximately 4 miles South of the Peever Exit on I-29. Nice tract of tillable acres with good soils.

Call Coteau Land Company for an informational packet.

Legal: SW1/4SW1/4 Section 25-124-51 Agency Township, Roberts County, South Dakota

SALE FORMAT: Preliminary written bids will be accepted by Coteau Land Company, LLC, 520 2nd Avenue East, PO Box 86, Sisseton, South Dakota, until 4:00 o'clock p.m. on **June 14, 2013**. The top bidders will be invited to attend a private bidders meeting to raise their bids. The private bidders meeting will be held at Delaney, Nielsen & Sannes, P.C. law offices, 520 2nd Ave. E., Sisseton, South Dakota on **June 19, 2013**. Seller reserves the right to invite additional bidders. Any additional terms and conditions of sale shall be announced at the time of bidders meeting and such terms and conditions shall take precedence over this written notice. Seller reserves the right to reject any or all bids and to waive any irregularities in the proceedings.

Real estate is subject to a lease for 2013 crop year. New owner to receive 2013 rent. Potential Buyers may contact Coteau Land Company to enter the property.



The information contained herein and in any advertisement has been given to us by the Roberts County Assessor, Roberts County Register of Deeds and Roberts County Treasurer and is believed by the Seller and its agents to be true. Nonetheless, it is your responsibility as Buyer to research all information to your own satisfaction.