



Common Land Unit

- CRP
- Non-Cropland
- Cropland
- Tract Boundary
- PLSS

Wetland Determination Identifiers

- Restricted Use
- Limited Restrictions
- Exempt from Conservation
- Compliance Provisions

Tract Cropland Total: 71.90 acres

2025 Program Year

Map Created March 31, 2025

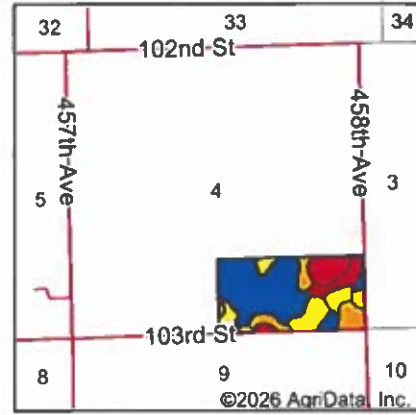
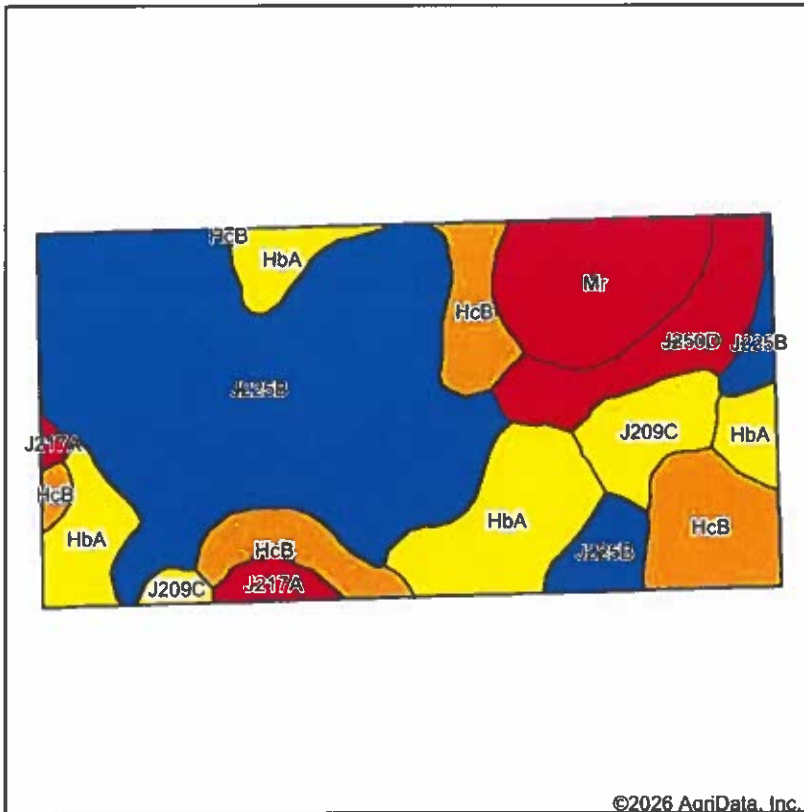
Farm 10315

Tract 4864

4-128-51

United States Department of Agriculture (USDA) Farm Service Agency (FSA) maps are for FSA Program administration only. This map does not represent a legal survey or reflect actual ownership; rather it depicts the information provided directly from the producer and/or National Agricultural Imagery Program (NAIP) imagery. The producer accepts the data 'as is' and assumes all risks associated with its use. USDA-FSA assumes no responsibility for actual or consequential damage incurred as a result of any user's reliance on this data outside FSA Programs. Wetland identifiers do not represent the size, shape, or specific determination of the area. Refer to your original determination (CPA-026 and attached maps) for exact boundaries and determinations or contact USDA Natural Resources Conservation Service (NRCS).

Soils Map



State: **South Dakota**
 County: **Roberts**
 Location: **4-128N-51W**
 Township: **Minnesota**
 Acres:
 Date:



Soils data provided by USDA and NRCS.

©2026 AgriData, Inc.

Area Symbol: SD109, Soil Area Version: 26

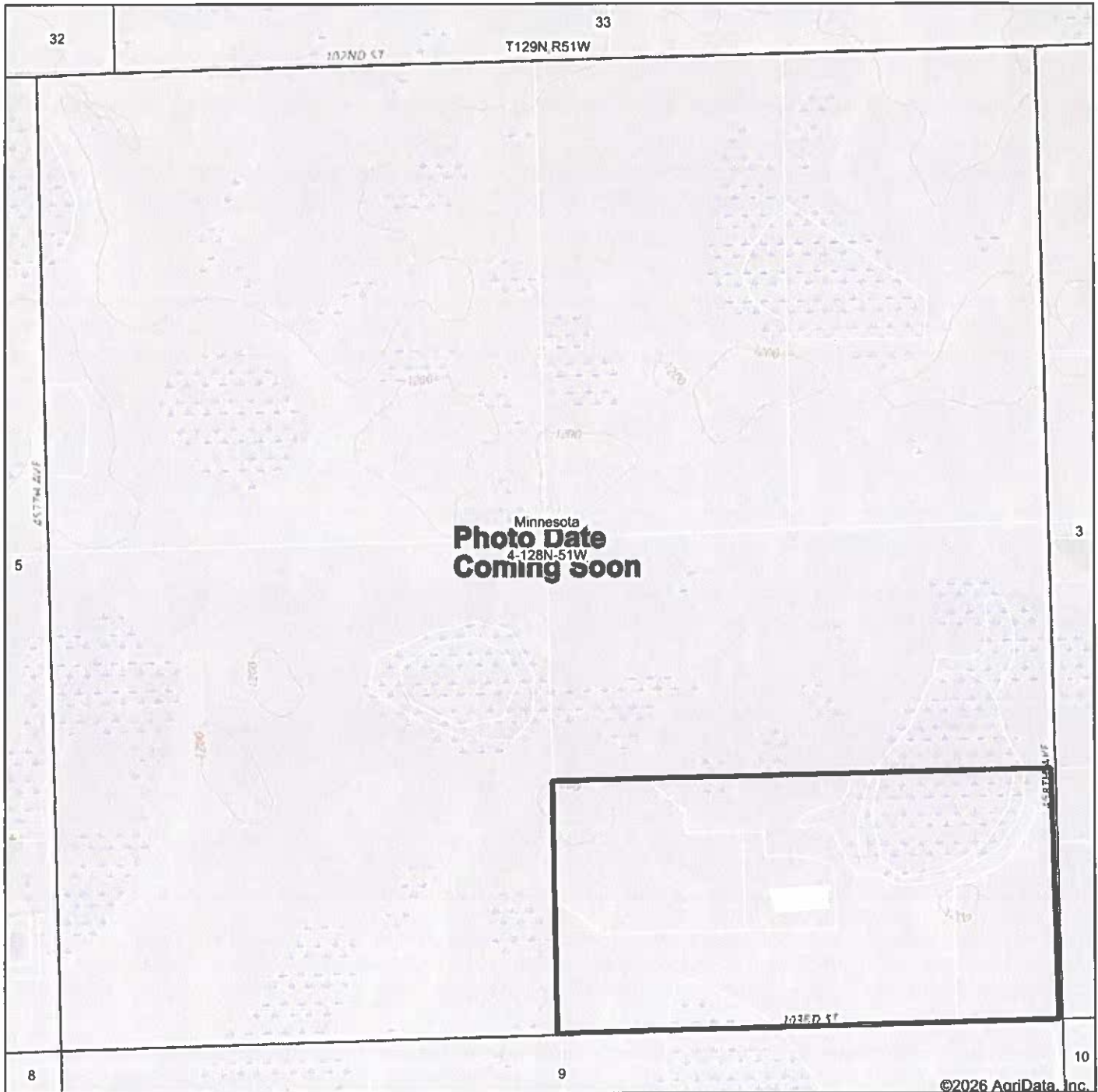
Code	Soil Description	Acres	Percent of field	PI Legend	Non-Irr Class *c	Productivity Index	*n NCCPI Soybeans	
J225B	Forman-Aastad complex, 1 to 4 percent slopes	38.03	47.0%	■	Ile	86	63	
HbA	Hamerly-Tonka complex, 0 to 3 percent slopes	12.76	15.7%	■	Ils	69	44	
HcB	Hamerly-Vallers loams, 2 to 4 percent slopes	11.22	13.8%	■	Ils	71	54	
Mr	Southam silty clay loam, 0 to 1 percent slopes	7.61	9.4%	■	VIIIw	10	9	
J250D	Forman-Buse complex, 12 to 20 percent slopes, moderately eroded	5.74	7.1%	■	IVe	50	52	
J209C	Forman-Buse complex, 6 to 12 percent slopes, moderately eroded	4.13	5.1%	■	IIIe	65	57	
J217A	Parnell silty clay loam, frequently ponded, 0 to 1 percent slopes	1.55	1.9%	■	Vw	31	10	
Weighted Average						2.81	69.4	*n 51.6

*n: The aggregation method is "Weighted Average using all components"

*c: Using Capabilities Class Dominant Condition Aggregation Method

Soils data provided by USDA and NRCS.

Topography Map



©2026 AgriData, Inc.

Map Center: 45° 53' 58.04, -97° 3' 9.16

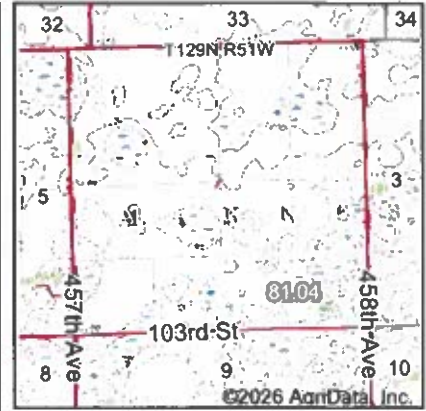


4-128N-51W
Roberts County
South Dakota



Field borders provided by Farm Service Agency as of 5/21/2008.

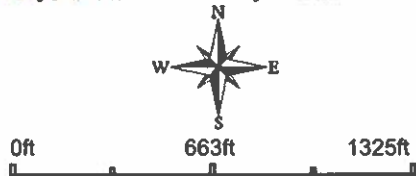
Wetlands Map



State: **South Dakota**
 Location: **4-128N-51W**
 County: **Roberts**
 Township: **Minnesota**
 Date:

Maps Provided By

 CUSTOMER ONLINE MAPPING
 © AgriData, Inc. 2025 www.AgrDataInc.com



Classification Code	Type	Acres
PEM1C	Freshwater Emergent Wetland	25.87
L2UBH	Lake	13.70
PEM1F	Freshwater Emergent Wetland	2.57
PUBH	Freshwater Pond	2.05
Total Acres		44.19

Data Source: National Wetlands Inventory website. U.S. DoI, Fish and Wildlife Service, Washington, D.C. <http://www.fws.gov/wetlands/>

Field borders provided by Farm Service Agency as of 5/21/2008.

