

Tract Boundary Cropland

Tract 654

Tract Cropland Total: 38.05 acres

2026 Program Year

Phy. County: Day, SD

2023 imagery

S36 T124N R053W

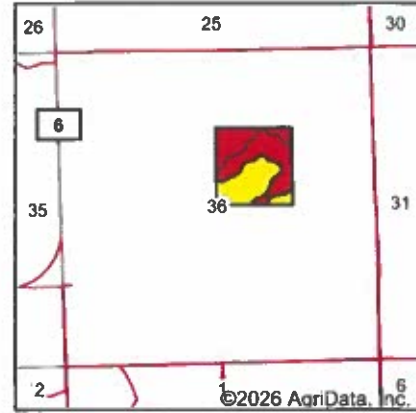
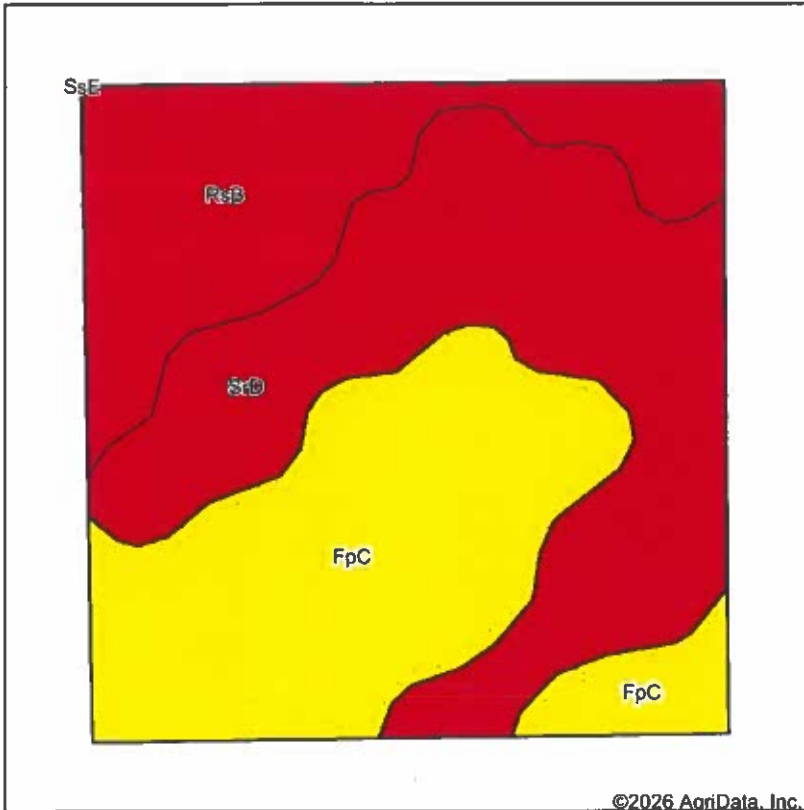
Wetland Determination Identifiers

- Restricted Use
- ▼ Limited Restrictions
- Exempt from Conservation
- Compliance Provisions



United States Department of Agriculture (USDA) Farm Service Agency (FSA) maps are for FSA Program administration only. This map does not represent a legal survey or reflect actual ownership; rather it depicts the information provided directly from the producer and/or National Agricultural Imagery Program (NAIP) imagery. The producer accepts the data 'as is' and assumes all risks associated with its use. USDA-FSA assumes no responsibility for actual or consequential damage incurred as a result of any user's reliance on this data outside FSA Programs. Wetland identifiers do not represent the size, shape, or specific determination of the area. Refer to your original determination (CPA-026 and attached maps) for exact boundaries and determinations or contact USDA Natural Resources Conservation Service (NRCS). USDA is an equal opportunity provider, employer, and lender.

Soils Map



State: **South Dakota**
 County: **Day**
 Location: **36-124N-53W**
 Township: **Kosciusko**
 Acres:
 Date:



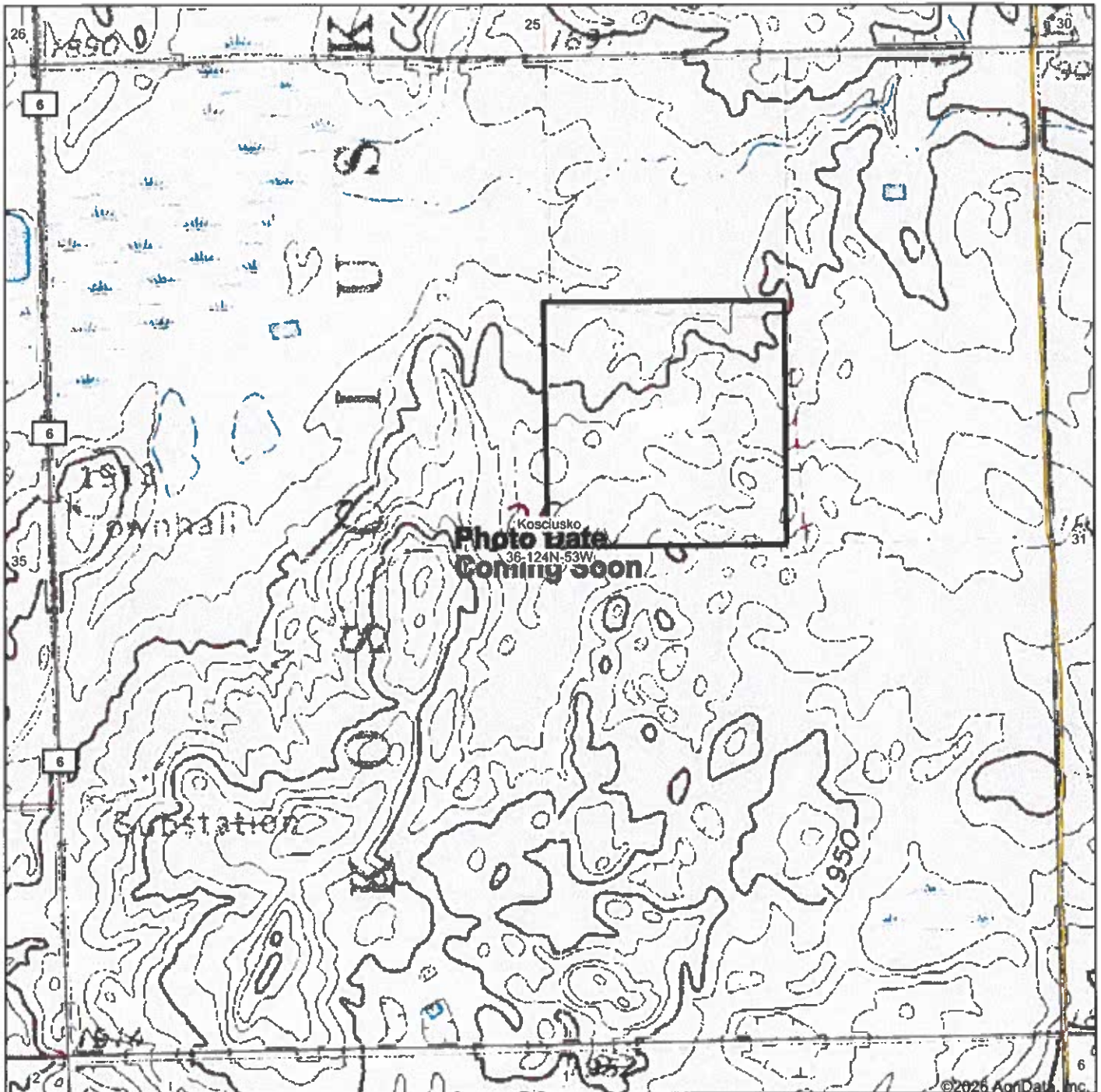
Area Symbol: SD037, Soil Area Version: 31

Code	Soil Description	Acres	Percent of field	PI Legend	Non-Irr Class *c	Productivity Index	*n NCCPI Soybeans
SrD	Sioux-Renshaw complex, coteau, 9 to 15 percent slopes	15.14	39.7%	■	VIs	22	27
FpC	Forman-Buse-Parnell complex, 0 to 9 percent slopes	13.96	36.7%	■	IIIe	66	54
RsB	Renshaw-Sioux complex, coteau, 2 to 6 percent slopes	8.98	23.6%	■	IVs	34	28
Weighted Average					4.43	41	*n 37.1

*n: The aggregation method is "Weighted Average using all components"
 *c: Using Capabilities Class Dominant Condition Aggregation Method

Soils data provided by USDA and NRCS.

Topography Map



©2026 AgriData, Inc.

Map Center: 45° 28' 43.05, -97° 14' 13.69



36-124N-53W
Day County
South Dakota

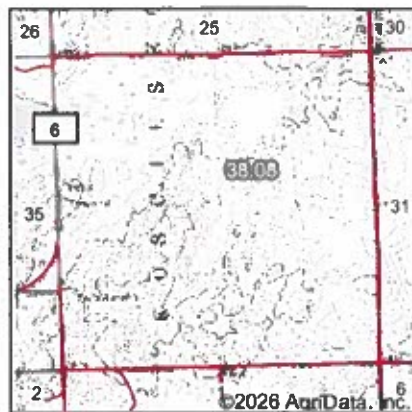
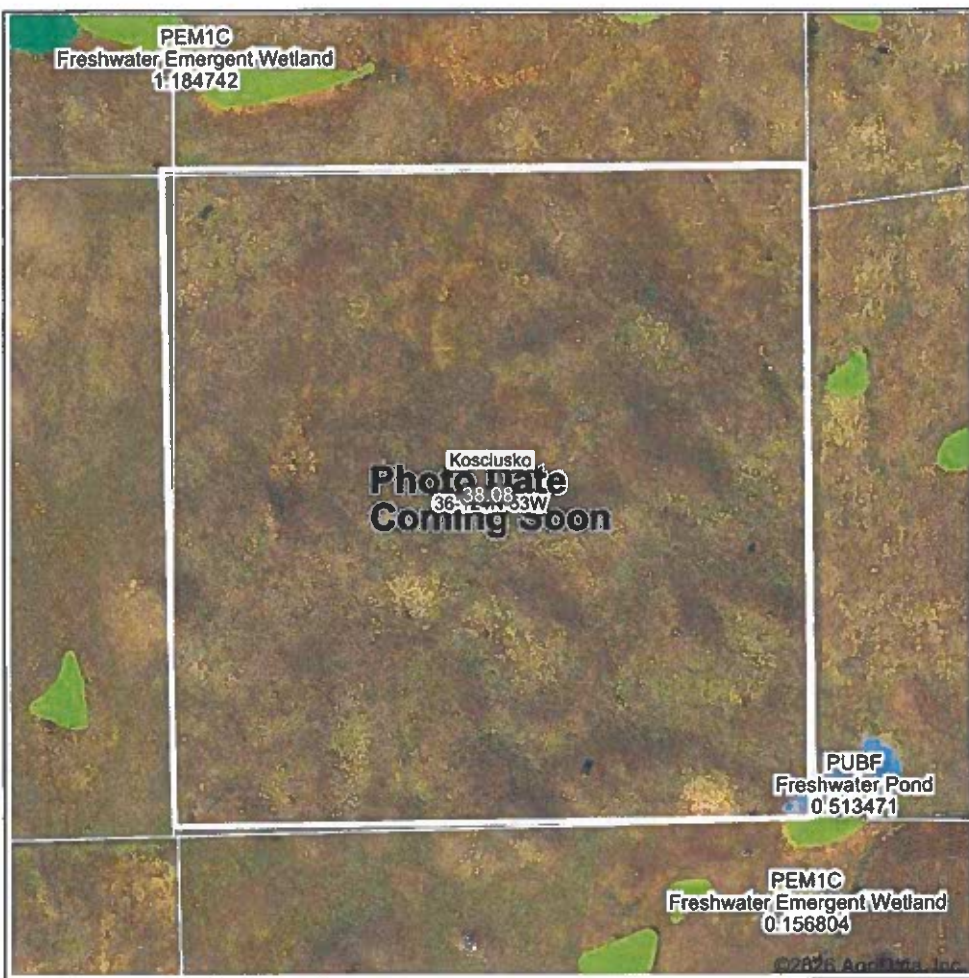


4/13/2026



Field borders provided by Farm Service Agency as of 5/21/2008.

Wetlands Map



State: South Dakota
Location: 36-124N-53W
County: Day
Township:
Date:

Maps Provided By



© AgriData, Inc. 2025 www.AgrDataInc.com



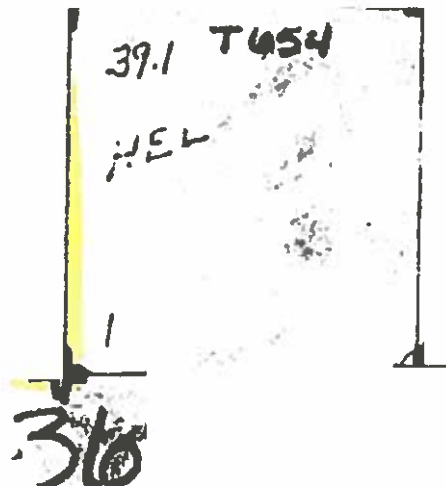
Classification Code	Type	Acres
PUBF	Freshwater Pond	0.05
PEM1C	Freshwater Emergent Wetland	0.00
Total Acres		0.05

Data Source: National Wetlands Inventory website. U.S. DoI, Fish and Wildlife Service, Washington, D.C. <http://www.fws.gov/wetlands/>

Field borders provided by Farm Service Agency as of 5/21/2008.

NOT TO SCALE

124-53



124-53

WETLAND DETERMINATION
highlighted Tracts Only