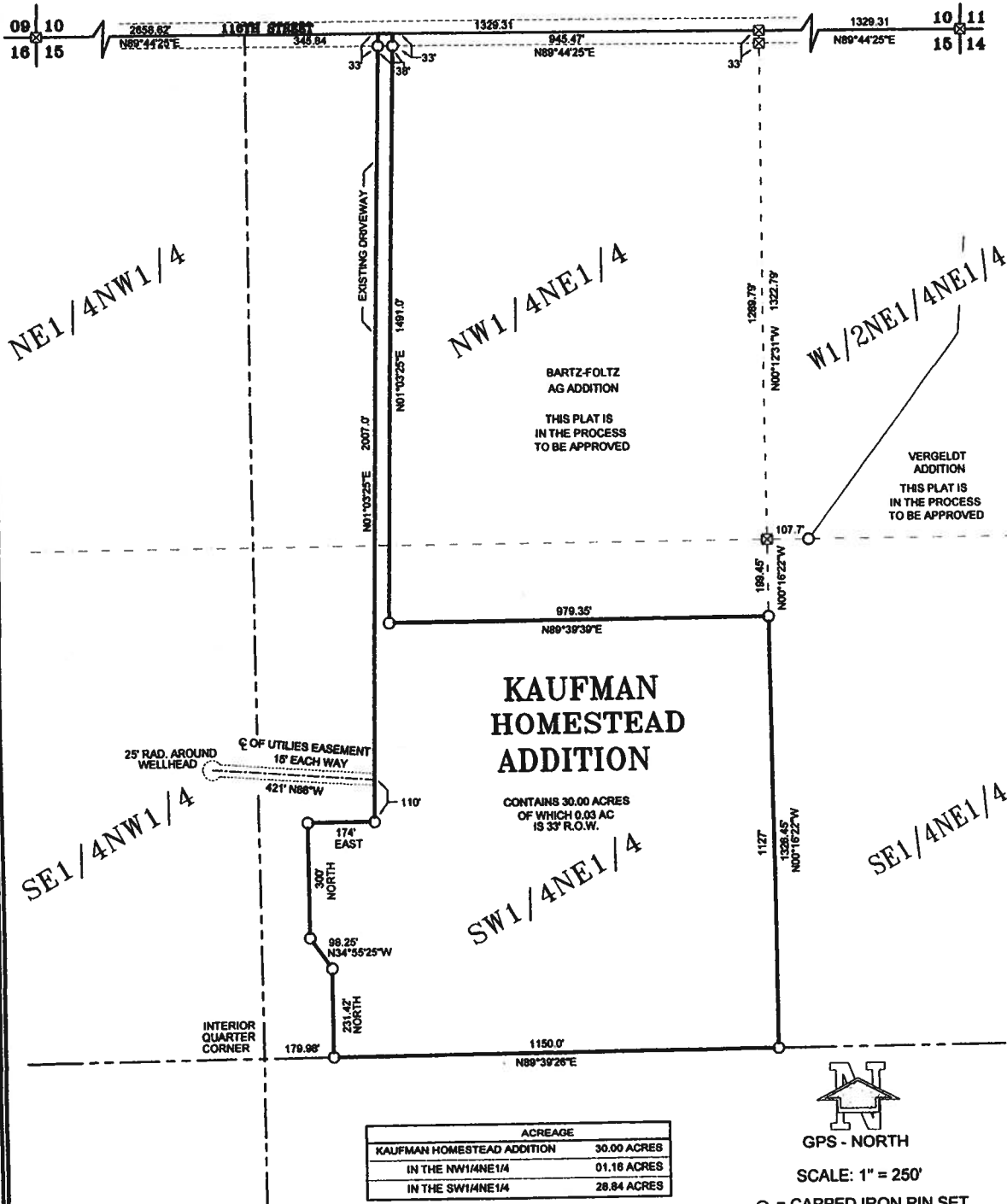


PLAT OF
KAUFMAN HOMESTEAD ADDITION
 LOCATED IN THE W1/2NE1/4 AND THE SE1/4NW1/4 OF
 SECTION 15, T126N, R49W OF THE 5TH P.M.,
 ROBERTS COUNTY, SOUTH DAKOTA



BARTZ-FOLTZ
 AG ADDITION
 THIS PLAT IS
 IN THE PROCESS
 TO BE APPROVED

VERGELDT
 ADDITION
 THIS PLAT IS
 IN THE PROCESS
 TO BE APPROVED

**KAUFMAN
 HOMESTEAD
 ADDITION**

CONTAINS 30.00 ACRES
 OF WHICH 0.03 AC
 IS 33' R.O.W.

ACREAGE	
KAUFMAN HOMESTEAD ADDITION	30.00 ACRES
IN THE NW1/4NE1/4	01.18 ACRES
IN THE SW1/4NE1/4	28.84 ACRES



GPS - NORTH
 SCALE: 1" = 250'

○ = CAPPED IRON PIN SET
 ⊠ = RECOVERED MONUMENT

PAGE 1

HOLTON ENGINEERING INC.