

Aerial Map



Map Center: 45° 52' 14.46, -96° 45' 40.67



14-128N-49W
Roberts County
South Dakota



Maps Provided By



© AgriData, Inc 2021 www.AgrDataInc.com

Field borders provided by Farm Service Agency as of 5/21/2008.

Tract

LAND AREA:

Cropland:	52.9	Acres
Pasture/NC:	132.1	Acres
Road and waste:	7	Acres
Total:	192.0	Acres

IMPROVEMENTS: There are no improvements on this Tract.

Victor Twp:
S1/2SW1/4 EXC
14-128-49

NW1/4SE1/4 EXC RR
14-128-49

S1/2SE1/4 EXC
14-128-49

SOILS INFORMATION:

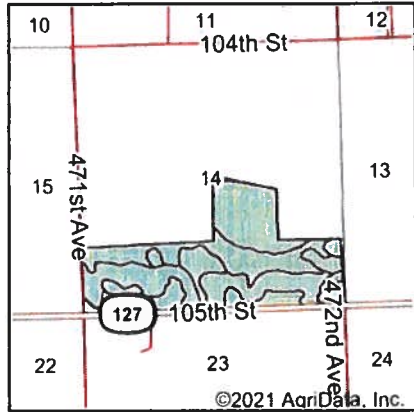
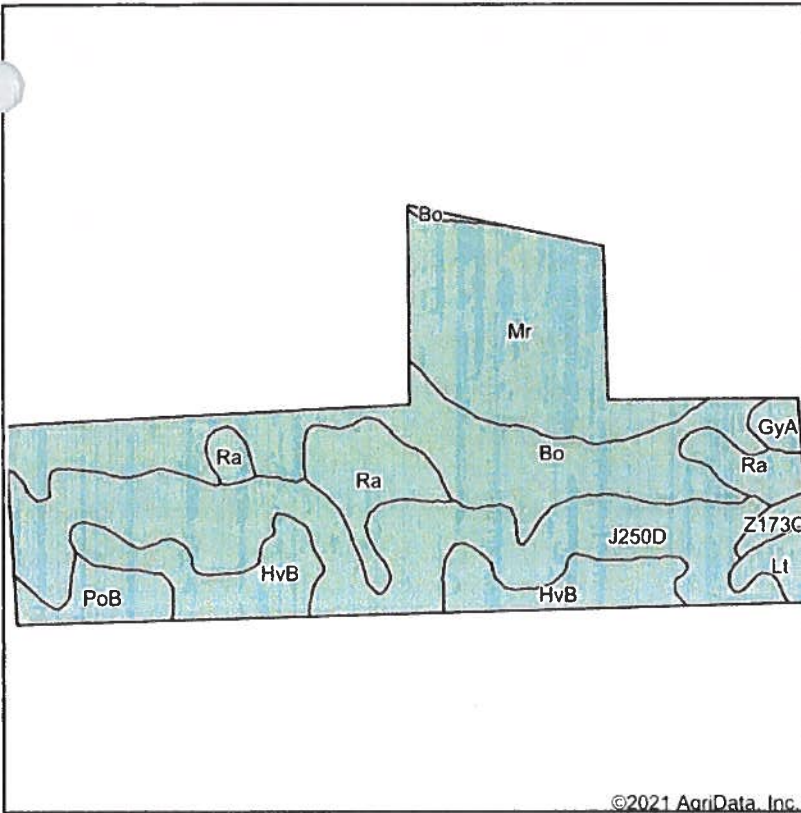
LAND CLASS:	SYM:	DESC:	Soil Rating	% SLOPE:	AC.
IIw	Bo	Borup silt loam	.653	0 - 1	52
IIe	GyA	Glyndon silt loam	.844	0 - 3	2
IIe	HvB	Heimdal-Svea loams	.827	2 - 6	21
IIe	PoB	Poinsett silt loam	.848	2 - 6	6
IVs	RhB	Renshaw-Sioux loams	.276	3 - 9	2
Vw	Ra	Rauville mucky silt loam	.265	0 - 1	14
VIe	FuD	Forman-Buse loams	.368	9 - 15	55
VIw	Lt	Lamoure silty clay loam	.316	0 - 1	1
VIIIw	Mr	Southam silty clay loam	.120	0 - 1	41

Class 2: 80 Ac (42%), Class 4: 2 Ac (1%), Class 5: 14 Ac (7%),
Class 6: 56 Ac (29%), Class 8: 41 Ac (21%)

The main soil types on this tract are Class 6 Forman-Buse loams. These are average producing soils on 9% to 15% slopes. There are smaller amounts of Class 2 Borup silt loam, Glyndon silt loam, Heimdal-Svea loams, Poinsett silt loam, Class 4 Renshaw-Sioux loams, Class 5 Rauville mucky silt loam, Class 6 Forman-Buse loams, Lamoure silty clay loam and Class 8 Southam silty clay loam.

Due to computer rounding some numbers may vary slightly.

Soils Map



State: **South Dakota**
 County: **Roberts**
 Location: **14-128N-49W**
 Township: **Victor**
 Acres:
 Date: **9/1/2021**



Soils data provided by USDA and NRCS.

©2021 AgriData, Inc.

Area Symbol: SD109, Soil Area Version: 21

Code	Soil Description	Acres	Percent of field	Non-Irr Class *c	Productivity Index	Corn	Soybeans	*n NCCPI Soybeans
J250D	Forman-Buse complex, 12 to 20 percent slopes, moderately eroded	56.44	29.0%	IVe	52			54
Bo	Borup silt loam	43.36	22.3%	IVw	57	54	17	42
Mr	Southam silty clay loam, 0 to 1 percent slopes	39.35	20.2%	VIIIw	10			9
HvB	Heimdal-Svea loams, 2 to 6 percent slopes	22.96	11.8%	IIe	83	82	31	54
Ra	Rauville silty clay loam, 0 to 2 percent slopes, frequently flooded	17.75	9.1%	Vw	27			19
PoB	Poinsett-Waubay silty clay loams, 1 to 6 percent slopes	6.82	3.5%	IIe	89			73
Lt	Lamoure silty clay loam, 0 to 2 percent slopes, frequently flooded	3.71	1.9%	VIw	24			45
GyA	Glyndon silt loam, 0 to 3 percent slopes	2.29	1.2%	IIs	76	80	26	50
Z173C	Renshaw-Sioux complex, coteau, 6 to 9 percent slopes	2.02	1.0%	IVe	28			28
Weighted Average					46.8	22.6	7.7	*n 39.2

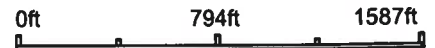
*n: The aggregation method is "Weighted Average using all components"
 *c: Using Capabilities Class Dominant Condition Aggregation Method

Soils data provided by USDA and NRCS.

Topography Contours



Source: USGS 3 meter dem
 Interval(ft): 4.0
 Min: 1,028.6
 Max: 1,094.9
 Range: 66.3
 Average: 1,053.8
 Standard Deviation: 21.85 ft



9/1/2021

14-128N-49W
Roberts County
South Dakota

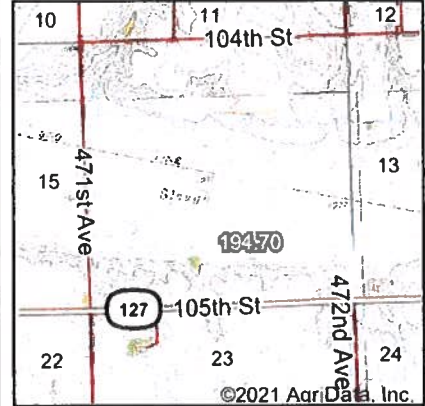
Map Center: 45° 52' 14.46, -96° 45' 40.67

Maps Provided By

 CUSTOMIZED ONLINE MAPPING
 © AgriData Inc. 2021 www.AgrDataInc.com

Field borders provided by Farm Service Agency as of 5/21/2008.

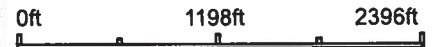
Wetlands Map



State: **South Dakota**
 Location: **14-128N-49W**
 County: **Roberts**
 Township: **Victor**
 Date: **9/1/2021**

Maps Provided By

 CUSTOMIZED ONLINE MAPPING
 © AgriData, Inc. 2021 www.AgriDataInc.com



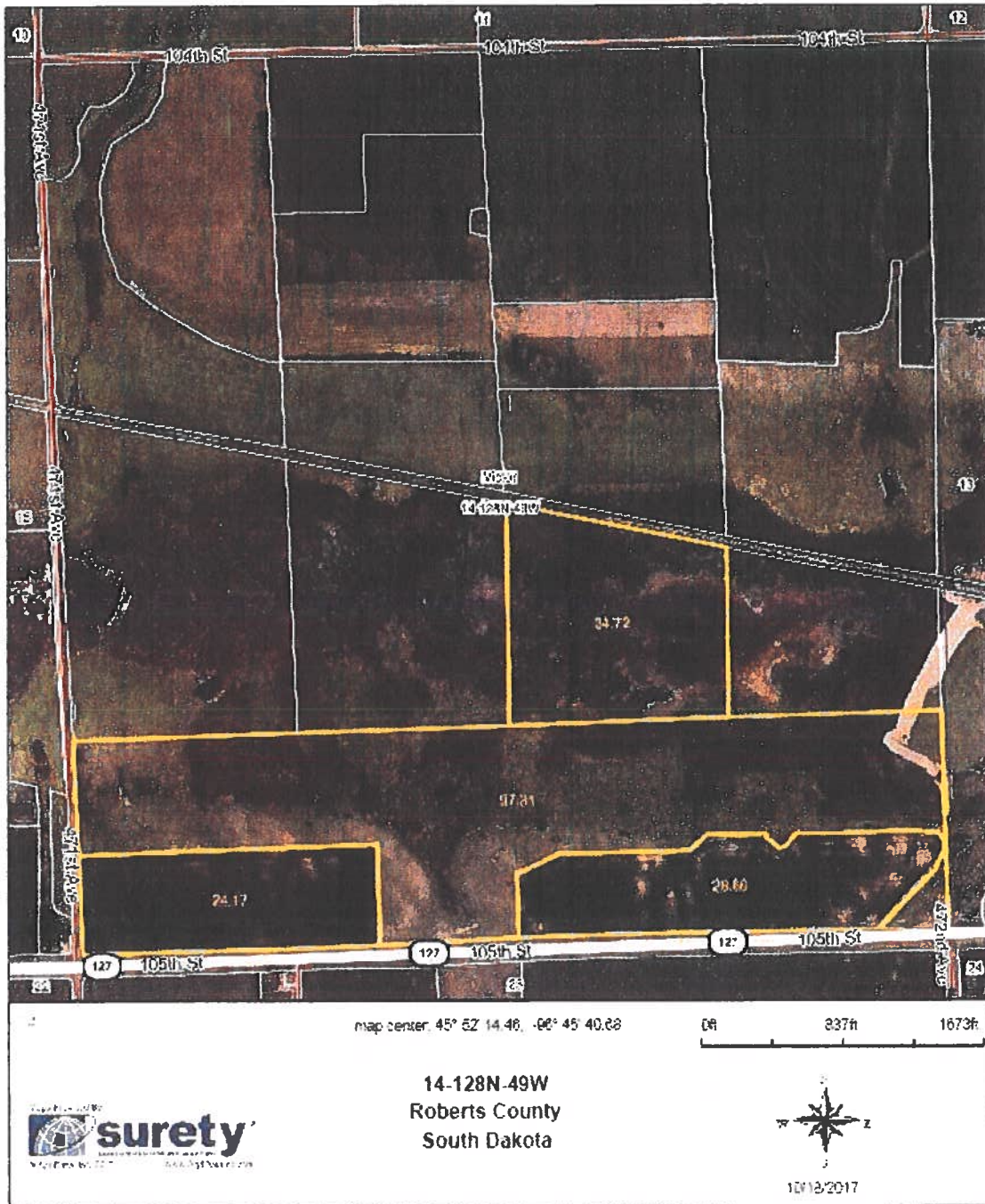
Classification Code	Type	Acres
PEM1/ABF	Freshwater Emergent Wetland	45.00
PEM1A	Freshwater Emergent Wetland	35.05
PSSA	Freshwater Forested/Shrub Wetland	4.62
PEM1C	Freshwater Emergent Wetland	0.56
Total Acres		85.23

Data Source: National Wetlands Inventory website. U.S. DoI, Fish and Wildlife Service, Washington, D.C. <http://www.fws.gov/wetlands/>

Field borders provided by Farm Service Agency as of 5/21/2008.

LAND USE MAP

Aerial Map



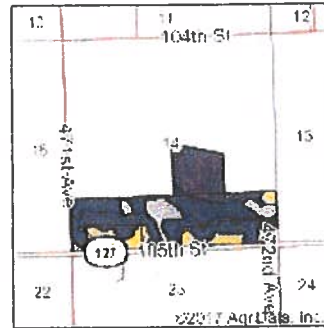
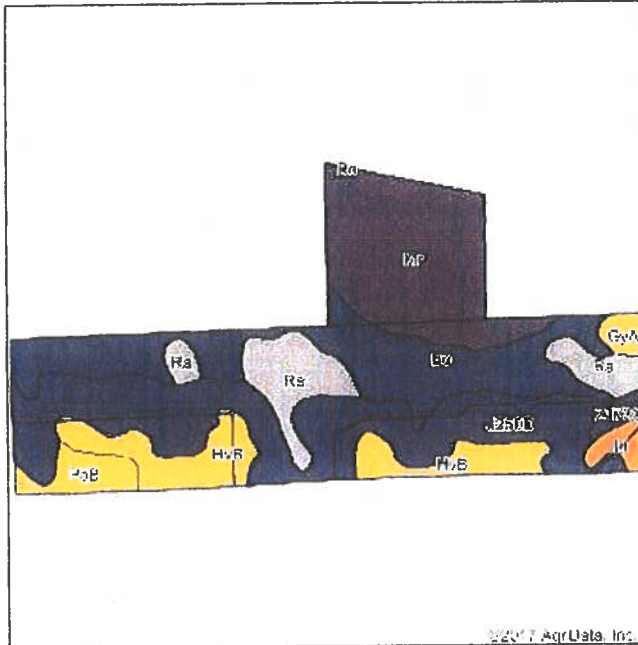
14-128N-49W
Roberts County
South Dakota



10/18/2017

Map borders provided by Farris Services Agency and ESRI

Soils Map



State: South Dakota
 County: Roberts
 Location: 14-128N-49W
 Township: Victor
 Acres: 184.86
 Date: 10/18/2017

W2017 AgrData, Inc.



Soils data provided by USDA and NRCS

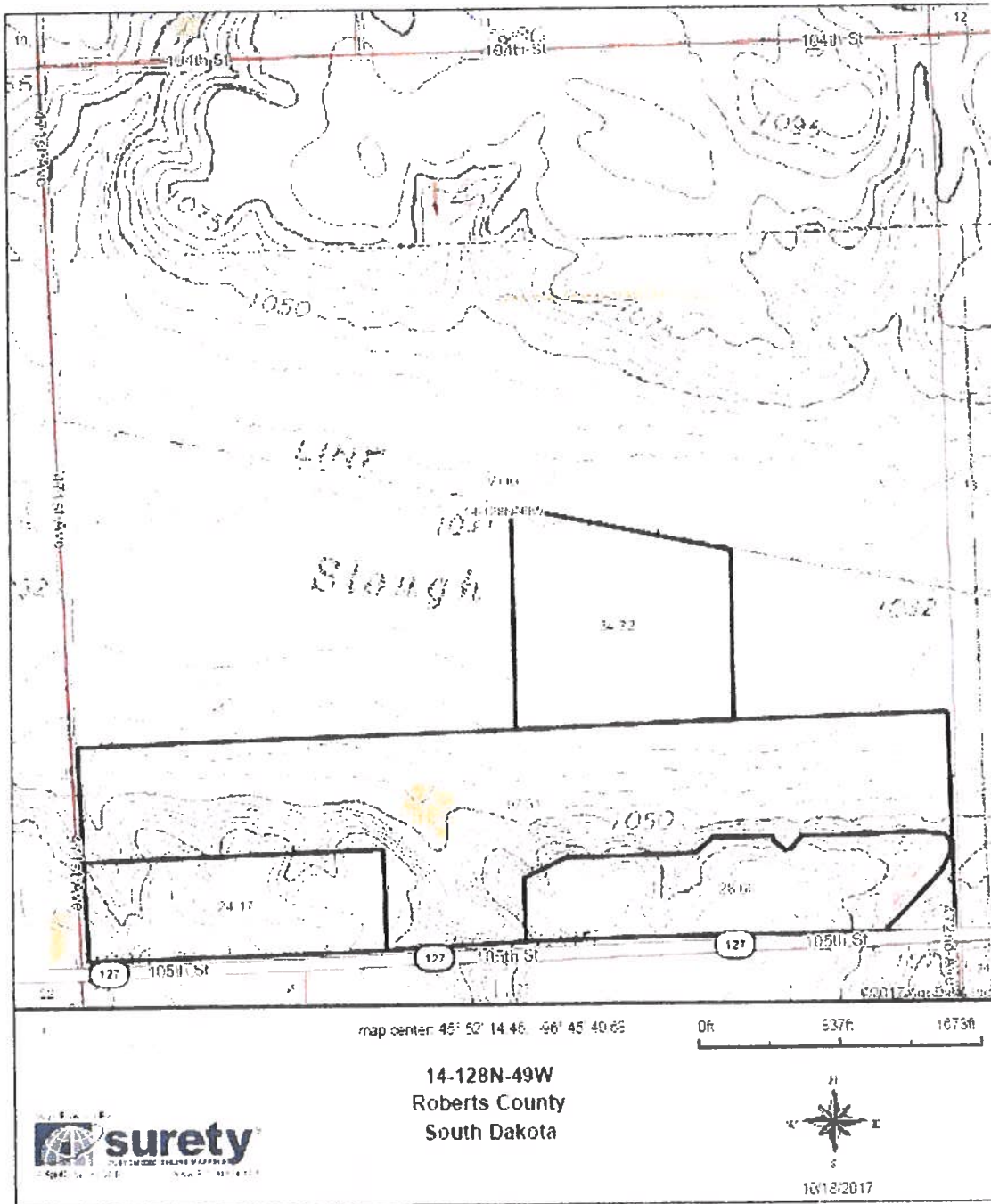
Area Symbol: SD100, Soil Area Version: 17

Code	Soil Description	Acres	Percent of Field	Non-IR Class Legend	Non-IR Class %c	Productivity Index	CoM
J2SGD	Forman-Buse complex, 12 to 20 percent slopes, moderately eroded	54.15	29.3%		IVe	52	
Bo	Bonup silt loam	40.53	21.9%		IVa	57	54
Mr	Ecotnam silt clay loam, 0 to 1 percent slopes	38.62	20.9%		VIIn	10	
HVE	Hezoda-Bvea loams, 2 to 6 percent slopes	20.24	10.9%		IIe	83	92
Ra	Rauvie mucky silt loam	17.78	9.6%		Va	27	25
PoB	Foinsett-Wasboy silt clay loams, 1 to 5 percent slopes	5.95	3.2%		IIe	88	
Lt	Lamoure silt clay loam, channelled	3.32	1.8%		Va	35	35
GyA	Glyson silt loam, 0 to 3 percent slopes	2.38	1.3%		III	76	80
Z179C	Renshaw-Stoua complex, 6 to 9 percent slopes	1.99	1.1%		IVe	27	
Weighted Average						49.2	24.8

Using Capabilities Class Dominant Condition Aggregation Method

Soils data provided by USDA and NRCS

Topography Map

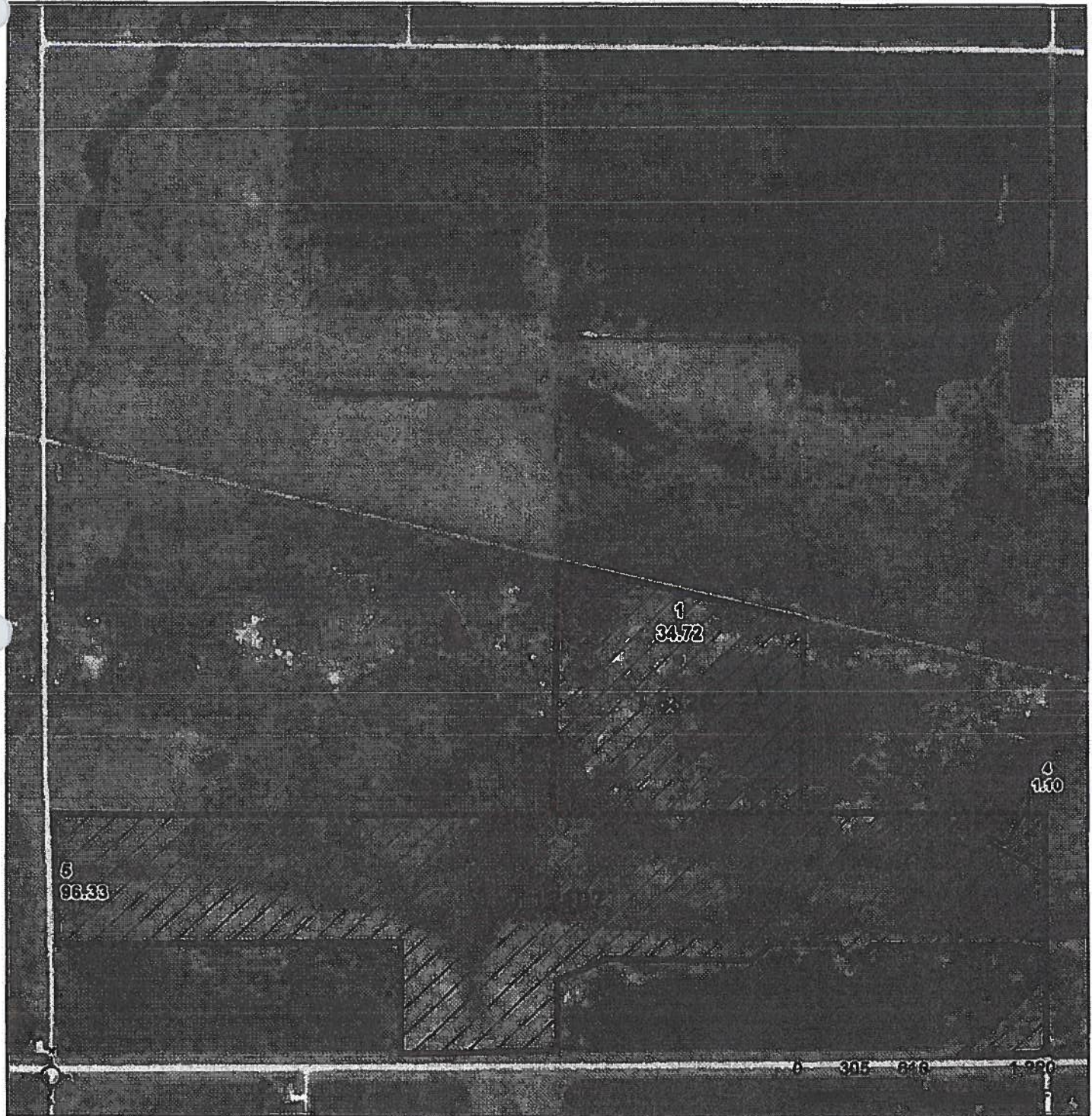


Parcel boundaries provided by Public Service Agency on 10/18/2017



United States
Department of
Agriculture

Roberts County, South Dakota



Common Land Unit PLSS

- Non-Cropland
- Tract Boundary

Wetland Determination

- Restricted Use
- Limited Restrictions
- Exempt from Conservation Compliance Provisions

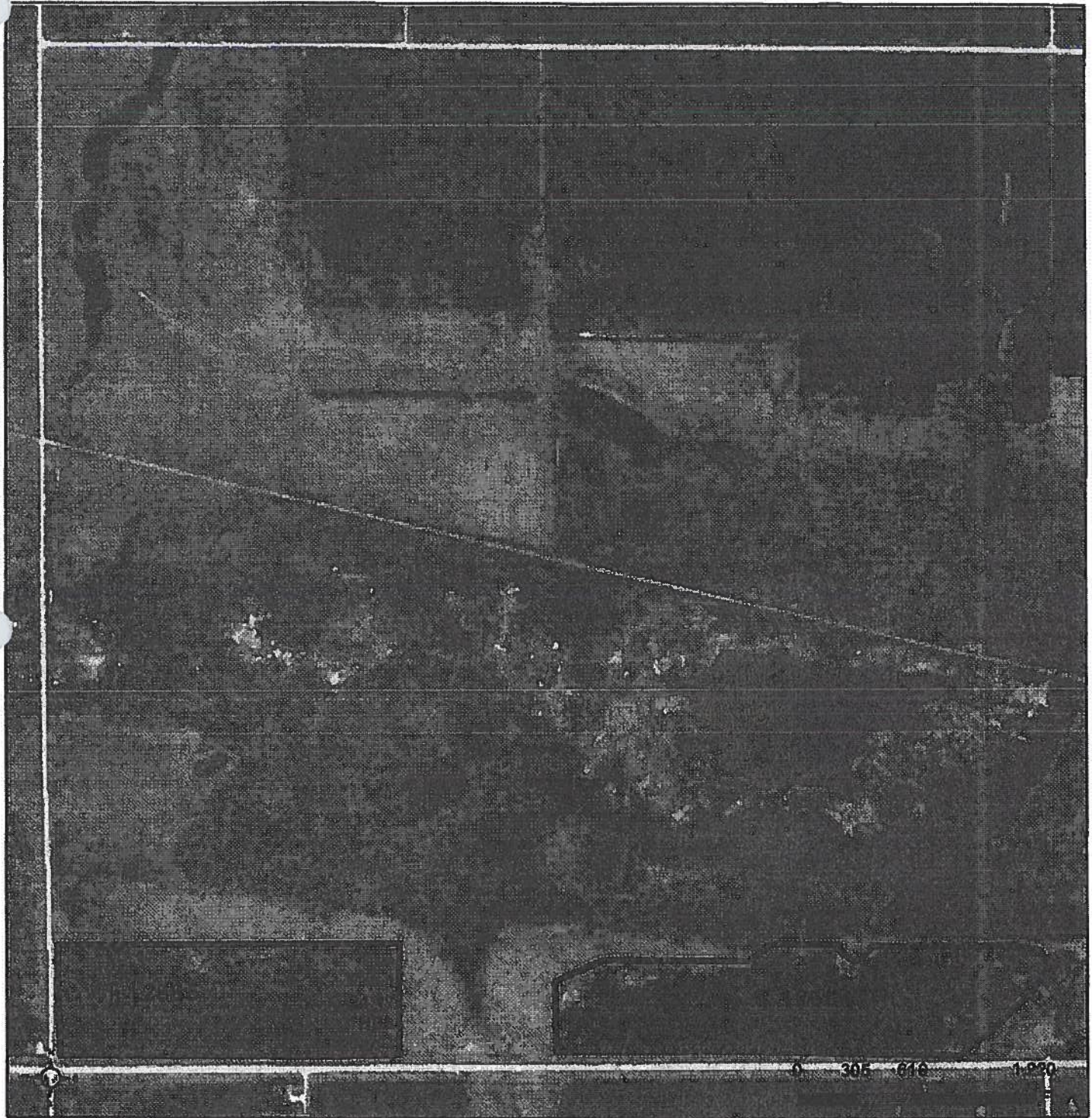
2021 Program Year

Map Created April 05, 2021

Farm 10218





14-128N-49LW

United States Department of Agriculture (USDA) Farm Service Agency (FSA) maps are for FSA Program administration only. This map does not represent a legal survey or reflect actual ownership; rather it depicts the information provided directly from the producer and/or National Agricultural Imagery Program (NAIP) imagery. The producer accepts the data 'as is' and assumes all risks associated with its use. USDA-FSA assumes no responsibility for actual or consequential damage incurred as a result of any user's reliance on this data outside FSA Programs. Wetland identifiers do not represent the size, shape, or specific determination of the area. Refer to your original determination (CPA-026 and attached maps) for exact boundaries and determinations or contact USDA Natural Resources Conservation Service (NRCS).



Common Land Unit PLSS

-  Cropland
-  Tract Boundary

- Wetland Determination**
-  Restricted Use
 -  Limited Restrictions
 -  Exempt from Conservation
 -  Compliance Provisions

2021 Program Year

Map Created April 05, 2021

Farm 9024

14-128N-49LW

United States Department of Agriculture (USDA) Farm Service Agency (FSA) maps are for FSA Program administration only. This map does not represent a legal survey or reflect actual ownership, rather it depicts the information provided directly from the producer and/or National Agricultural Imagery Program (NAIP) Imagery. The producer accepts the data 'as is' and assumes all risks associated with its use. USDA-FSA assumes no responsibility for actual or consequential damage incurred as a result of any user's reliance on this data outside FSA Programs. Wetland identifiers do not represent the size, shape, or specific determination of the area. Refer to your original determination (CPA-028 and attached maps) for exact boundaries and determinations or contact USDA Natural Resources Conservation Service (NRCS).

14-128-49

T 10218

T 5320

T 12107

T 9024

T 12664

T 12665

