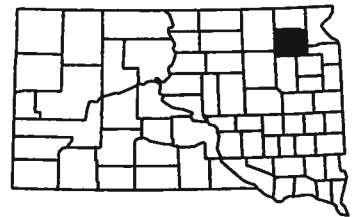


# Day County, SD

# County Seat Webster, SD

	R-59-W	R-58-W	R-57-W	R-56-W	R-55-W	R-54-W	R-53-W
T-124-N	Farmington Pages 30-31	Homer Pages 36-37	Independence Pages 38-39	Liberty Pages 44-45	Nutley Pages 50-51	Kosciusko Pages 42-43	
T-123-N	Andover 'N' Pages 18-19	Union Pages 64-65	Lynn Pages 46-47	Raritan Pages 56-57	Grenville Pages 32-33		
T-122-N	Andover 'S' Pages 20-21	Bristol Pages 22-23	Kidder Pages 40-41	Webster Pages 70-71	Racine Pages 54-55	Waubay Pages 68-69	
T-121-N	Scotland Pages 60-61	Valley Pages 66-67	Butler Pages 24-25	Rusk Pages 58-59	<b>Morton Pages 48-49</b>	Central Point Pages 26-27	
T-120-N	Oak Gulch Pages 52-53	Troy Pages 62-63	York Pages 74-75	Highland Pages 34-35	Wheatland Pages 72-73	Egeland Pages 28-29	



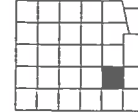
The Plat & Directory  
Maps Of This  
Publication Are  
Updated YEARLY.



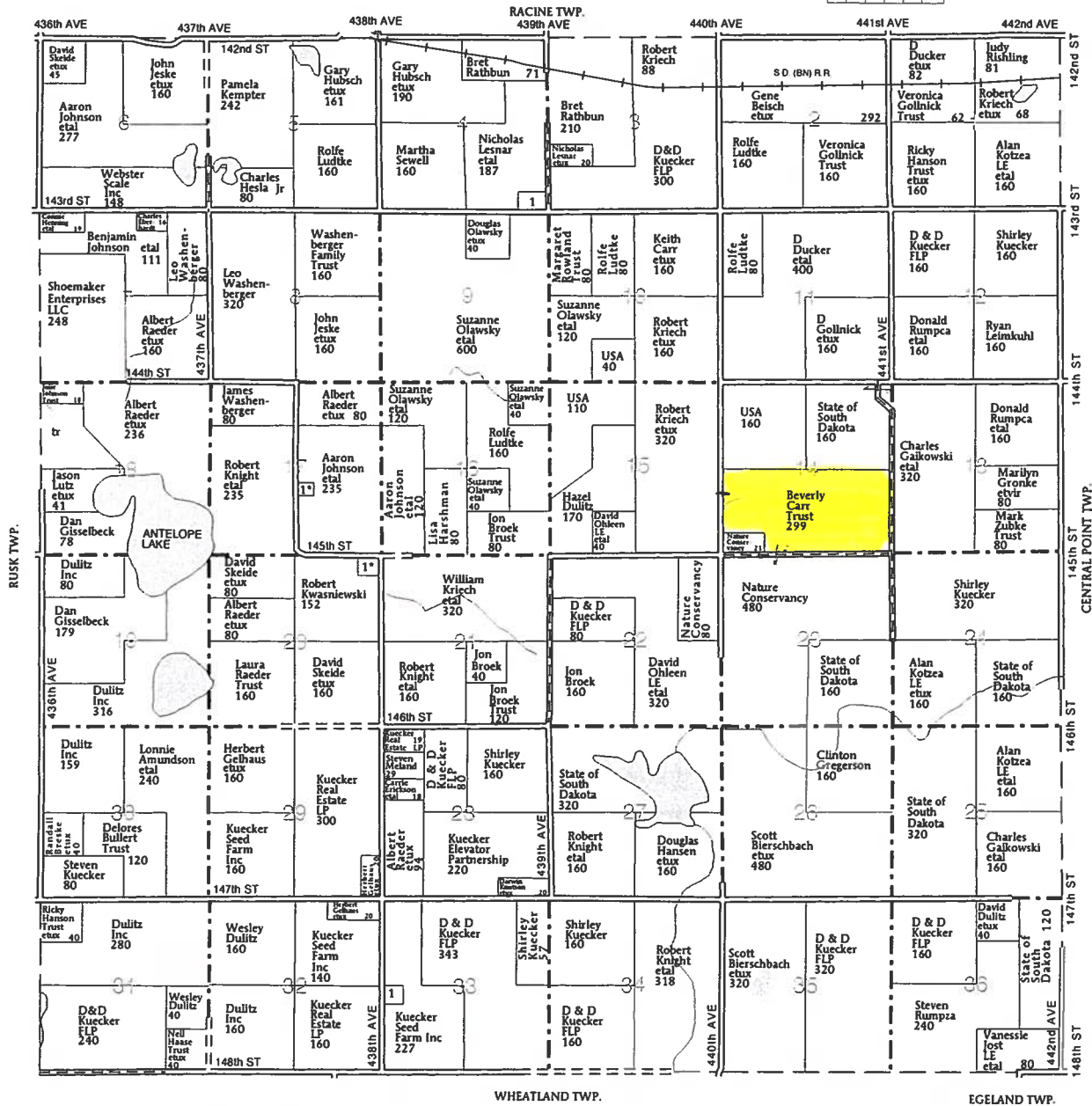
Please turn to the  
**DISTRICT MANAGER** Page in this  
 book to see how you can receive  
 your **FREE DIGITAL FLIP BOOKS**

T-121-N

**MORTON PLAT**  
 (Landowners)



R-55-W



**MORTON TOWNSHIP**

**SECTION 4**

1. Russow, Bernadette 13

**SECTION 17**

1. Wagner, Larry etux 5

**SECTION 20**

1. Kwasniewski, Jeffrey etal 8

**SECTION 33**

1. Kuecker, Amy 13