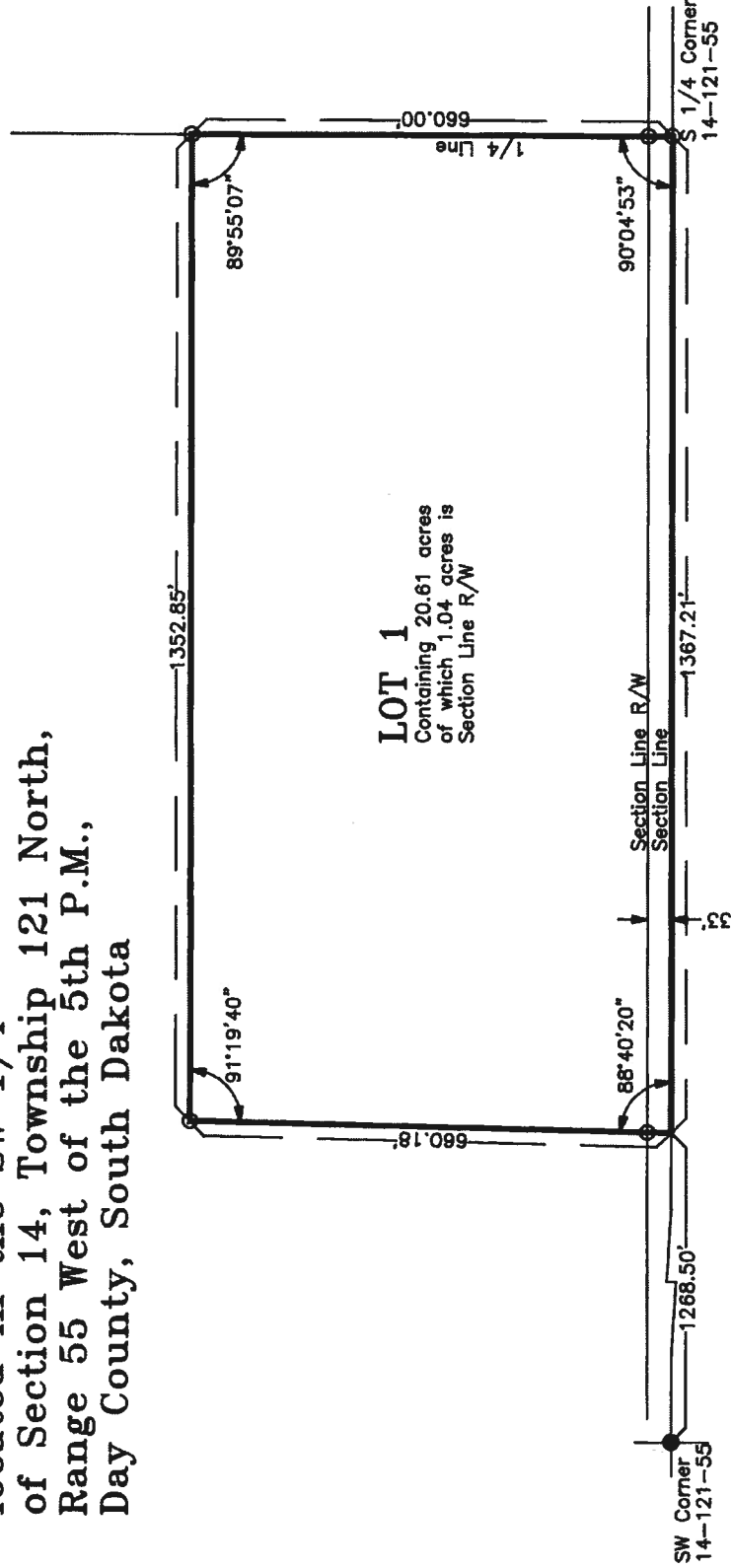


**PLAT OF**

**LOT 1, PUCKETT'S SUBDIVISION,**  
located in the SW 1/4  
of Section 14, Township 121 North,  
Range 55 West of the 5th P.M.,  
Day County, South Dakota



**LOT 1**  
Containing 20.61 acres  
of which 1.04 acres is  
Section Line R/W

SCALE: 1"=200'

Pin Set ○  
Pin Found ●



Surveyed and Platted by

Donald R. Larson  
Registered Professional Engineer  
and Land Surveyor No. 2499

September 2002

Document Prepared by  
Donald R. Larson  
LARSON ENGINEERING  
102 S. Dakota St.  
Milbank, SD 57252  
805-432-4089