

**Common Land Unit**

- Non-Cropland
- Cropland

- CRP
- Tract Boundary
- PLSS

**Wetland Determination Identifiers**

- Restricted Use
- Limited Restrictions
- Exempt from Conservation Compliance Provisions

Unless otherwise noted, crops listed below are:  
 Non-irrigated Intended for Grain  
 Corn = Yellow  
 Soybeans = Common  
 Wheat - HRS or HRW  
 Sunflowers = Oil or Non-oil

Producer Initial \_\_\_\_\_  
 Date \_\_\_\_\_

2021 Program Year

Map Created September 22, 2021

Farm 4879

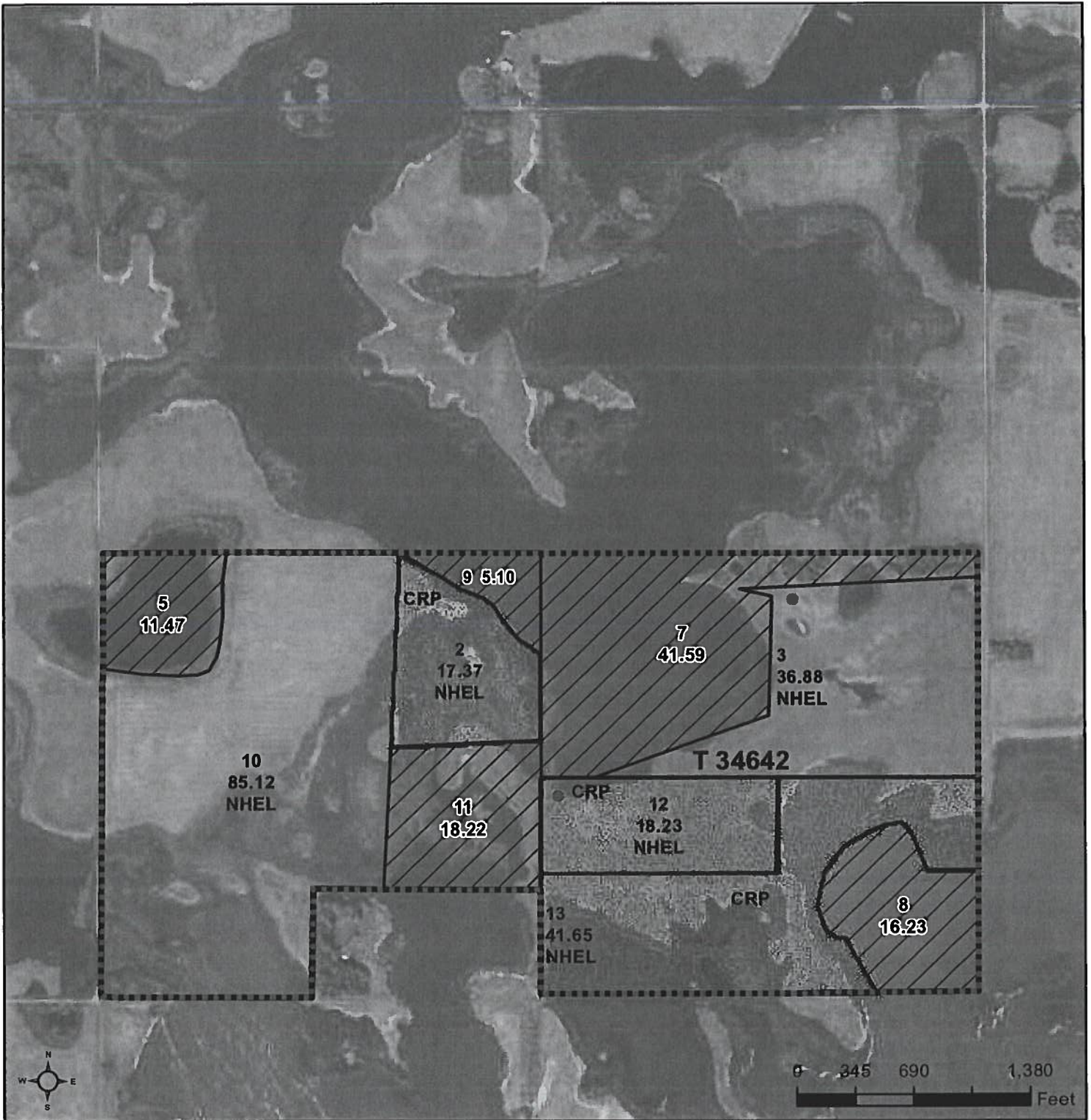
14 -121N -55W

United States Department of Agriculture (USDA) Farm Service Agency (FSA) maps are for FSA Program administration only. This map does not represent a legal survey or reflect actual ownership; rather it depicts the information provided directly from the producer and/or National Agricultural Imagery Program (NAIP) imagery. The producer accepts the data 'as is' and assumes all risks associated with its use. USDA-FSA assumes no responsibility for actual or consequential damage incurred as a result of any user's reliance on this data outside FSA Programs. Wetland identifiers do not represent the size, shape, or specific determination of the area. Refer to your original determination (CPA-026 and attached maps) for exact boundaries and determinations or contact USDA Natural Resources Conservation Service (NRCS).



United States  
Department of  
Agriculture

# Day County, South Dakota



**Common Land Unit**

- Non-Cropland
- Cropland
- CRP
- Tract Boundary PLSS

**Wetland Determination Identifiers**

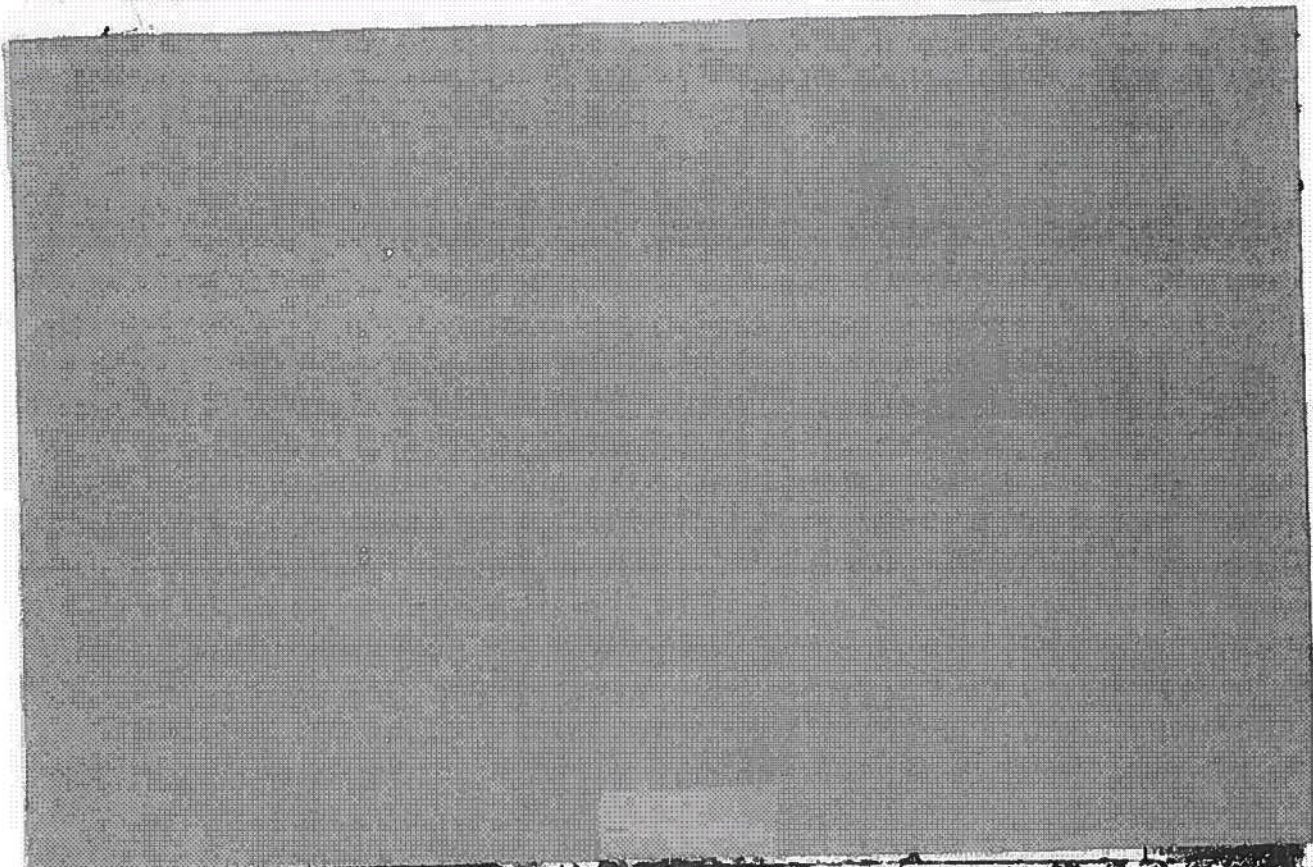
- Restricted Use
- ▽ Limited Restrictions
- Exempt from Conservation
- Compliance Provisions

2021 Program Year  
Map Created March 18, 2021

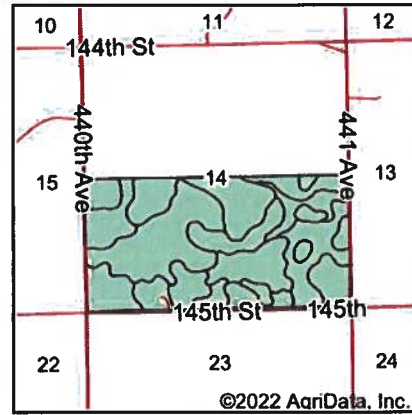
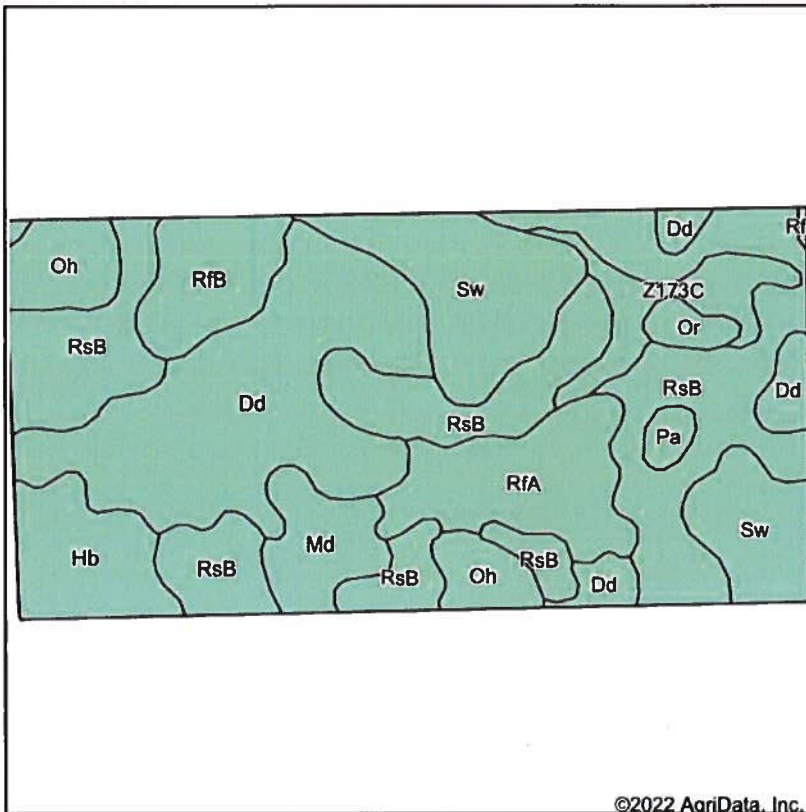
**Farm 4879**

**14-121N-55W-Day**

United States Department of Agriculture (USDA) Farm Service Agency (FSA) maps are for FSA Program administration only. This map does not represent a legal survey or reflect actual ownership; rather it depicts the information provided directly from the producer and/or National Agricultural Imagery Program (NAIP) imagery. The producer accepts the data 'as is' and assumes all risks associated with its use. USDA-FSA assumes no responsibility for actual or consequential damage incurred as a result of any user's reliance on this data outside FSA Programs. Wetland identifiers do not represent the size, shape, or specific determination of the area. Refer to your original determination (CPA-026 and attached maps) for exact boundaries and determinations or contact USDA Natural Resources Conservation Service (NRCS).



# Soils Map



State: **South Dakota**  
 County: **Day**  
 Location: **14-121N-55W**  
 Township: **Morton**  
 Acres: **315.96**  
 Date: **1/14/2022**



Soils data provided by USDA and NRCS.

©2022 AgriData, Inc.

© AgriData, Inc. 2021

www.AgriDataInc.com

Area Symbol: SD037, Soil Area Version: 27

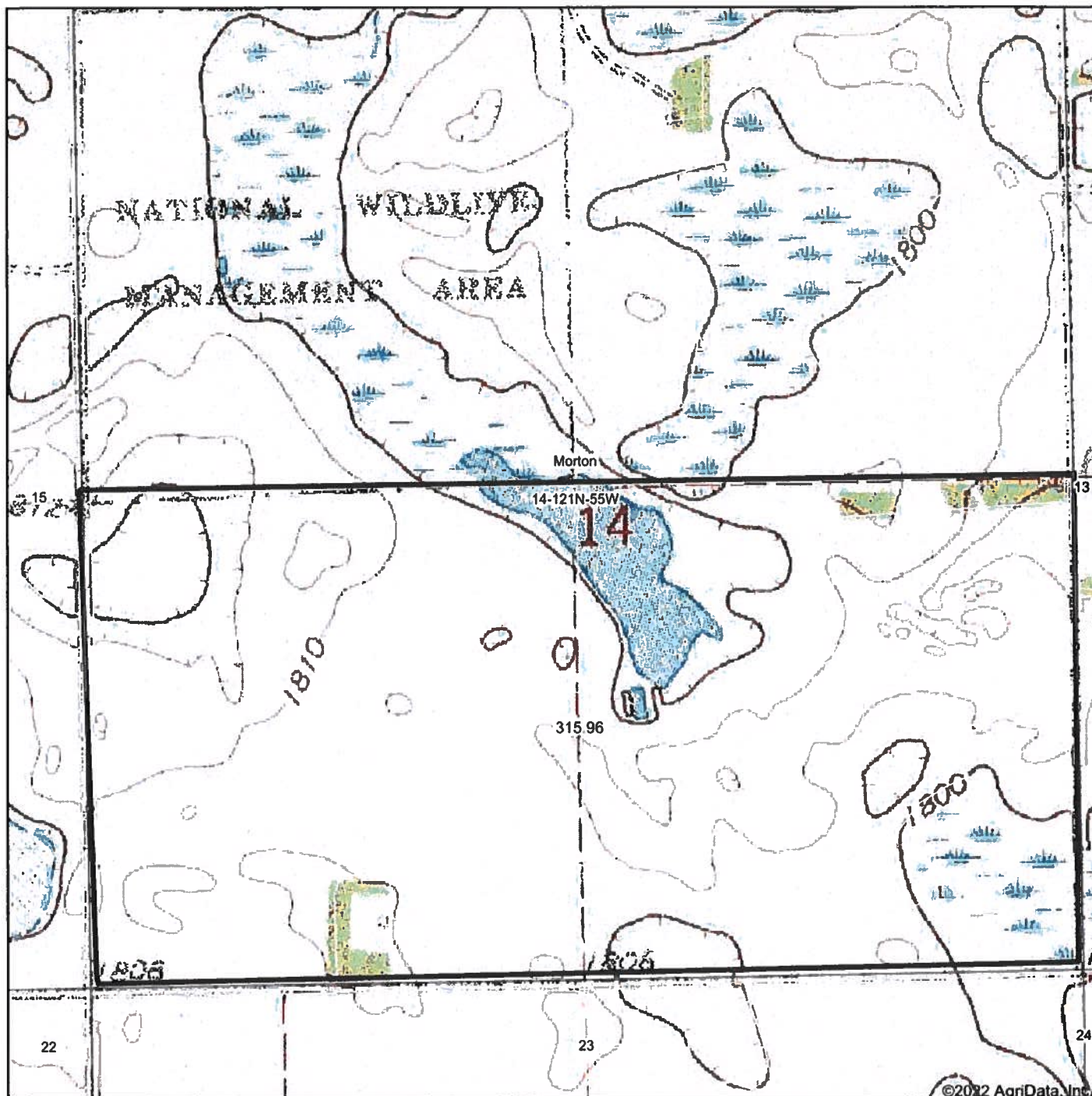
| Code                    | Soil Description                                       | Acres | Percent of field | Non-Irr Class *c | Productivity Index | Corn Bu   | Soybeans Bu | *n NCCPI Soybeans |
|-------------------------|--|-------|------------------|------------------|--------------------|-----------|-------------|-------------------|
| RsB                     | Renshaw-Sioux complex, coteau, 2 to 6 percent slopes   | 99.13 | 31.4%            | IVs              | 34                 |           |             | 30                |
| Dd                      | Divide loam  | 70.82 | 22.4%            | IIIs             | 55                 | 58        | 19          | 38                |
| Sw                      | Southam silty clay loam, 0 to 1 percent slopes         | 40.85 | 12.9%            | VIIIw            | 10                 |           |             | 9                 |
| RfA                     | Renshaw-Fordville loams, coteau, 0 to 2 percent slopes | 25.34 | 8.0%             | IIIs             | 47                 |           |             | 38                |
| Hb                      | Hamerly-Parnell complex                                | 17.64 | 5.6%             | IIs              | 52                 | 48        | 16          | 33                |
| Oh                      | Oldham silty clay loam                                 | 15.81 | 5.0%             | Vw               | 30                 | 25        | 8           | 21                |
| RfB                     | Renshaw-Fordville loams, coteau, 2 to 6 percent slopes | 15.73 | 5.0%             | IVs              | 43                 |           |             | 36                |
| Md                      | Marysland-Divide loams                                 | 12.44 | 3.9%             | IVw              | 51                 | 47        | 15          | 34                |
| Z173C                   | Renshaw-Sioux complex, coteau, 6 to 9 percent slopes   | 12.25 | 3.9%             | IVe              | 28                 |           |             | 28                |
| Or                      | Orthents, gravelly                                     | 3.44  | 1.1%             | VIIIs            | 4                  | 4         | 2           | 5                 |
| Pa                      | Parnell silty clay loam                                | 2.51  | 0.8%             | Vw               | 34                 | 25        | 9           | 8                 |
| <b>Weighted Average</b> |  |       |                  | <b>4.20</b>      | <b>38</b>          | <b>19</b> | <b>6.2</b>  | <b>*n 29.4</b>    |

\*n: The aggregation method is "Weighted Average using all components"

\*c: Using Capabilities Class Dominant Condition Aggregation Method

Soils data provided by USDA and NRCS.

# Topography Map



map center: 45° 17' 21.2, -97° 23' 50.97



**14-121N-55W**  
**Day County**  
**South Dakota**



Maps Provided By  
**surety**  
 CUSTOMIZED ONLINE MAPPING  
 © AgriData, Inc. 2021 www.AgriDataInc.com

Field borders provided by Farm Service Agency as of 5/21/2008.