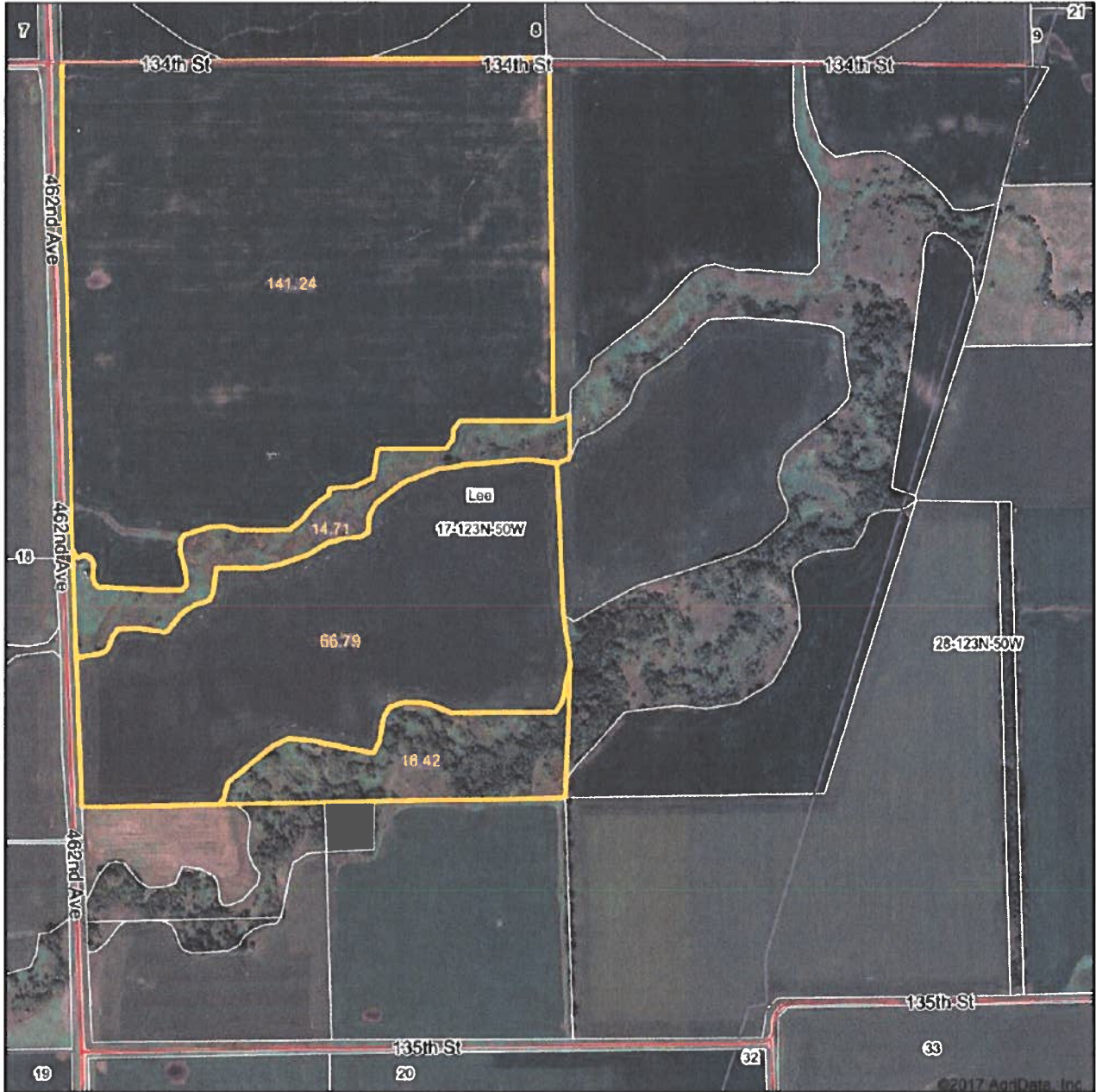


LAND USE MAP

Aerial Map



map center: 45° 26' 4.51, -96° 56' 54.27

0ft 833ft 1667ft

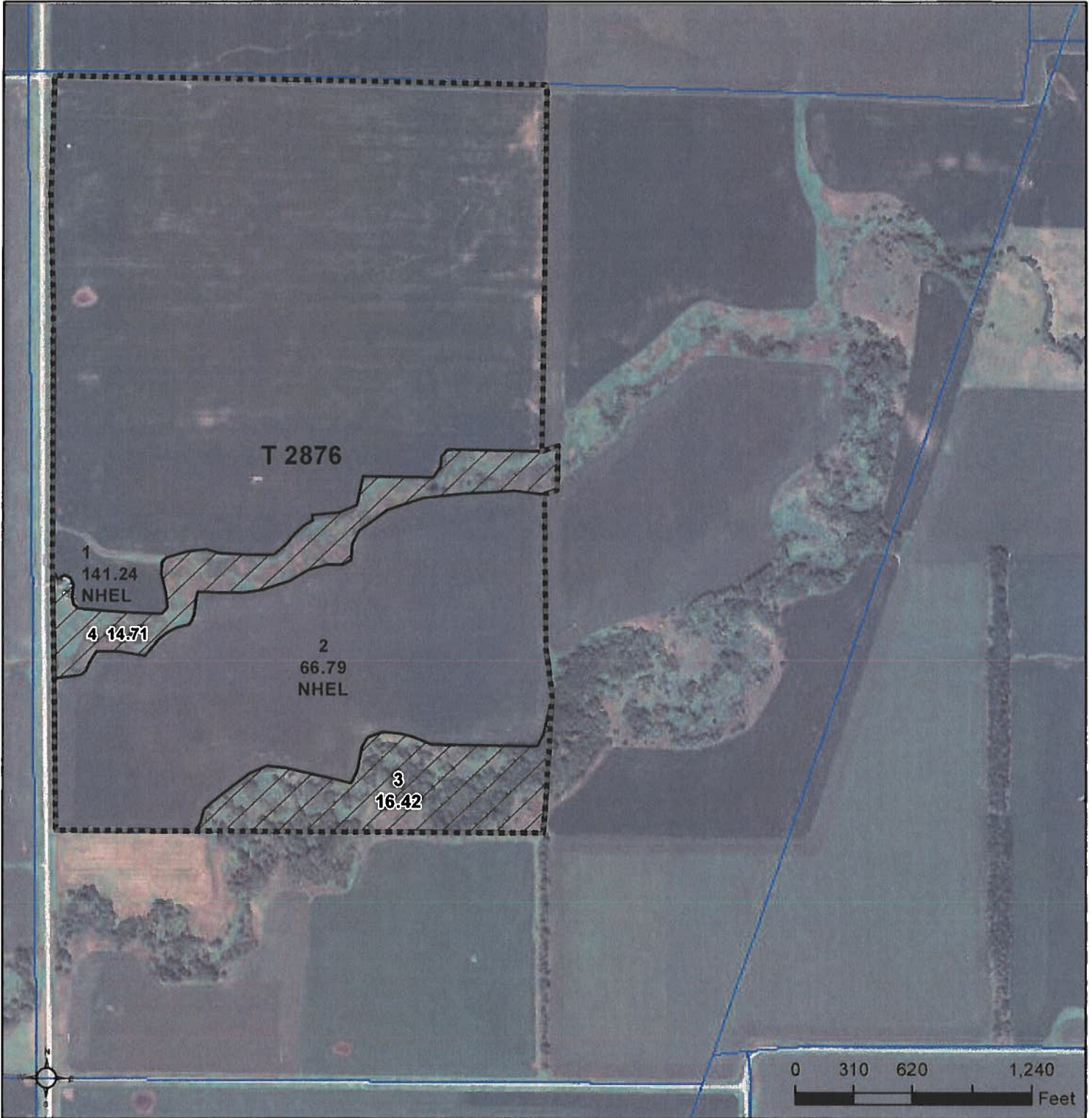
Maps Provided By

CUSTOMER ONLINE MAPPING
© AgriData, Inc. 2017 www.AgriDataInc.com

17-123N-50W
Roberts County
South Dakota



Field borders provided by Farm Service Agency as of 5/21/2008.



Common Land Unit

- Non-Cropland
- Cropland
- Tract Boundary
- PLSS

Wetland Determination Identifiers

- Restricted Use
- Limited Restrictions
- Exempt from Conservation Compliance Provisions

2018 Program Year

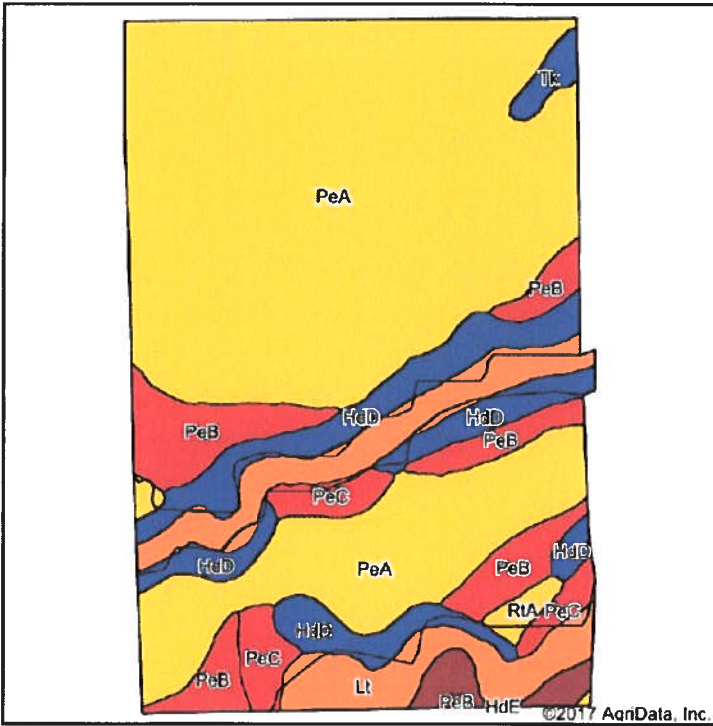
Map Created December 18, 2017

Farm 1345

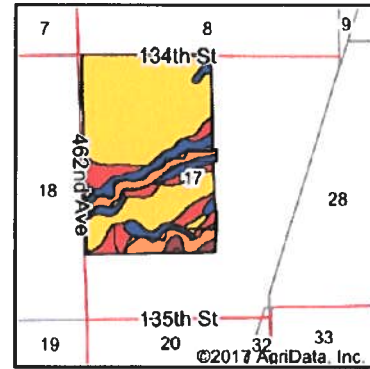
17-123N-50LW

United States Department of Agriculture (USDA) Farm Service Agency (FSA) maps are for FSA Program administration only. This map does not represent a legal survey or reflect actual ownership; rather it depicts the information provided directly from the producer and/or National Agricultural Imagery Program (NAIP) imagery. The producer accepts the data 'as is' and assumes all risks associated with its use. USDA-FSA assumes no responsibility for actual or consequential damage incurred as a result of any user's reliance on this data outside FSA Programs. Wetland identifiers do not represent the size, shape, or specific determination of the area. Refer to your original determination (CPA-026 and attached maps) for exact boundaries and determinations or contact USDA Natural Resources Conservation Service (NRCS).

Soils Map



Soils data provided by USDA and NRCS.



State: **South Dakota**
 County: **Roberts**
 Location: **17-123N-50W**
 Township: **Lee**
 Acres: **239.16**
 Date: **12/8/2017**

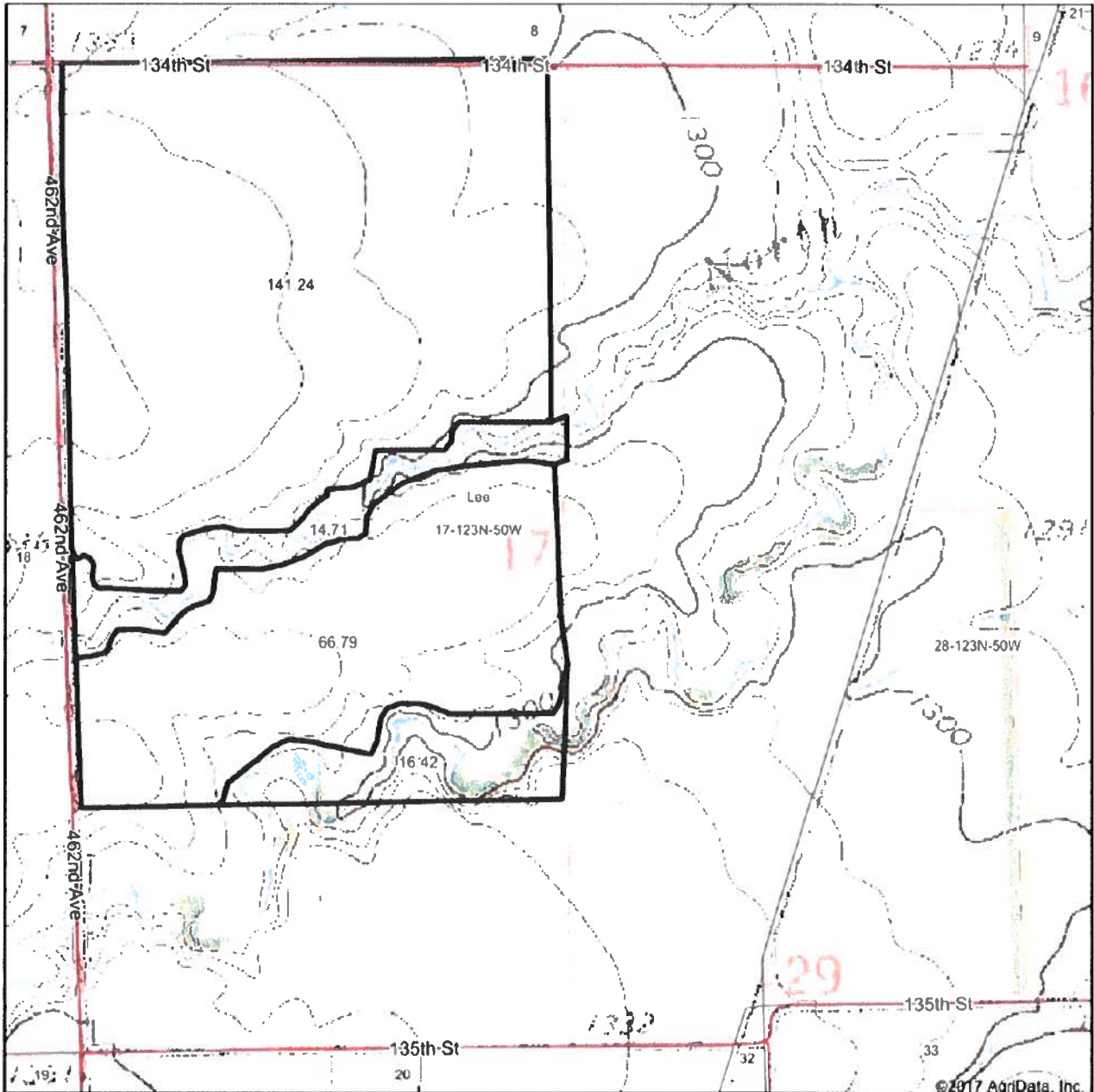


Area Symbol: SD109, Soil Area Version: 18							
Code	Soil Description	Acres	Percent of field	Non-Irr Class Legend	Non-Irr Class *c	Productivity Index	Corn
PeA	Peever clay loam, 0 to 2 percent slopes	149.97	62.7%		IIIs	73	
HdD	Hattie clay loam, 9 to 15 percent slopes	26.49	11.1%		IVe	48	30
Lt	Lamoure silty clay loam, 0 to 2 percent slopes, frequently flooded	23.92	10.0%		VW	24	
PeB	Peever clay loam, 2 to 6 percent slopes	22.75	9.5%		IIIE	68	
PeC	Peever clay loam, 6 to 9 percent slopes	8.55	3.6%		IIIE	56	53
HdE	Hattie clay loam, 15 to 40 percent slopes	3.61	1.5%		VIIIE	27	14
Tk	Tonka silty clay loam, 0 to 1 percent slopes	2.09	0.9%		IVW	58	
RIa	Rentill loam, 0 to 2 percent slopes	1.78	0.7%		IIIs	47	43
Weighted Average						63.2	5.7

*c: Using Capabilities Class Dominant Condition Aggregation Method

Soils data provided by USDA and NRCS

Topography Map



map center: 45° 26' 4.51, -96° 56' 54.27



17-123N-50W
Roberts County
South Dakota



12/8/2017

Maps Provided By
surety
CUSTOMER ONLINE MAPPING
© AgriData, Inc. 2017 www.AgrData.com

Field borders provided by Farm Service Agency as of 5/21/2008

NOT TO SCALE

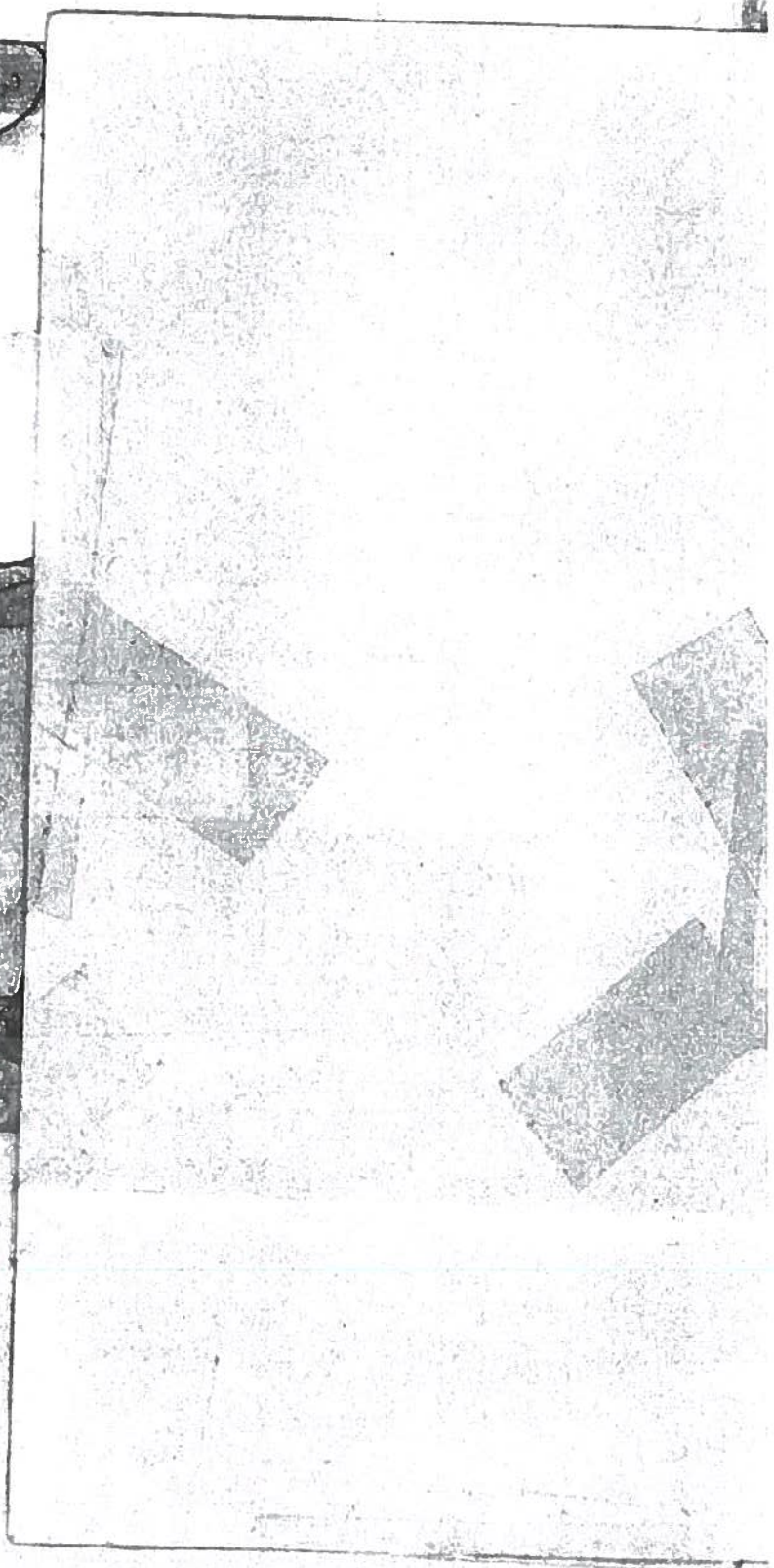
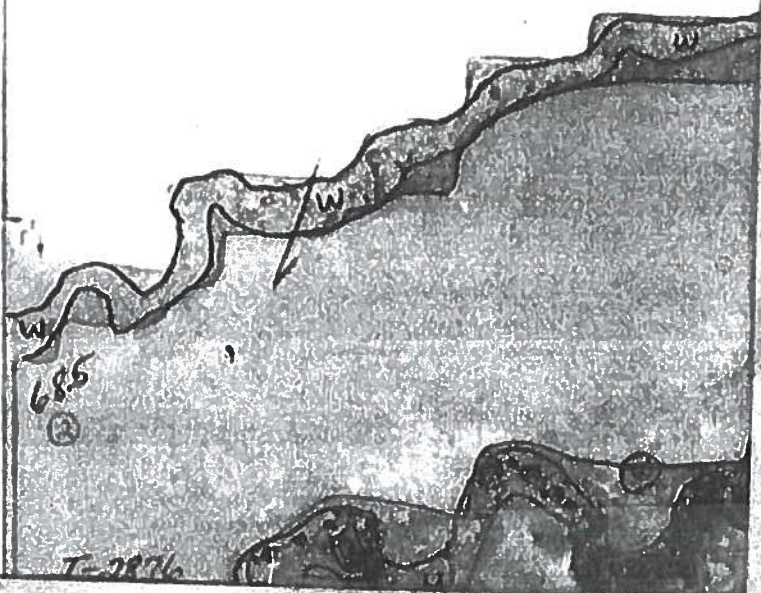
L.S.

Sec 17

Sur 27

③

Lucille



LAND USE MAP

Aerial Map



map center: 45° 26' 57.71", -96° 59' 22.39"



Maps Provided By

CUSTOMER ONLINE MAPPING
© AgriData, Inc. 2017 www.AgridataInc.com

12-123N-51W
Roberts County
South Dakota



12/8/2017

Field borders provided by Farm Service Agency as of 5/21/2008.



Common Land Unit

- Tract Boundary
- Non-Cropland
- Cropland
- PLSS

Wetland Determination Identifiers

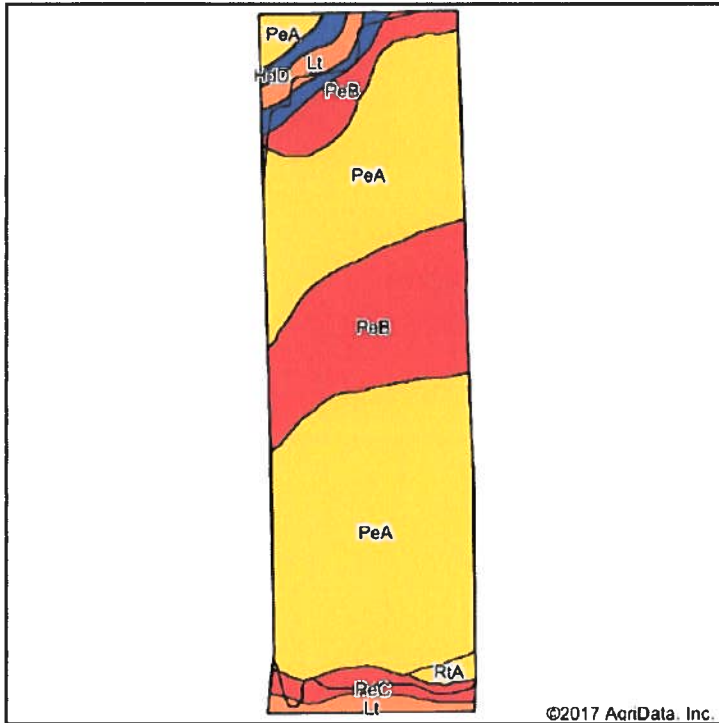
- Restricted Use
- Limited Restrictions
- Exempt from Conservation Compliance Provisions

2018 Program Year
 Map Created December 18, 2017
Farm 1345

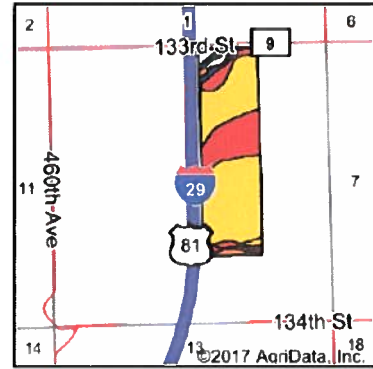
12-123N-51LW

United States Department of Agriculture (USDA) Farm Service Agency (FSA) maps are for FSA Program administration only. This map does not represent a legal survey or reflect actual ownership; rather it depicts the information provided directly from the producer and/or National Agricultural Imagery Program (NAIP) imagery. The producer accepts the data 'as is' and assumes all risks associated with its use. USDA-FSA assumes no responsibility for actual or consequential damage incurred as a result of any user's reliance on this data outside FSA Programs. Wetland identifiers do not represent the size, shape, or specific determination of the area. Refer to your original determination (CPA-026 and attached maps) for exact boundaries and determinations or contact USDA Natural Resources Conservation Service (NRCS).

Soils Map



Soils data provided by USDA and NRCS



State: **South Dakota**
 County: **Roberts**
 Location: **12-123N-51W**
 Township: **Spring Grove**
 Acres: **102.99**
 Date: **12/8/2017**

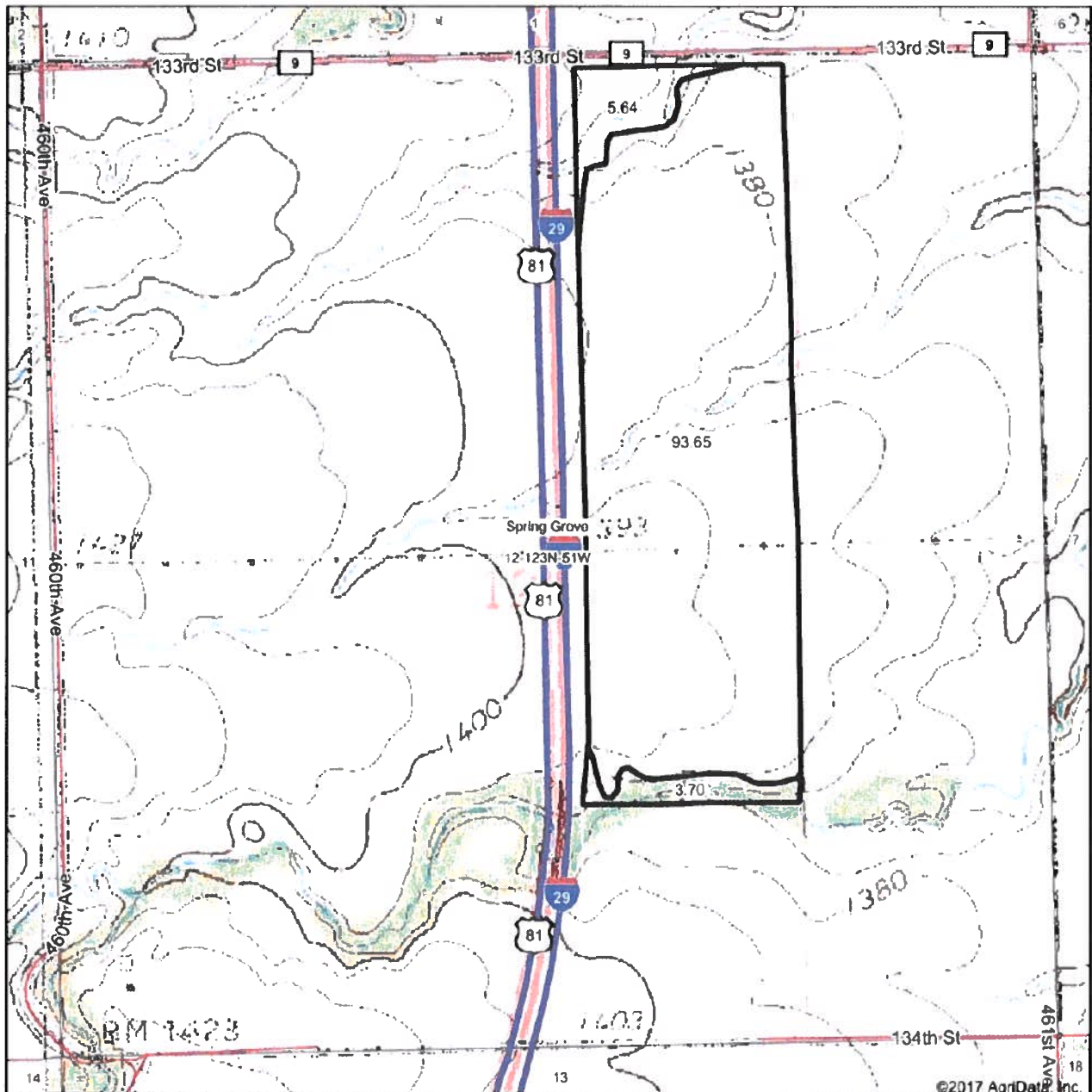


Area Symbol: SD109, Soil Area Version: 18							
Code	Soil Description	Acres	Percent of field	Non-Irr Class Legend	Non-Irr Class *c	Productivity Index	Corn
PeA	Peever clay loam, 0 to 2 percent slopes	66.66	64.7%		IIs	73	
PeB	Peever clay loam, 2 to 6 percent slopes	24.63	23.9%		IIe	68	
Lt	Lamoure silty clay loam, 0 to 2 percent slopes, frequently flooded	4.32	4.2%		Vhw	24	
PeC	Peever clay loam, 6 to 9 percent slopes	3.34	3.2%		IIe	56	53
HdD	Hattie clay loam, 9 to 15 percent slopes	3.12	3.0%		IVe	48	30
RtA	Rentill loam, 0 to 2 percent slopes	0.92	0.9%		IIs	47	43
Weighted Average						68.2	3

*c: Using Capabilities Class Dominant Condition Aggregation Method

Soils data provided by USDA and NRCS

Topography Map



map center: 45° 26' 57.71, -96° 59' 22.39

0ft 830ft 1660ft

Maps Provided by
surety
CUSTOMER ONLINE MAPPING
© AgriData, Inc. 7/17 www.AgridataInc.com

12-123N-51W
Roberts County
South Dakota



12/8/2017

Field borders provided by Farm Service Agency as of 5/21/2008.

NOT TO SCALE

T-508
W

94.5
①

Lucille

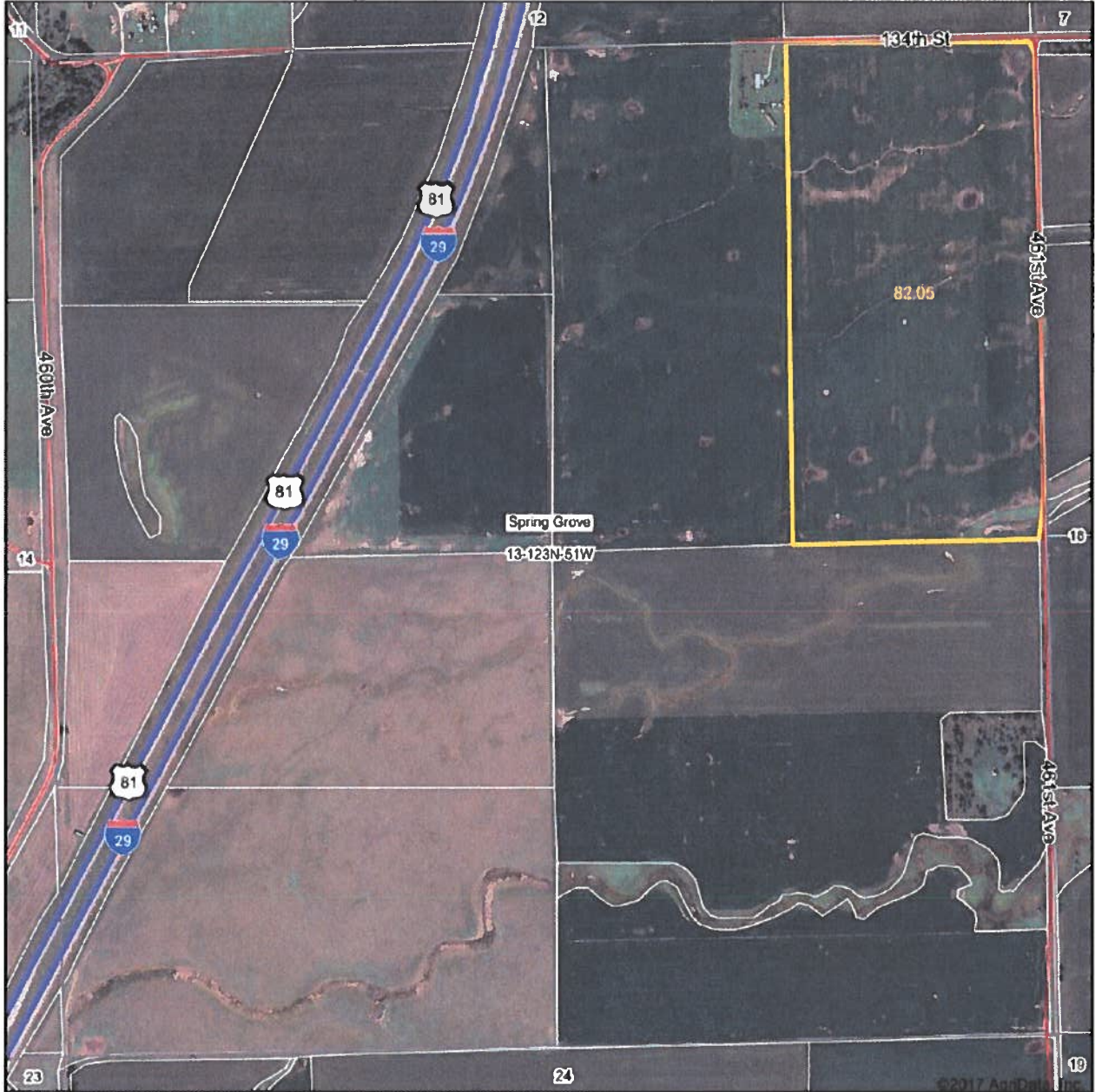
1. (W)

②
③

12

LAND USE MAP

Aerial Map



map center: 45° 26' 5.25, -96° 59' 22.39

0ft 830ft 1660ft

Maps Provided By

© AgriData, Inc. 2017 www.Agridata.com

13-123N-51W
Roberts County
South Dakota



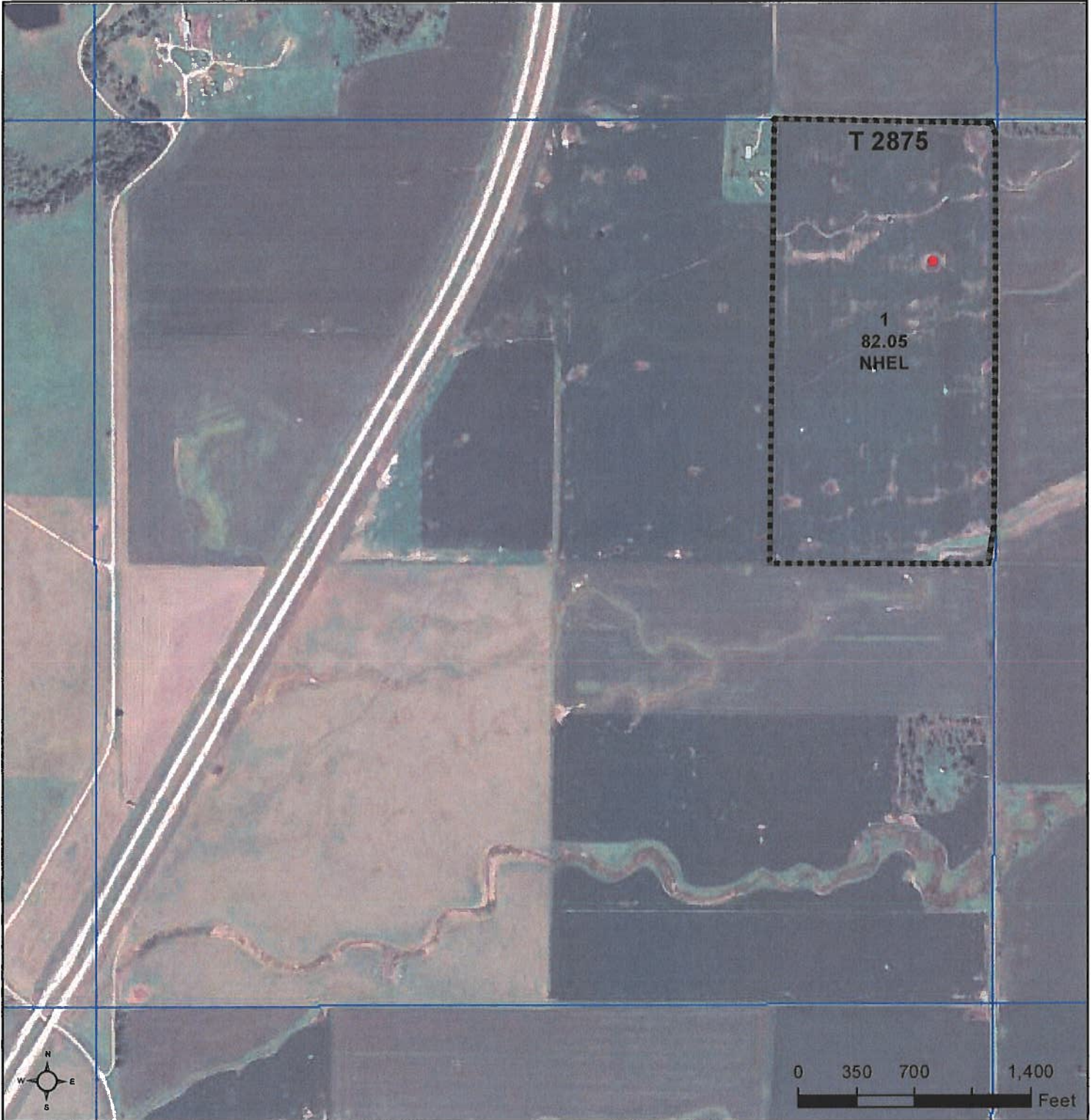
12/8/2017

Field borders provided by Farm Service Agency as of 5/21/2008



United States
Department of
Agriculture

Roberts County, South Dakota



Common Land Unit PLSS

- Cropland
- Tract Boundary

Wetland Determination Identifiers

- Restricted Use
- ▼ Limited Restrictions
- Exempt from Conservation Compliance Provisions

2018 Program Year

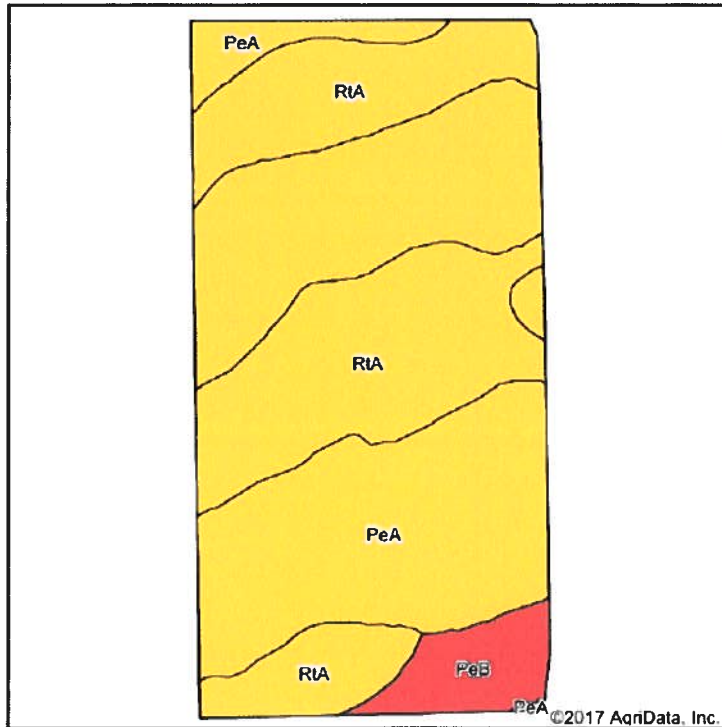
Map Created December 18, 2017

Farm 1345

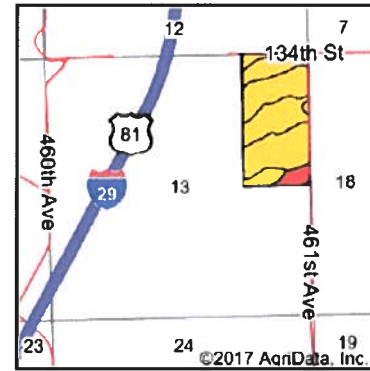
13-123N-51LW

United States Department of Agriculture (USDA) Farm Service Agency (FSA) maps are for FSA Program administration only. This map does not represent a legal survey or reflect actual ownership; rather it depicts the information provided directly from the producer and/or National Agricultural Imagery Program (NAIP) imagery. The producer accepts the data 'as is' and assumes all risks associated with its use. USDA-FSA assumes no responsibility for actual or consequential damage incurred as a result of any user's reliance on this data outside FSA Programs. Wetland identifiers do not represent the size, shape, or specific determination of the area. Refer to your original determination (CPA-026 and attached maps) for exact boundaries and determinations or contact USDA Natural Resources Conservation Service (NRCS).

Soils Map



Soils data provided by USDA and NRCS.



State: **South Dakota**
 County: **Roberts**
 Location: **13-123N-51W**
 Township: **Spring Grove**
 Acres: **82.05**
 Date: **12/8/2017**

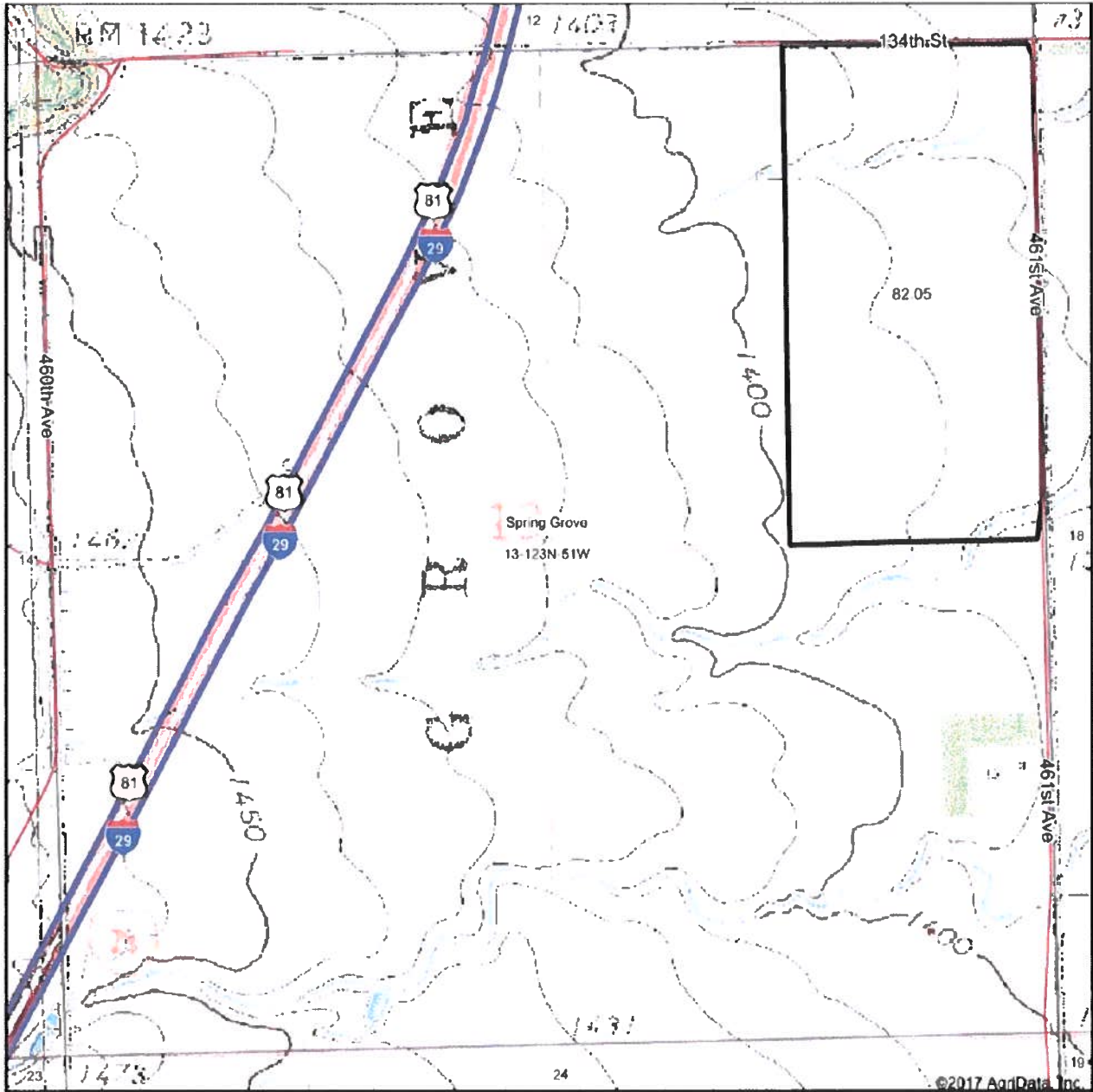


Area Symbol: SD109, Soil Area Version: 18							
Code	Soil Description	Acres	Percent of field	Non-Irr Class Legend	Non-Irr Class *c	Productivity Index	Corn
PeA	Peever clay loam, 0 to 2 percent slopes	44.58	54.3%		IIs	73	
R1A	Rentill loam, 0 to 2 percent slopes	32.82	40.0%		IIs	47	43
PeB	Peever clay loam, 2 to 6 percent slopes	4.65	5.7%		IIIe	68	
Weighted Average						62.3	17.2

*c: Using Capabilities Class Dominant Condition Aggregation Method

Soils data provided by USDA and NRCS.

Topography Map



map center: 45° 26' 5.25, -96° 59' 22.39



13-123N-51W
Roberts County
South Dakota



12/8/2017

Field borders provided by Farm Service Agency as of 5/21/2008

LE ↗

21.0
6

E- (3)
(3)

(3)
Lullie
Vance (3)

(3) (3) (3)
E (3)

1-2-22