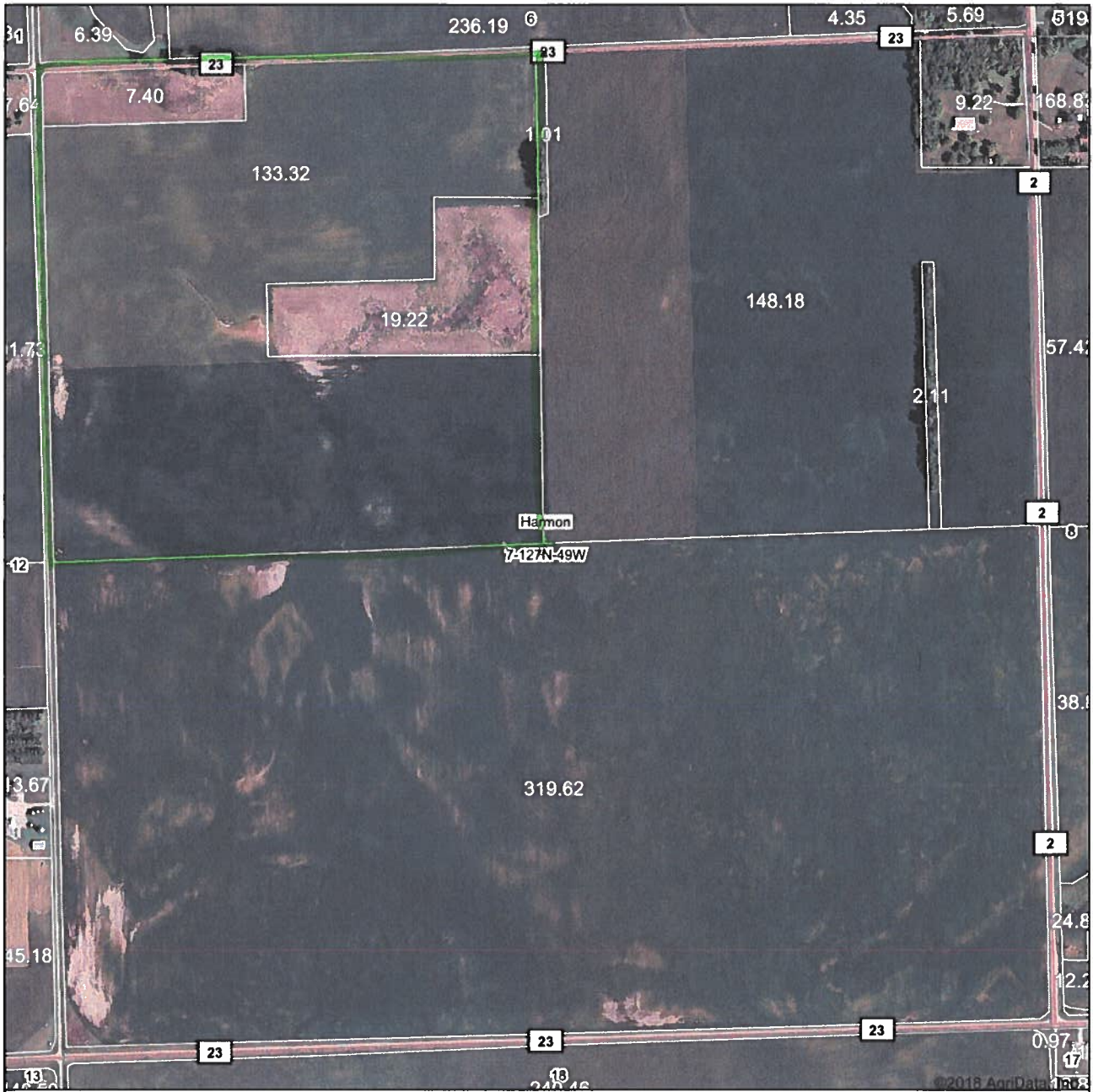
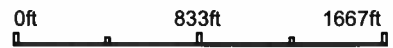


# Aerial Map



map center: 45° 47' 52.49, -96° 50' 39.04



Maps Provided By:  
**surety**  
CUSTOMIZED ONLINE MAPPING  
© Agndata, Inc. 2018 www.AgnDataInc.com

**7-127N-49W**  
**Roberts County**  
**South Dakota**

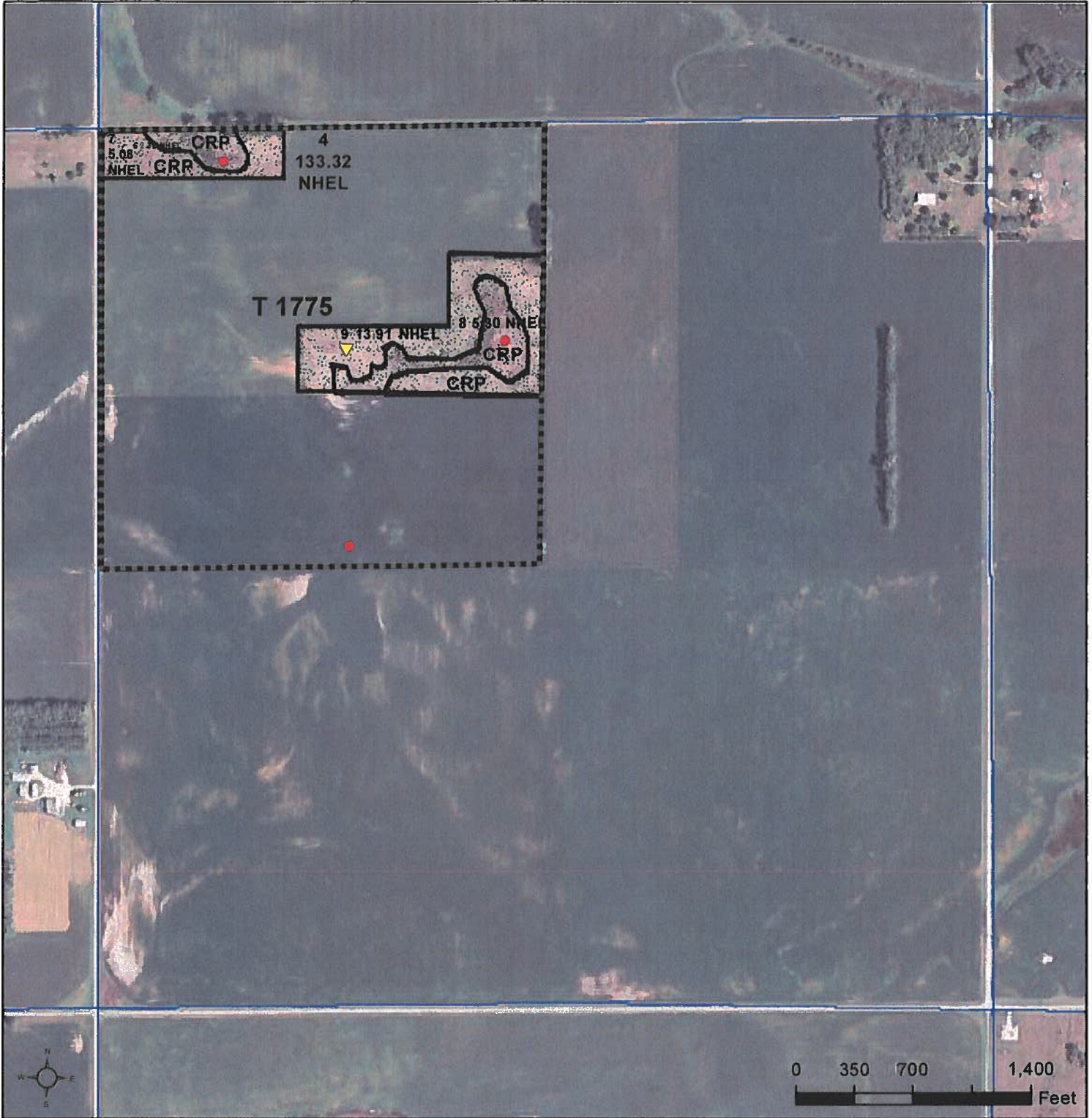


Field borders provided by Farm Service Agency as of 5/21/2008.



United States  
Department of  
Agriculture

# Roberts County, South Dakota



- Common Land Unit**
- Tract Boundary
  - Cropland
  - CRP
  - PLSS

- Wetland Determination Identifiers**
- Restricted Use
  - Limited Restrictions
  - Exempt from Conservation Compliance Provisions

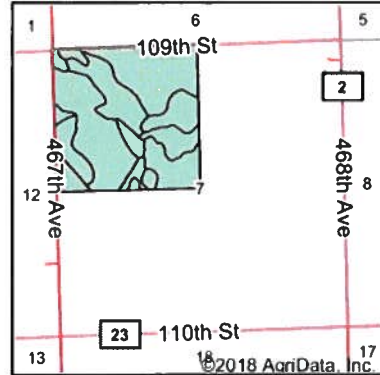
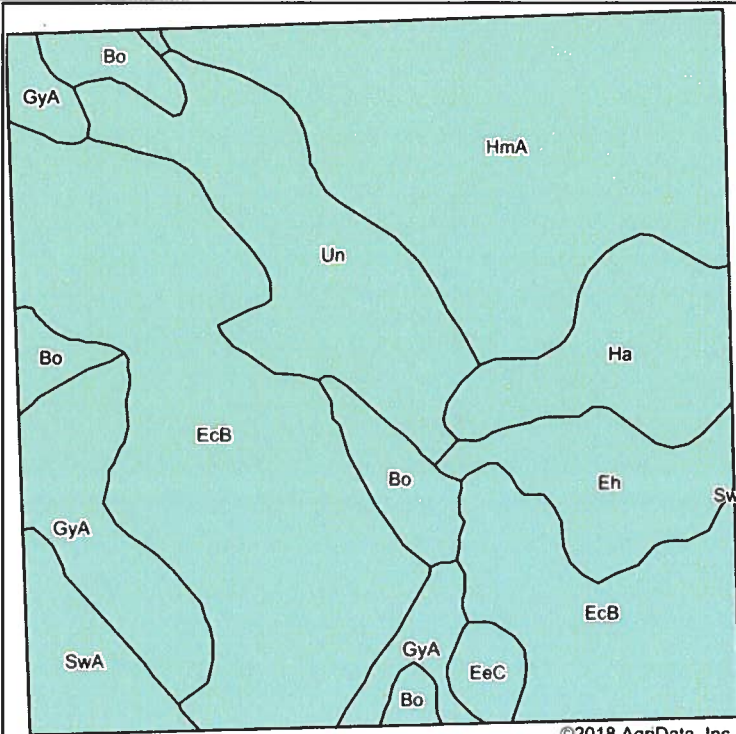
2018 Program Year  
Map Created December 18, 2017

**Farm 3026**

**7-127N-49LW**

United States Department of Agriculture (USDA) Farm Service Agency (FSA) maps are for FSA Program administration only. This map does not represent a legal survey or reflect actual ownership; rather it depicts the information provided directly from the producer and/or National Agricultural Imagery Program (NAIP) imagery. The producer accepts the data 'as is' and assumes all risks associated with its use. USDA-FSA assumes no responsibility for actual or consequential damage incurred as a result of any user's reliance on this data outside FSA Programs. Wetland identifiers do not represent the size, shape, or specific determination of the area. Refer to your original determination (CPA-026 and attached maps) for exact boundaries and determinations or contact USDA Natural Resources Conservation Service (NRCS).

# Soils Map



State: **South Dakota**  
 County: **Roberts**  
 Location: **7-127N-49W**  
 Township: **Harmon**  
 Acres: **164.74**  
 Date: **2/27/2018**



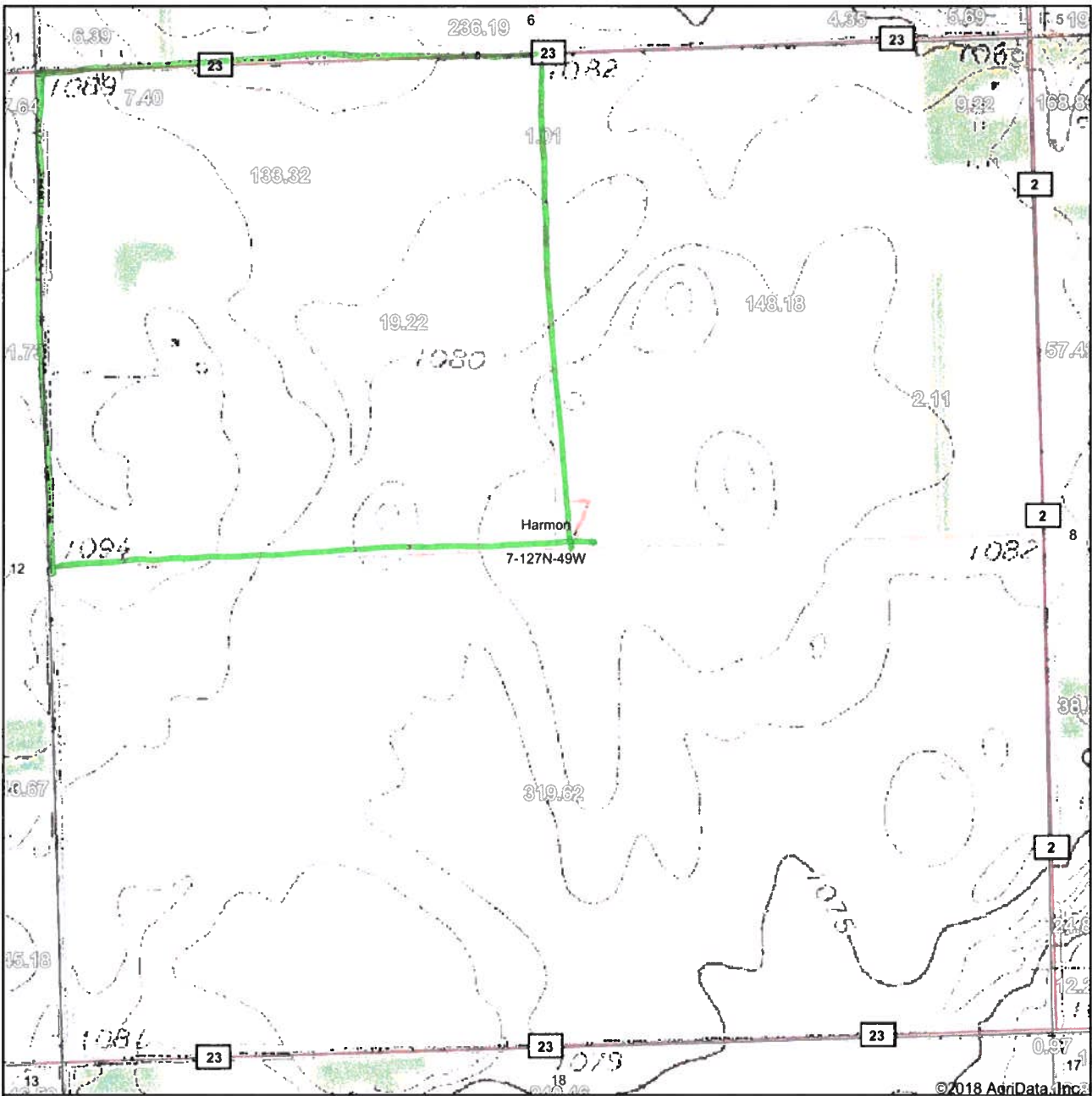
Soils data provided by USDA and NRCS.

Area Symbol: SD109, Soil Area Version: 18

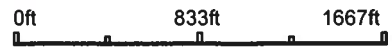
Code	Soil Description	Acres	Percent of field	Non-Irr Class *c	Productivity Index	Corn	Soybeans
EcB	Eckman silt loam, 1 to 6 percent slopes	55.66	33.8%	Ile	83		
HmA	Hecla-Hamar loamy fine sands, 0 to 3 percent slopes	37.94	23.0%	IVs	69	63	24
Un	Ulen sandy loam	19.12	11.6%	IIIs	74	73	23
GyA	Glyndon silt loam, 0 to 3 percent slopes	14.73	8.9%	IIs	76	80	26
Ha	Hamar fine sandy loam	11.55	7.0%	IVw	69	60	23
Eh	Embsden-Hamar fine sandy loams	9.06	5.5%	IIs	67	64	24
Bo	Borup silt loam	8.68	5.3%	IVw	57	54	17
SwA	Sverdrup sandy loam, 0 to 2 percent slopes	5.97	3.6%	IIIs	53		
EeC	Eckman-Zell complex, 6 to 9 percent slopes	2.03	1.2%	IIIe	67	65	24
<b>Weighted Average</b>					<b>73.6</b>	<b>41.5</b>	<b>14.6</b>

\*c: Using Capabilities Class Dominant Condition Aggregation Method

# Topography Map



map center: 45° 47' 52.49, -96° 50' 39.04



Maps Provided By  
**surety**  
CUSTOMIZED ONLINE MAPPING  
© Agridata, Inc. 2018 www.AgridataInc.com

**7-127N-49W**  
**Roberts County**  
**South Dakota**



Field borders provided by Farm Service Agency as of 5/21/2008.

↑  
**NOT TO SCALE**

