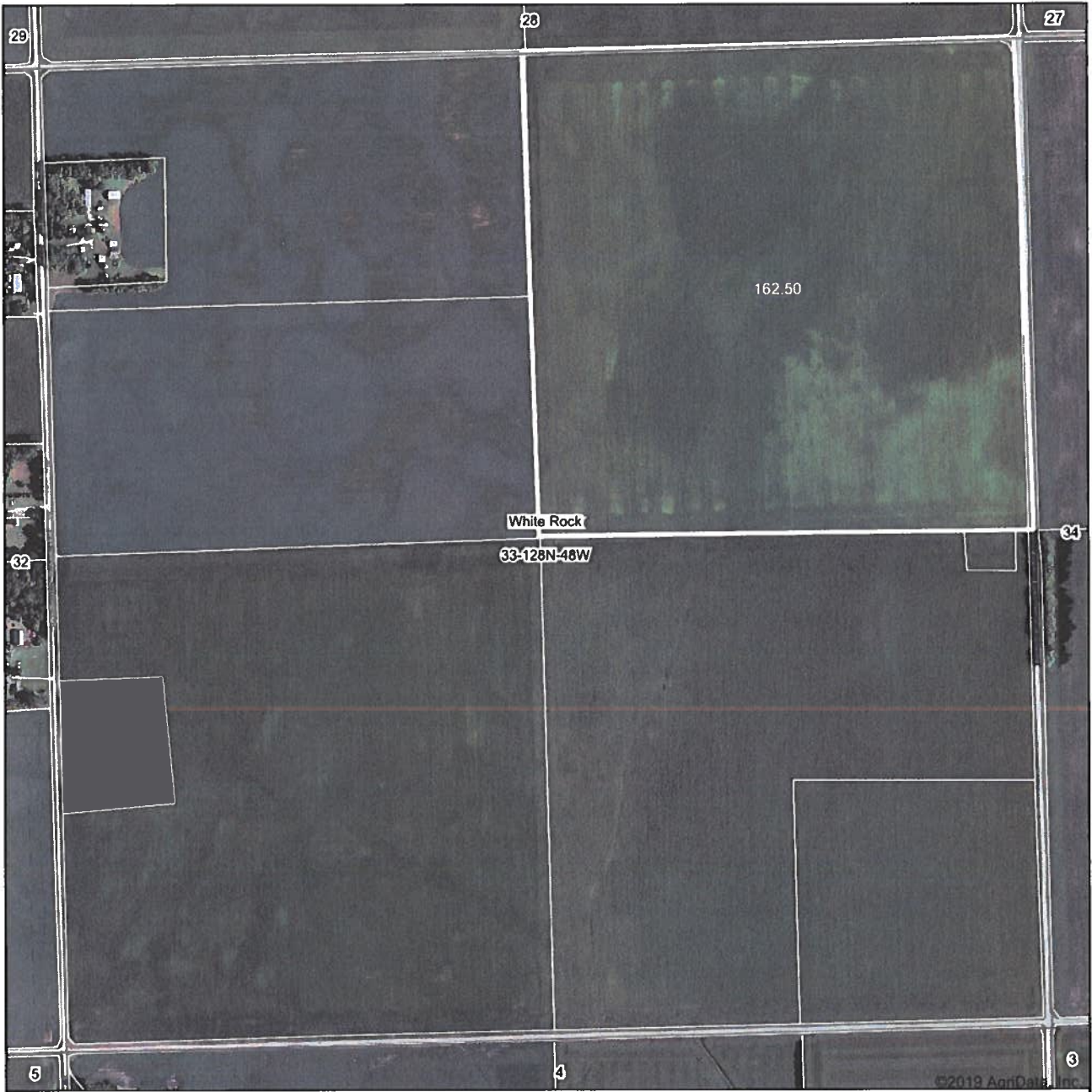
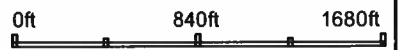


Aerial Map



map center: 45° 49' 37.6, -96° 40' 39.98



33-128N-48W
Roberts County
South Dakota



1/21/2019

Maps Provided By:

CUSTOMIZED ONLINE MAPPING
© AgriData, Inc. 2019 www.AgriDataInc.com

Field borders provided by Farm Service Agency as of 5/21/2008.

TRACT 3

South Dakota

Roberts

Report ID: FSA-156EZ

U.S. Department of Agriculture

Farm Service Agency

Abbreviated 156 Farm Record

FARM: 7787

Prepared: 1/28/19 10:45 AM

Crop Year: 2019

Page: 2 of 2

DISCLAIMER: This is data extracted from the web farm database. Because of potential messaging failures in MIDAS, this data is not guaranteed to be an accurate and complete representation of data contained in the MIDAS system, which is the system of record for Farm Records.

Tract Number: 4412 Description: N19B NE 33 128 48

BIA Range Unit Number:

HEL Status: NHEL: no agricultural commodity planted on undetermined fields

Wetland Status: Tract contains a wetland or farmed wetland

WL Violations: None

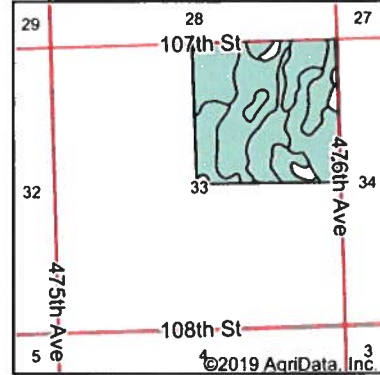
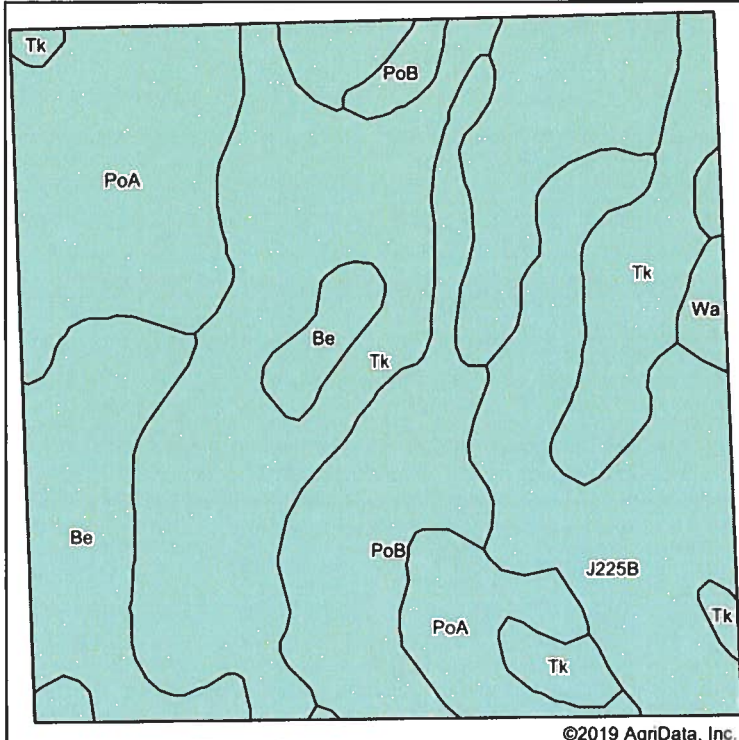
Farmland	Cropland	DCP Cropland	WBP	WRP/EWP	CRP Cropland	GRP
160.31	160.31	160.31	0.0	0.0	0.0	0.0
State Conservation	Other Conservation	Effective DCP Cropland	Double Cropped	MPL/FWP	Native Sod	
0.0	0.0	160.31	0.0	0.0	0.0	

Crop	Base Acreage	CTAP Tran Yield	PLC Yield	CCC-505 CRP Reduction
CORN	78.69		141	0.0
SOYBEANS	72.56		45	0.0
Total Base Acres:	151.25			

Owners: ALFRED SCHARNBERG TRUST

Other Producers: None

Soils Map



State: **South Dakota**
 County: **Roberts**
 Location: **33-128N-48W**
 Township: **White Rock**



Soils data provided by USDA and NRCS.

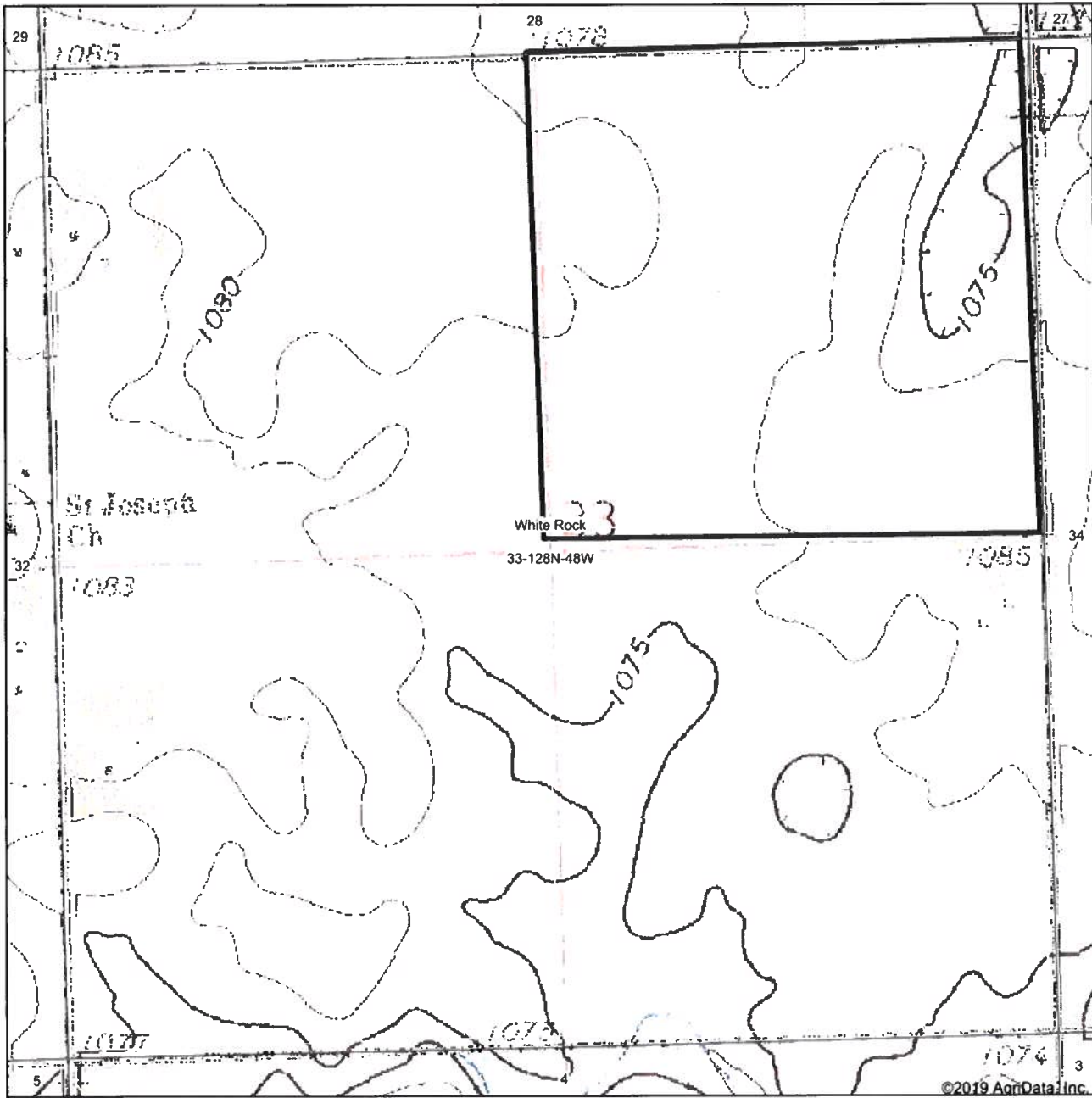
Area Symbol: SD109, Soil Area Version: 19

Code	Soil Description	Acres	Percent of field	Non-Irr Class *c	Productivity Index	Corn	Soybeans	*n NCCPI Soybeans
Tk	Tonka silty clay loam, 0 to 1 percent slopes	50.77	31.2%	IVw	58			15
PoA	Poinsett-Waubay silty clay loams, 0 to 2 percent slopes	44.87	27.6%	Is	93			75
J225B	Forman-Aastad complex, 1 to 4 percent slopes	26.18	16.1%	Ile	88			68
PoB	Poinsett-Waubay silty clay loams, 1 to 6 percent slopes	20.53	12.6%	Ile	89			74
Be	Bearden silty clay loam	18.61	11.5%	Ils	78	80	26	51
Wa	Waubay silty clay loam, 0 to 2 percent slopes	1.54	0.9%	Iw	98			81
Weighted Average					79.1	9.2	3	*n 52.3

*n: The aggregation method is "Weighted Average using major components"
 *c: Using Capabilities Class Dominant Condition Aggregation Method

Soils data provided by USDA and NRCS.

Topography Map



map center: 45° 49' 37.6, -96° 40' 39.98



Maps Provided By

CUSTOMIZED ONLINE MAPPING
© AgriData, Inc 2019 www.AgriDataInc.com

33-128N-48W
Roberts County
South Dakota



1/21/2019

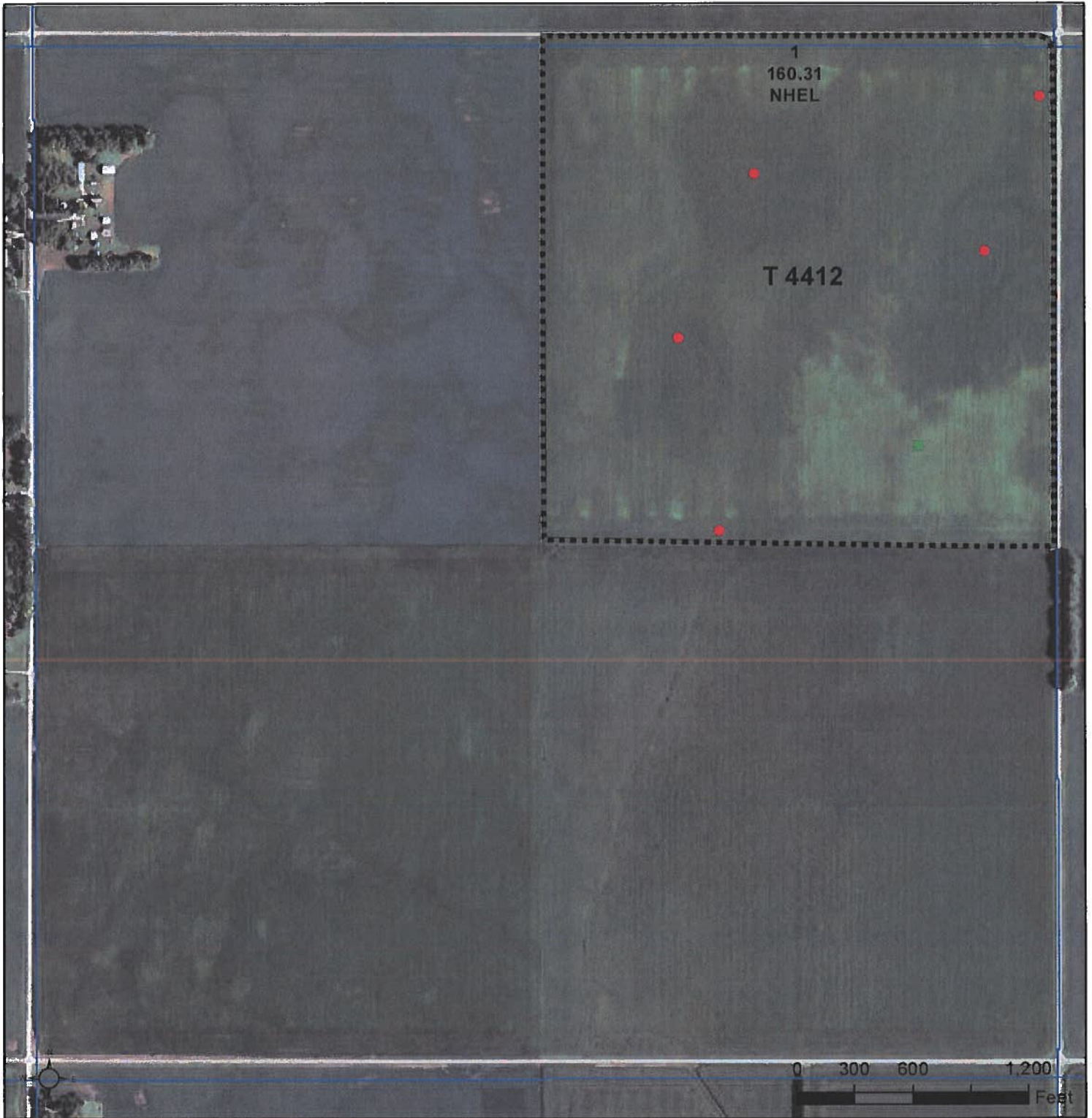
Field borders provided by Farm Service Agency as of 5/21/2008.

TRACT 3



United States
Department of
Agriculture

Roberts County, South Dakota



Common Land Unit PLSS

- Cropland
- Tract Boundary

Wetland Determination Identifiers

- Restricted Use
- ▼ Limited Restrictions
- Exempt from Conservation
- Compliance Provisions

TRACT 3

2018 Program Year

Map Created May 03, 2018

Farm 7787

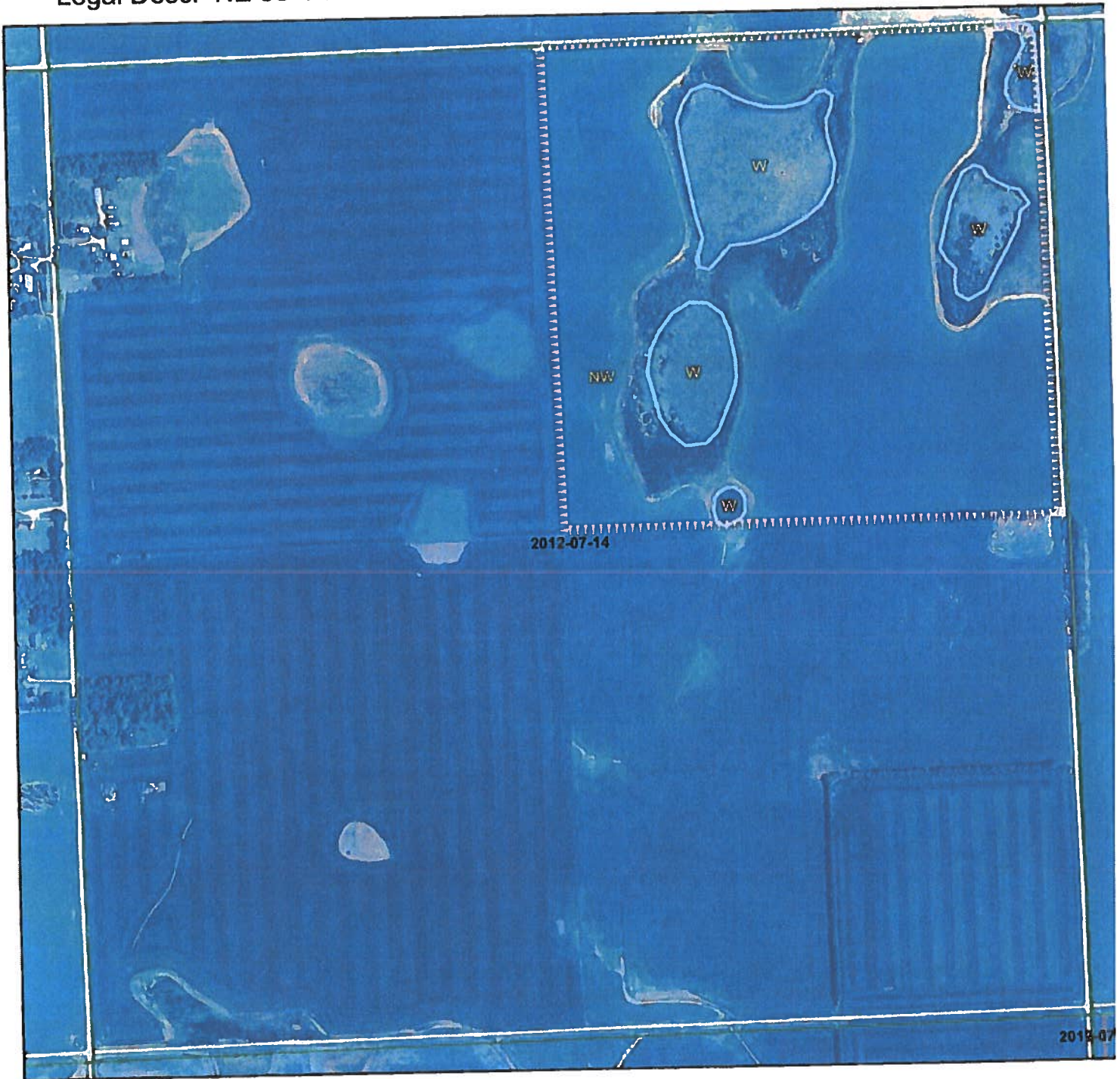
33-128N-48LW

United States Department of Agriculture (USDA) Farm Service Agency (FSA) maps are for FSA Program administration only. This map does not represent a legal survey or reflect actual ownership; rather it depicts the information provided directly from the producer and/or National Agricultural Imagery Program (NAIP) imagery. The producer accepts the data 'as is' and assumes all risks associated with its use. USDA-FSA assumes no responsibility for actual or consequential damage incurred as a result of any user's reliance on this data outside FSA Programs. Wetland identifiers do not represent the size, shape, or specific determination of the area. Refer to your original determination (CPA-026 and attached maps) for exact boundaries and determinations or contact USDA Natural Resources Conservation Service (NRCS).

Certified Wetland Determination

Field Office: SissetonFO
 Certified By: Kyle Monteith
 Legal Desc: NE 33-128-48

Agency: USDA-NRCS
 Certified Date:
 Tract: 4412



Legend

- Certified Wetland Determination Boundary
- Wetlands
- Wetlands
- Ditch
- NI
- NI/Ditch
- Tile



W	Wetland
FW	Farmed Wetland Drained or modified & cropped prior to 12-23-1985, but still meets wetland criteria
PC	Prior Converted
NW	Non Wetland



TRACT 3

3
 tional info.