



South Dakota  
 Roberts  
 Report ID: FSA-156EZ

U.S. Department of Agriculture  
 Farm Service Agency  
 Abbreviated 156 Farm Record

FARM: 9670  
 Prepared: 1/28/19 10:45 AM  
 Crop Year: 2019  
 Page: 1 of 1

DISCLAIMER: This is data extracted from the web farm database. Because of potential messaging failures in MIDAS, this data is not guaranteed to be an accurate and complete representation of data contained in the MIDAS system, which is the system of record for Farm Records.

Operator Name Farm Identifier Recon Number  
 Split 7788 into 9669-9670

Farms Associated with Operator:  
 None

CRP Contract Number(s): None

Farmland	Cropland	DCP Cropland	WBP	WRP/EWP	CRP Cropland	GRP	Farm Status	Number of Tracts
312.61	307.19	307.19	0.0	0.0	0.0	0.0	Active	1
State Conservation	Other Conservation	Effective DCP Cropland	Double Cropped	MPL/FWP	Native Sod			
0.0	0.0	307.19	0.0	0.0	0.0			

ARC/PLC			
ARC-IC NONE	ARC-CO CORN , SOYBN	PLC NONE	PLC-Default NONE

Crop	Base Acreage	CTAP Tran Yield	PLC Yield	CCC-505 CRP Reduction
CORN	160.41		160	0.0
SOYBEANS	131.29		45	0.0
<b>Total Base Acres:</b>	<b>291.7</b>			

Tract Number: 11746 Description: N19A W2 21 128 48

BIA Range Unit Number:

HEL Status: NHEL: no agricultural commodity planted on undetermined fields

Wetland Status: Tract contains a wetland or farmed wetland

WL Violations: None

Farmland	Cropland	DCP Cropland	WBP	WRP/EWP	CRP Cropland	GRP
312.61	307.19	307.19	0.0	0.0	0.0	0.0
State Conservation	Other Conservation	Effective DCP Cropland	Double Cropped	MPL/FWP	Native Sod	
0.0	0.0	307.19	0.0	0.0	0.0	

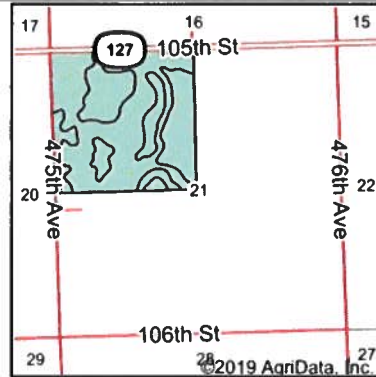
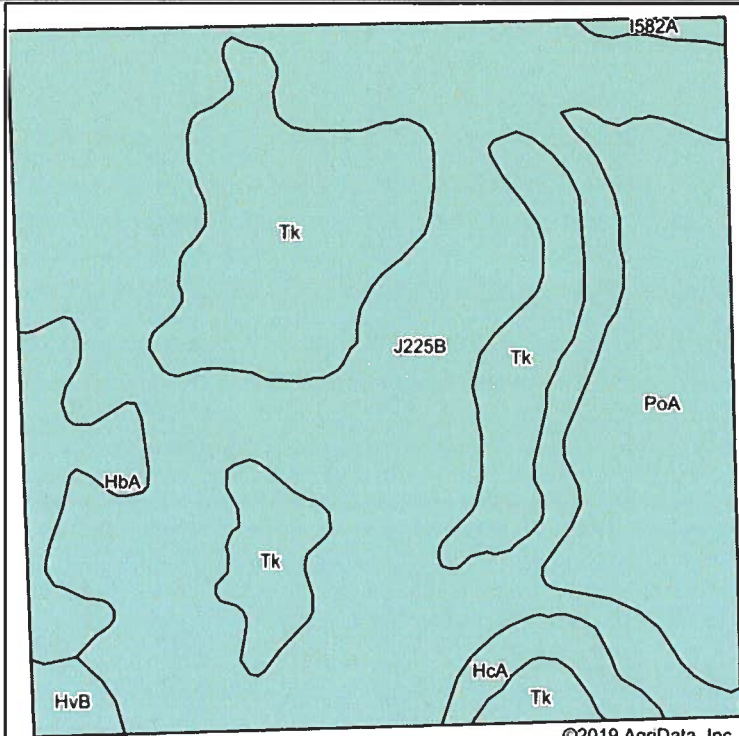
Crop	Base Acreage	CTAP Tran Yield	PLC Yield	CCC-505 CRP Reduction
CORN	160.41		160	0.0
SOYBEANS	131.29		45	0.0
<b>Total Base Acres:</b>	<b>291.7</b>			

Owners: ALFRED SCHARNBERG TRUST

Other Producers:

# TRACT 1

# Soils Map



State: **South Dakota**  
 County: **Roberts**  
 Location: **21-128N-48W**  
 Township: **White Rock**

Soils data provided by USDA and NRCS.

©2019 AgriData, Inc.



Area Symbol: SD109, Soil Area Version: 19

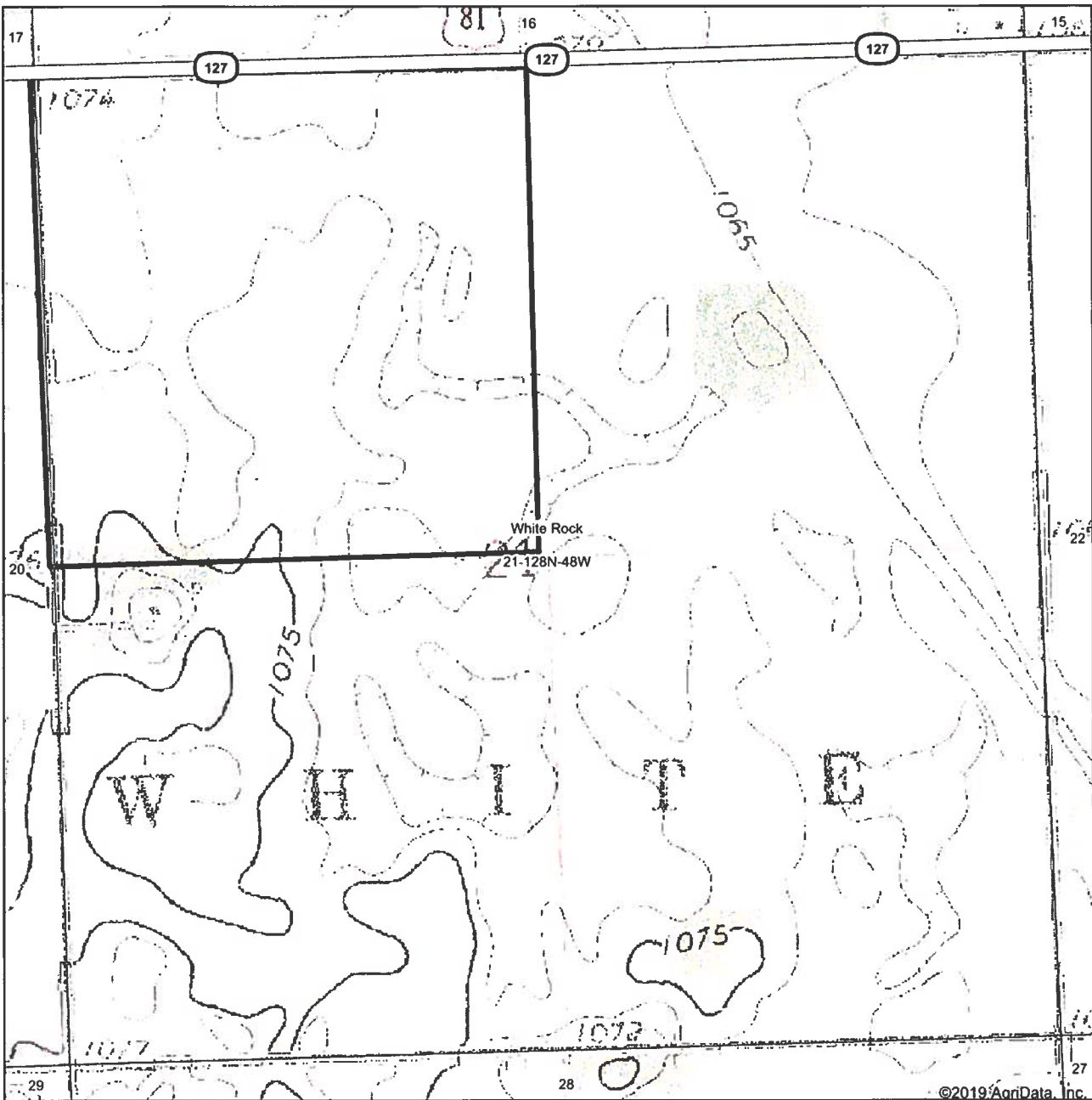
Code	Soil Description	Acres	Percent of field	Non-Irr Class *c	Productivity Index	Corn	Soybeans	*n NCCPI Soybeans
J225B	Forman-Aastad complex, 1 to 4 percent slopes	90.09	56.4%	Ile	88			68
Tk	Tonka silty clay loam, 0 to 1 percent slopes	33.00	20.7%	IVw	58			15
PoA	Poinsett-Waubay silty clay loams, 0 to 2 percent slopes	23.78	14.9%	Is	93			75
HbA	Hamerly-Tonka complex, 0 to 3 percent slopes	6.74	4.2%	Ils	69	70	23	42
HcA	Hamerly-Vallers loams, 0 to 2 percent slopes	3.38	2.1%	Ils	71	70	22	57
HvB	Heimdal-Svea loams, 2 to 6 percent slopes	1.82	1.1%	Ile	83	82	31	54
I582A	Doran loam, 0 to 2 percent slopes	0.86	0.5%	Ilc	87			67
<b>Weighted Average</b>					<b>81.3</b>	<b>5.4</b>	<b>1.8</b>	<b>*n 56.6</b>

\*n: The aggregation method is "Weighted Average using major components"  
 \*c: Using Capabilities Class Dominant Condition Aggregation Method

Soils data provided by USDA and NRCS.

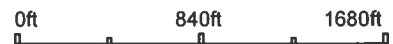
# TRACT 1

# Topography Map



©2019 AgriData, Inc.

map center: 45° 51' 23.05, -96° 40' 41



Maps Provided By:  
  
CUSTOMIZED ONLINE MAPPING  
© AgriData, Inc 2019 www.AgriDataInc.com

**21-128N-48W**  
**Roberts County**  
**South Dakota**



1/21/2019

Field borders provided by Farm Service Agency as of 5/21/2008.

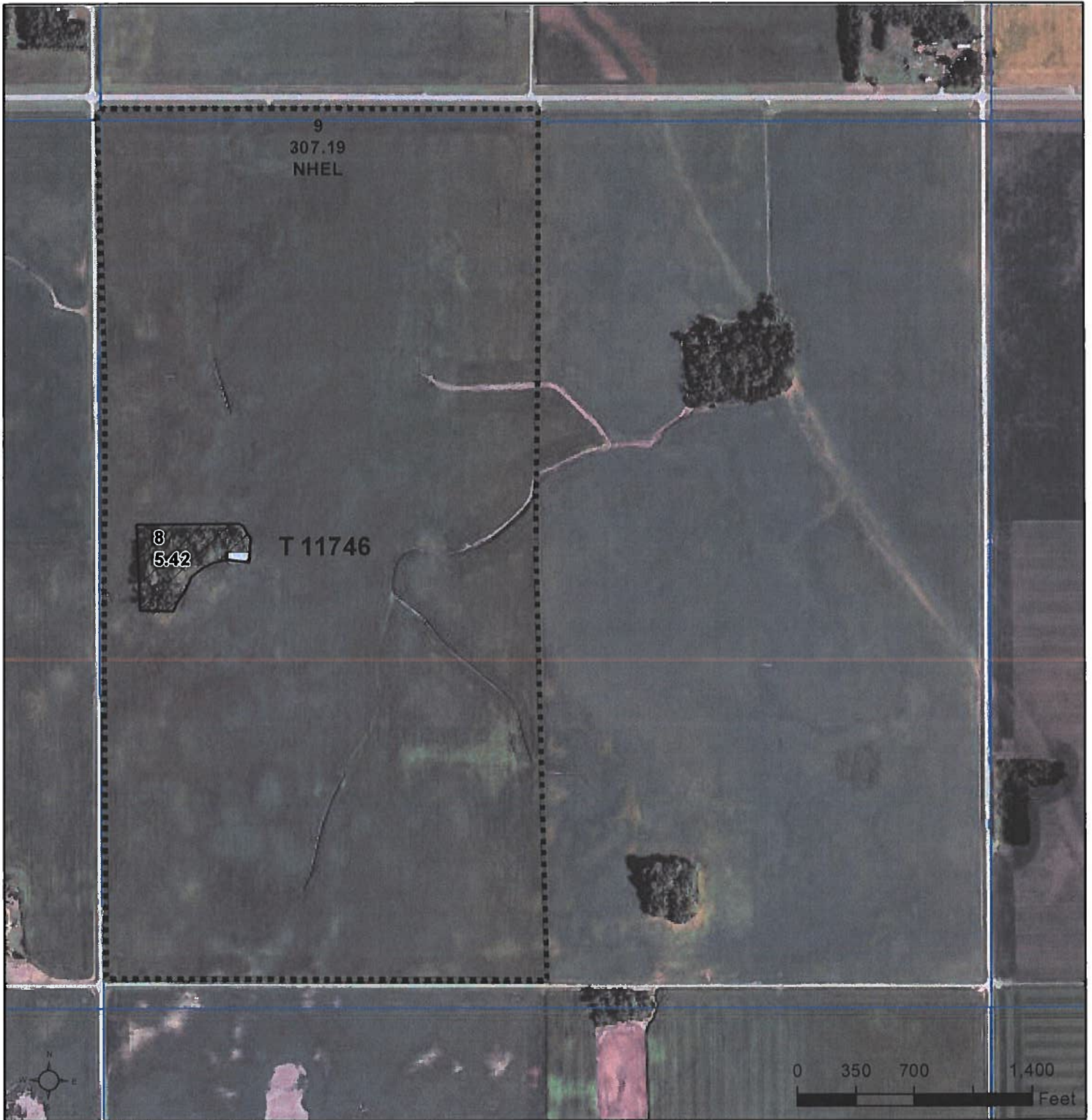
# TRACT 1





United States  
Department of  
Agriculture

# Roberts County, South Dakota



**Common Land Unit** Tract Boundary  
 Non-Cropland PLSS  
 Cropland

**Wetland Determination Identifiers**

- Restricted Use
- Limited Restrictions
- Exempt from Conservation
- Compliance Provisions

## TRACT 1

**2018 Program Year**

Map Created May 03, 2018

**Farm 9670**

**21-128N-48LW**

United States Department of Agriculture (USDA) Farm Service Agency (FSA) maps are for FSA Program administration only. This map does not represent a legal survey or reflect actual ownership; rather it depicts the information provided directly from the producer and/or National Agricultural Imagery Program (NAIP) imagery. The producer accepts the data 'as is' and assumes all risks associated with its use. USDA-FSA assumes no responsibility for actual or consequential damage incurred as a result of any user's reliance on this data outside FSA Programs. Wetland identifiers do not represent the size, shape, or specific determination of the area. Refer to your original determination (CPA-026 and attached maps) for exact boundaries and determinations or contact USDA Natural Resources Conservation Service (NRCS).

# Certified Wetland Determination

Field Office: Sisseton Field Office  
 Certified By: Brandon DeFoe  
 Legal Desc: S 21, T 128N, R 48W

Agency: USDA-NRCS  
 Certified Date: 9/29/2015  
 Tract: 11746



Legend	
	Certified Wetland Determination Boundary
	Wetlands
	Wetlands Ditch
	NI
	NI/Ditch
	Tile

W	Wetland
FW	Farmed Wetland Drained or modified & cropped prior to 12-23-1985, but still meets wetland criteria
PC	Prior Converted
NW	Non Wetland

## TRACT 1







South Dakota  
Roberts

U.S. Department of Agriculture  
Farm Service Agency  
Abbreviated 156 Farm Record

Report ID: FSA-156EZ

FARM: 9670

Prepared: 1/28/19 10:35 AM

Crop Year: 2019

Page: 1 of 1

DISCLAIMER: This is data extracted from the web farm database. Because of potential messaging failures in MIDAS, this data is not guaranteed to be an accurate and complete representation of data contained in the MIDAS system, which is the system of record for Farm Records.

Operator Name: Farms Associated with Operator: None  
Farm Identifier: Split 7788 into 9669-9670  
Recon Number:

CRP Contract Number(s): None

Farmland	Cropland	DCP Cropland	WBP	WRP/EWP	CRP Cropland	GRP	Farm Status	Number of Tracts
312.61	307.19	307.19	0.0	0.0	0.0	0.0	Active	1
State Conservation	Other Conservation	Effective DCP Cropland	Double Cropped	MPL/FWP	Native Sod			
0.0	0.0	307.19	0.0	0.0	0.0			

ARC/PLC			
ARC-IC NONE	ARC-CO CORN, SOYBN	PLC NONE	PLC-Default NONE

Crop	Base Acreage	CTAP Tran Yield	PLC Yield	CCC-505 CRP Reduction
CORN	160.41		160	0.0
SOYBEANS	131.29		45	0.0
Total Base Acres:	291.7			

Tract Number: 11746 Description: N19A W2 21 128 48

BIA Range Unit Number:

HEL Status: NHEL: no agricultural commodity planted on undetermined fields

Wetland Status: Tract contains a wetland or farmed wetland

WL Violations: None

Farmland	Cropland	DCP Cropland	WBP	WRP/EWP	CRP Cropland	GRP
312.61	307.19	307.19	0.0	0.0	0.0	0.0
State Conservation	Other Conservation	Effective DCP Cropland	Double Cropped	MPL/FWP	Native Sod	
0.0	0.0	307.19	0.0	0.0	0.0	

Crop	Base Acreage	CTAP Tran Yield	PLC Yield	CCC-505 CRP Reduction
CORN	160.41		160	0.0
SOYBEANS	131.29		45	0.0
Total Base Acres:	291.7			

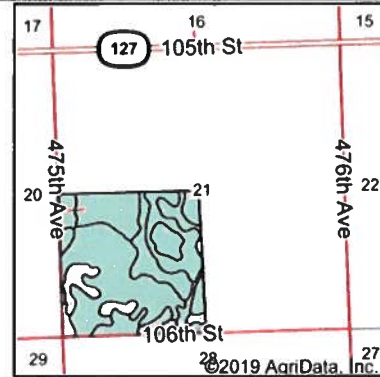
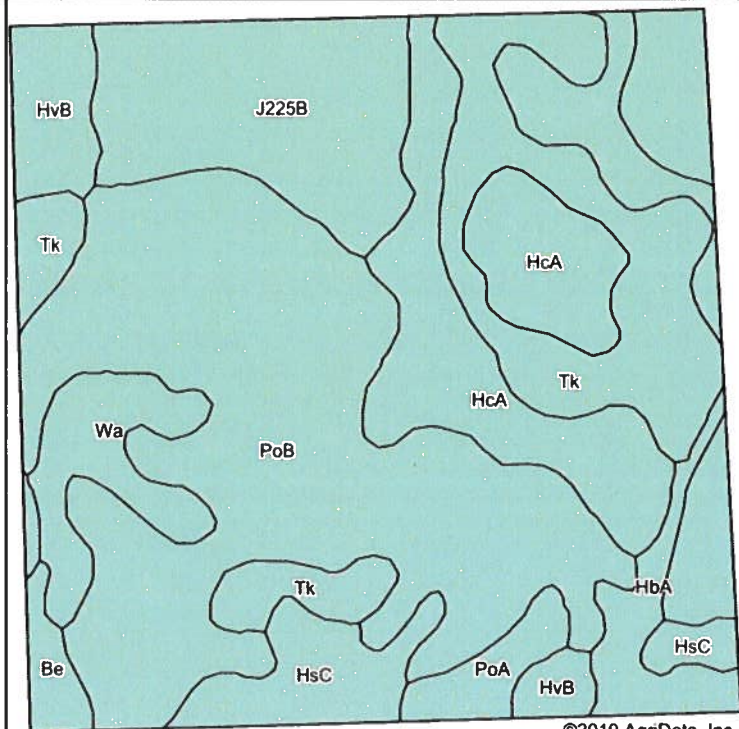
Owners: ALFRED SCHARNBERG TRUST

Other Producers:

TRACT 1



## Soils Map



State: **South Dakota**  
 County: **Roberts**  
 Location: **21-128N-48W**  
 Township: **White Rock**

Soils data provided by USDA and NRCS.

©2019 AgriData, Inc.

Maps Provided By:  
  
 CUSTOMIZED ONLINE MAPPING  
 © AgriData, Inc. 2019      www.AgridataInc.com



Area Symbol: SD109, Soil Area Version: 19

Code	Soil Description	Acres	Percent of field	Non-Irr Class *c	Productivity Index	Corn	Soybeans	*n NCCPI Soybeans
PoB	Poinsett-Waubay silty clay loams, 1 to 6 percent slopes	54.19	34.0%	Ile	89			74
HcA	Hamerly-Vallers loams, 0 to 2 percent slopes	26.33	16.5%	IIs	71	70	22	57
J225B	Forman-Aastad complex, 1 to 4 percent slopes	25.14	15.8%	Ile	88			68
Tk	Tonka silty clay loam, 0 to 1 percent slopes	22.77	14.3%	IVw	58			15
HsC	Esmond-Sisseton-Heimdal, complex, 2 to 12 percent slopes, moderately eroded	7.66	4.8%	IVe	58			43
Wa	Waubay silty clay loam, 0 to 2 percent slopes	7.18	4.5%	Iw	98			81
HvB	Heimdal-Svea loams, 2 to 6 percent slopes	6.06	3.8%	Ile	83	82	31	54
HbA	Hamerly-Tonka complex, 0 to 3 percent slopes	4.79	3.0%	IIs	69	70	23	42
PoA	Poinsett-Waubay silty clay loams, 0 to 2 percent slopes	3.15	2.0%	Is	93			75
Be	Bearden silty clay loam	2.08	1.3%	IIs	78	80	26	51
<b>Weighted Average</b>					<b>79.5</b>	<b>17.8</b>	<b>5.8</b>	<b>*n 58.6</b>

\*n: The aggregation method is "Weighted Average using major components"  
 \*c: Using Capabilities Class Dominant Condition Aggregation Method

Soils data provided by USDA and NRCS.

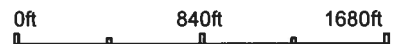
# TRACT 1

# Topography Map



©2019 AgriData, Inc.

map center: 45° 51' 23.05, -96° 40' 41



Maps Provided By:  
  
CUSTOMIZED ONLINE MAPPING  
© AgriData, Inc. 2019 www.AgriDataInc.com

**21-128N-48W**  
**Roberts County**  
**South Dakota**



1/21/2019

Field borders provided by Farm Service Agency as of 5/21/2008.


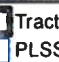
# TRACT 1







**Common Land Unit**

 Non-Cropland  
 Cropland


 Tract Boundary  

 PLSS

**Wetland Determination Identifiers**

-  Restricted Use
-  Limited Restrictions
-  Exempt from Conservation Compliance Provisions

# TRACT 1

2018 Program Year

Map Created May 03, 2018

Farm 9670

21-128N-48LW

United States Department of Agriculture (USDA) Farm Service Agency (FSA) maps are for FSA Program administration only. This map does not represent a legal survey or reflect actual ownership; rather it depicts the information provided directly from the producer and/or National Agricultural Imagery Program (NAIP) imagery. The producer accepts the data 'as is' and assumes all risks associated with its use. USDA-FSA assumes no responsibility for actual or consequential damage incurred as a result of any user's reliance on this data outside FSA Programs. Wetland identifiers do not represent the size, shape, or specific determination of the area. Refer to your original determination (CPA-026 and attached maps) for exact boundaries and determinations or contact USDA Natural Resources Conservation Service (NRCS).



