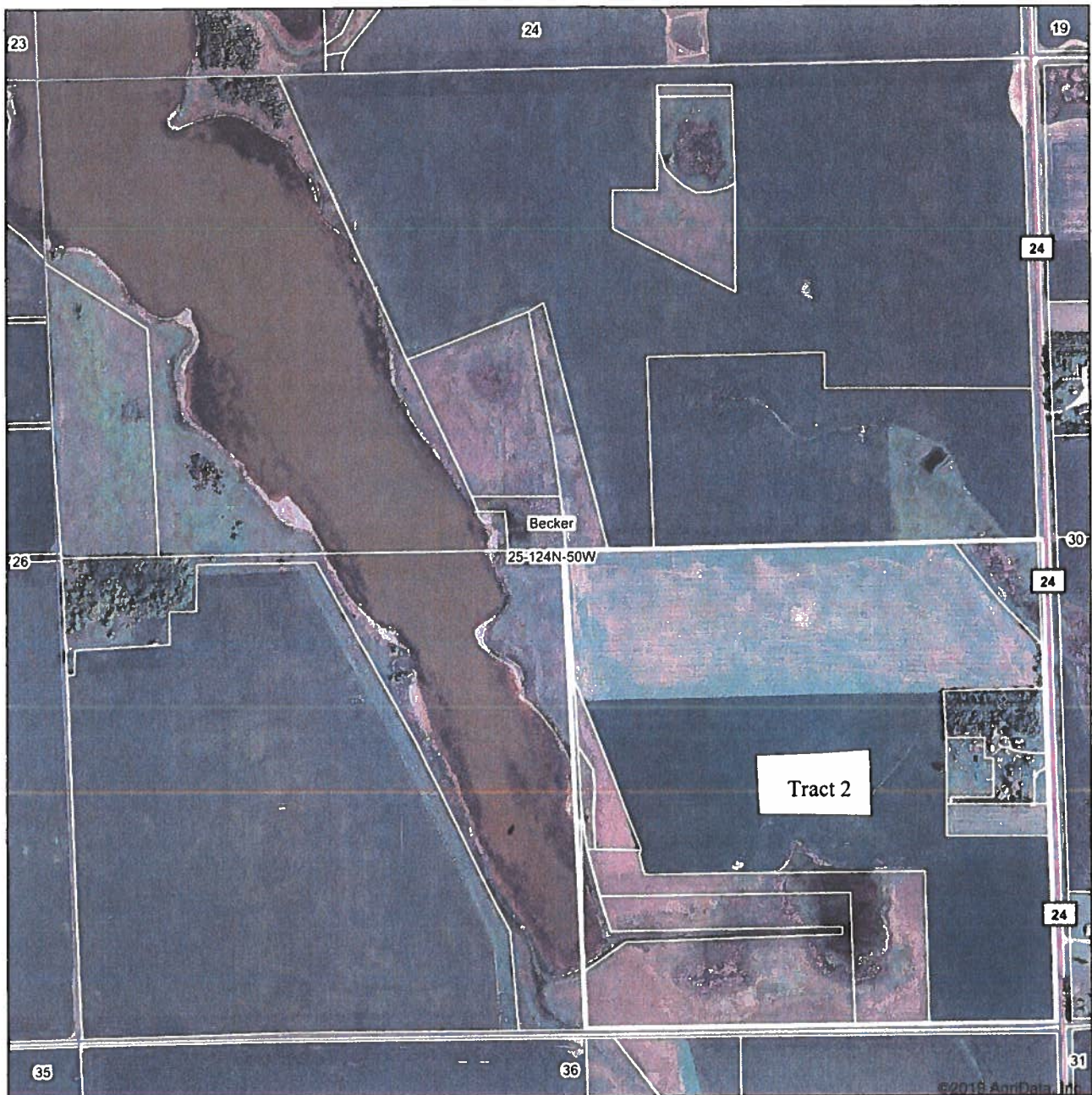


## Aerial Map



map center: 45° 31' 17.91, -96° 52' 20.62

0ft 856ft 1713ft

Maps Provided By  
**surety**  
CUSTOMIZED ONLINE MAPPING  
© AgriData, Inc. 2019 www.AgrDataInc.com

**25-124N-50W**  
**Roberts County**  
**South Dakota**



Field borders provided by Farm Service Agency as of 5/21/2008

# TRACT 2

South Dakota

Roberts

Report ID: FSA-156EZ

U.S. Department of Agriculture

Farm Service Agency

**Abbreviated 156 Farm Record**

**FARM: 9396**

Prepared: 1/28/19 11:57 AM

Crop Year: 2019

Page: 7 of 7

**DISCLAIMER:** This is data extracted from the web farm database. Because of potential messaging failures in MIDAS, this data is not guaranteed to be an accurate and complete representation of data contained in the MIDAS system, which is the system of record for Farm Records.

Tract Number: 11657      Description: I9 SE 25 124 50 LESS ADD'S

BIA Range Unit Number:

HEL Status: NHEL: no agricultural commodity planted on undetermined fields

Wetland Status: Tract contains a wetland or farmed wetland

WL Violations: None

Farmland	Cropland	DCP Cropland	WBP	WRP/EWP	CRP Cropland	GRP
146.53	139.38	139.38	0.0	0.0	37.17	0.0
State Conservation	Other Conservation	Effective DCP Cropland	Double Cropped	MPL/FWP	Native Sod	
0.0	0.0	102.21	0.0	0.0	0.0	

Crop	Base Acreage	CTAP Tran Yield	PLC Yield	CCC-505 CRP Reduction
WHEAT	7.32		47	0.0
CORN	37.4		127	0.0
SOYBEANS	41.75		36	0.0
Total Base Acres:	86.47			

Owners: SCHILDT FAM TR

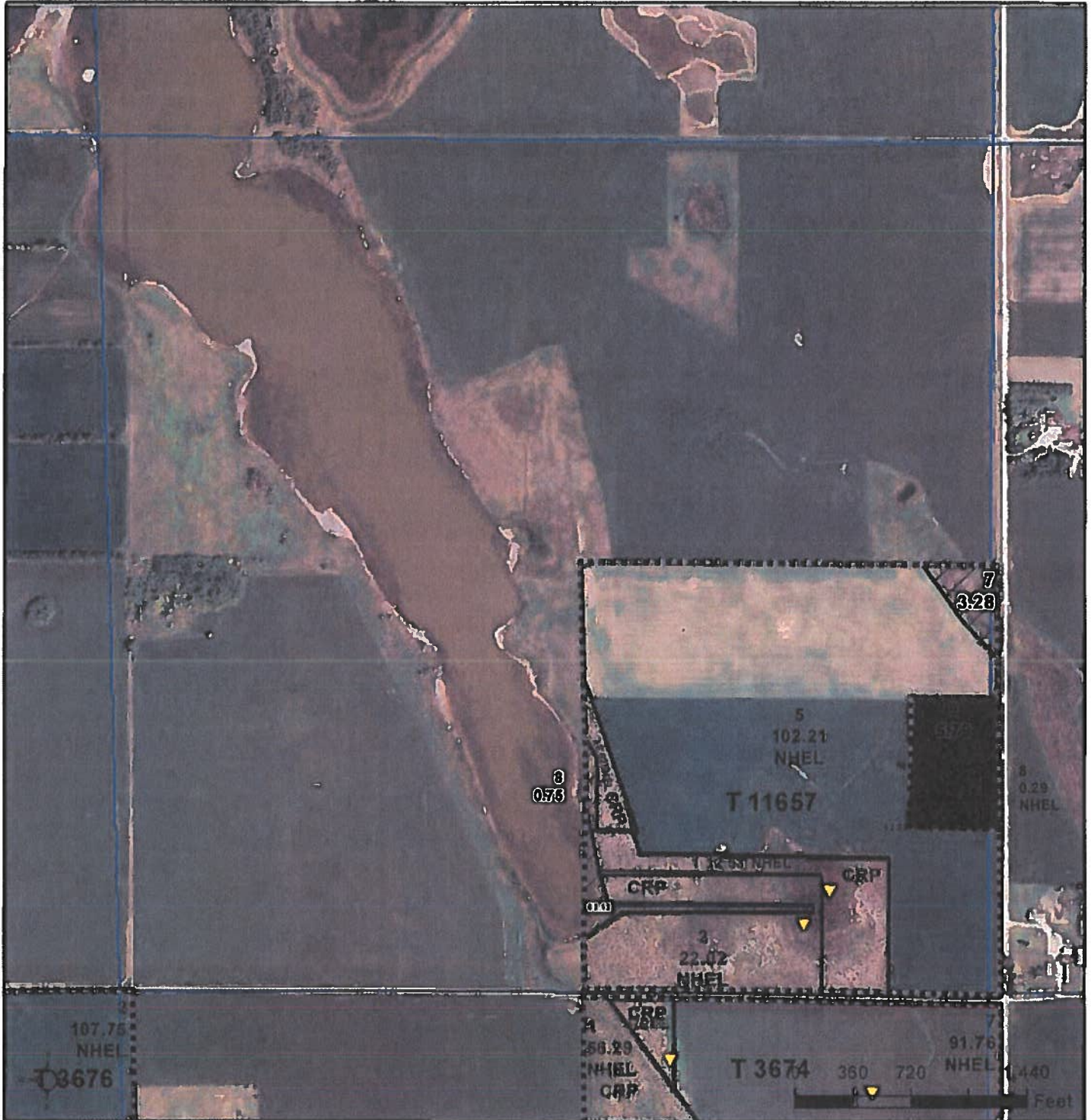
**TRACT 2**





United States  
Department of  
Agriculture

## Roberts County, South Dakota



**Common Land Unit**

	CRP
	Non-Cropland
	Cropland
	Tract Boundary
	PLSS

### Wetland Determination Identifiers

- Restricted Use
- Limited Restrictions
- Exempt from Conservation Compliance Provisions

United States Department of Agriculture (USDA) Farm Service Agency (FSA) maps are for FSA Program administration only. This map does not represent a legal survey or reflect actual ownership, rather it depicts the information provided directly from the producer and/or National Agricultural Imagery Program (NAIP) imagery. The producer accepts the data 'as is' and assumes all risks associated with its use. USDA-FSA assumes no responsibility for actual or consequential damage incurred as a result of any user's reliance on this data outside FSA Programs. Wetland identifiers do not represent the boundaries and determinations or contact USDA.

2018 Program Year

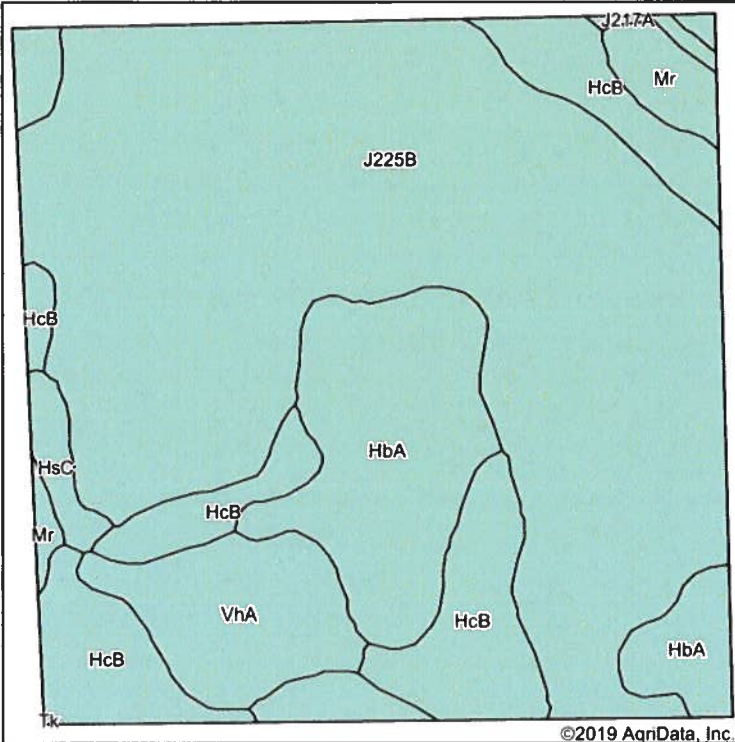
Map Created May 03, 2018

Farm 9396

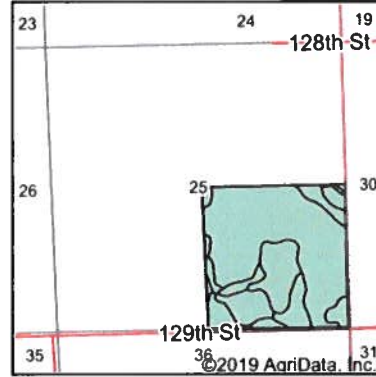
25-124N-50W

# TRACT 2

## Soils Map



Soils data provided by USDA and NRCS.



State: **South Dakota**  
 County: **Roberts**  
 Location: **25-124N-50W**  
 Township: **Becker**

Maps Provided By: **surety**  
 CUSTOMIZED ONLINE MAPPING  
 © AgriData, Inc. 2019 www.AgriDataInc.com



Area Symbol: SD109, Soil Area Version: 19

Code	Soil Description	Acres	Percent of field	Non-Irr Class *c	Productivity Index	Corn	Soybeans	*n NCCPI Soybeans
J225B	Forman-Aastad complex, 1 to 4 percent slopes	95.52	60.2%	Ile	88			68
HcB	Hamerly-Vallers loams, 2 to 4 percent slopes	25.29	15.9%	Ils	64	64	21	57
HbA	Hamerly-Tonka complex, 0 to 3 percent slopes	21.76	13.7%	Ils	69	70	23	42
VhA	Vallers-Hamerly loams, 0 to 2 percent slopes	10.33	6.5%	IVw	57	58	19	60
Mr	Southam silty clay loam, 0 to 1 percent slopes	3.42	2.2%	VIIIw	10			2
HsC	Esmond-Sisseton-Heimdal, complex, 2 to 12 percent slopes, moderately eroded	2.10	1.3%	IVe	58			43
J217A	Parnell silty clay loam, occasionally ponded, 0 to 1 percent slopes	0.18	0.1%	IIIw	71			60
Weighted Average					77.4	23.6	7.7	*n 60.4

\*n: The aggregation method is "Weighted Average using major components"

\*c: Using Capabilities Class Dominant Condition Aggregation Method

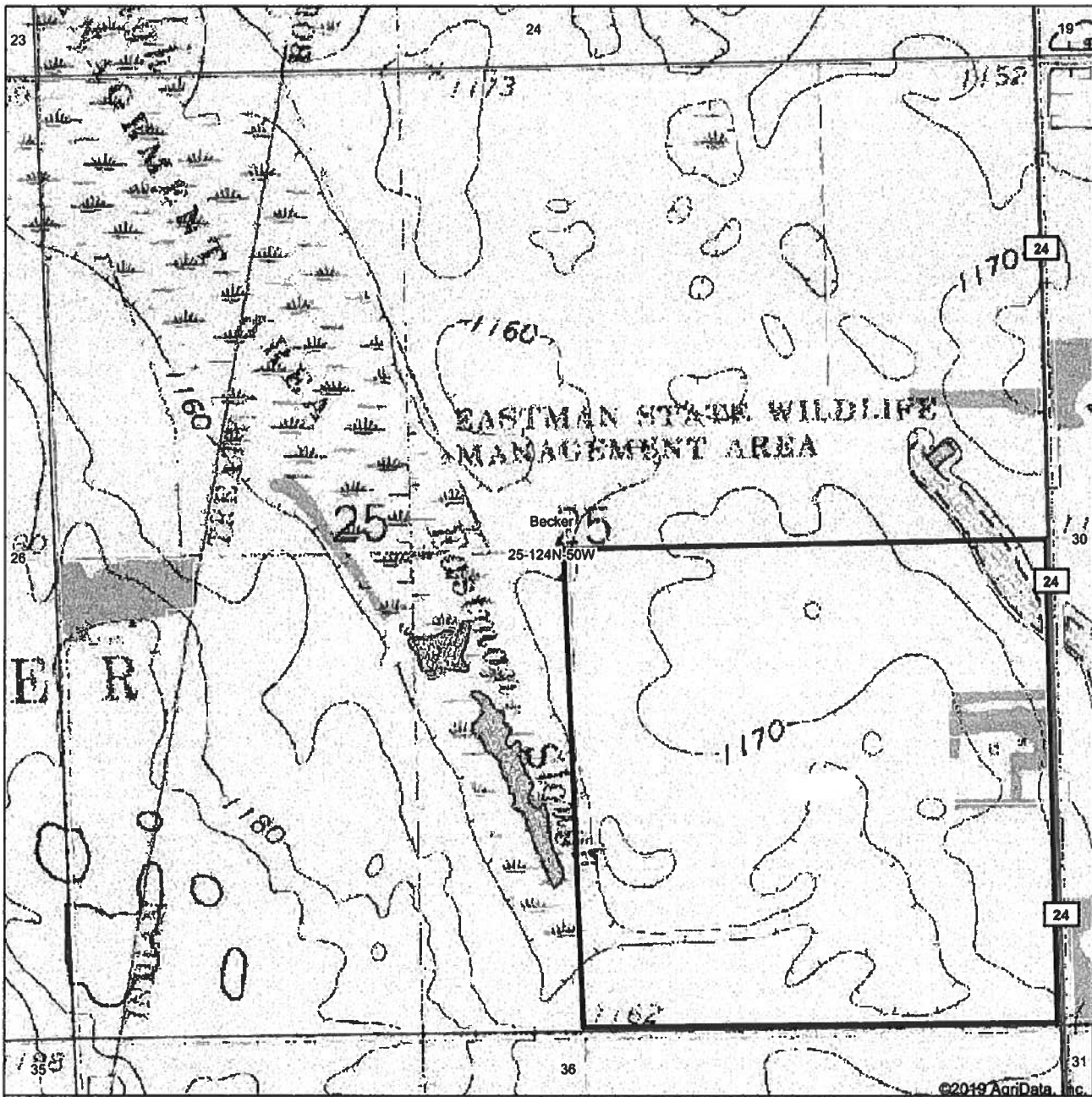
Soils data provided by USDA and NRCS.

# TRACT 2





## Topography Map



map center: 45° 31' 17.91, -96° 52' 20.62

0ft 856ft 1713ft

Maps Provided By:  
**surety**  
CUSTOMIZED ONLINE MAPPING  
© AgriData, Inc. 2019 [www.AgriDataInc.com](http://www.AgriDataInc.com)

**25-124N-50W**  
**Roberts County**  
**South Dakota**



1/21/2019

Field borders provided by Farm Service Agency as of 5/21/2008.

# TRACT 2

SE 1/4 25

RIGHT: North Crop From Southeast



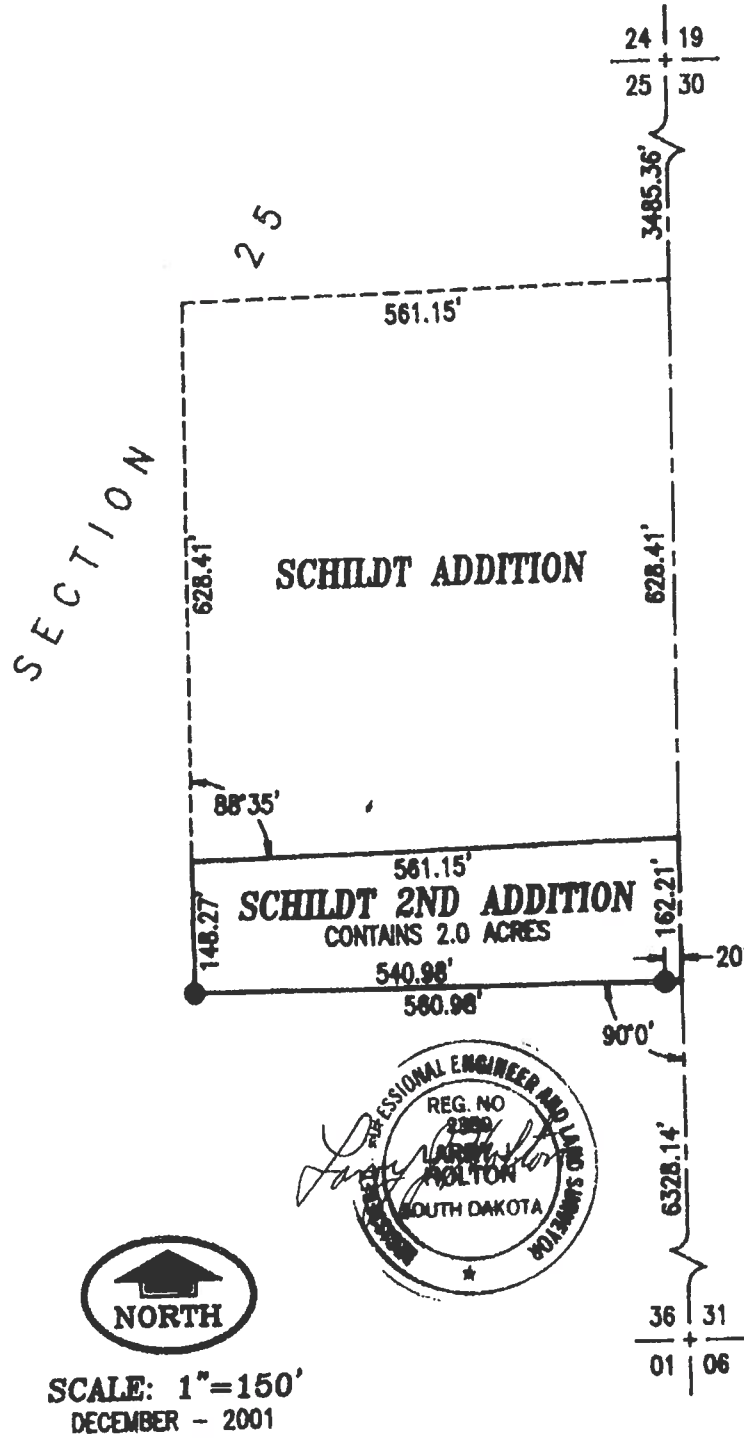
LEFT: Crop From Southeast Corner

RIGHT: CRP From Southwest Corner



**TRACT 2**

Plat



TRACT 2