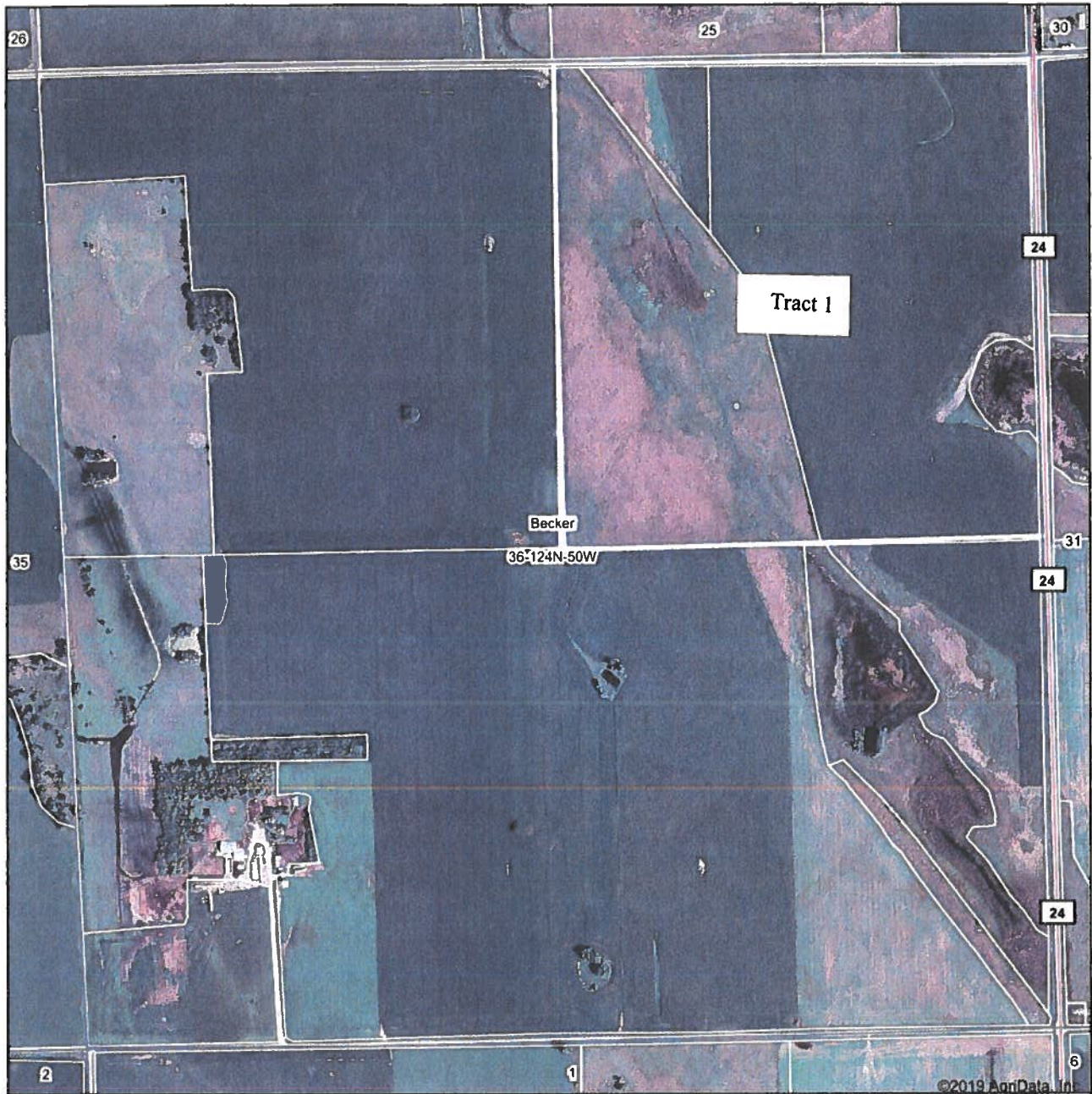


Aerial Map



map center: 45° 30' 25.81, -96° 52' 20.05

0ft 843ft 1686ft

Maps Provided By



© AgriData, Inc. 2019 www.AgrDataInc.com

36-124N-50W
Roberts County
South Dakota



1/21/2019

Field borders provided by Farm Service Agency as of 5/21/2008

TRACT 1

South Dakota
Roberts
Report ID: FSA-156EZ

U.S. Department of Agriculture
Farm Service Agency
Abbreviated 156 Farm Record

FARM: 9396
Prepared: 1/28/19 11:57 AM
Crop Year: 2019
Page: 1 of 7

DISCLAIMER: This is data extracted from the web farm database. Because of potential messaging failures in MIDAS, this data is not guaranteed to be an accurate and complete representation of data contained in the MIDAS system, which is the system of record for Farm Records.

Crop	ARC/PLC			
	ARC-IC NONE	ARC-CO WHEAT, CORN, SOYBN	PLC NONE	PLC-Default NONE
	Base Acreage	CTAP Tran Yield	PLC Yield	CCC-505 CRP Reduction
WHEAT	101.3		47	0.0
CORN	517.27		127	0.0
SOYBEANS	577.43		36	0.0
Total Base Acres:	1196.0			

Tract Number: 3674 Description: 18 NE 36 124 50

BIA Range Unit Number:

HEL Status: NHEL: no agricultural commodity planted on undetermined fields

Wetland Status: Tract contains a wetland or farmed wetland

WL Violations: None

Farmland	Cropland	DCP Cropland	WBP	WRP/EWP	CRP Cropland	GRP
154.24	150.67	150.67	0.0	0.0	58.91	0.0
State Conservation	Other Conservation	Effective DCP Cropland	Double Cropped	MPL/FWP	Native Sod	
0.0	0.0	91.76	0.0	0.0	0.0	

Crop	Base Acreage	CTAP Tran Yield	PLC Yield	CCC-505 CRP Reduction
WHEAT	6.76		47	0.0
CORN	34.5		127	0.0
SOYBEANS	38.51		36	0.0
Total Base Acres:	79.77			

Owners: SCHILDT FAM TR

TRACT 1



United States
Department of
Agriculture

Roberts County, South Dakota



Common Land Unit

Non-Cropland
Cropland

CRP

Tract Boundary
PLSS

Wetland Determination Identifiers

- Restricted Use
- Limited Restrictions
- Exempt from Conservation
- Compliance Provisions

2018 Program Year

Map Created May 03, 2018

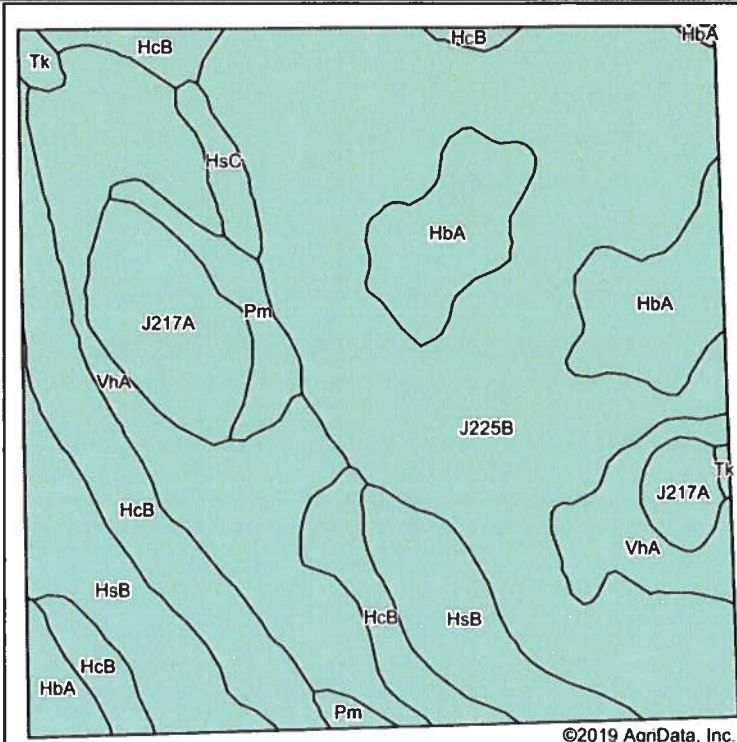
Farm 9396

36-124N-50W

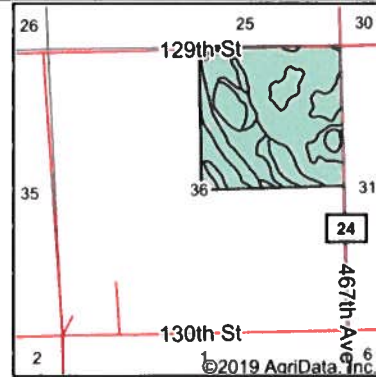
United States Department of Agriculture (USDA) Farm Service Agency (FSA) maps are for FSA Program administration only. This map does not represent a legal survey or reflect actual ownership, rather it depicts the information provided directly from the producer and/or National Agricultural Imagery Program (NAIP) imagery. The producer accepts the data 'as is' and assumes all risks associated with its use. USDA-FSA assumes no responsibility for actual or consequential damage incurred as a result of any user's reliance on this data outside FSA Programs. Wetland Identifiers do not represent boundaries and determinations or contact

TRACT 1

Soils Map



Soils data provided by USDA and NRCS.



State: **South Dakota**
 County: **Roberts**
 Location: **36-124N-50W**
 Township: **Becker**

Maps Provided By: **surety**
 CUSTOMIZED ONLINE MAPPING
 © AgriData, Inc. 2019 www.AgriDataInc.com



Area Symbol: SD109, Soil Area Version: 19

Code	Soil Description	Acres	Percent of field	Non-Irr Class *c	Productivity Index	Corn	Soybeans	*n NCCPI Soybeans
J225B	Forman-Aastad complex, 1 to 4 percent slopes	62.29	39.6%	Ile	88			68
VhA	Vallers-Hamery loams, 0 to 2 percent slopes	25.98	16.5%	IVw	57	58	19	60
HcB	Hamery-Vallers loams, 2 to 4 percent slopes	19.90	12.7%	Ils	64	64	21	57
HsB	Esmond-Heimdal-Sisseton complex, 2 to 6 percent slopes	16.16	10.3%	IIle	81			52
HbA	Hamery-Tonka complex, 0 to 3 percent slopes	15.29	9.7%	Ils	69	70	23	42
J217A	Parnell silty clay loam, occasionally ponded, 0 to 1 percent slopes	10.57	6.7%	IIIw	71			60
Pm	Playmoor silty clay loam	4.16	2.6%	IVw	35	29	8	20
HsC	Esmond-Sisseton-Heimdal, complex, 2 to 12 percent slopes, moderately eroded	1.89	1.2%	IVe	58			43
Tk	Tonka silty clay loam, 0 to 1 percent slopes	0.87	0.6%	IVw	58			15
Weighted Average					74.2	25.3	8.3	*n 58.7

*n: The aggregation method is "Weighted Average using major components"

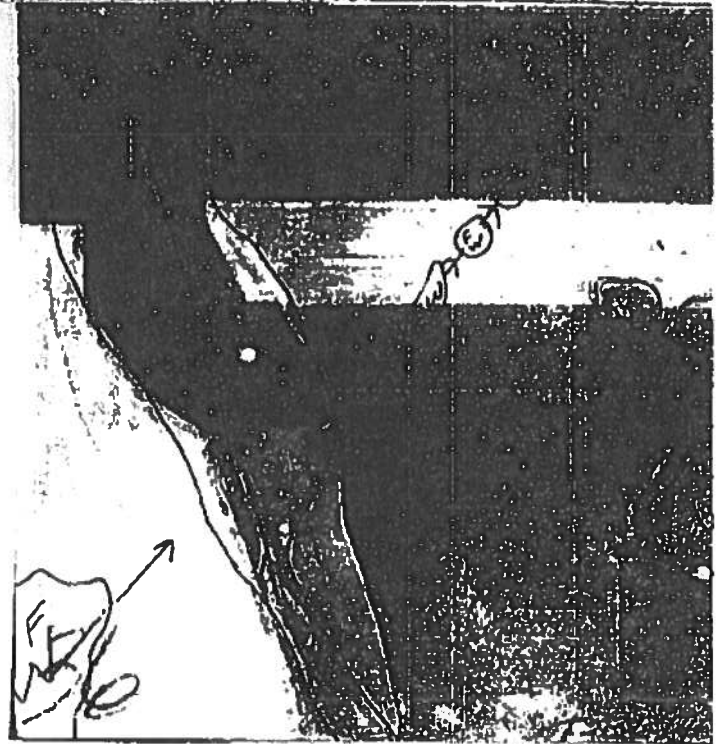
*c: Using Capabilities Class Dominant Condition Aggregation Method

Soils data provided by USDA and NRCS.

TRACT 1

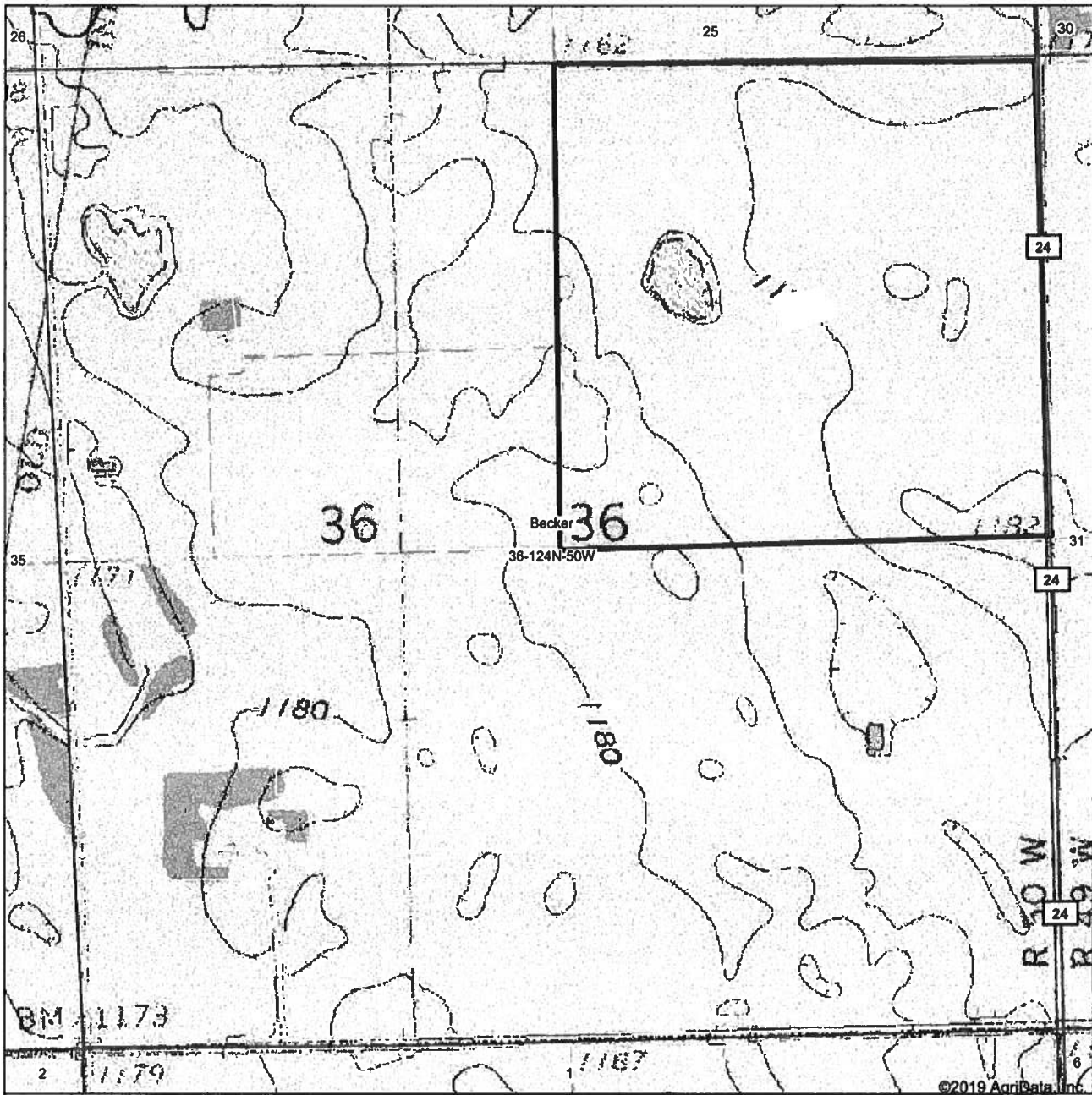
NOT TO SCALE

34-17-34501



TRACT 1

Topography Map



map center: 45° 30' 25.81, -96° 52' 20.05

0ft 843ft 1686ft

Maps Provided By:
surety
CUSTOMIZED ONLINE MAPPING
© AgriData, Inc. 2019 www.AgriDataInc.com

36-124N-50W
Roberts County
South Dakota



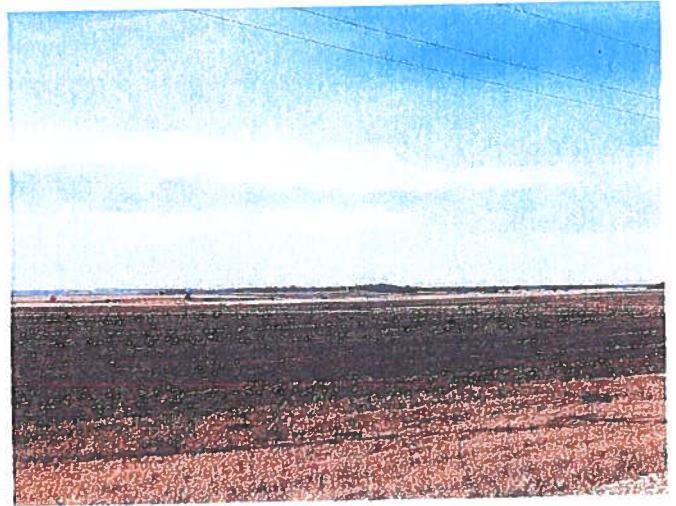
1/21/2019

Field borders provided by Farm Service Agency as of 5/21/2008.

TRACT 1

NE 1/4 36

RIGHT: Crop From Southeast Corner



LEFT: Crop From Northeast Corner



RIGHT: CRP From Northwest Corner



TRACT 1